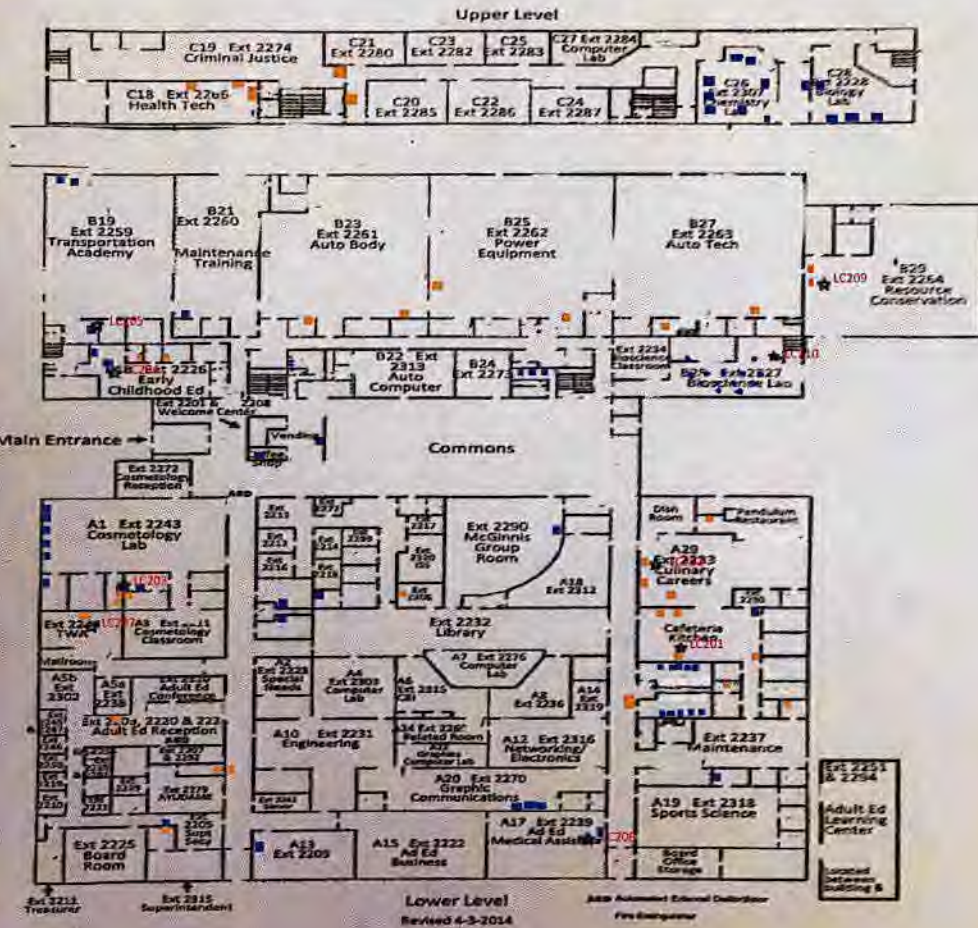
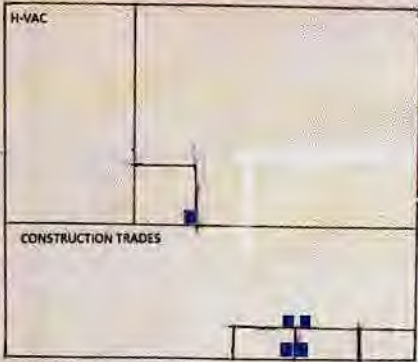


RE: Ashland Co West Holmes Career Center
Report
Drinking Water Program
Ashland County
PWS ID: OH334612



- PRE 1998 FIXTURES ■
- POST 1998 FIXTURES ■
- lead & copper sample site ★



All soldered copper lines are pre 1998 and may contain greater than 8% lead. Fixtures that have been replaced with low lead are indicated with a blue square.

RECEIVED
MAR 02 2017
DDAGW - NWDO