

RE: Lutz Elementary School
Report
Drinking Water Program
Sandusky County
PWS ID: OH7237112



GEORGE OLSON, A.I.A.
REGISTERED ARCHITECT
FREMONT, OHIO

RECEIVED

MAR 06 2017

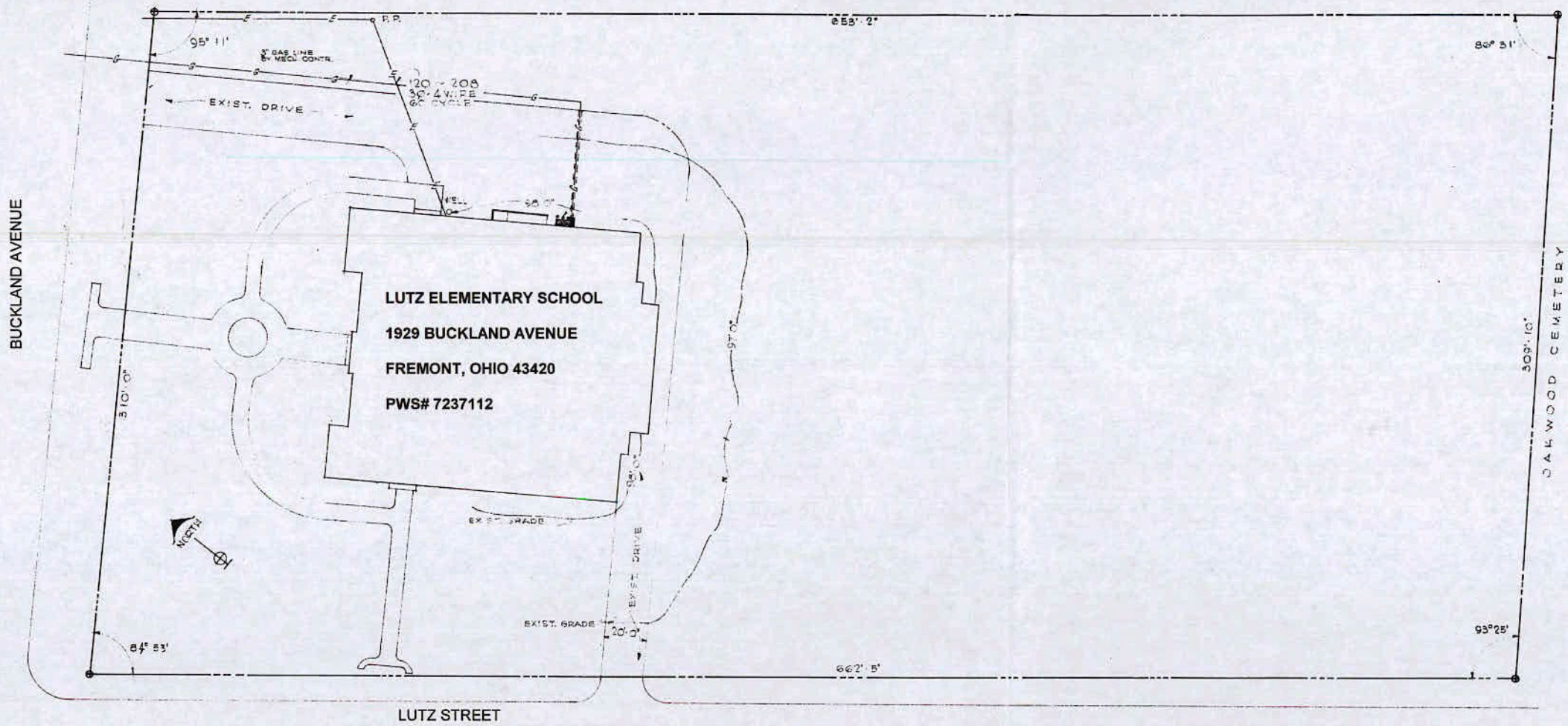
OHIO E.P.A.
N.W.D.O.

ALTERATIONS & ADDITIONS
TO THE
LUTZ ELEMENTARY SCHOOL BUILDING
FOR
THE BOARD OF EDUCATION
OF THE
FREMONT CITY SCHOOL DISTRICT
FREMONT, OHIO

COMMISSION NO. 6021
APRIL 1961

PLOT PLAN

A1



LUTZ SCHOOL WATER LINE MAP

- INDEX:
- A1 - PLOT PLAN
 - A2 - BASEMENT
 - A3 - FIRST FLOOR
 - A4 - SECOND FLOOR

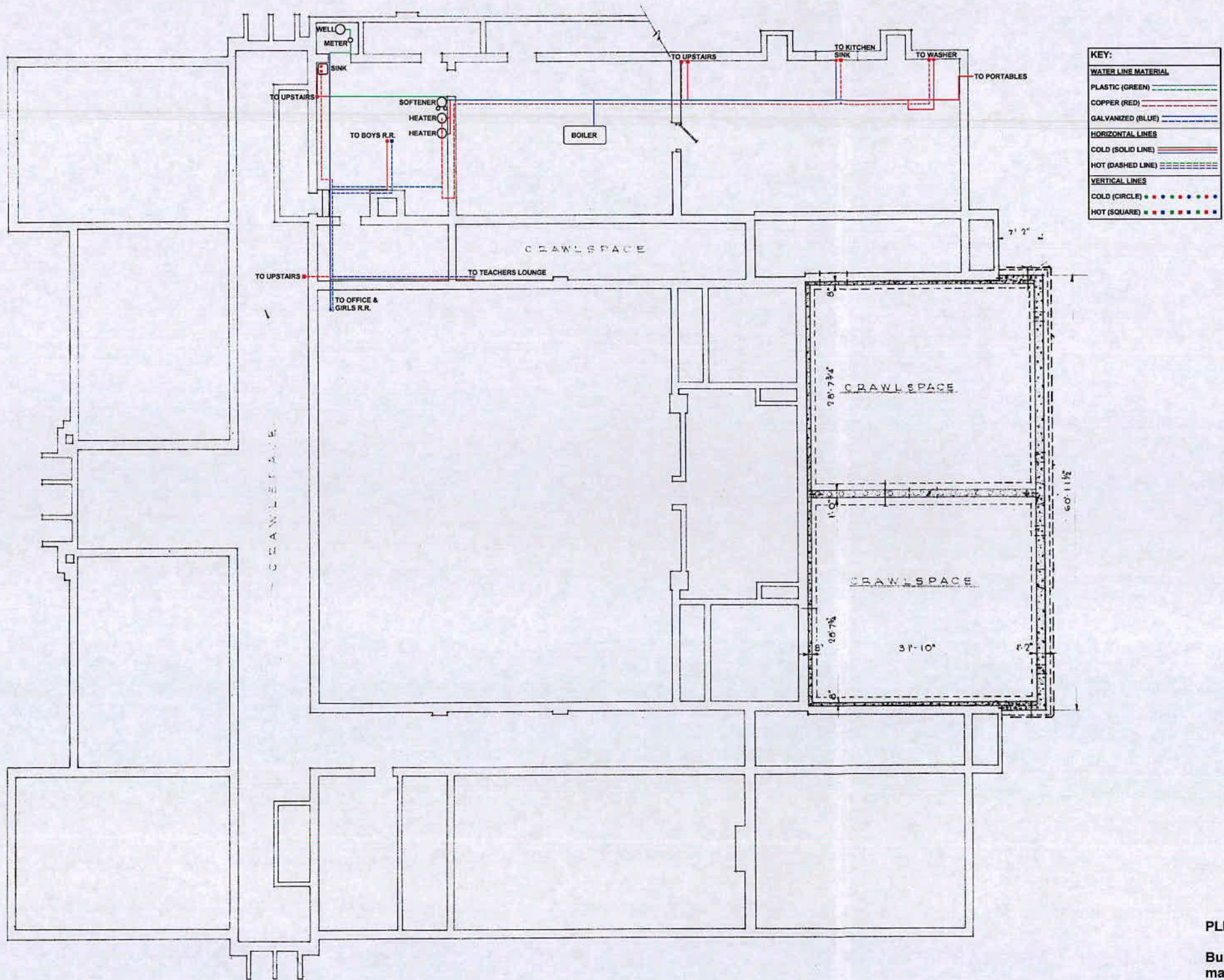
PLEASE NOTE:

Buildings built prior to 1998 or that use plumbing material or solder manufactured before 1998 may have materials with greater than 8% lead and are at a higher risk of contributing lead to the drinking water than materials manufactured after 1998. In addition, buildings built and plumbing materials manufactured after 2014 were required to have less than 0.25% lead by weight and have the lowest risk for contributing lead to the drinking water. It should be noted however that, although prohibited, some use of leaded solder or leaded components may have occurred after the prohibitions became effective.

RECEIVED

MAR 06 2017

OHIO E.P.A.
N.W.D.O.



FOUNDATION PLAN

SCALE 1/8" = 1'-0"

PLEASE NOTE:

Buildings built prior to 1998 or that use plumbing material or solder manufactured before 1998 may have materials with greater than 8% lead and are at a higher risk of contributing lead to the drinking water than materials manufactured after 1998. In addition, buildings built and plumbing materials manufactured after 2014 were required to have less than 0.25% lead by weight and have the lowest risk for contributing lead to the drinking water. It should be noted however that, although prohibited, some use of leaded solder or leaded components may have occurred after the prohibitions became effective.



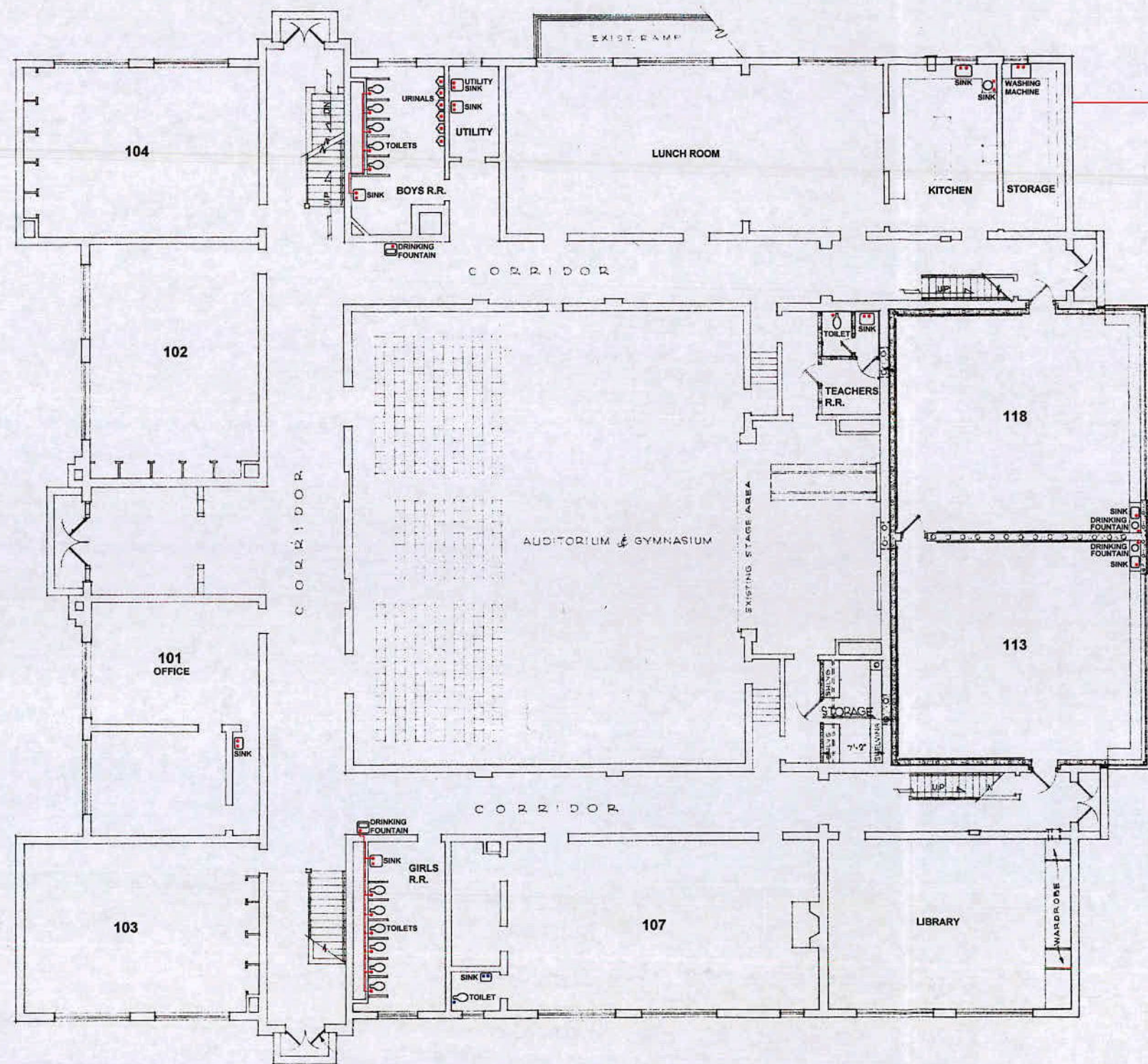
GEORGE OLSON, A.I.A.
REGISTERED ARCHITECT
FREMONT, OHIO

ALTERATIONS & ADDITIONS
TO THE
LUTZ ELEMENTARY SCHOOL BUILDING
FOR
THE BOARD OF EDUCATION
OF THE
FREMONT CITY SCHOOL DISTRICT
FREMONT, OHIO

FOUNDATION PLAN
FOUNDATION DETAILS

COMMISSION NO. 6021
APRIL 1961

A2

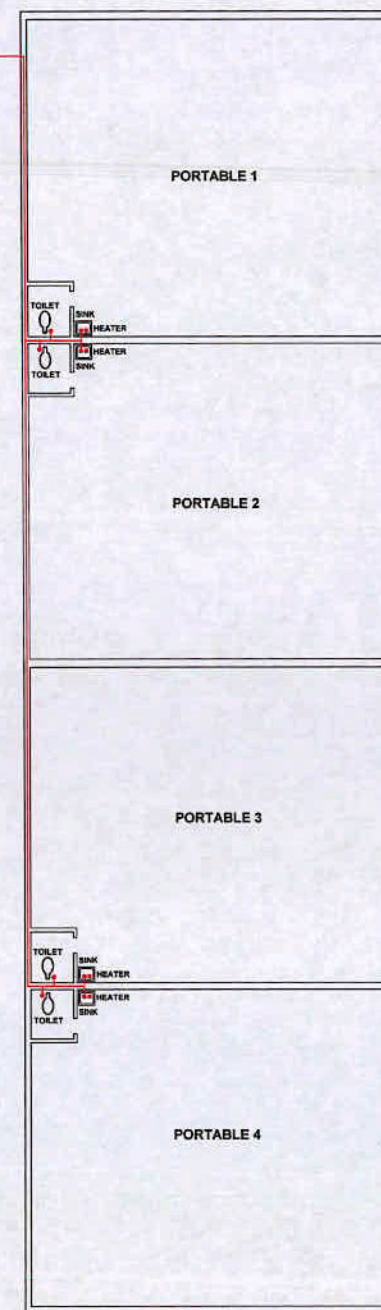


FIRST FLOOR PLAN
SCALE 1/8" = 1'-0"



KEY:

WATER LINE MATERIAL	
PLASTIC (GREEN)	---
COPPER (RED)	---
GALVANIZED (BLUE)	---
HORIZONTAL LINES	
COLD (SOLID LINE)	---
HOT (DASHED LINE)	---
VERTICAL LINES	
COLD (CIRCLE)	●
HOT (SQUARE)	■



PLEASE NOTE:

Buildings built prior to 1998 or that use plumbing material or solder manufactured before 1998 may have materials with greater than 8% lead and are at a higher risk of contributing lead to the drinking water than materials manufactured after 1998. In addition, buildings built and plumbing materials manufactured after 2014 were required to have less than 0.25% lead by weight and have the lowest risk for contributing lead to the drinking water. It should be noted however that, although prohibited, some use of leaded solder or leaded components may have occurred after the prohibitions became effective.

RECEIVED
MAR 06 2017
OHIO E.P.A.
N.W.D.O.

ALTERATIONS & ADDITIONS
TO THE
LUTZ ELEMENTARY SCHOOL BUILDING
FOR
THE BOARD OF EDUCATION
OF THE
FREMONT CITY SCHOOL DISTRICT
FREMONT, OHIO

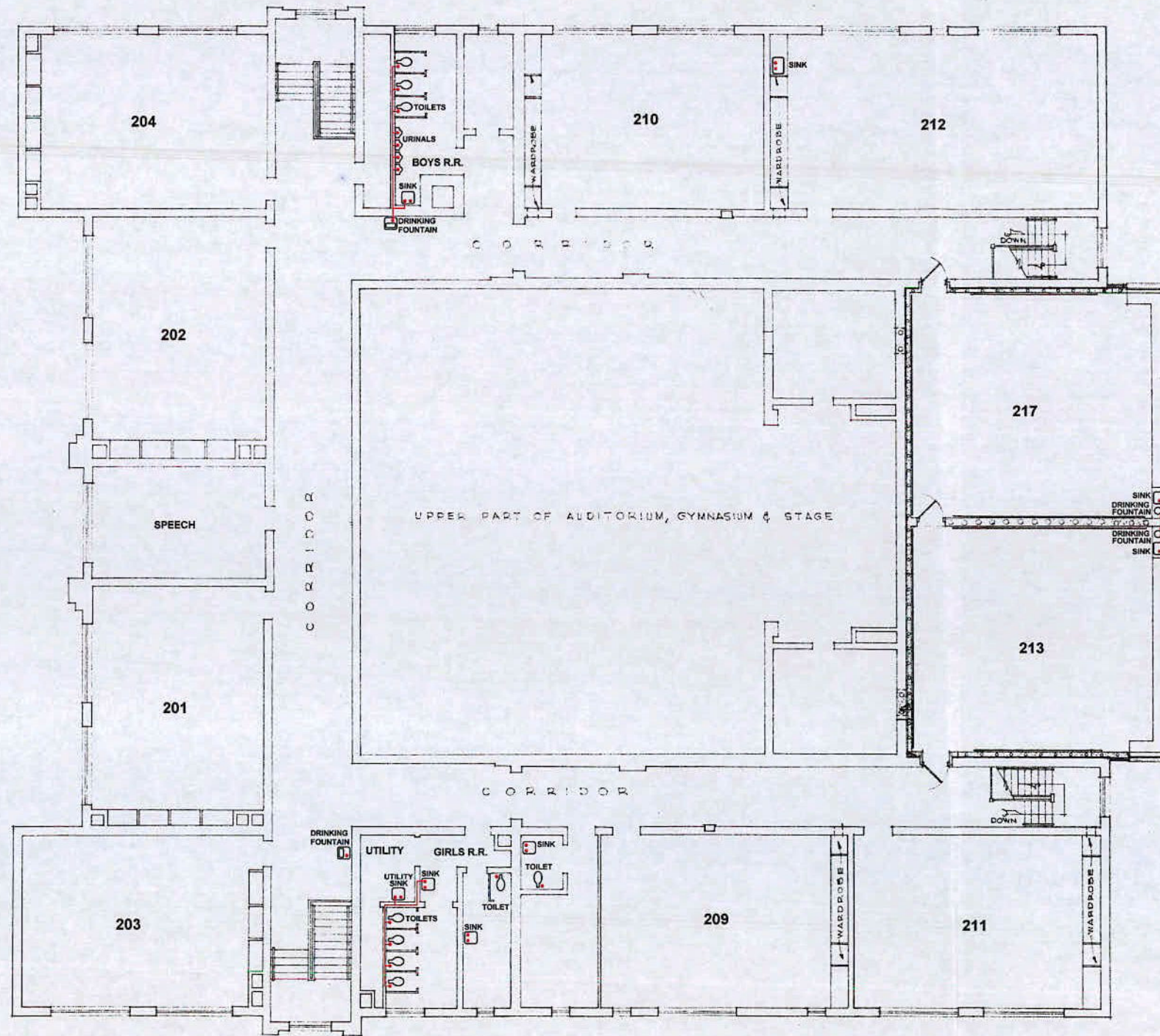
FIRST FLOOR PLAN
DETAILS

COMMISSION NO. 6021
APRIL 1961

A3



GEORGE OLSON, A.I.A.
REGISTERED ARCHITECT
FREMONT, OHIO



SECOND FLOOR PLAN
SCALE 1/8" = 1'-0"

KEY:	
WATER LINE MATERIAL	
PLASTIC (GREEN)	—
COPPER (RED)	—
GALVANIZED (BLUE)	—
HORIZONTAL LINES	
COLD (SOLID LINE)	—
HOT (DASHED LINE)	- - -
VERTICAL LINES	
COLD (CIRCLE)	●
HOT (SQUARE)	■

RECEIVED

MAR 06 2017

OHIO E.P.A.
N.W.D.O.

PLEASE NOTE:

Buildings built prior to 1998 or that use plumbing material or solder manufactured before 1998 may have materials with greater than 8% lead and are at a higher risk of contributing lead to the drinking water than materials manufactured after 1998. In addition, buildings built and plumbing materials manufactured after 2014 were required to have less than 0.25% lead by weight and have the lowest risk for contributing lead to the drinking water. It should be noted however that, although prohibited, some use of leaded solder or leaded components may have occurred after the prohibitions became effective.



GEORGE OLSON, A.I.A.
REGISTERED ARCHITECT
FREMONT, OHIO

ALTERATIONS & ADDITIONS
TO THE
LUTZ ELEMENTARY SCHOOL BUILDING
FOR
THE BOARD OF EDUCATION
OF THE
FREMONT CITY SCHOOL DISTRICT
FREMONT, OHIO

SECOND FLOOR PLAN
SECTIONS

COMMISSION NO. 6021
APRIL 1961

