

RE: Pioneer Hi Bred International
Report
Drinking Water Program
Wood County
PWS ID: OH8745412



Pioneer Hi-Bred International, Inc.
U.S. Region
Grand Rapids Production Plant
15180 Henry Wood County Road
Grand Rapids, OH 43522
(419) 748-8051 Tel
(419) 748-8900 Fax
(800) 548-2770 Wats

March 6, 2017

Ohio EPA Northwest District Office
Division of Drinking and Ground Water
347 N. Dunbridge Rd.
Bowling Green, OH 43402

RECEIVED

MAR 06 2017

DDAGW - NWDO

To whom it may concern,

The DuPont Pioneer plant Lead Plumbing and Fixtures map submission is enclosed. A list of sample locations is also included.

Additional information:

Map #1 – Is a map of the entire DuPont Pioneer Grand Rapids plant site with relevant references to water well location, buried water supply lines to plant and where Maps #2 through #6 locations originate from.

Map #2 – Front office restrooms and break room was installed in 2002. Water piping is copper lines with soldered connections throughout. Fixture count is: 11 sinks, 10 toilets, 1 shower

Map #3 – South mechanical room new water treatment system was installed in 2015 by Culligan Water Systems. New install is PVC piping with the exception of where the new PVC piping ties into existing copper piping to the water heater and the 3 existing copper water lines to the restrooms and breakroom.

Map #4 – North mechanical room was installed in 2002. Water piping is copper lines with soldered connections throughout.

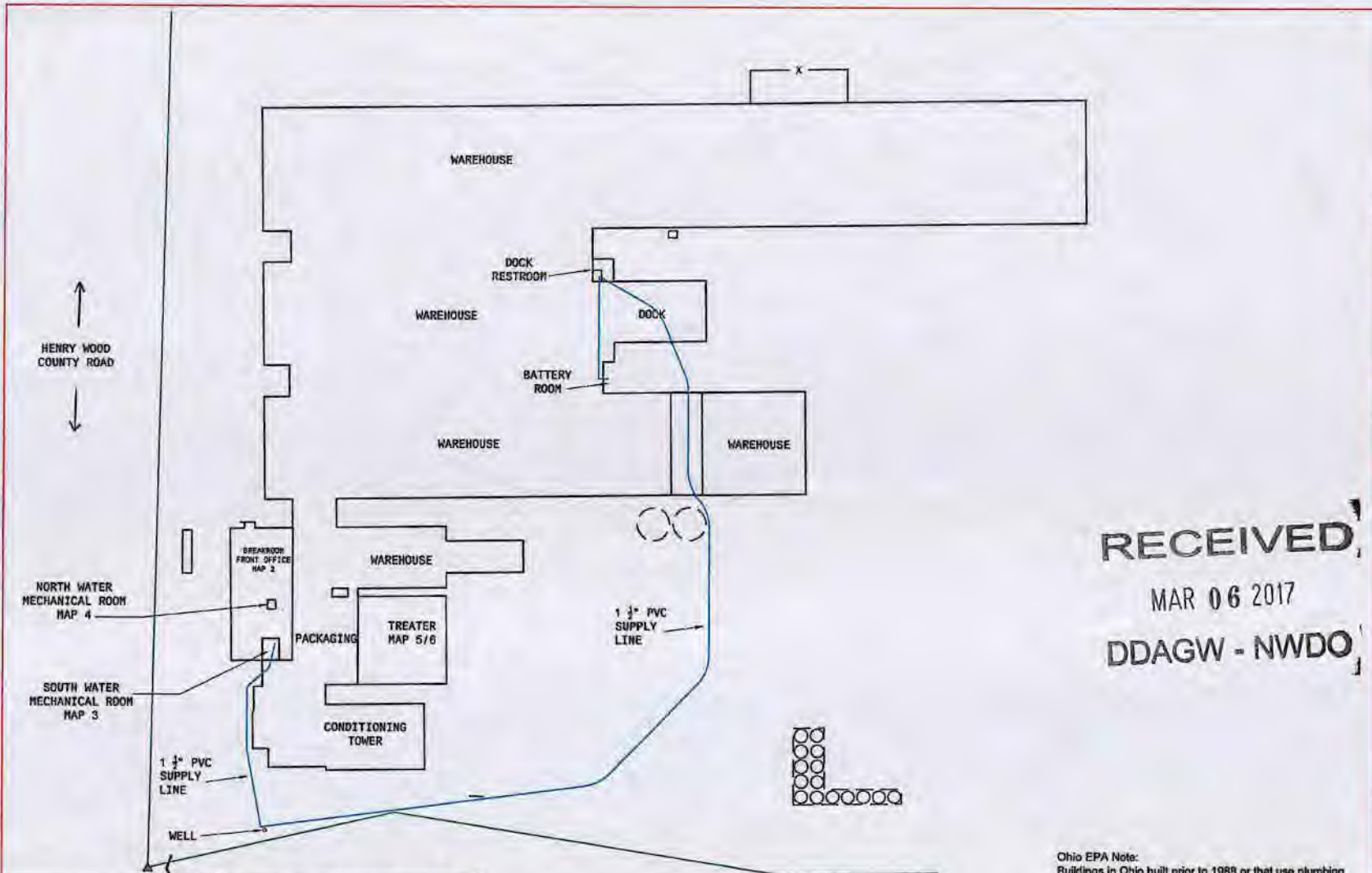
Map #5 – Soybean Treater process area cold water line map. Installation was in 2013. The Soybean Treater process area has copper lines with crimped fittings throughout (no solder) with exception of soldered connections on water heater and 2 sinks. Fixture count is: 2 sinks, 2 emergency showers

Map #6 – Soybean Treater process area hot water line map. Installation was in 2013. See note above (Map #5)

Please contact me with any questions.

Sincerely,

Dave Keber
Safety Supervisor
Pioneer Hi-Bred International
Grand Rapids Production Plant
15180 Henry Wood Road
Grand Rapids, OH 43522
800-548-2770 ext. 165
David.keber@pioneer.com



↑
HENRY WOOD
COUNTY ROAD
↓




RECEIVED
MAR 06 2017
DDAGW - NWDO



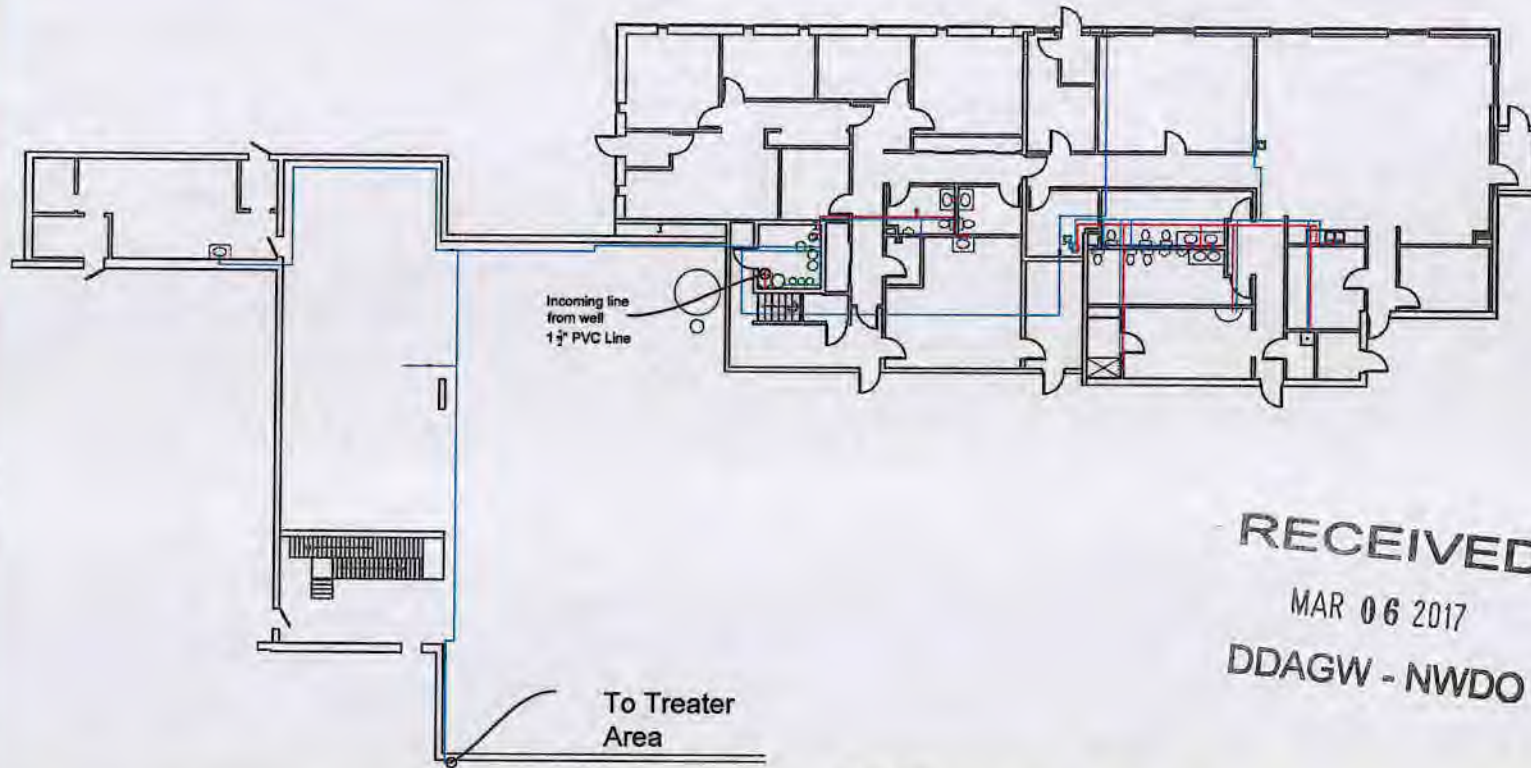
GRAND RAPIDS PLANT	
GRAND RAPIDS OVERVIEW	
DATE: 3/3/2017	DUPONT PIONEER 15188 HENRY WOOD RD GRAND RAPIDS, OH 43522 600-548-2778
DRAWN: JMN	
SCALE TO FIT	MAP 1



Ohio EPA Note:
Buildings in Ohio built prior to 1988 or that use plumbing material or solder manufactured before 1998 may have materials with greater than 8% lead and are at a higher risk of contributing lead to the drinking water than materials manufactured after 1998. In addition, buildings built and plumbing materials manufactured after 2014 were required to have less than 0.25% lead by weight and have the lowest risk for contributing lead to the drinking water. It should be noted however that, although prohibited, some use leaded solder or leaded components may have occurred after the prohibitions became effective.

Cold Line 
 Hot Line 
 Water Equipment 

Henry Wood County Road



RECEIVED
 MAR 06 2017
 DDAGW - NWDO



GRAND RAPIDS PLANT

MAIN OFFICE
 WATER LINE FLOOR PLAN

15180 Henry Wood County Road
 Grand Rapids, OH 43522

DATE: 2/20/2017

DRAWN: JMN

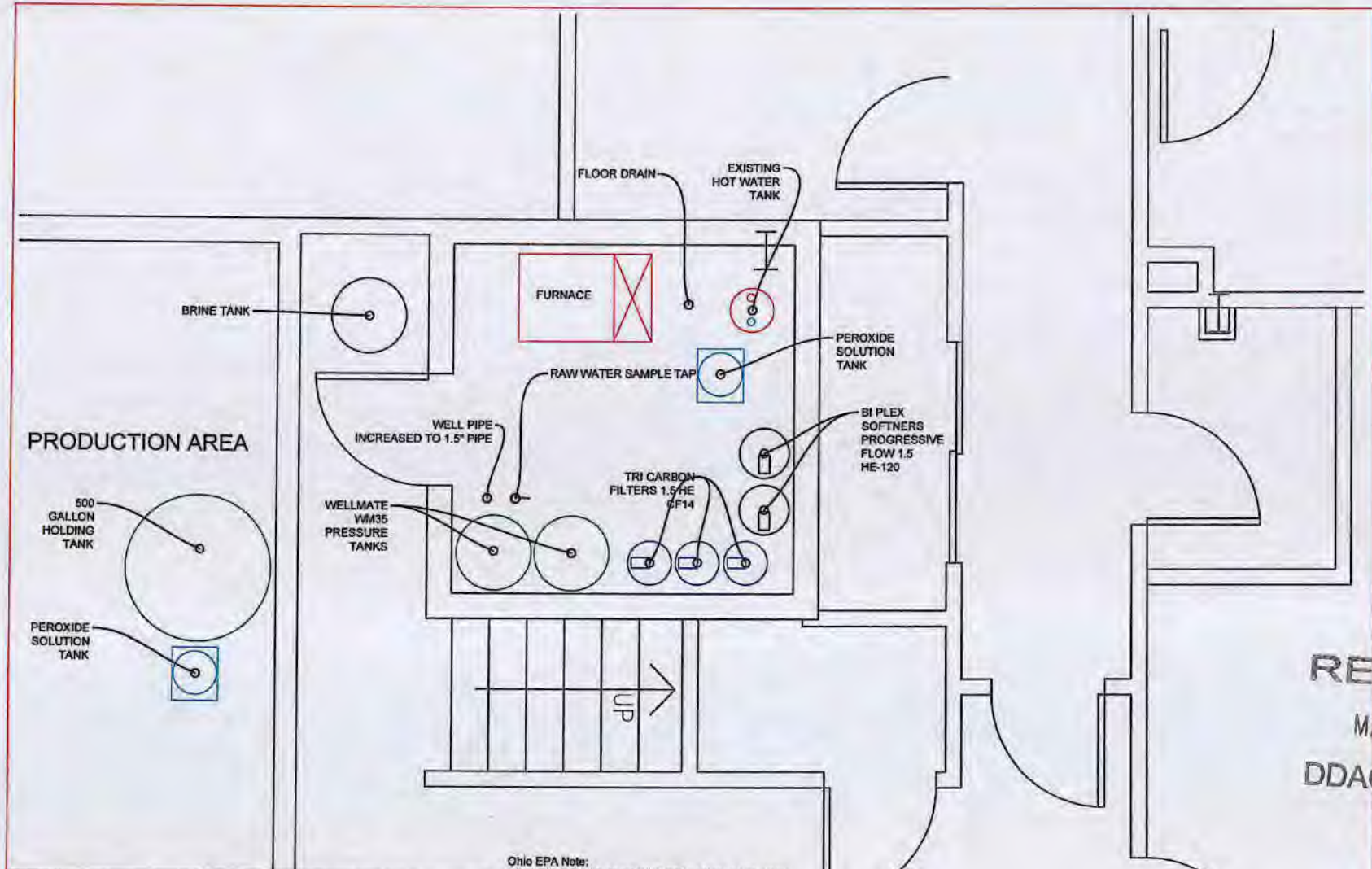
Scale: 1" = 16'

MAP 2

To Treater Area

Ohio EPA Note:
 Buildings in Ohio built prior to 1988 or that use plumbing material or solder manufactured before 1998 may have materials with greater than 8% lead and are at a higher risk of contributing lead to the drinking water than materials manufactured after 1988. In addition, buildings built and plumbing materials manufactured after 2014 were required to have less than 0.25% lead by weight and have the lowest risk for contributing lead to the drinking water. It should be noted however that, although prohibited, some use leaded solder or leaded components may have occurred after the prohibitions became effective.





RECEIVED
 MAR 06 2017
 DDAGW - NWDO

Ohio EPA Note:
 Buildings in Ohio built prior to 1988 or that use plumbing material or solder manufactured before 1998 may have materials with greater than 8% lead and are at a higher risk of contributing lead to the drinking water than materials manufactured after 1998. In addition, buildings built and plumbing materials manufactured after 2014 were required to have less than 0.25% lead by weight and have the lowest risk for contributing lead to the drinking water. It should be noted however that, although prohibited, some use leaded solder or leaded components may have occurred after the prohibitions became effective.



PIONEER

GRAND RAPIDS PLANT

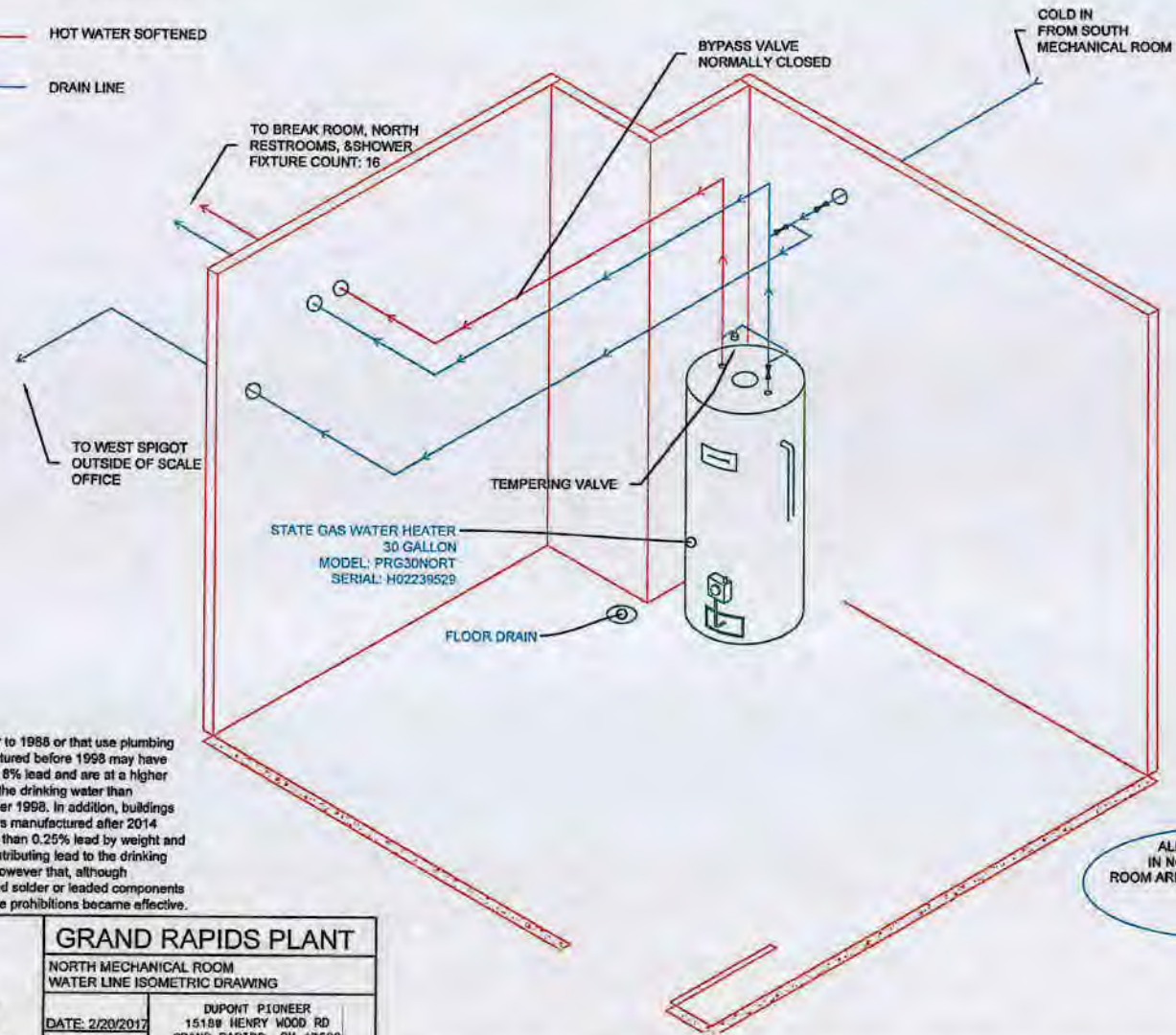
SOUTH MECHANICAL ROOM
 FLOOR PLAN

DATE: 3/3/17
 DRAWN: JMN
 DUPONT PIONEER
 15189 HENRY WOOD RD
 GRAND RAPIDS, OH 43522
 688-548-2778

SCALE: 1/4" = 1'
 MAP 3




— COLD WATER SOFTENED
 — HOT WATER SOFTENED
 — DRAIN LINE



Ohio EPA Note:
 Buildings in Ohio built prior to 1988 or that use plumbing material or solder manufactured before 1998 may have materials with greater than 8% lead and are at a higher risk of contributing lead to the drinking water than materials manufactured after 1998. In addition, buildings built and plumbing materials manufactured after 2014 were required to have less than 0.25% lead by weight and have the lowest risk for contributing lead to the drinking water. It should be noted however that, although prohibited, some use leaded solder or leaded components may have occurred after the prohibitions became effective.

RECEIVED
 MAR 06 2017
 DDAGW - NWDO

ALL WATER LINES
 IN NORTH MECHANICAL
 ROOM ARE 3/4" COPPER W/ INSUL.

 PIONEER	GRAND RAPIDS PLANT		
	NORTH MECHANICAL ROOM WATER LINE ISOMETRIC DRAWING		
	DATE: 2/20/2017	DUPOIN PIONEER 15188 HENRY WOOD RD GRAND RAPIDS, OH 43522 888-548-2778	
	DRAWN: JMN	Scale Bar - 1/4" = 1' MAP 4	

NOTE: WATER COMING IN TO NORTH MECHANICAL ROOM IS SOFT, AND IS ROUTED THROUGH ADDITIONAL SOFTENER

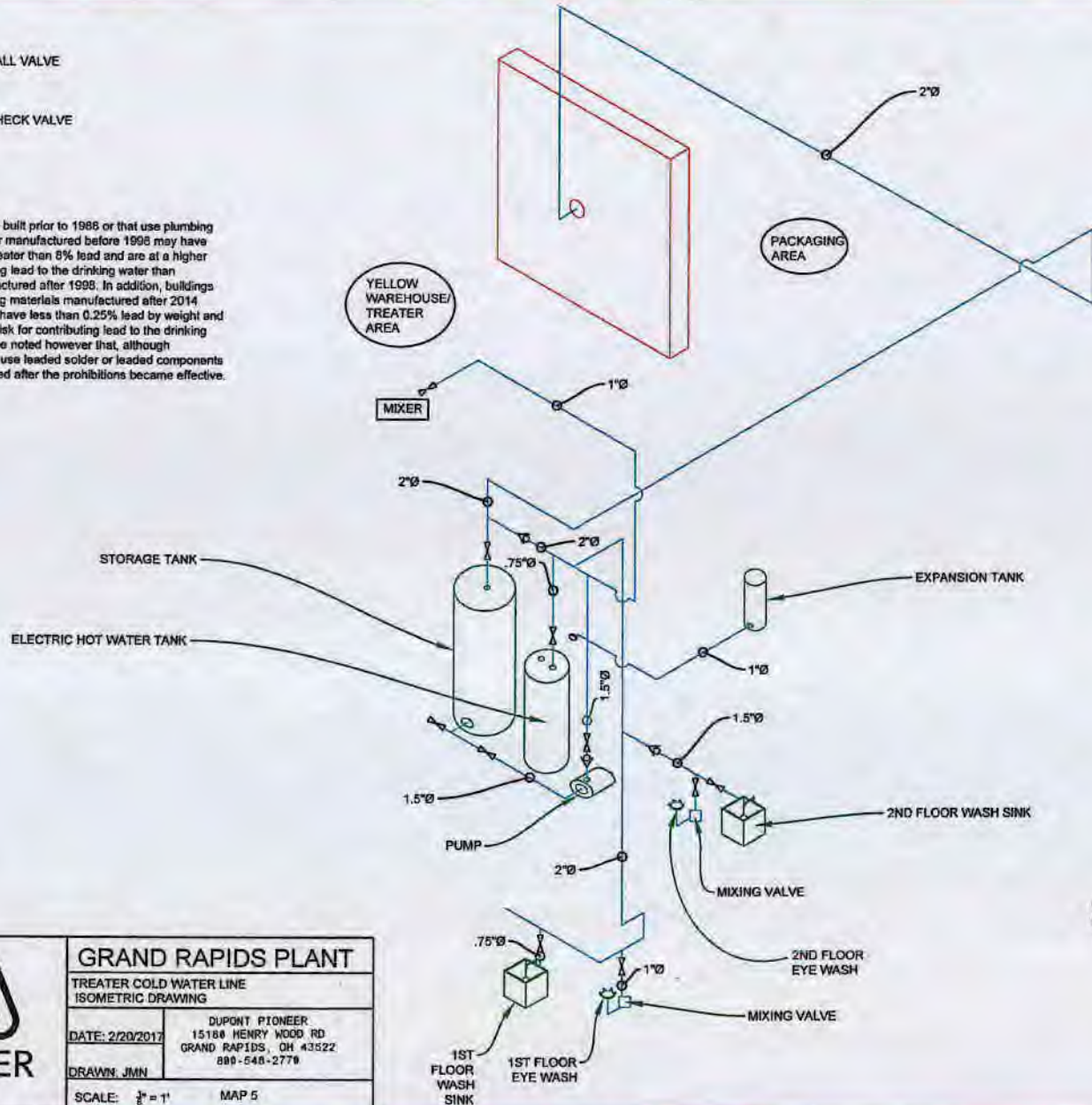


⊗ BALL VALVE

⊙ CHECK VALVE


Ohio EPA Note:

Buildings in Ohio built prior to 1986 or that use plumbing material or solder manufactured before 1996 may have materials with greater than 8% lead and are at a higher risk of contributing lead to the drinking water than materials manufactured after 1996. In addition, buildings built and plumbing materials manufactured after 2014 were required to have less than 0.25% lead by weight and have the lowest risk for contributing lead to the drinking water. It should be noted however that, although prohibited, some use leaded solder or leaded components may have occurred after the prohibitions became effective.



RECEIVED
MAR 06 2017
DDAGW - NWDO

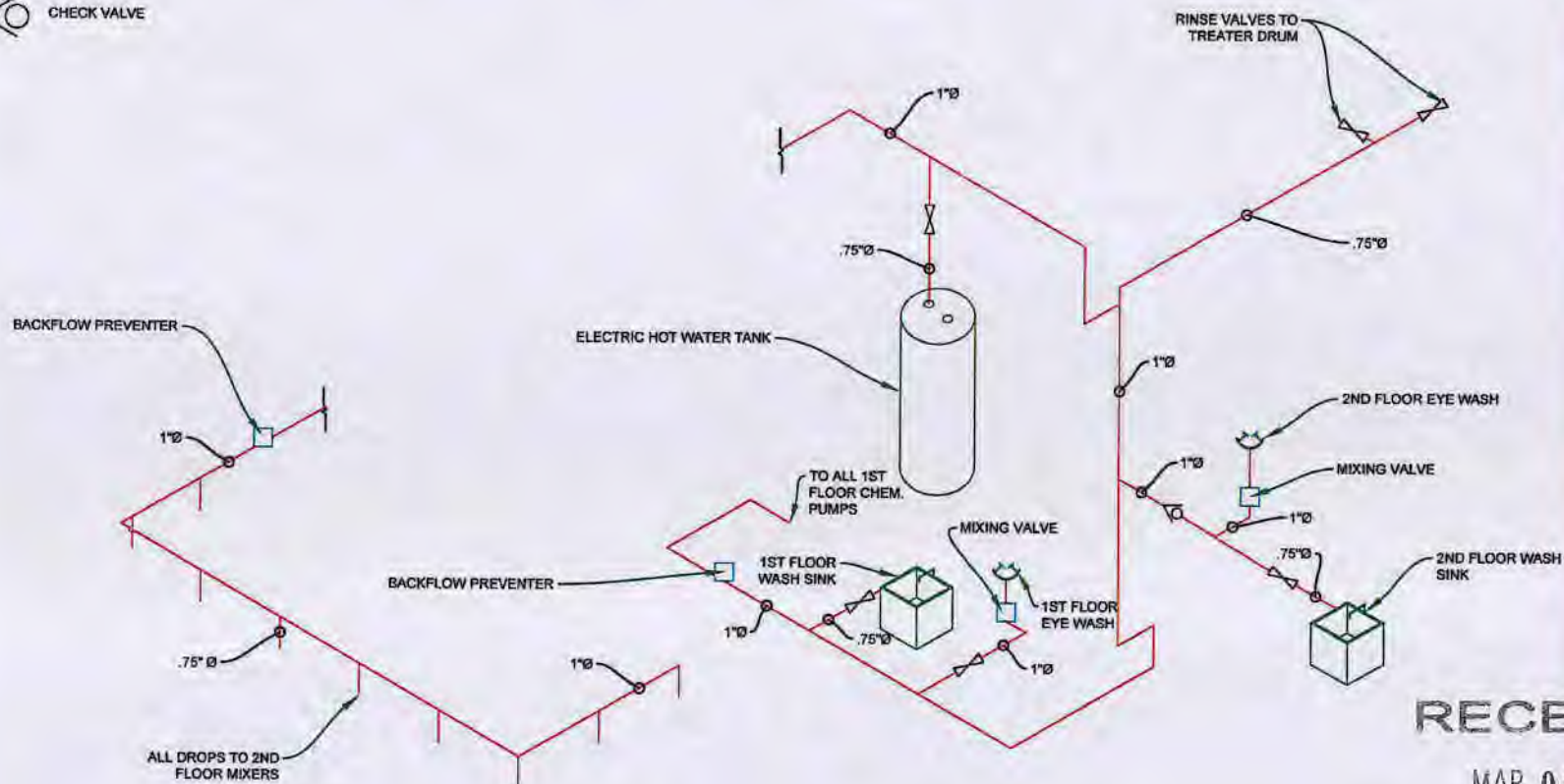
NOTE: ALL LINES DEPICTED
IN DRAWING ARE COPPER

 PIONEER	GRAND RAPIDS PLANT	
	TREATER COLD WATER LINE ISOMETRIC DRAWING	
	DATE: 2/20/2017	DUPONT PIONEER 15188 HENRY WOOD RD GRAND RAPIDS, OH 43522 800-548-2779
	DRAWN: JMN	SCALE: 3/8" = 1' MAP 5



BALL VALVE

CHECK VALVE



DUPONT PIONEER
 15100 HENRY HOOD RD
 GRAND RAPIDS, OH 43522
 800-548-2770



GRAND RAPIDS PLANT

TREATER HOT WATER LINES
 ISOMETRIC DRAWING

DATE: 2/20/2017

DRAWN: JMN

Scale: 1/8" = 1'

NOTE: ALL LINES DEPICTED
 IN DRAWING ARE COPPER.

MAP 8'

Ohio EPA Note:
 Buildings in Ohio built prior to 1988 or that use plumbing material or solder manufactured before 1998 may have materials with greater than 8% lead and are at a higher risk of contributing lead to the drinking water than materials manufactured after 1988. In addition, buildings built and plumbing materials manufactured after 2014 were required to have less than 0.25% lead by weight and have the lowest risk for contributing lead to the drinking water. It should be noted however that, although prohibited, some use leaded solder or leaded components may have occurred after the prohibitions became effective.

RECEIVED

MAR 06 2017

DDAGW - NWDO

