

RE: Grover Hill Elementary School  
Report  
Drinking Water Program  
Paulding County  
PWS ID: OH6330912

**VERIFICATION FORM FOR COMMUNITY PUBLIC WATER SYSTEMS  
CLAIMING NO LEAD SERVICE LINES**

The owner or operator of all community public water systems must identify and map areas of their distribution system that are known or are likely to contain lead service lines. Systems must submit a copy of the applicable map to the Ohio Department of Health and the Ohio Department of Job and Family Services. Systems must also submit a report to the director containing at least both of the following: (1) The applicable map with narrative, and (2) A list of sampling locations used to collect samples as required by Ohio Revised Code (ORC) Section 6109.121 and any rules adopted thereunder, including contact information for the owner and occupant of each sampling site.

Should a water system determine no lead service lines exist in their distribution system, they must provide information stating they reviewed, at the minimum, historical permit records and local ordinances, distribution maintenance records and information pertaining to installation dates or materials for all services lines. This information must be verified below.

I HEREBY CERTIFY THAT THE FOLLOWING METHOD(S) WERE USED TO DETERMINE NO LEAD SERVICE LINES EXIST IN THIS WATER SYSTEM'S DISTRIBUTION SYSTEM, AS REQUIRED BY ORC 6109.121(F):

LEAD SERVICE LINE VERIFICATION
<div align="right"> <p><b>RECEIVED</b> MAR 06 2017 OHIO E.P.A. N.W.D.O.</p> </div>
<p><b>This PWS states they have no lead service lines and has reviewed the following information (select one or more of the following):</b></p> <ul style="list-style-type: none"> <li><input type="checkbox"/> Historical permit records and/or local ordinances</li> <li><input type="checkbox"/> Distribution maintenance records (i.e. meter replacement, waterline break repairs)</li> <li><input type="checkbox"/> Information pertaining to installation dates for all service lines (i.e. after 1986 when lead services lines were banned)</li> <li><input checked="" type="checkbox"/> Service line material of all service lines is known (i.e. all service lines are known to be PVC)</li> </ul>

*Winston Gross*      *3-2-2017*  
 Signature of Responsible Person      Date

Winston Gross Operator w/charge  
 Printed Name and Title of Responsible Person

PWS NAME: Grover Hill Elem.  
 PWS ID: OH 6330912  
 COUNTY: PAULINA

Grover Hill  
6330912



**ROOM LEGEND - 'A1'**

ROOM NO.	ROOM NAME	AREA S.F.	COLUMN HEIGHT
A100	KINDERGARTEN	1188	VAR. HT.
A101	KINDERGARTEN	1188	VAR. HT.
A102	TOILET	68	VAR. HT.
A103	TOILET	68	VAR. HT.
A104	CORRIDOR	276	VAR. HT.
A105	VESTIBULE	48	VAR. HT.
A106	DINING/PLATFORM AREA	3466	EXPOSED
A107	TABLE STORAGE	181	EXPOSED
A108	GIRLS TOILET	195	VAR. HT.
A109	BOYS TOILET	203	VAR. HT.
A110	FREEZER	88	VAR. HT.
A111	COCHE	283	VAR. HT.
A112	KITCHEN	48	VAR. HT.
A113	STOVE	71	VAR. HT.
A114	OFFICE	62	VAR. HT.
A115	DRY FOOD STORAGE	62	VAR. HT.
A116	LOCKER	62	VAR. HT.
A117	TOILET	104	VAR. HT.
A118	CORRIDOR	104	VAR. HT.
A119	NOT USED	992	VAR. HT.
A120	COMPUTER LAB	992	VAR. HT.
A121	1st GRADE CLASSROOM	903	VAR. HT.
A122	1st GRADE CLASSROOM	903	VAR. HT.
A123	TECHNOLOGY ROOM	38	VAR. HT.
A124	CORRIDOR	62	VAR. HT.
A125	VESTIBULE	62	VAR. HT.
A126	KINDERGARTEN	48	VAR. HT.
A127	TOILET	48	VAR. HT.
A128	KINDERGARTEN	148	VAR. HT.
A129	CORRIDOR	148	VAR. HT.
A130	CORRIDOR	148	VAR. HT.
A131	CORRIDOR	148	VAR. HT.
A132	CORRIDOR	148	VAR. HT.
A133	CORRIDOR	148	VAR. HT.
A134	CORRIDOR	148	VAR. HT.
A135	CORRIDOR	148	VAR. HT.
A136	CORRIDOR	148	VAR. HT.
A137	CORRIDOR	148	VAR. HT.
A138	CORRIDOR	148	VAR. HT.
A139	CORRIDOR	148	VAR. HT.
A140	CORRIDOR	148	VAR. HT.
A141	CORRIDOR	148	VAR. HT.
A142	CORRIDOR	148	VAR. HT.
A143	CORRIDOR	148	VAR. HT.
A144	CORRIDOR	148	VAR. HT.
A145	CORRIDOR	148	VAR. HT.
A146	CORRIDOR	148	VAR. HT.
A147	CORRIDOR	148	VAR. HT.
A148	CORRIDOR	148	VAR. HT.
A149	CORRIDOR	148	VAR. HT.
A150	CORRIDOR	148	VAR. HT.
A151	CORRIDOR	148	VAR. HT.
A152	CORRIDOR	148	VAR. HT.
A153	CORRIDOR	148	VAR. HT.
A154	CORRIDOR	148	VAR. HT.
A155	CORRIDOR	148	VAR. HT.
A156	CORRIDOR	148	VAR. HT.
A157	CORRIDOR	148	VAR. HT.
A158	CORRIDOR	148	VAR. HT.
A159	CORRIDOR	148	VAR. HT.
A160	MEDIA/ARCADE DECK	842	EXPOSED

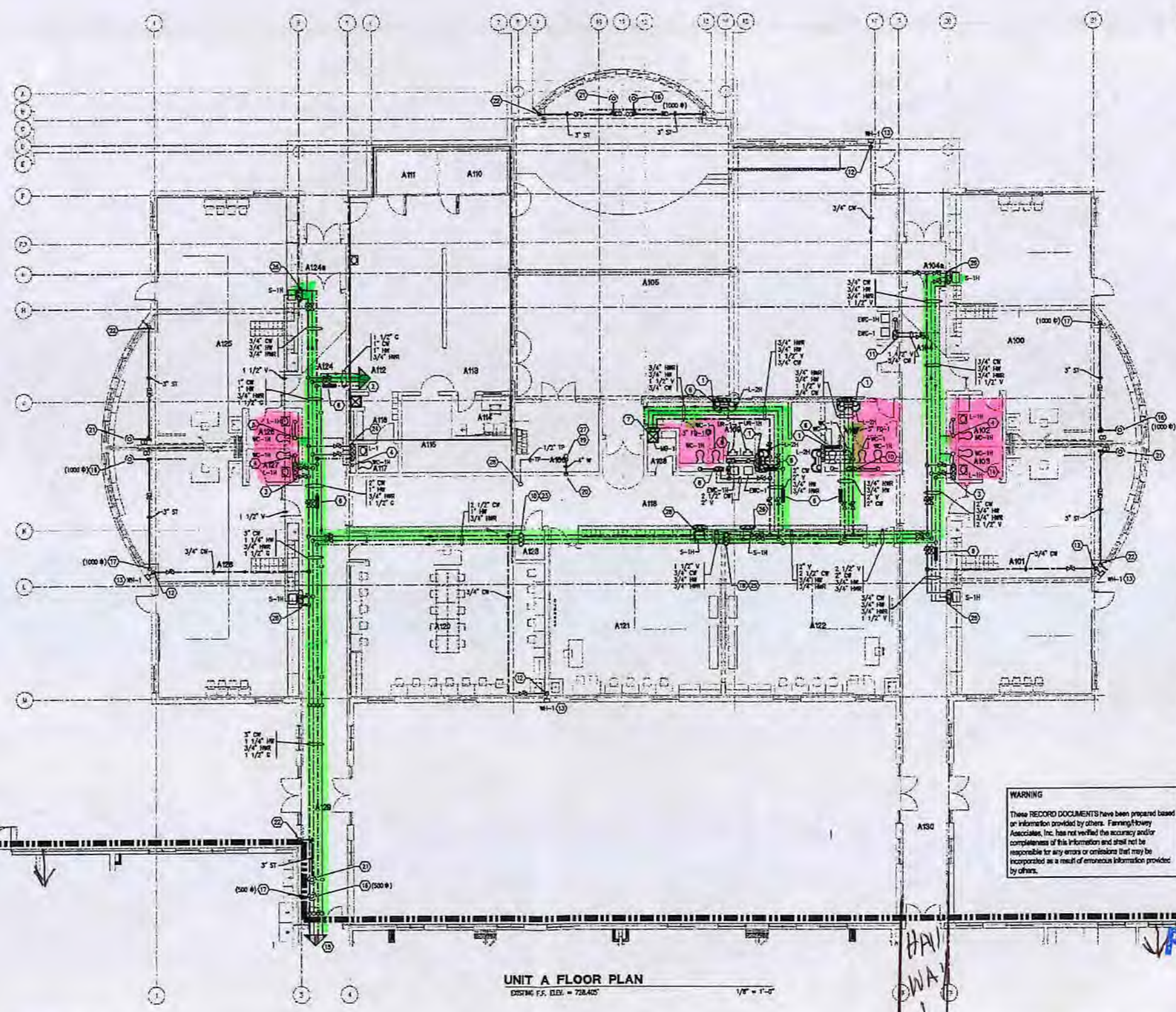
Restrooms  
sinks  
Drink Fountains

Water lines.

Lead + Copper  
Sample Sites  
(5)

← W

ALL  
Sch. 80



- GENERAL NOTE**
1. REFER TO GENERAL PLUMBING NOTES ON DRAWING PLS WHICH APPLY TO THIS DRAWING.
- PLAN NOTES:**
1. 3/4" HOT AND COLD WATER DOWN, 2" WASTE DOWN, 1 1/2" VENT UP, 3/4" HOT WATER RETURN FROM FIXTURE BELOW.
  2. FOR CONTINUATION SEE DRAWING PLS.
  3. 3/4" HOT WATER DOWN, 1 1/2" COLD WATER DOWN, 2" WASTE, 1 1/2" VENT, 3/4" HOT WATER RETURN FROM FIXTURES BELOW. EXTEND SERVICES AND FINAL CONNECT TO FIXTURES AS REQUIRED. PROVIDE WATER HAMMER ARRESTER "W" ON COLD WATER SERVICE IN AN ACCESSIBLE CEILING LOCATION.
  4. 4" WASTE DOWN, 2" VENT UP.
  4. WASTE DOWN, 2" VENT UP TO 3" VENT THRU ROOF.
  6. HOT WATER RETURN BALANCING SYSTEM SEE DETAIL ON DRAWING PLS.
  7. 3/4" HOT AND COLD WATER DOWN, 3" WASTE DOWN, 1 1/2" VENT UP.
  8. 1 1/2" COLD WATER DOWN, 4" WASTE DOWN, 2" VENT UP. EXTEND SERVICES AND FINAL CONNECT TO FIXTURES. PROVIDE WATER HAMMER ARRESTER "W" ON COLD WATER SERVICE IN AN ACCESSIBLE CEILING LOCATION.
  9. 1 1/2" COLD WATER DOWN, 3" WASTE DOWN, 1 1/2" VENT UP. EXTEND SERVICES AND FINAL CONNECT TO FIXTURES AS REQUIRED. PROVIDE WATER HAMMER ARRESTER "W" ON COLD WATER SERVICE IN AN ACCESSIBLE CEILING LOCATION.
  10. 2" COLD WATER DOWN, 4" WASTE DOWN, 2" VENT UP. EXTEND SERVICES AND FINAL CONNECT TO FIXTURES AS REQUIRED. PROVIDE WATER HAMMER ARRESTER "W" ON COLD WATER SERVICE IN AN ACCESSIBLE CEILING LOCATION.
  11. 3/4" COLD WATER DOWN, 3" WASTE DOWN, 1 1/2" VENT UP. EXTEND SERVICES AND FINAL CONNECT TO FIXTURES AS REQUIRED.
  12. 3/4" COLD WATER DOWN.
  13. NON-FREEZE WALL MOUNTED (FM-1) MOUNT AT +18" ABOVE FINISHED GROUND.
  14. 4" WASTE DOWN, 2 1/2" VENT UP TO 3" VENT THRU ROOF.
  15. FOR CONTINUATION SEE DRAWING PLS.
  16. 3" STORM FROM ROOF DRAIN ABOVE.
  17. 3" ROOF DRAIN LEADER DOWN. PROVIDE CLEANOUT AT BASE OF RISER +18" ABOVE FINISHED FLOOR.
  18. FOR CONTINUATION SEE DRAWING PLS.
  19. 4" WASTE WITH DEEP SEAL "T"-TRAP FROM FLOOR DRAIN ABOVE.
  20. 4" WASTE DOWN.
  21. 3" STORM FROM OVERFLOW DRAIN ABOVE.
  22. 3" OVERFLOW DRAIN PIPING DOWN AND THRU WALL AT +18" ABOVE FINISHED GROUND. SLEEVE PENETRATION AND SEAL WATER TIGHT. PAIR EXPOSED PIPE TO MATCH EXTERIOR SURFACE.
  23. 1" HOT AND 2 1/2" COLD WATER UP, 3/4" HOT WATER RETURN FROM ABOVE.
  24. 1 1/2" HOT WATER DOWN, 1 1/2" COLD WATER DOWN, 2" WASTE, 1 1/2" VENT, 3/4" HOT WATER RETURN FROM FIXTURE BELOW. EXTEND SERVICES AND FINAL CONNECT TO FIXTURES AS REQUIRED. PROVIDE WATER HAMMER ARRESTER "W" ON COLD WATER SERVICE IN AN ACCESSIBLE CEILING LOCATION.
  25. 1" HOT AND 2 1/2" COLD WATER FROM ABOVE, 3/4" HOT WATER RETURN FROM ABOVE.
  26. 1 1/2" HOT AND COLD WATER DOWN, 2" WASTE DOWN - 1 1/2" VENT UP.
  27. FINAL CONNECT 1/2" TRAP PRIMER SERVICE TO FLOOR DRAIN TRAP AS REQUIRED.
  28. 1/2" TRAP PRIMER SERVICE FROM ABOVE.

**WARNING**  
These RECORD DOCUMENTS have been prepared based on information provided by others. Fanning/Howey Associates, Inc. has not verified the accuracy and/or completeness of this information and shall not be responsible for any errors or omissions that may be incorporated as a result of erroneous information provided by others.

UNIT A  
UNIT B

UNIT A  
UNIT B

UNIT A FLOOR PLAN  
DISTING F.F. ELEV. = 728.405' 1/8" = 1'-0"

RECEIVED  
MAR 06 2007  
OHIO E.P.  
N.W.D.O.

Copyright 2001 by FANNING/HOWEY ASSOCIATES, INC.

ADDITIONS & RENOVATIONS TO  
**GROVER HILL ELEMENTARY SCHOOL**  
WAYNE TRACE SCHOOLS  
GROVER HILL, OHIO

**Fanning/Howey Associates, Inc.**  
Engineers Consultants  
Architects

UNIT A FLOOR PLAN  
DRAWN BY: J. THORSH  
CHECKED BY: J. THORSH  
DATE: APR 20, 2002  
REVISIONS NO. DATE

P2.2

GROVER HILL ELEMENTARY SCHOOL  
980551

1/8" = 1'-0"

Water lines  
Water PLANT  
Restrooms - Sinks  
Drinking Fountains

NO  
LEAD

Lead Hopper  
Sampling Sites

← W

5 sites

ALL SCL 80

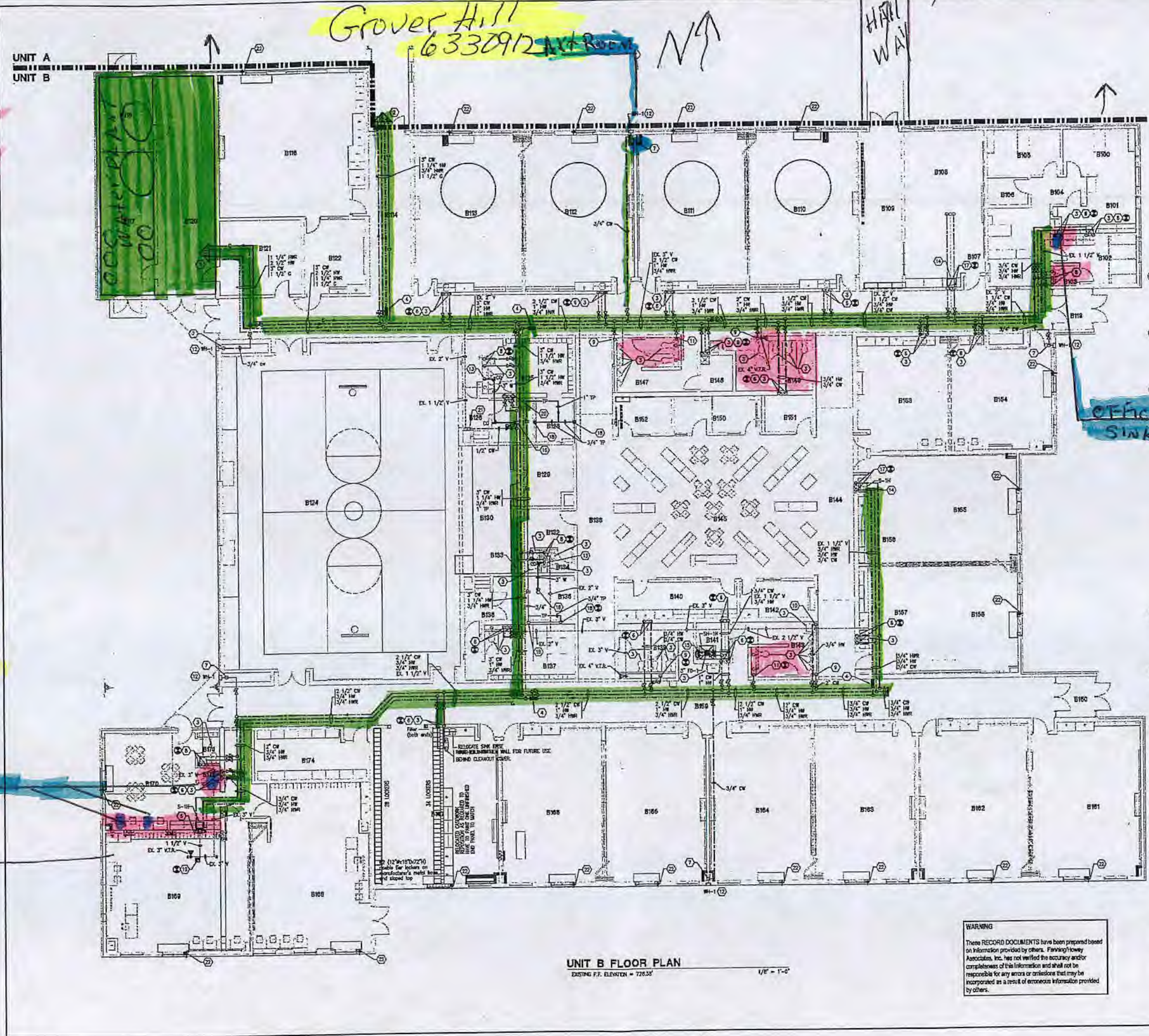
Kitchen Sink

Kitchen

Grover Hill  
6330912

UNIT A  
UNIT B

UNIT A  
UNIT B



**ROOM LEGEND - 'B'**

ROOM NO.	ROOM NAME	AREA S.F.	CEILING
B100	PRINCIPAL'S OFFICE	125	12'0"
B101	WORKROOM	125	12'0"
B102	CLERK	125	12'0"
B103	HALL	125	12'0"
B104	PLANTANT PERSONAL OFFICE	125	12'0"
B105	RECORDS	125	12'0"
B106	GENERAL OFFICE	125	12'0"
B107	TEACHERS PREP./CONF.	125	12'0"
B108	CLASSROOM	125	12'0"
B109	CLASSROOM	125	12'0"
B110	CLASSROOM	125	12'0"
B111	CLASSROOM	125	12'0"
B112	CLASSROOM	125	12'0"
B113	CLASSROOM	125	12'0"
B114	CLASSROOM	125	12'0"
B115	CLASSROOM	125	12'0"
B116	CLASSROOM	125	12'0"
B117	CLASSROOM	125	12'0"
B118	CLASSROOM	125	12'0"
B119	CLASSROOM	125	12'0"
B120	CLASSROOM	125	12'0"
B121	CLASSROOM	125	12'0"
B122	CLASSROOM	125	12'0"
B123	CLASSROOM	125	12'0"
B124	CLASSROOM	125	12'0"
B125	CLASSROOM	125	12'0"
B126	CLASSROOM	125	12'0"
B127	CLASSROOM	125	12'0"
B128	CLASSROOM	125	12'0"
B129	CLASSROOM	125	12'0"
B130	CLASSROOM	125	12'0"
B131	CLASSROOM	125	12'0"
B132	CLASSROOM	125	12'0"
B133	CLASSROOM	125	12'0"
B134	CLASSROOM	125	12'0"
B135	CLASSROOM	125	12'0"
B136	CLASSROOM	125	12'0"
B137	CLASSROOM	125	12'0"
B138	CLASSROOM	125	12'0"
B139	CLASSROOM	125	12'0"
B140	CLASSROOM	125	12'0"
B141	CLASSROOM	125	12'0"
B142	CLASSROOM	125	12'0"
B143	CLASSROOM	125	12'0"
B144	CLASSROOM	125	12'0"
B145	CLASSROOM	125	12'0"
B146	CLASSROOM	125	12'0"
B147	CLASSROOM	125	12'0"
B148	CLASSROOM	125	12'0"
B149	CLASSROOM	125	12'0"
B150	CLASSROOM	125	12'0"
B151	CLASSROOM	125	12'0"
B152	CLASSROOM	125	12'0"
B153	CLASSROOM	125	12'0"
B154	CLASSROOM	125	12'0"
B155	CLASSROOM	125	12'0"
B156	CLASSROOM	125	12'0"
B157	CLASSROOM	125	12'0"
B158	CLASSROOM	125	12'0"
B159	CLASSROOM	125	12'0"
B160	CLASSROOM	125	12'0"
B161	CLASSROOM	125	12'0"
B162	CLASSROOM	125	12'0"
B163	CLASSROOM	125	12'0"
B164	CLASSROOM	125	12'0"
B165	CLASSROOM	125	12'0"
B166	CLASSROOM	125	12'0"
B167	CLASSROOM	125	12'0"
B168	CLASSROOM	125	12'0"
B169	CLASSROOM	125	12'0"
B170	CLASSROOM	125	12'0"
B171	CLASSROOM	125	12'0"
B172	CLASSROOM	125	12'0"
B173	CLASSROOM	125	12'0"
B174	CLASSROOM	125	12'0"
B175	CLASSROOM	125	12'0"
B176	CLASSROOM	125	12'0"
B177	CLASSROOM	125	12'0"
B178	CLASSROOM	125	12'0"
B179	CLASSROOM	125	12'0"
B180	CLASSROOM	125	12'0"
B181	CLASSROOM	125	12'0"
B182	CLASSROOM	125	12'0"
B183	CLASSROOM	125	12'0"
B184	CLASSROOM	125	12'0"
B185	CLASSROOM	125	12'0"
B186	CLASSROOM	125	12'0"
B187	CLASSROOM	125	12'0"
B188	CLASSROOM	125	12'0"
B189	CLASSROOM	125	12'0"
B190	CLASSROOM	125	12'0"
B191	CLASSROOM	125	12'0"
B192	CLASSROOM	125	12'0"
B193	CLASSROOM	125	12'0"
B194	CLASSROOM	125	12'0"
B195	CLASSROOM	125	12'0"
B196	CLASSROOM	125	12'0"
B197	CLASSROOM	125	12'0"
B198	CLASSROOM	125	12'0"
B199	CLASSROOM	125	12'0"
B200	CLASSROOM	125	12'0"

UNIT B FLOOR PLAN  
EXISTING F.F. ELEVATION = 726.33' 1/8" = 1'-0"

**WARNING**  
These RECORD DOCUMENTS have been prepared based on information provided by others. Fanning/Howey Associates, Inc. has not verified the accuracy and/or completeness of this information and shall not be responsible for any errors or omissions that may be incorporated as a result of erroneous information provided by others.

- GENERAL NOTE**
- REFER TO GENERAL PLUMBING NOTES ON DRAWING P.L.D. WHICH APPLY TO THIS DRAWING.
- PLAN NOTES:**
- FOR CONTINUATION SEE DRAWING P.L.D.
  - FOR CONTINUATION SEE DRAWING P.L.D.
  - EXISTING PLUMBING FIXTURE TO REMAIN.
  - HOT WATER BETWEEN EXISTING SINKS SEE DETAIL ON DRAWING P.L.D.
  - 3/4" HOT AND COLD WATER DOWN, 2" WASTE DOWN, 1 1/2" VENT UP.
  - 3/4" HOT AND COLD WATER DOWN, EXTEND AND FINAL CONNECT TO EXISTING FIXTURE AS REQUIRED.
  - 3/4" COLD WATER DOWN.
  - 1/2" HOT WATER, 1 1/2" COLD WATER DOWN, EXTEND SERVICES AND FINAL CONNECT TO FIXTURES AS REQUIRED. PROVIDE WATER HAMMER ARRESTER "W" ON COLD WATER SERVICE IN AN ACCESSIBLE CEILING LOCATION.
  - 2" COLD WATER DOWN, EXTEND SERVICE AND FINAL CONNECT TO FIXTURES AS REQUIRED. PROVIDE WATER HAMMER ARRESTER "W" ON COLD WATER SERVICE IN AN ACCESSIBLE CEILING LOCATION.
  - 3/4" HOT WATER DOWN, EXTEND AND FINAL CONNECT TO FIXTURE AS REQUIRED.
  - 1 1/2" COLD WATER DOWN, EXTEND SERVICE AND FINAL CONNECT TO FIXTURES AS REQUIRED. PROVIDE WATER HAMMER ARRESTER "W" ON COLD WATER SERVICE IN AN ACCESSIBLE CEILING LOCATION.
  - NON-FREEZE WALL MOUNTED AT +10" ABOVE FINISHED GRADE.
  - 2" WASTE DOWN, CONNECT TO HORIZONTAL WASTE PIPING IN CHASE.
  - FIXTURE TO REMAIN IN BASE BID CONTRACT.
  - 3/4" HOT AND COLD WATER DOWN, EXTEND AND FINAL CONNECT TO SHOWER AS REQUIRED.
  - 2" WASTE WITH DEEP SEAL "V"-TRIP FROM FLOOR DRAIN ABOVE, FLOOR DRAIN TO BE TYPE 3" PD-1.
  - 3/4" HOT AND COLD WATER DOWN, EXISTING 2" WASTE DOWN - 1 1/2" VENT, FINAL CONNECT SERVICES TO PLUMBING FUTURE.
  - 3/4" TEMPERED WATER DOWN, FINAL CONNECT TO EXISTING SHOWER VALVE AS REQUIRED.
  - CONNECT TO EXISTING PIPING AT THIS POINT.
  - CONNECT NEW SERVICES TO EXISTING THERMOSTATIC MIXING VALVE AS REQUIRED.
  - 1/2" COLD WATER DOWN.
  - COORDINATE 2" CONNECTIONS FROM EXISTING WITH MECHANICAL EQUIPMENT AS REQUIRED. EXTEND FROM LINE TO "W" ABOVE FINISHED GRADE. FINAL EXTENDER EXTENDED PIPE TO MATCH EXISTING.

COPYRIGHT 2001 BY FANNING/HOWEY ASSOCIATES, INC.

ADDITIONS & RENOVATIONS TO  
**GROVER HILL**  
ELEMENTARY SCHOOL  
WAYNE TRACE SCHOOLS  
GROVER HILL, OHIO

**Fanning/Howey Associates, Inc.**  
Engineers Consultants  
Architects

UNIT B FLOOR PLAN  
DRAWN BY: ST  
CHECKED BY: AJ  
DATE: 04.30.2007  
PROJECT NO. DATE  
P.2.4

OHIO E.P.A.  
N.W.D.O.  
MAR 06 2017