

Village of Waverly

Public Water System Lead (Pb) Components

PWS ID OH-6600912

Prepared February 2017

To comply with Section 6109.21 of the Ohio Revised Code, enacted in September 2016, The Village of Waverly in Pike County, Ohio has created the following report and attached map to identify known and potential components of its public water system that contain lead (Pb).

Service Lines and Ownership

The Village of Waverly distributes water to approximately 2,074 customer caps. The Village of Waverly owns and maintains service lines from the water distribution mains up to the curb stops. The remainder of each service line from the curb stop to the dwelling is the responsibility of the property owner. Line from main to curb stop at property lines are typically copper, some galvanized services still do exist in the older part of town which was originally constructed in the 1940's and later.

Since the original construction of the water system in the 1940's, lead pipe has never been installed in this distribution system. While lead solder may have been used in the installation process for some of the private copper service lines and cast iron, this is not un-common and there are no lead pipes used.

Distribution System

The village of Waverly produces treated ground water and distributes potable water through approximately 50.3 miles of water main lines with varying pressures from 60-100 psi throughout the system. Since the original construction some sections have been replaced with PVC material since 1980's, and emergency repairs when necessary. Within the distribution system, none of the pipes themselves are known to contain any lead, however, there are joints within the system that contain lead solder. Any 4" or smaller pipes that are located throughout the distribution system are predominately cast iron and galvanized, these are the oldest lines in the system and are in the oldest part of town originally constructed sometime in the 1940's. Even though no lead has ever been encountered after discovering a vast amount of cast iron that predates the use of ductile iron, it is best to assume that the cast iron is lead soldered.

Pipe sections which may contain lead in the joints or valves are highlighted in orange.

Also, the water meters at each customer location as old as 2012 and may contain less than 8% lead. There are meters installed before 1998 which may contain more than 8% lead. Meters installed after 2014 will have less than 0.25% lead. A large percentage of meters for the Village of Waverly, approximately 90%, are

older and no longer approved due to possible lead content. These meters are slowly being replaced for newer approved meters.

The table below shows which lines may or may not have lead solder or fittings according to pre or post regulation.

Probability of Lead Solder and Fittings in Water Main		
Lead in Water Main Materials	Feet of Pipe	% of System
Probable (material typical pre-1998)	239,040	90
Improbable (material typical post-1998)	26,560	10

Indoor Plumbing

Buildings in Ohio built prior to 1998 or that use plumbing material or solder manufactured before 1998 may have materials with greater than 8% lead and are at a higher risk of contributing lead to the drinking water than materials manufactured after 1998.

Buildings built and plumbing materials manufactured after 2014 were required to have less than 0.25% lead by weight and have the lowest risk for contributing lead to the drinking water. It should be noted however that, although prohibited, some use of leaded solder or leaded components may have occurred after the prohibitions became effective.

In the Village of Waverly, there are approximately eight known structures built since 2014, and therefore nearly all buildings in the district may have some lead in the solder or fixtures. If a service line is changed it is required to have $\frac{3}{4}$ " copper with a minimum of 200 psi. The Village of Waverly distribution and collection department employees are licensed through the Ohio EPA and therefore no inspection is necessary unless a contractor is used and therefore a licensed employee will than inspect the work.

Customer Self-Reporting

The information on this map regarding privately owned service lines is based on the limited information from the water system staff and Pike County building and parcel data. Property owners are encouraged to inspect their own service lines entering the building if these are in anyway exposed, and notify the Village of Waverly if they have determined whether or not a lead service line exists. Please contact the Distribution Superintendent by calling 740-947-4888 or sending an email to wateroffice@cityofwaverly.net . A representative from the water department will contact you to confirm and update this information for the next map release.

Contacts and Resources

If you have questions about known and potential lead components within the Waverly Public Water System, please contact:

Tom Chandler, Distribution Superintendent

211 W. North Street

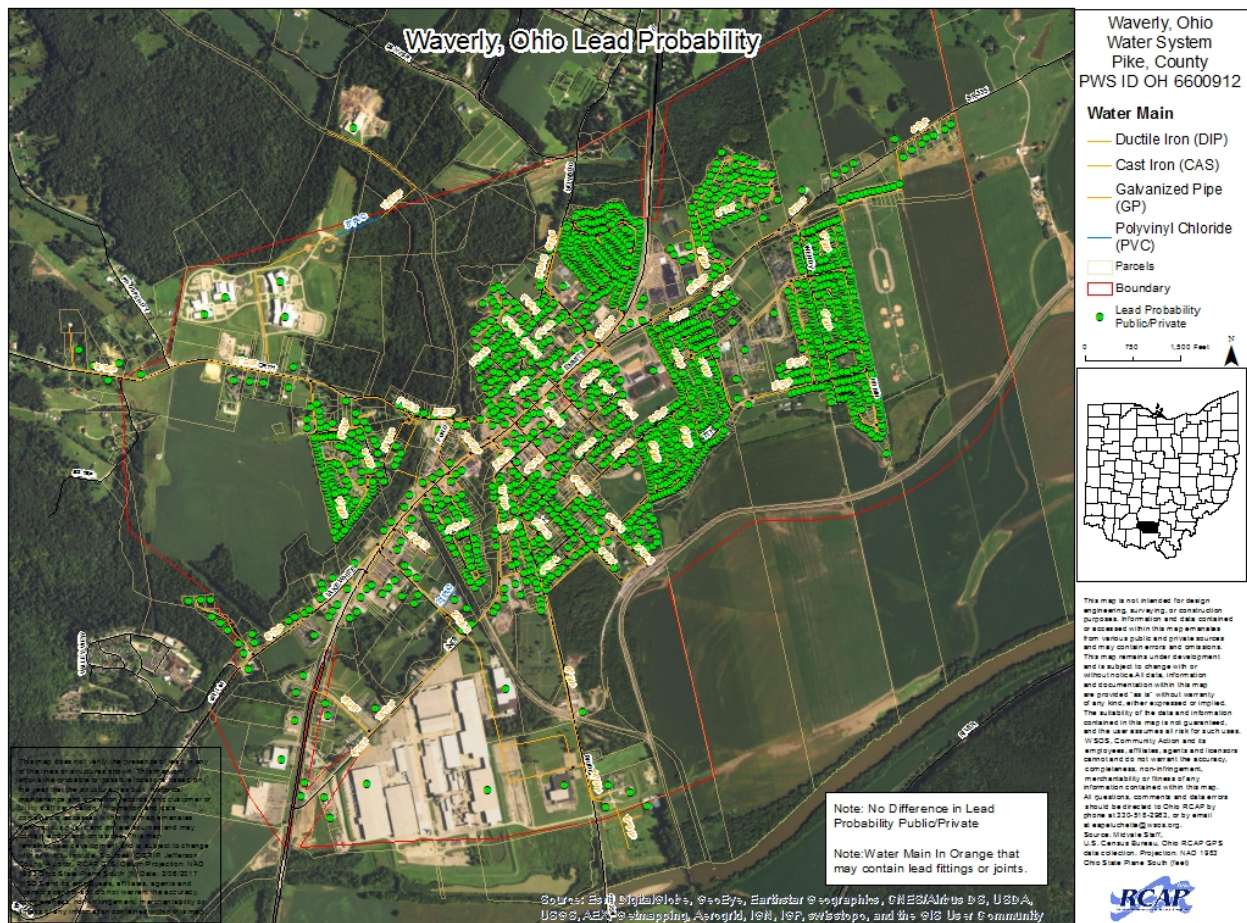
Waverly, Ohio 45690

740-947-4888

For more information about lead service lines and their removal, we recommend the following resources:

- **The Lead Service Line Replacement Collaborative**
<http://www.lslr-collaborative.org/resources-for-concerned-consumers.html>
- **Ohio EPA 'Learn About Lead' page**
<http://epa.ohio.gov/pic/lead.aspx>
- **US EPA Lead in Drinking Water Information Page**
<https://www.epa.gov/ground-water-and-drinking-water/basic-information-about-lead-drinking-water>

Village of Waverly Public Water Distribution System Lead Components and Lead Service Lines Map



Lead and Copper Sample Sites

Waverly, Ohio
Water System
Pike, County
PWS ID OH 6600912

Lead and Copper Sample Sites

- ★ Other
- ★ Tier 1
- ★ Tier 2
- ★ Tier 3
- Water Main
- Parcels
- Boundary

0 750 1,500 Feet



This map is not intended for design engineering, surveying, or construction purposes. Information and data contained or accessed within this map emanates from various public and private sources and may contain errors and omissions. This map remains under development and is subject to change with or without notice. All data, information and documentation within this map are provided "as is" without warranty of any kind, either expressed or implied. The suitability of the data and information contained in this map is not guaranteed, and the user assumes all risk for such uses. WSOS, Community Action and its employees, affiliates, agents and licensors cannot and do not warrant the accuracy, completeness, non-infringement, merchantability or fitness of any information contained within this map. All questions, comments and data errors should be directed to Ohio RCAP by phone at 330-518-2963, or by email at eapeluchette@wsos.org. Source: Midvale Staff, U.S. Census Bureau, Ohio RCAP GPS data collection. Projection: NAD 1983 Ohio State Plane South (feet)



This map does not verify the presence of lead in any of the lines or structures shown. This map only shows the probable or possible locations based on the year that the structure was built, historical maintenance and operation records, and customer or utility staff verification. Information and data contained or accessed within this map emanates from various public and private sources and may contain errors and omissions. This map remains under development and is subject to change with or without notice. Sources: OGRIP, Jefferson County Auditor, RCAP GIS, Datum/Projection: NAD 1983 Ohio State Plane South (ft) Date: 3/06/2017 WSOS and its employees, affiliates, agents and licensors cannot and do not warrant the accuracy, completeness, non-infringement, merchantability or fitness of any information contained within this map.

Source: Esri, DigitalGlobe, GeoEye, Earthstar Geographics, CNES/Airbus DS, USDA, USGS, AeroGRID, IGN, IGP, swisstopo, and the GIS User Community