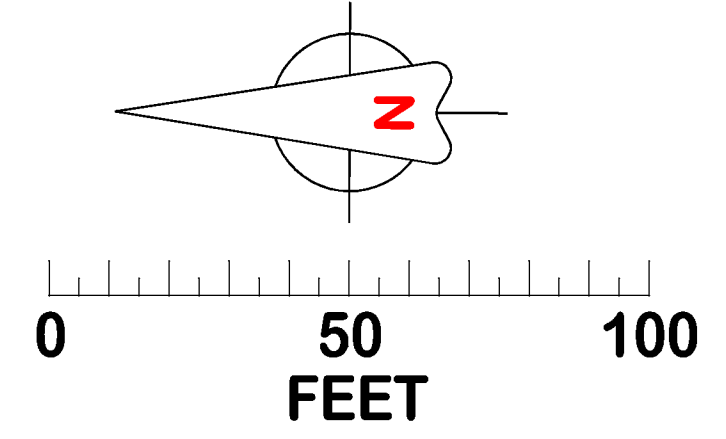
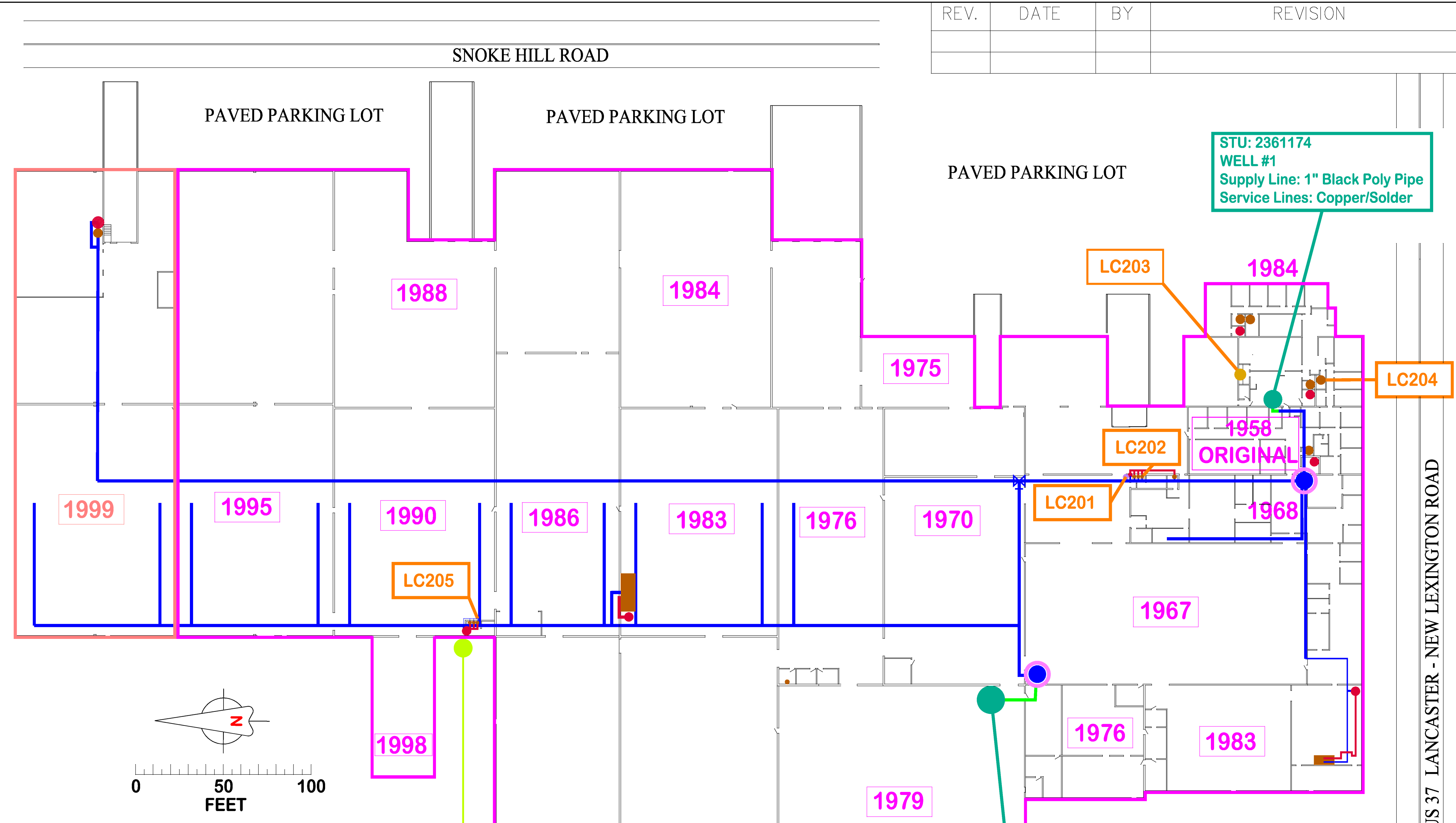


REV.	DATE	BY	REVISION



- KITCHEN SINK
- DRINKING FOUNTAIN
- WASH SINK
- PRESSURE TANK
- HOT WATER TANK
- POTABLE WELL

**POTENTIAL LEAD EXISTANCE BASED ON DATE OF CONSTRUCTION:**

- <1998 NO LEAD LIMIT
- >1998 - 2014 LEAD SOLDER BANNED. LOWERING CONTENT OF LEAD & BRASS.
- > 2014 LEAD CONTENT <.25%
- HOT WATER LINE
- SUPPLY LINE (COLD WATER LINE)
- COPPER PIPE & SOLDER CONNECTIONS
- SERVICE LINE 1" BLACK POLY PIPE

THE ORIGINAL BUILDING WAS CONSTRUCTED IN 1959. ALL BUT THE ORIGINAL BUILDING WAS CONSTRUCTED BY MAX STEBLETON CONTRACTORS INC. PER THE DATES SHOWN.

THE ORIGINAL WELL #1 (STU 2361174) IS CURRENTLY INSIDE THE PLANT WITH A SEALED BOX, THE WELL DEPTH IS AROUND 40-50 FT. DEEP. IT HAS A 5" DIAMETER STEEL CASING.

THE SECOND WELL, WELL #2 (STU 2361184) WAS DRILLED ON 10/9/1976 AND IS NOW LOCATED UNDER THE PRESSROOM FLOOR WITH A SEALED BOX DUE TO BUILDING EXPANSION. THE DEPTH OF THIS WELL IS 39.5 FEET. THE STEEL CASING IS 5" DIAMETER.

SUPPLY LINES FOR BOTH STU 2361174 & STU 2361184 ARE 1" BLACK POLY PIPE WHICH TRANSITIONS TO COPPER SERVICE LINES WITH SOLDERED CONNECTIONS AFTER THE PRESSURE TANKS. BOTH PRESSURE TANKS HAVE 40 - 60 PSI PRESSURE SWITCHES TO MAINTAIN PROPER LINE OPERATION.

THE DATE OF CONSTRUCTION WILL DETERMINES THE MAXIMUM LIMIT OF POSSIBLE LEAD EXPOSURE IN THE SERVICE LINES DUE TO THE APPROVED MATERIALS USED AT THAT TIME.

**STU: 2361184  
WELL #2  
Supply Line: 1" POLY PIPE  
Service Lines: - Copper/Solder**

**STU: 2361174  
WELL #1  
Supply Line: 1" Black Poly Pipe  
Service Lines: Copper/Solder**

**The CYRIL-SCOTT COMPANY  
3950 Lancaster - New Lexington Rd.  
Lancaster, OH 43130  
(740) 654-2112**

**PWS NAME: The CYRIL-SCOTT COMPANY  
PWS: OH2348412  
STU: 2361174  
STU: 2361184  
NON TRANSIENT - NON COMMUNITY**

CYRIL-SCOTT			
PLACE DRAWING No. ON THIS SURFACE	TITLE: BUILDING LAYOUT LEAD MAPPING & SMP I.D.		
TOLERANCES UNLESS OTHERWISE SPECIFIED FRACT. ±1/64 X.XX ±.010 X.XXX ±.001 ANGLES ±1/2°	DRAWN BY: C.F.	DATE: 02.24.17	SCALE: 1/32" = 1'
MATERIAL:	QUANTITY REQ'D.	USED ON:	
DRAWING NO. BLDG-0224-2017-01	REV. 1		

BLD-0224-2017-01  
DRAWING NO.