

# Twin City Water & Sewer District, Ohio

## Public Water System Lead (Pb) Components

PWSID# OH7901711

Prepared March 4, 2017

To comply with Section 6109.21 of the Ohio Revised Code, enacted in September 2016, the Twin City WSD in Tuscarawas County, Ohio has created the following report and attached map to identify known and potential components of water service lines that contain lead (Pb).

The following information and attached map do not verify the presence of lead in any of the plumbing components or structures shown. The information and map only show the probable or possible locations based on the year that structures were built, or by the year that the plumbing component was installed.

RCAP staff and the Twin City WSD Department met on February , 2017 to review a map of the service area. No applicable historical maintenance and operation records, tap cards, or as-builts were available to identify lead component locations. Locations where lead service components have been replaced, and locations where lead components are likely still being used, were identified by Twin City WSD Department and recorded in a GIS database.

The digital maps provided depicts the parcels the public water system serves, possible locations that may contain lead materials, and residential structure plumbing that may contain lead solder and flux based on structure construction date. Twin City WSD has not discovered any lead service lines on the public side of the water system. Based on the age of some sections, there is a moderate probability that some of the older infrastructure may or may not contain a lead service connection on the public water side of the distribution system.

### Public and Private Ownership of Service Lines

Twin City WSD distributes water to approximately 3,834 customers among 5,269 parcels in the service area. Twin City WSD owns and maintains service lines from the water distribution mains up to the curb stop for each water customer. The remainder of each service line from the curb stop to the building is the responsibility of the property owner. The public service lines were identified as having a moderate probability of lead based on the material and or age of the infrastructure.

The tables summarize the probability of lead service lines on the public side and private side. The age of the infrastructure, year of replacement projects, and pipe material determines which category each service line was assigned.

Public Service Line Lead Probability Parcel Based		
Possibility of Lead	Public Lines #	% of System
Non Lead	2801	73%
Moderate Probability	1033	27%

Private Service Line Lead Probability		
Possibility of Lead	Private #	% of System
Non-Lead	3834	100%

### Distribution System

Within the distribution system, none of the main lines themselves are known to contain any lead, however, there may be joints, valves, and fittings within the system that may contain lead on some of the older mains. There were no lead services detected on the residential (private) side of lateral line. Meters installed after 2014 will have less than 0.25% lead.

Twin City WSD has approximately 59.4 miles of water main lines. The oldest sections of the water system were installed starting in 1888.

### Indoor Plumbing

Buildings in Ohio built prior to 1998 or that use plumbing material or solder manufactured before 1998 may have materials with greater than 8% lead and are at a higher risk of contributing lead to the drinking water than materials manufactured after 1998.

Buildings built and plumbing materials manufactured after 2014 were required to have less than 0.25% lead by weight and have the lowest risk for contributing lead to the drinking water. It should be noted however that, although prohibited, some use of leaded solder or leaded components may have occurred after the prohibitions became effective.

### Customer Self-Reporting

The information on this map regarding privately owned service lines is based on the limited information from the water system staff and Tuscarawas County building and parcel data. Property owners are encouraged to inspect their own service lines entering the building if these are in anyway exposed, and

notify Twin City Water Department if they have determined whether or not a lead service line exists. Please contact Twin City WSD by calling (740)922-1460. A representative from the water department will contact you to confirm and update this information for the next map release.

### **Contacts and Resources**

If you have questions about known and potential lead components within Twin City WSD System, please contact:

Donnie Fawcett  
(330)340-5868  
fawcetttonnie@twincityws.com

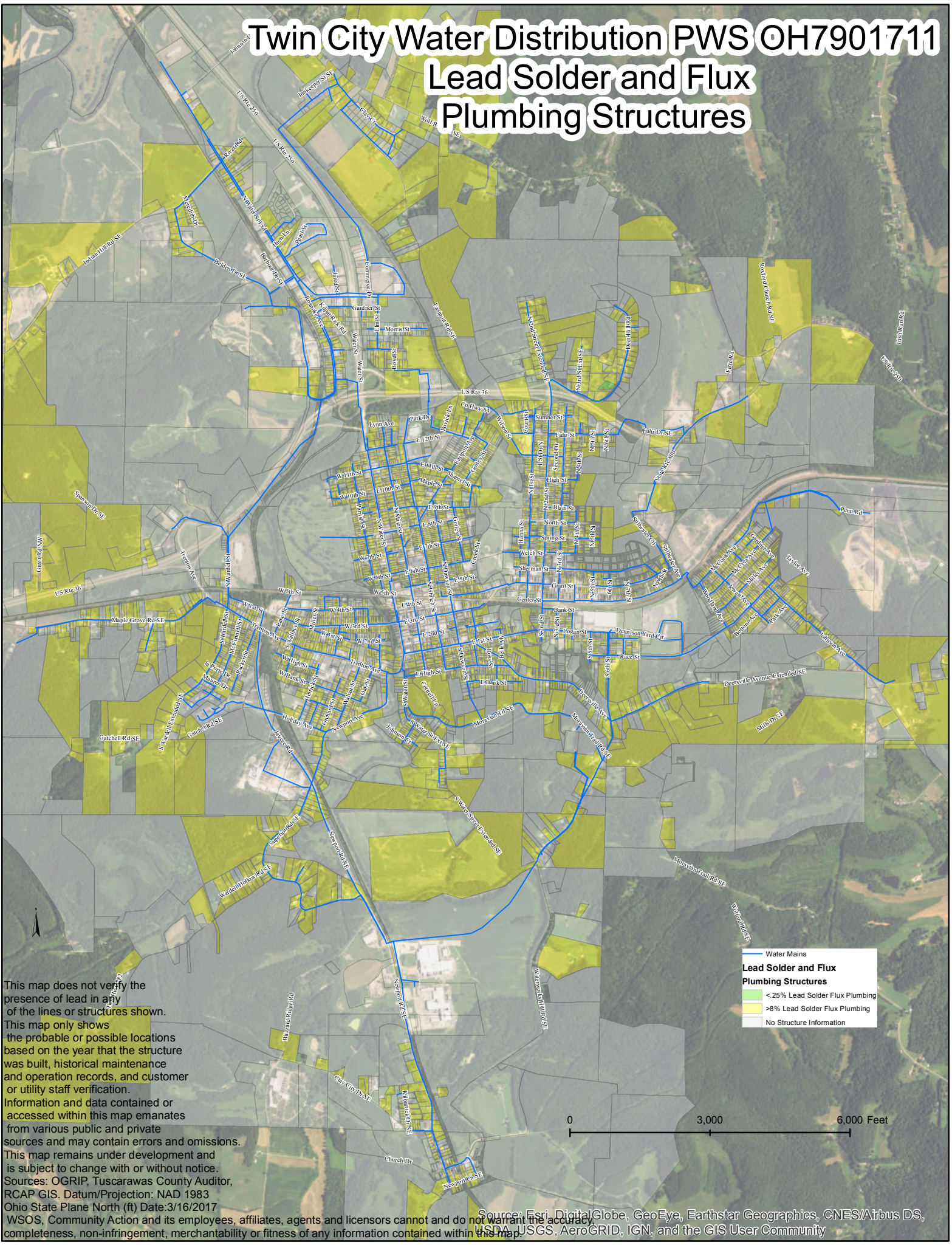
For more information about lead service lines and their removal, we recommend the following resources:

- **The Lead Service Line Replacement Collaborative**  
<http://www.lslr-collaborative.org/resources-for-concerned-consumers.html>
- **Ohio EPA 'Learn About Lead' page**  
<http://epa.ohio.gov/pic/lead.aspx>
- **US EPA Lead in Drinking Water Information Page**  
<https://www.epa.gov/ground-water-and-drinking-water/basic-information-about-lead-drinking-water>



# Twin City Water Distribution PWS OH7901711

## Lead Solder and Flux Plumbing Structures

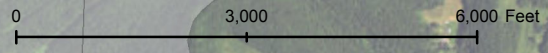


This map does not verify the presence of lead in any of the lines or structures shown. This map only shows the probable or possible locations based on the year that the structure was built, historical maintenance and operation records, and customer or utility staff verification. Information and data contained or accessed within this map emanates from various public and private sources and may contain errors and omissions. This map remains under development and is subject to change with or without notice. Sources: OGRIP, Tuscarawas County Auditor, RCAP GIS. Datum/Projection: NAD 1983 Ohio State Plane North (ft) Date: 3/16/2017 WSOS, Community Action and its employees, affiliates, agents and licensors cannot and do not warrant the accuracy, completeness, non-infringement, merchantability or fitness of any information contained within this map.

— Water Mains

**Lead Solder and Flux Plumbing Structures**

- < 25% Lead Solder Flux Plumbing
- > 8% Lead Solder Flux Plumbing
- No Structure Information

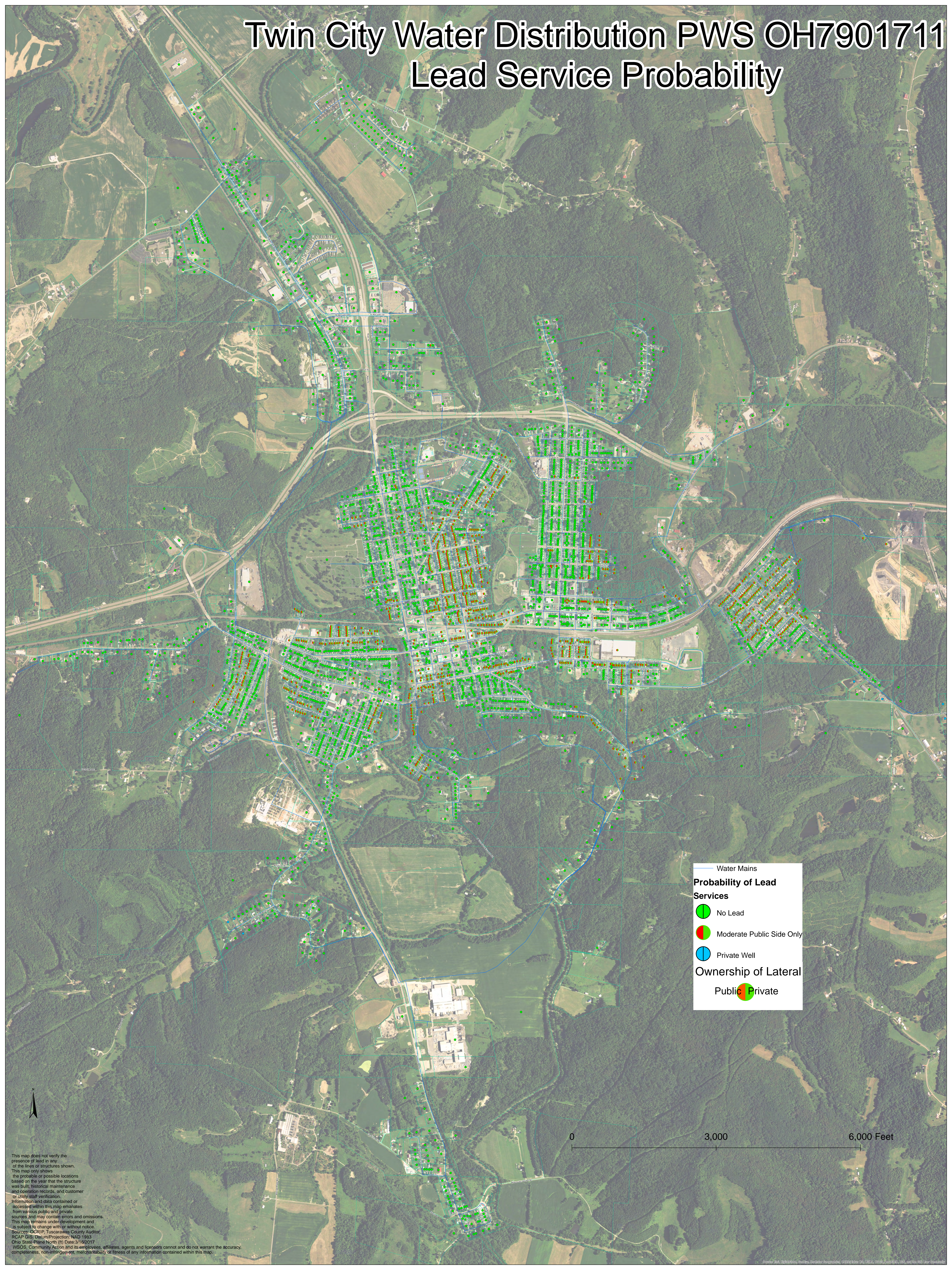


Source: Esri, DigitalGlobe, GeoEye, Earthstar Geographics, CNES/Airbus DS, USDA, USGS, AeroGRID, IGN, and the GIS User Community



# Twin City Water Distribution PWS OH7901711

## Lead Service Probability



— Water Mains

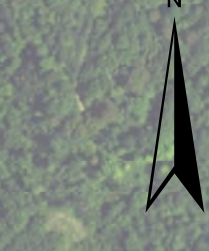
**Probability of Lead Services**

- No Lead
- Moderate Public Side Only
- Private Well

**Ownership of Lateral**

Public Private

0 3,000 6,000 Feet



This map does not verify the presence of lead in any of the lines or structures shown. This map only shows the probable or possible locations based on the year that the structure was built, historical maintenance and operation records, and customer or utility staff verification. Information and data contained or accessed within this map emanates from various public and private sources and may contain errors and omissions. This map remains under development and is subject to change with or without notice. Sources: GGRIP, Tuscarawas County Auditor, RCAP GIS, Datum/Projection: NAD 1983 Ohio State Plane North (ft) Date: 3/16/2017 WSOS, Community Action and its employees, affiliates, agents and licensors cannot and do not warrant the accuracy, completeness, non-infringement, merchantability or fitness of any information contained within this map.