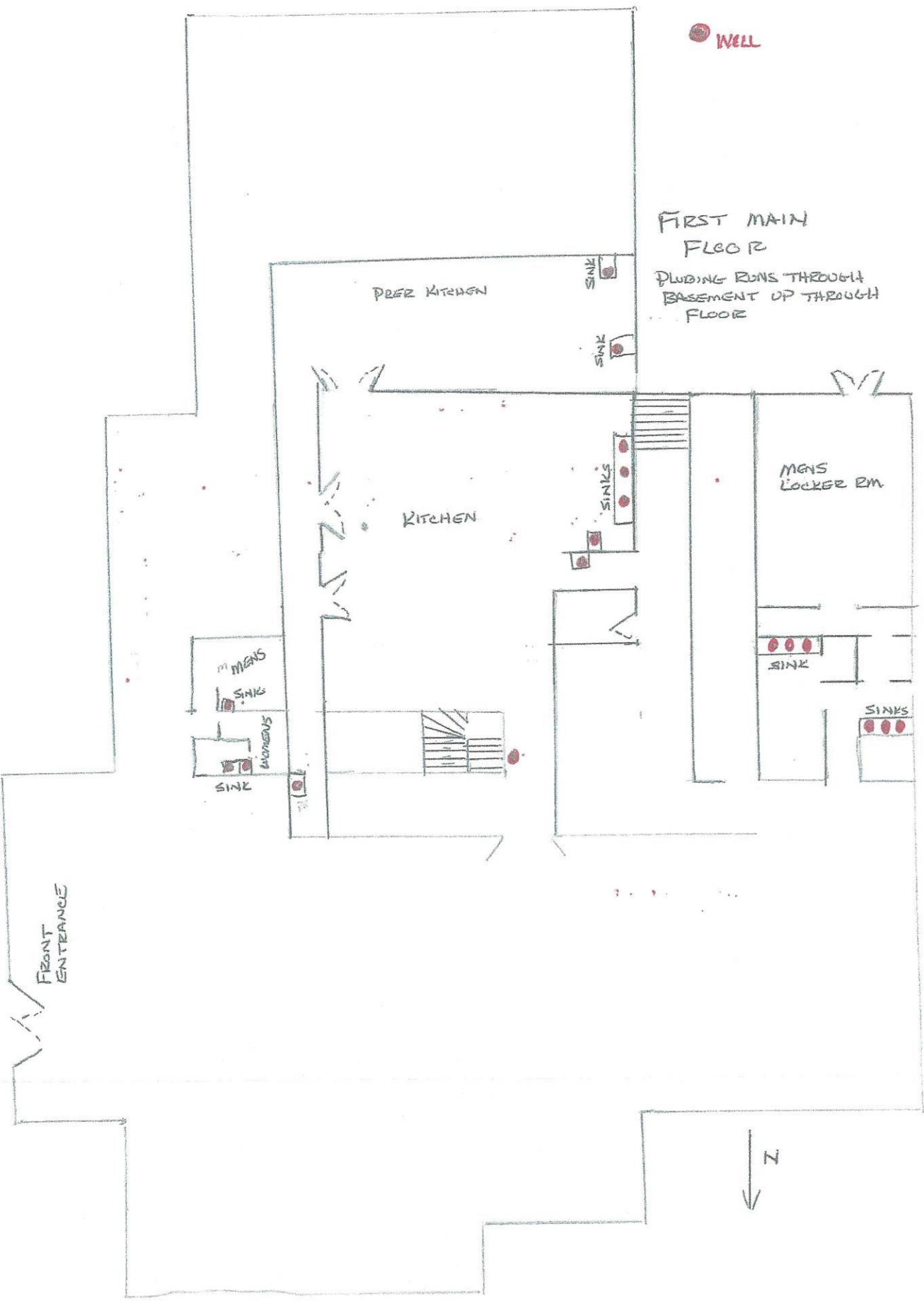
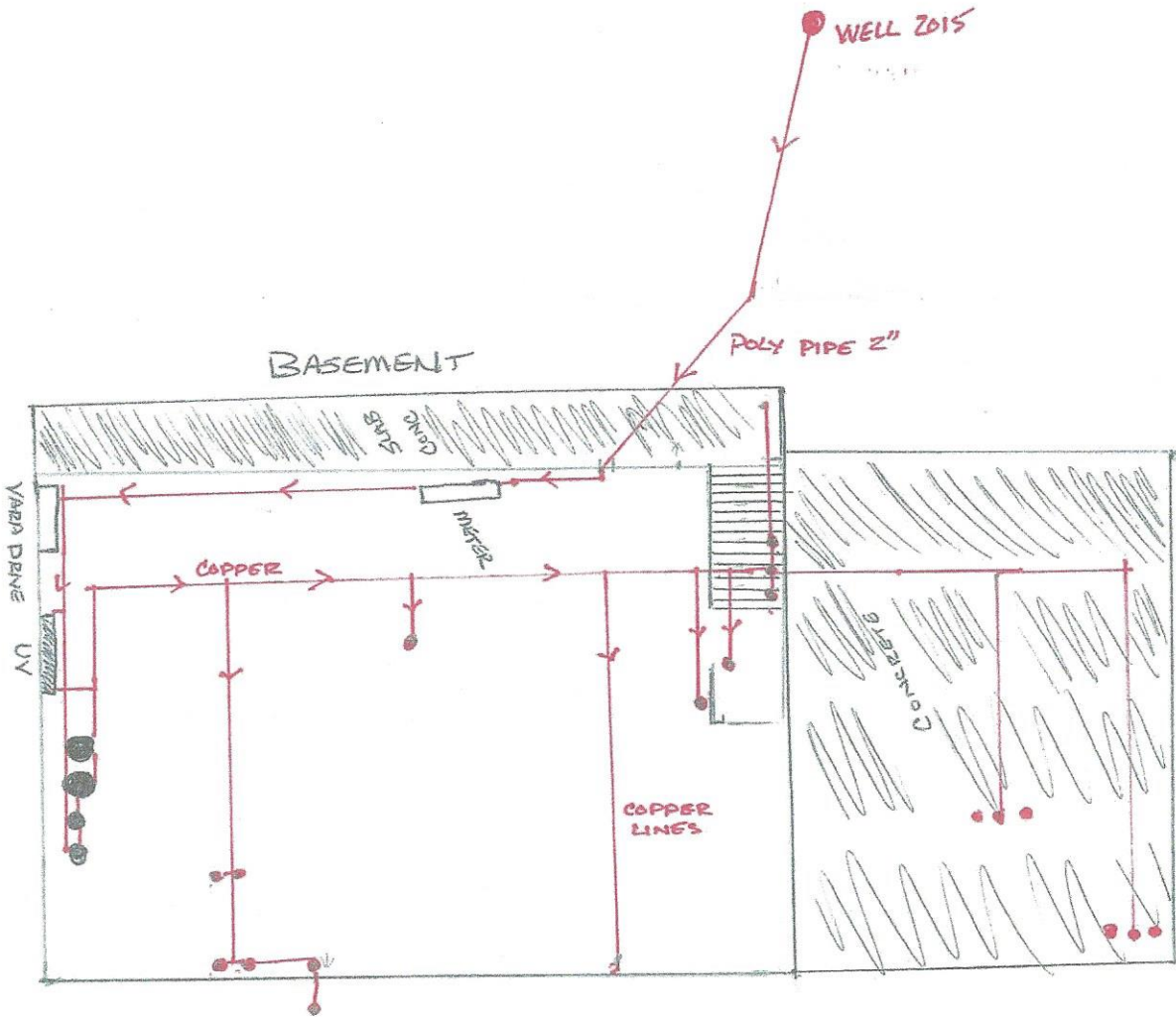


BROOKSIDE GOLF & COUNTRY CLUB (COUNTRY CLUB)

PWS 2556412

"Buildings in Ohio built prior to 1998 or that use plumbing material or solder manufactured before 1998 may have materials with greater than 8% lead and are at a higher risk of contributing lead to the drinking water than materials manufactured after 1998. In addition, buildings built and plumbing materials manufactured after 2014 were required to have less than 0.25% lead by weight and have the lowest risk for contributing lead to the drinking water. It should be noted however that, although prohibited, some use of leaded solder or leaded components may have occurred after the prohibitions became effective."





BROOKSIDE GOLF & COUNTRY CLUB (COUNTRY CLUB)

PWS. ZSSSCHIZ

2270 DUBLIN-GRANVILLE RD. WORTHINGTON, OH

OP OF REC. PAT HICKMAN - 614-578-6203

CLUB HOUSE RECONSTRUCTED 1999

● - COPPER LINES & FIXTURES
1999

"Buildings in Ohio built prior to 1998 or that use plumbing material or solder manufactured before 1998 may have materials with greater than 8% lead and are at a higher risk of contributing lead to the drinking water than materials manufactured after 1998. In addition, buildings built and plumbing materials manufactured after 2014 were required to have less than 0.25% lead by weight and have the lowest risk for contributing lead to the drinking water. It should be noted however that, although prohibited, some use of leaded solder or leaded components may have occurred after the prohibitions became effective."

