



The City Of Portsmouth Water Treatment Plant  
4862 Gallia Street  
Portsmouth, Ohio 45662

March 7, 2017

Mr. Taylor Carpenter  
Ohio Environmental Protection Agency  
Southeast District Office  
2195 Front Street  
Logan, OH 43138

Re: Ohio Environmental Protection Agency (OEPA) Potential Lead Service Mapping

Dear Mr. Carpenter:

The Portsmouth Water System serves both residential and commercial structures with a wide range of ages.

Map Explanation:

1. The areas shaded in orange include buildings built prior to 1998, and may likely have plumbing materials with greater than 8 percent lead by weight. These are known as high risk areas.
2. The areas shaded in red show buildings built after 2014 and were required to have plumbing materials with less than 0.25 percent lead by weight. These are known as low risk areas.
3. The yellow shaded areas include buildings built between 1998 and 2014. These areas are likely to have plumbing materials made with less than 8 percent, but greater than 0.25 percent lead by weight.

Overall, the areas with a high risk of plumbing materials with greater than 8 percent lead by weight are located evenly throughout the Portsmouth Water System. The Portsmouth Water System extends throughout Friendship, West Portsmouth, Portsmouth, Rosemount, New Boston, Wheelersburg, and Franklin Furnace, Ohio.

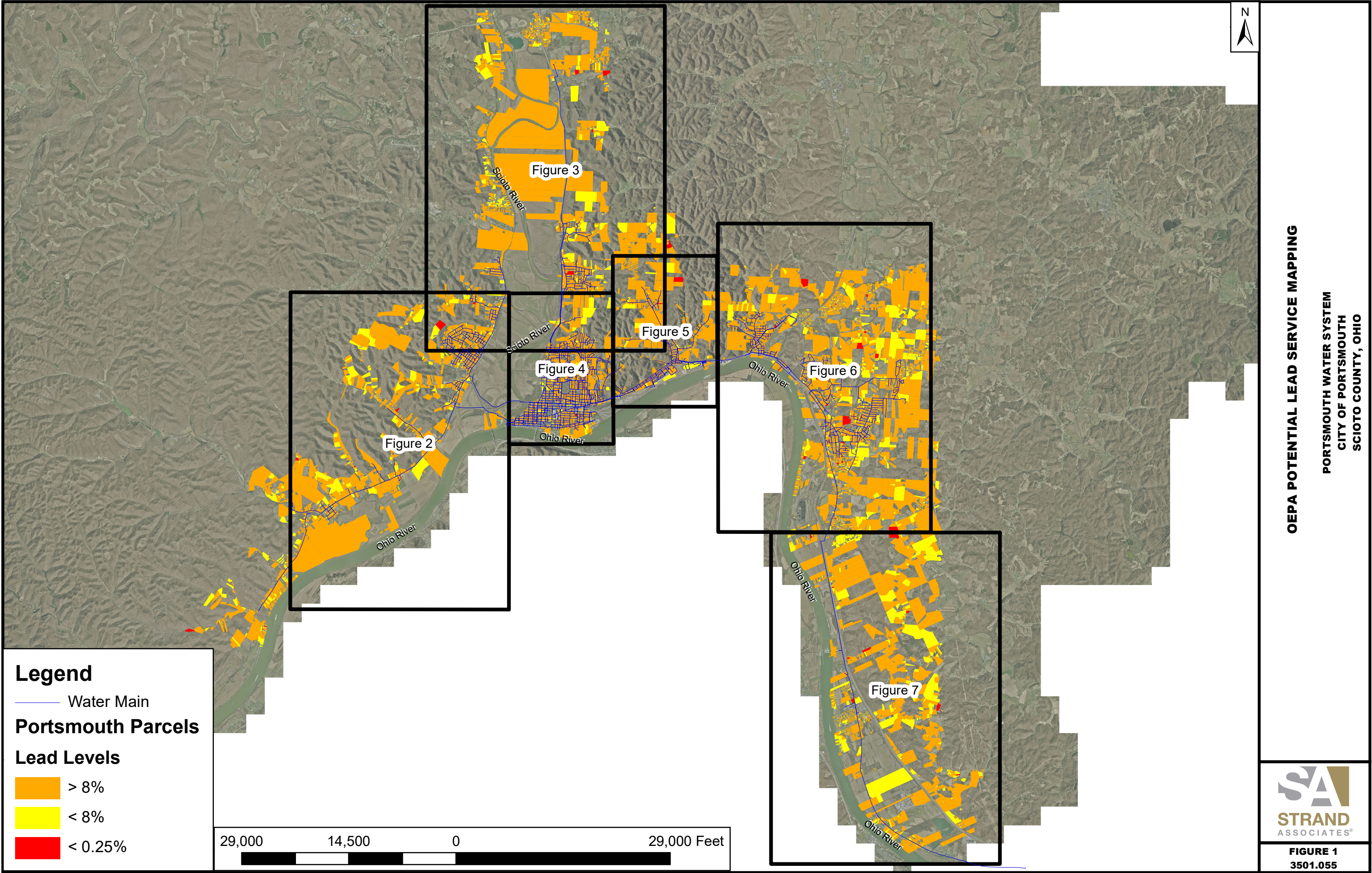
Sincerely,

A handwritten signature in blue ink, appearing to read "S. Sutherland".

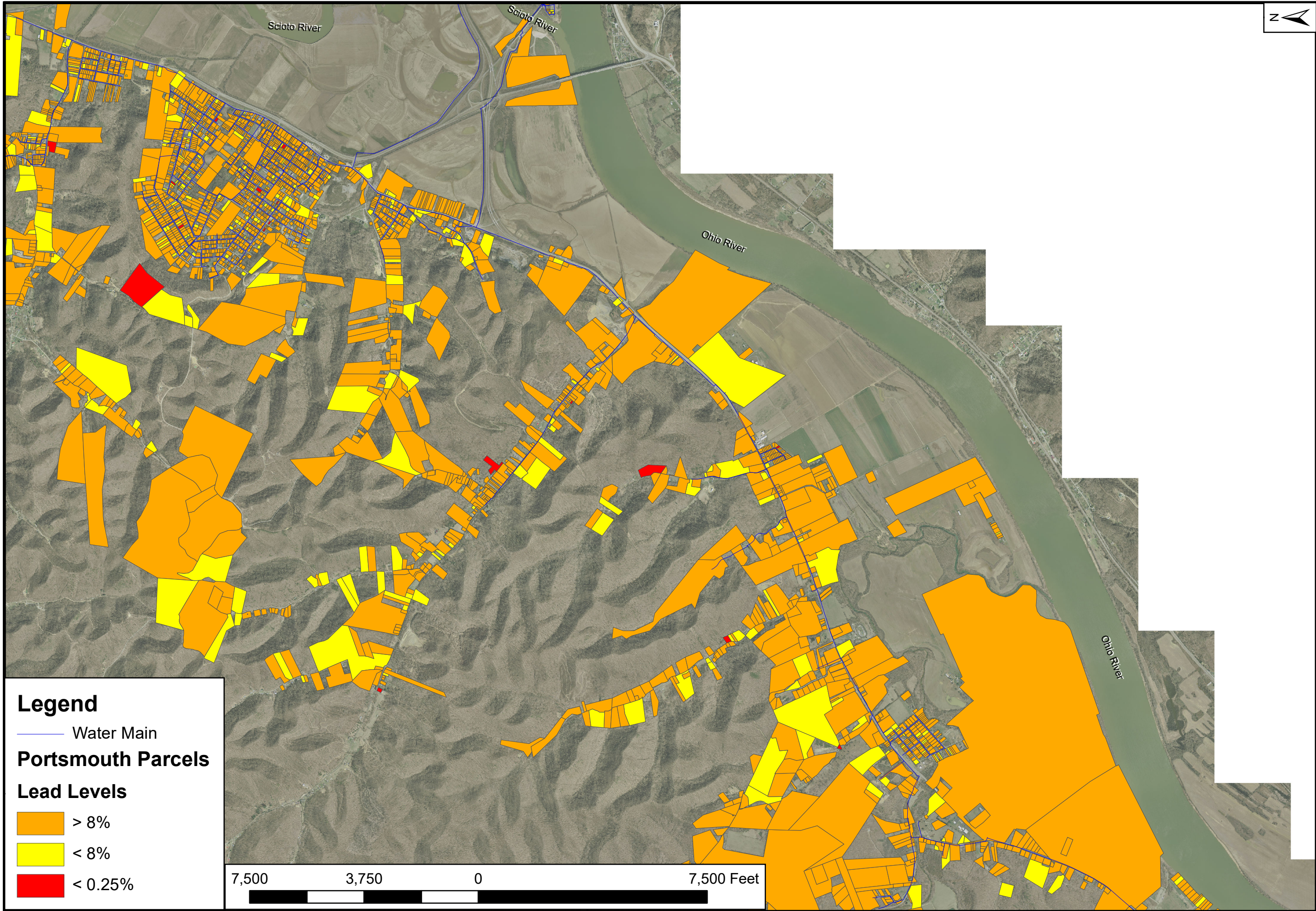
Sam Sutherland  
Public Utilities Director, Water

Enclosure









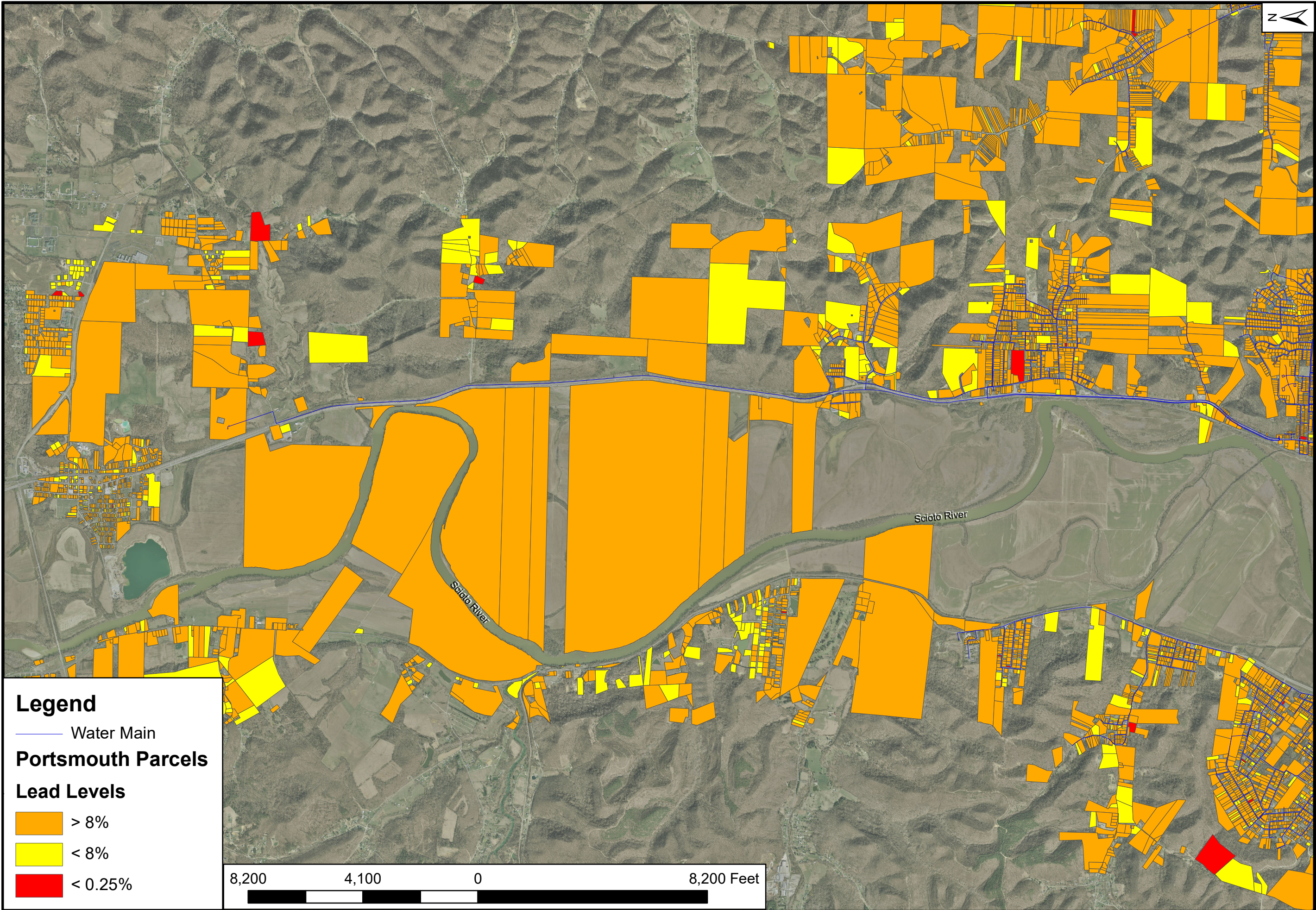
OEPA POTENTIAL LEAD SERVICE MAPPING

PORTSMOUTH WATER SYSTEM  
CITY OF PORTSMOUTH  
SCIOTO COUNTY, OHIO



FIGURE 2  
3501.055





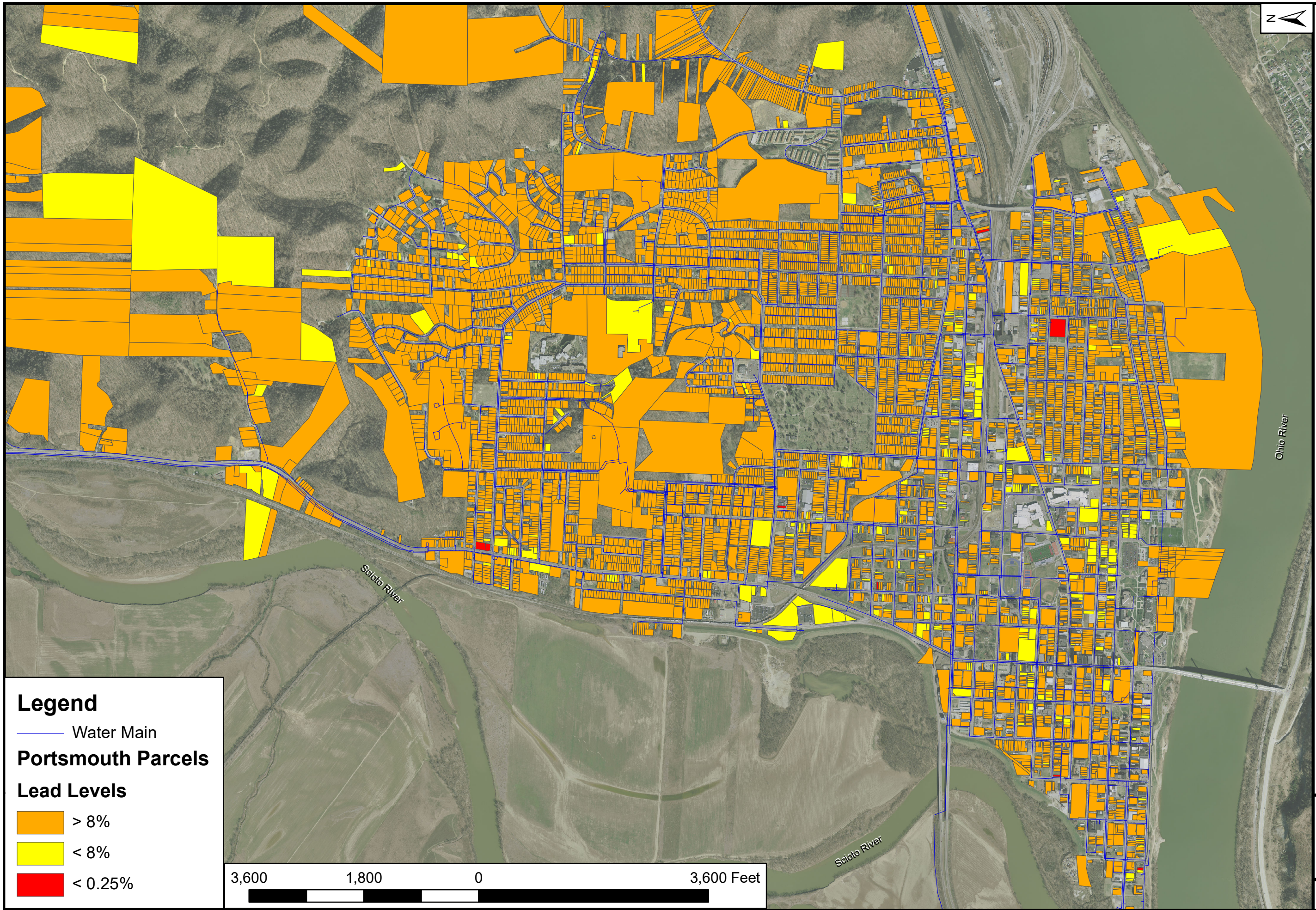
**OEPA POTENTIAL LEAD SERVICE MAPPING**

**PORTSMOUTH WATER SYSTEM  
CITY OF PORTSMOUTH  
SCIOTO COUNTY, OHIO**



**FIGURE 3  
3501.055**





## Legend

— Water Main

## Portsmouth Parcels

### Lead Levels

Orange > 8%

Yellow < 8%

Red < 0.25%

3,600 1,800 0 3,600 Feet

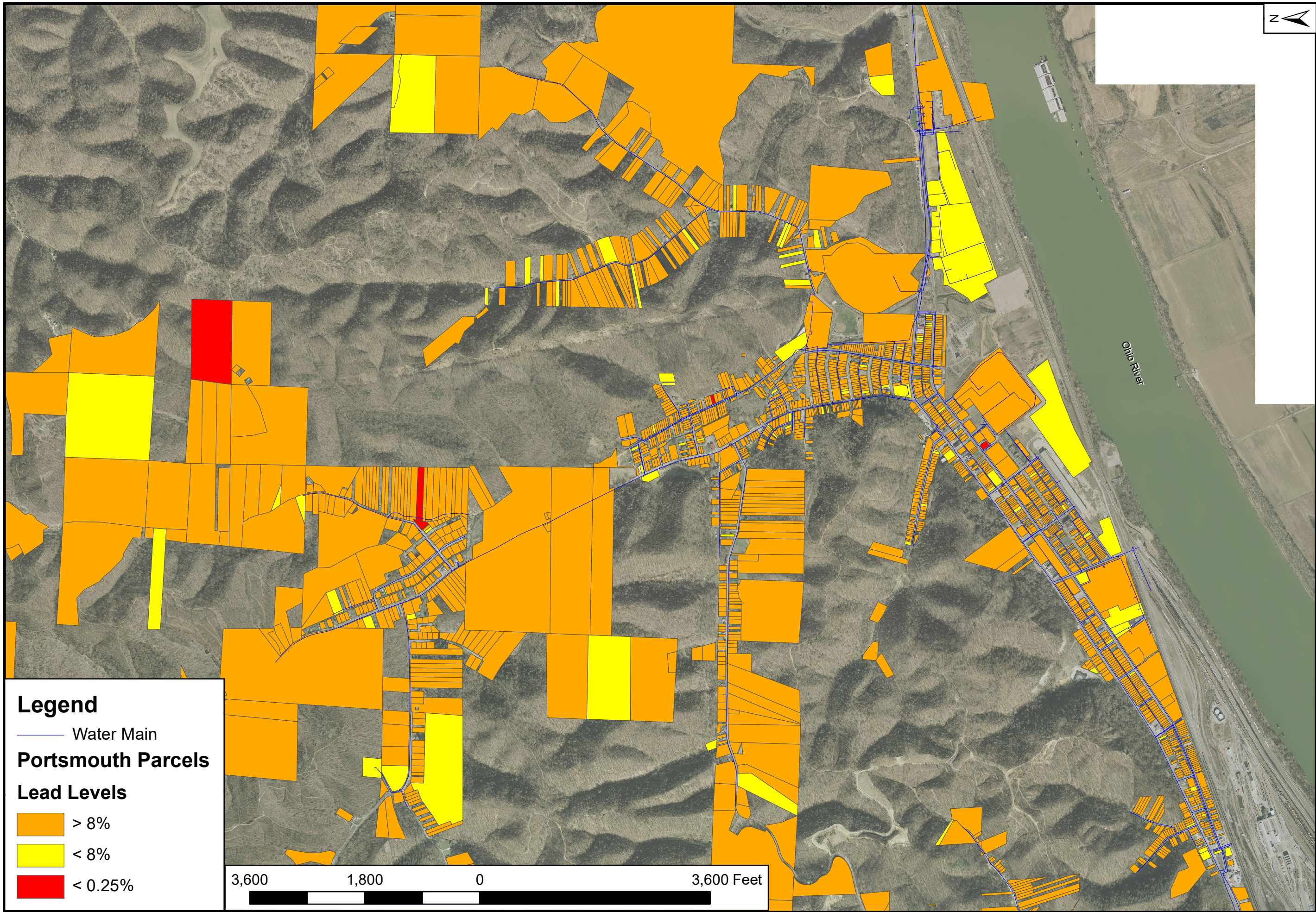
## OEPA POTENTIAL LEAD SERVICE MAPPING

PORTSMOUTH WATER SYSTEM  
CITY OF PORTSMOUTH  
SCIOTO COUNTY, OHIO



FIGURE 4  
3501.055





OEPA POTENTIAL LEAD SERVICE MAPPING

PORTSMOUTH WATER SYSTEM  
CITY OF PORTSMOUTH  
SCIOTO COUNTY, OHIO



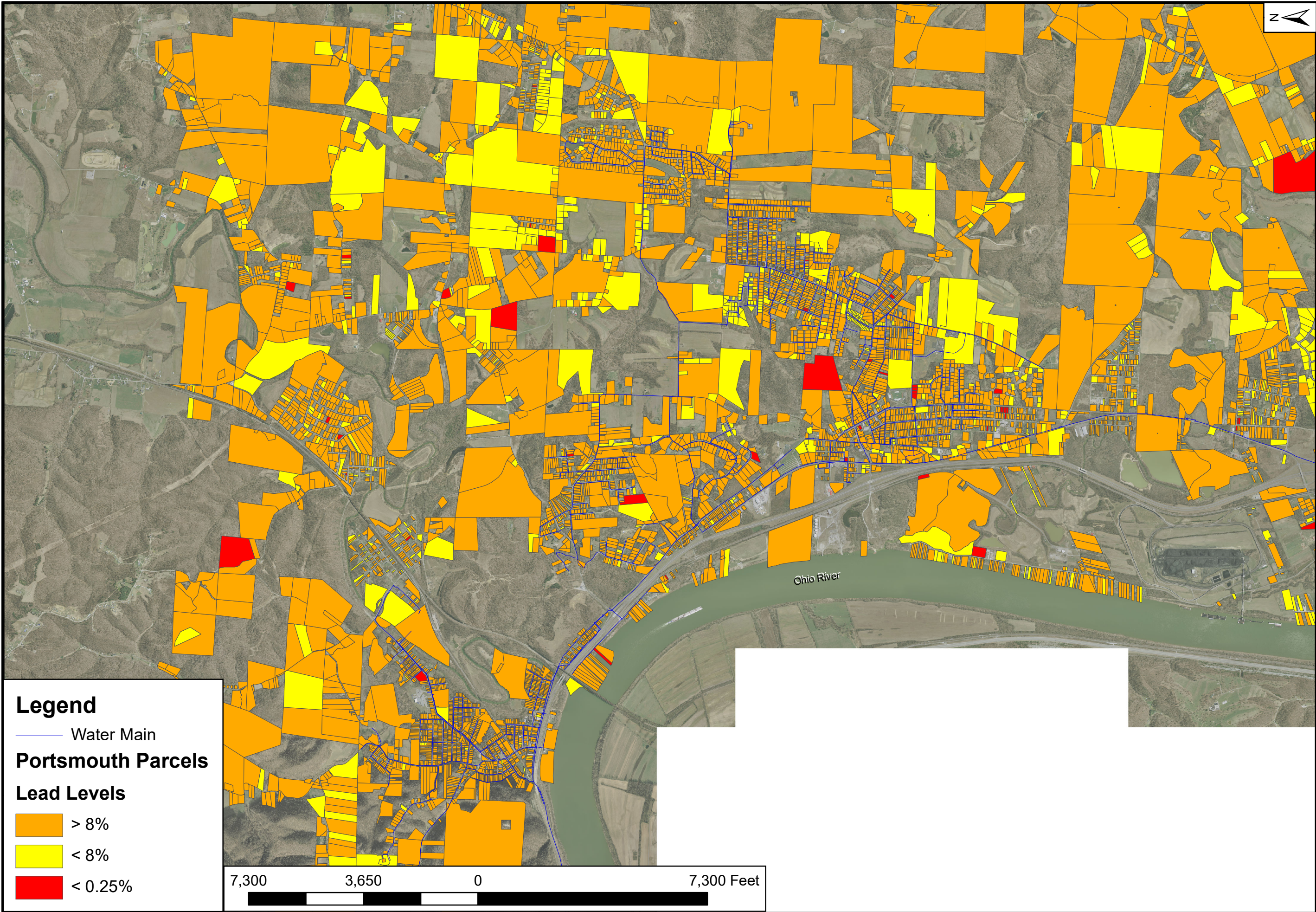
FIGURE 5  
3501.055

**Legend**  
— Water Main  
**Portsmouth Parcels**  
**Lead Levels**

- > 8%
- < 8%
- < 0.25%

3,600 1,800 0 3,600 Feet





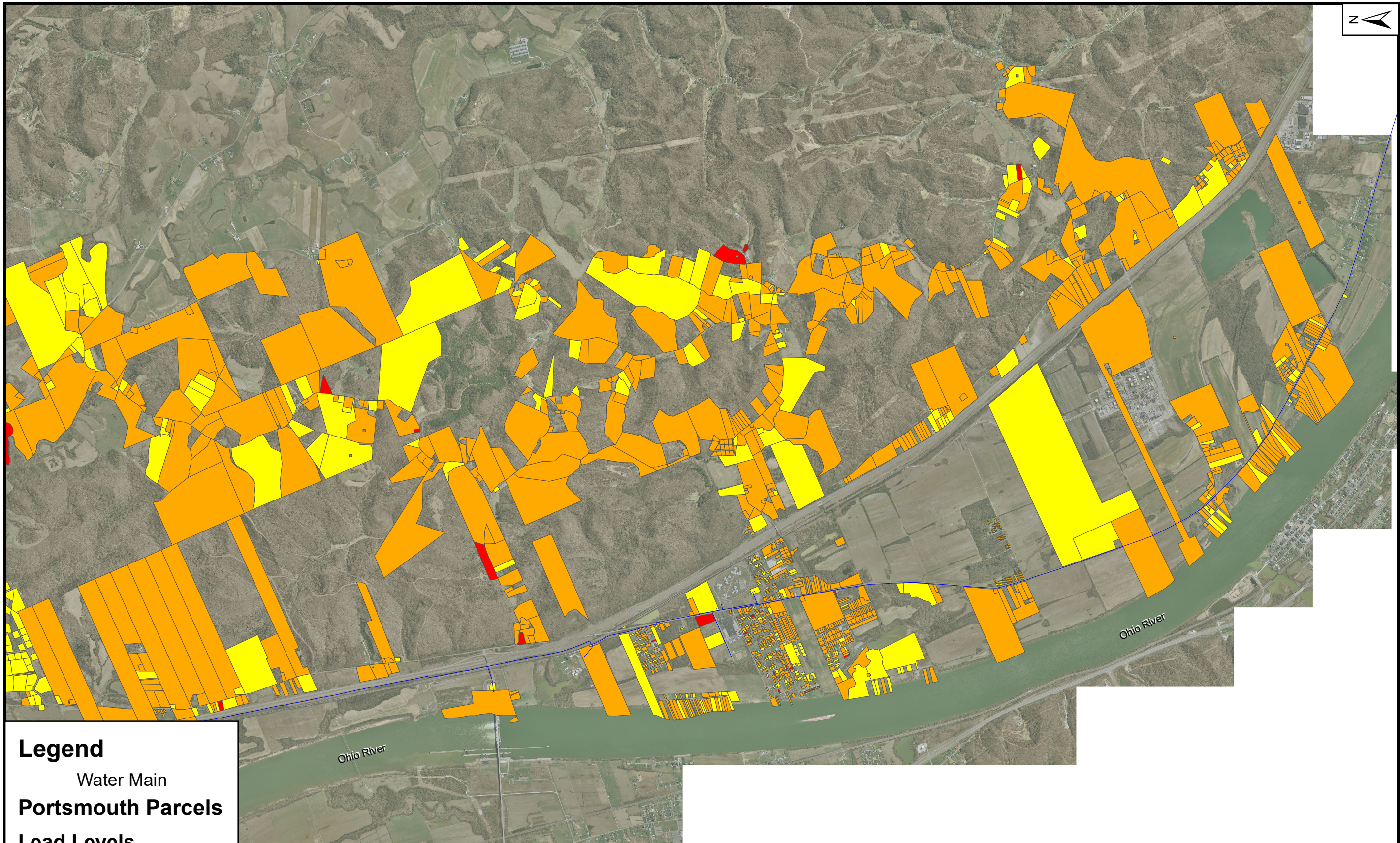
OEPA POTENTIAL LEAD SERVICE MAPPING

PORTSMOUTH WATER SYSTEM  
CITY OF PORTSMOUTH  
SCIOTO COUNTY, OHIO



FIGURE 6  
3501.055





## Legend

— Water Main

## Portsmouth Parcels

## Lead Levels

Orange > 8%

Yellow < 8%

Red < 0.25%

7,700 3,850 0 7,700 Feet

## OEPA POTENTIAL LEAD SERVICE MAPPING

PORTSMOUTH WATER SYSTEM  
CITY OF PORTSMOUTH  
SCIOTO COUNTY, OHIO



FIGURE 7  
3501.055