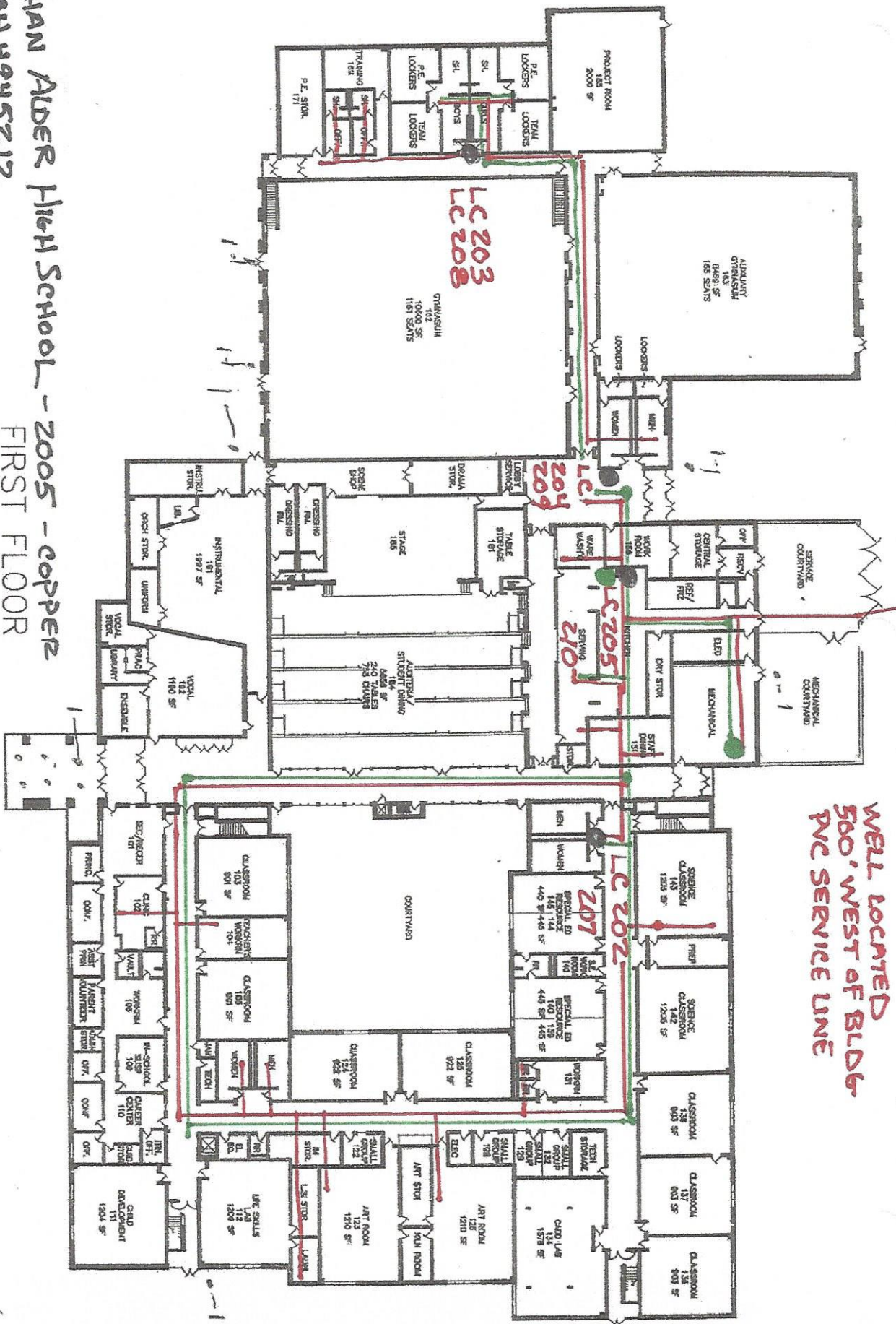


**WELL LOCATED
500' WEST OF BLDG
PVC SERVICE LINE**

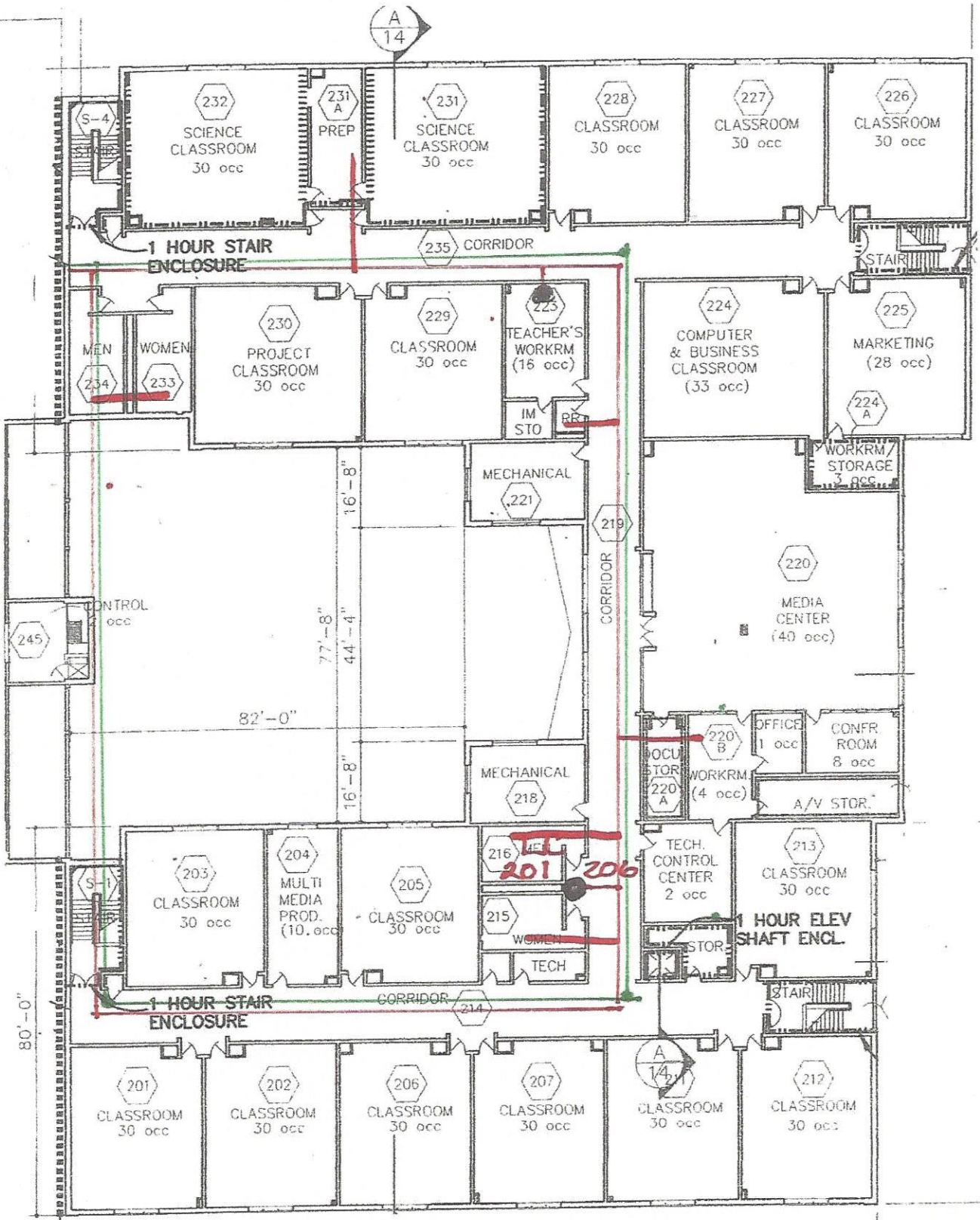


**JONATHAN ALDER HIGH SCHOOL - 2005 - COPPER
FIRST FLOOR**

**PWS OH 4945212
MADISON COUNTY
4200 ST RT 42
PLAIN CTRY, OH 43064
614-578-6203**

“Buildings in Ohio built prior to 1998 or that use plumbing material or solder manufactured before 1998 may have materials with greater than 8% lead and are at a higher risk of contributing lead to the drinking water than materials manufactured after 1998. In addition, buildings built and plumbing materials manufactured after 2014 were required to have less than 0.25% lead by weight and have the lowest risk for contributing lead to the drinking water. It should be noted however that, although prohibited, some use of leaded solder or leaded components may have occurred after the prohibitions became effective.”





JONATHAN ALDER HIGH SCHOOL - 2005
2ND FLOOR



8'-8" 22'-8" 177'-8"