



Madison County Sanitary Sewer & Water District

PO Box 623 / 825 US Rte 42 NE

London, Ohio 43140

Phone: 740-845-1702

Fax: 740-845-1703

March 6, 2017

OEPA Division of Drinking and Ground Waters
Central Office
P.O. Box 1049
Columbus, OH 43216-1049

To Ohio EPA

Back in 2001-2002 Madison County built a Madison County Engineer's Building and it has its own PWS ID #OH4946012. All the water lines are copper lines. In 2007 the County did install a new well. The original well is now used for non-potable water.

If you need anything else from Madison County for PWS ID#OH4946012 feel free to call Nathan Peters at 740-845-1702.

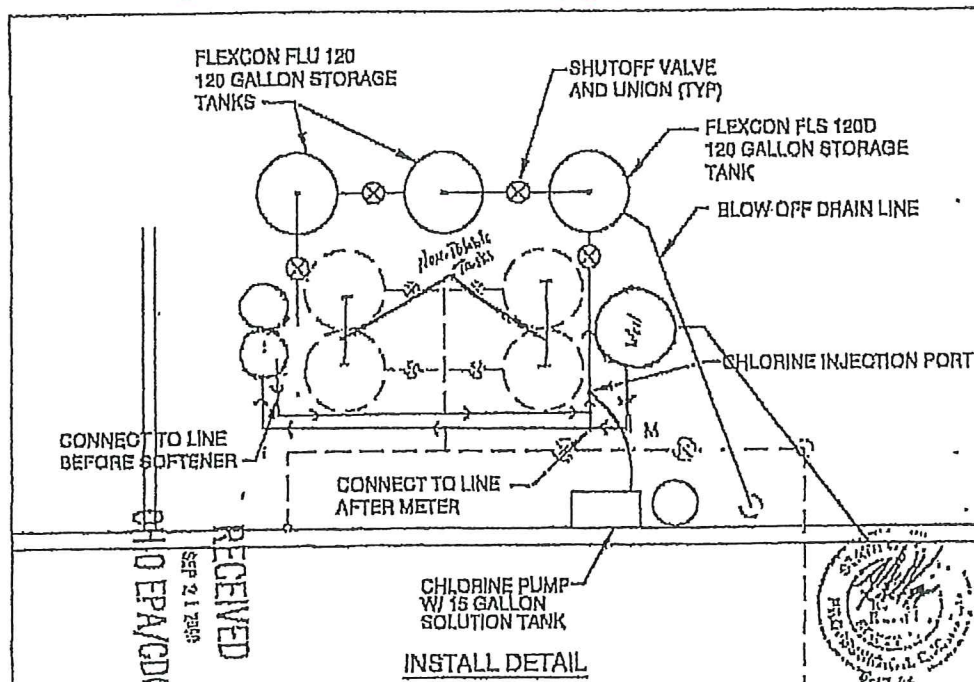
Thanks

Nathan Peters
Madison County SS&WD Admin. Assist/
Class A Operator

*Disclaimer**

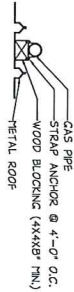
"Buildings in Ohio built prior to 1998 or that use plumbing material or solder manufactured before 1998 may have materials with greater than 8% lead and are at a higher risk of contributing lead to the drinking water than materials manufactured after 1998. In addition, buildings built and plumbing materials manufactured after 2014 were required to have less than 0.25% lead by weight and have the lowest risk for contributing lead to the drinking water. It should be noted however that, although prohibited, some use of leaded solder or leaded components may have occurred after the prohibitions became effective."

- Copper lines built between (1998-2014) actually built in 2001-2002.



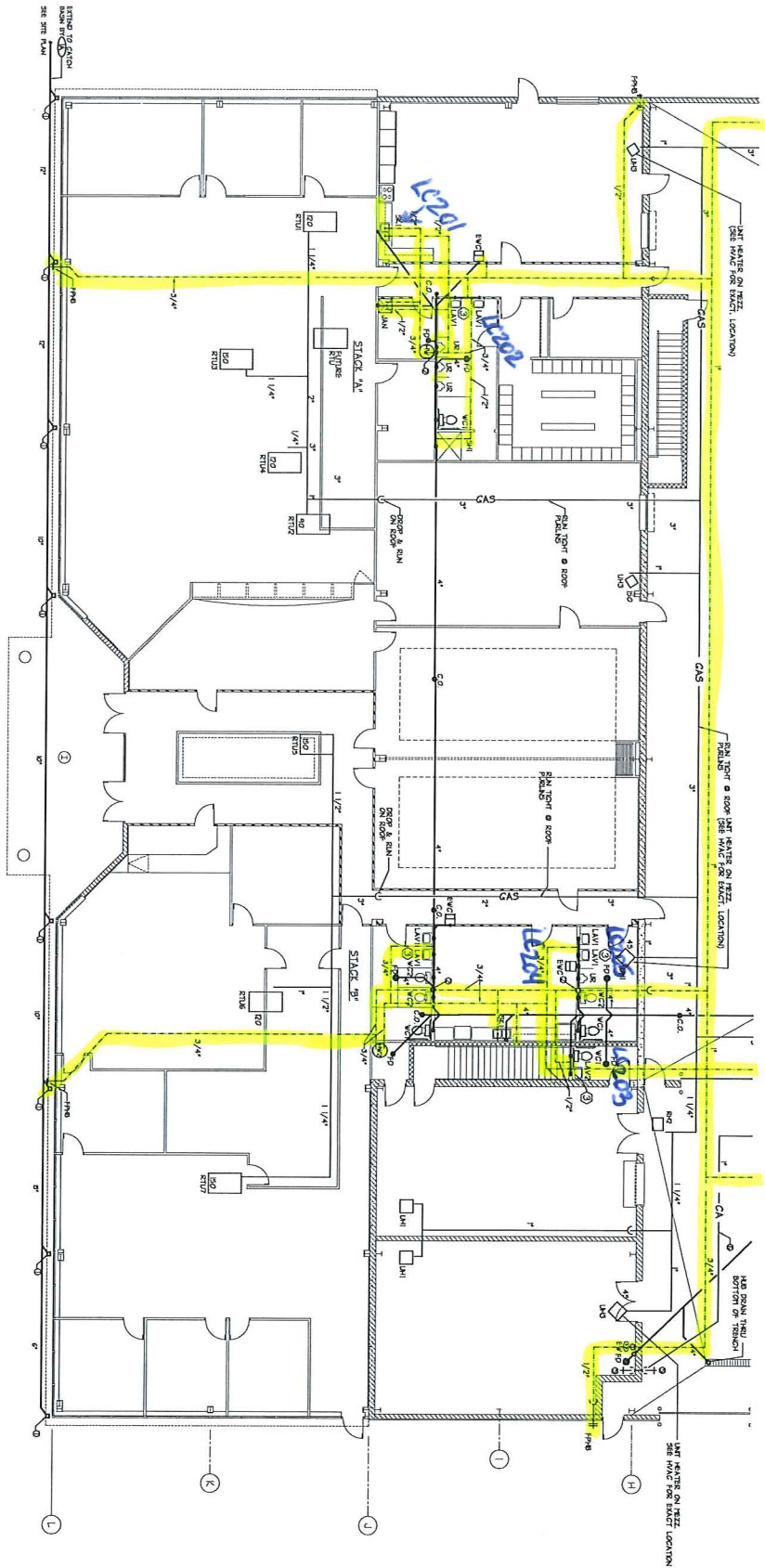
GAS PIPING ON ROOF

NTS



- CODED NOTES**
- ① - DOWNSPUT BY ② TO PROVIDE DOWNSPOUT BOOT & UNDERGROUND PIPING
 - ② - DROP 3/4" ON N. WALL & FEED ALL PLUMBING FIXTURES.
 - ③ - PROVIDE COLD WATER HOSE BIBB UNDER SINK.

PLUMBING FLOOR PLAN
1/8" = 1'-0"
ALL WORK SHOWN
BY ② UNLESS
NOTED OTHERWISE



P1

00000
6-26-01



JH Architects, Inc.

3968A Brown Park Drive
Hilliard, Ohio 43026
614-527-7590 Fax 614-527-7592

MADISON COUNTY ENGINEER
MAINTENANCE/OFFICE FACILITY
U.S. ROUTE 42
LONDON, OHIO

Bldg.

825 US Hwy 42 NE

PWS ID# OH4946012

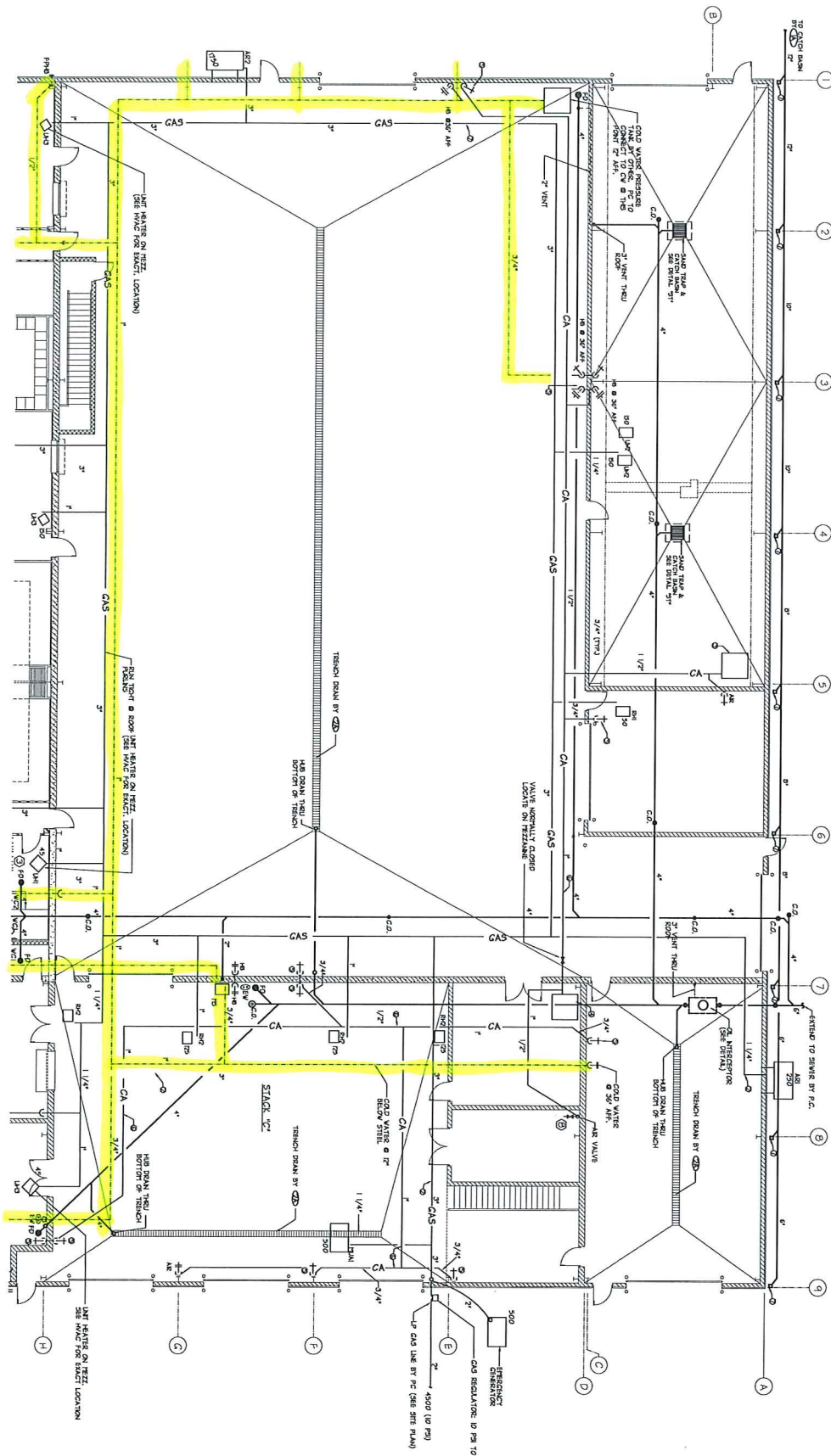
COORD. NOTES

- ① - CONNECT GAS TO UNIT HEATER ON TRENCH
- ② - GAS PIPING 8" BELOW MAIN FLOOR STEEL
- ③ - AIR COMPRESSOR HANDLING & INSTALLED BY OWNER. PC TO CONNECT AIR LINE TO COMPRESSOR.
- ④ - AIR COMPRESSOR ON TRENCH FORMER & INSTALLED BY OWNER. PC TO CONNECT AIR LINE TO COMPRESSOR.
- ⑤ - GASK DISCONNECT AIR OUTLET @ 4" X 4" WITH
- ⑥ - AIR PIPING 11" BELOW MAIN FLOOR STEEL

⑦ - DOWNPOUT BY RETAIL BUILDING SUPPLIER.
⑧ - 1" AIR DROP & VALVE FOR FUTURE CONNECTION.

PUMPING FLOOR PLAN

1/8" = 1'-0"
ALL WORK THIS SHEET
BY ALSO
NOTED OTHERWISE



P2

COORD.
6-14-01



JH Architects, Inc.

3968A Brown Park Drive
Hilliard, Ohio 43026
614-527-7590 Fax 614-527-7592

MADISON COUNTY ENGINEER
MAINTENANCE/OFFICE FACILITY
U.S. ROUTE 42
LONDON, OHIO

Bldg
825 US Hwy 42 NE

PWS ID# OH 4946012