

# Chem-Tech® Consultants, Inc.

Environmental Engineering & Safety Compliance



March 4, 2017

Ohio EPA  
Northeast District Office  
2110 East Aurora Road  
Twinsburg, Ohio 44087

RE: **Lead Mapping**

Enclosed is the lead map and sample site list for Kidron, Inc. in Wayne County. If you have any questions or concerns, please don't hesitate to call.

Sincerely,  
**Chem-Tech Consultants, Inc.**

Nathaniel D. Hoam  
EHS Compliance Officer

Entity: Kidron  
Doc Type: REPORT  
Doc Subtype: \_\_\_\_\_  
Program: \_\_\_\_\_  
County: Wayne  
Secondary ID: OH 8539912 - Kidron Well 1  
OH 8540012 - Kidron Well #2  
OH 8540112 - Kidron Well #3

RECEIVED

MAR 07 2017

OHIO EPA NEDO

eDOC -> 3 times



# PLANT LAYOUT

REVISED DATE: 12-6-99

KIDRON, INC.  
13442 HEMERSON ROAD  
KIDRON, OHIO 44636  
216-857-3011  
1-800-321-5421

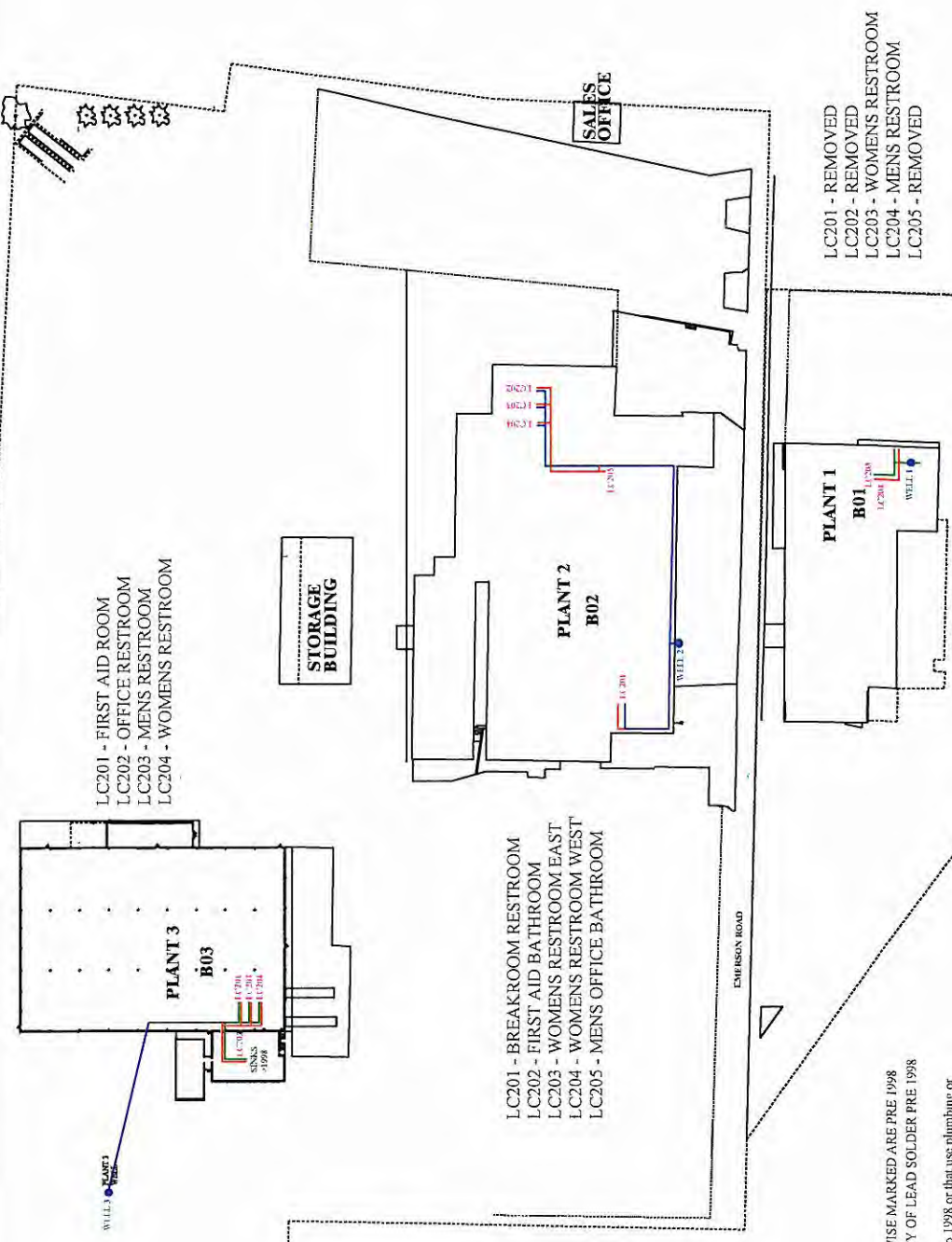
P0.2



RECEIVED

MAR 07 2017

OHIO EPA NEDO



LC201 - FIRST AID ROOM  
LC202 - OFFICE RESTROOM  
LC203 - MENS RESTROOM  
LC204 - WOMENS RESTROOM

STORAGE BUILDING

PLANT 2  
B02

PLANT 1  
B01

PLANT 3  
B03

LC201 - BREAKROOM RESTROOM  
LC202 - FIRST AID BATHROOM  
LC203 - WOMENS RESTROOM EAST  
LC204 - WOMENS RESTROOM WEST  
LC205 - MENS OFFICE BATHROOM

EMERSON ROAD

LC201 - REMOVED  
LC202 - REMOVED  
LC203 - WOMENS RESTROOM  
LC204 - MENS RESTROOM  
LC205 - REMOVED

ALL FIXTURES UNLESS OTHERWISE MARKED ARE PRE 1998  
COPPER LINES HAVE POSSIBILITY OF LEAD SOLDER PRE 1998

Buildings in Ohio built prior to 1998 or that use plumbing or solder manufactured before 1998 may have materials with greater than 8% lead and are at a higher risk of contributing lead to the drinking water than materials manufactured after 1998. In addition, buildings built and plumbing materials manufactured after 2014 were required to have less than 0.25% lead by weight and have the lowest risk for contributing lead to the drinking water. It should be noted however that, although prohibited, some use of leaded solder or leader components may have occurred after the prohibition became effective.

- COPPER (COLD) LINE POSSIBLE LEAD SOLDER
- PVC/POLY (COLD) LINE NO LEAD SOLDER
- COPPER (HOT) LINE POSSIBLE LEAD SOLDER

Well 1: PWS OH8539912

Well 2: PWS OH8540012

Well 3: PWS OH8540112