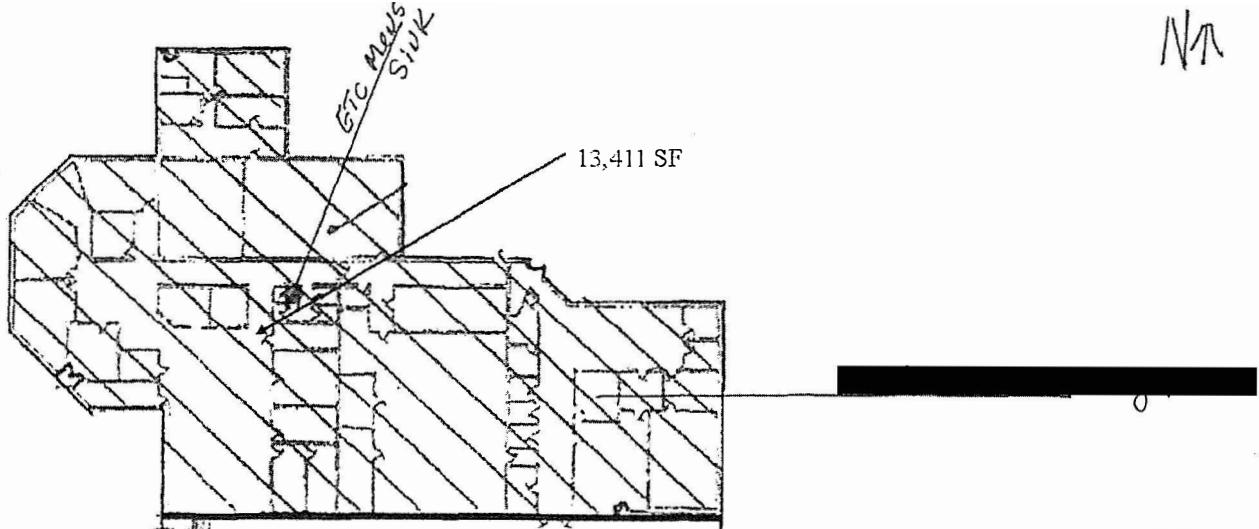


NA



13,411 SF

ETC MANS SINK

Approx 3,500 SF

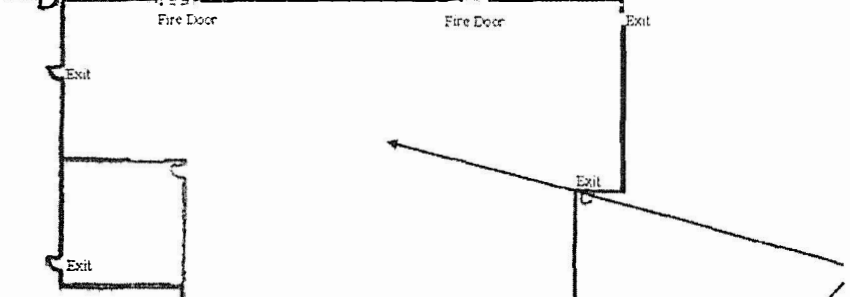
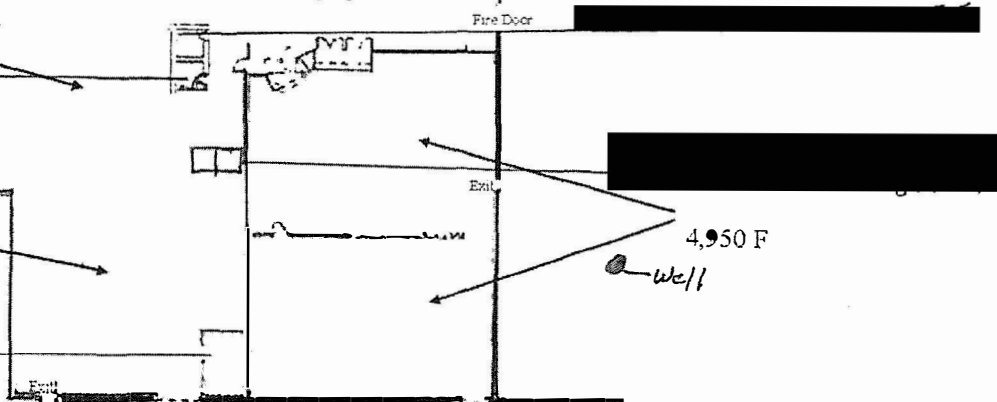
Womens R.R.

Approx 3,500 SF

Single Loading Dock
Well Room.

4,950 F

Well



12,930 SF

Double Loading Dock

PWS ID ● H7787812
Lic. # 778712-113630-2017

Field Office

EASTERN Rd.

Space Note 21