



Village of Sebring, Ohio

Public Water System Lead (Pb) Components

PWSID# OH5001911

Prepared February 2017

To comply with Section 6109.21 of the Ohio Revised Code, enacted in September 2016, the Village of Sebring in Mahoning County, Ohio has created the following report and attached map to identify known and potential components of water service lines that contain lead (Pb).

The following information and attached map do not verify the presence of lead in any of the plumbing components or structures shown. The information and map only show the probable or possible locations based on the year that structures were built, main line material, or by the year the plumbing component was installed.

RCAP staff and the Village of Sebring Water Department met on February 9 , 2017 to review a map of the service area. No applicable historical maintenance and operation records, tap cards, or as-builts are available to help identify lead component locations. Locations where lead service components have been identified and locations where lead components are likely still being used were identified by the Village of Sebring Water Department and recorded in a GIS database.

The attached maps depict parcels served by the public water system, possible locations that may contain lead materials, and structures at risk of having lead solder and flux in their plumbing based on their construction date. The Village of Sebring does not own any service lines other than their own municipal buildings, parks system and fire stations. The Village has discovered some lead service lines, which are identified within the map, and they identified areas where there is a high probability areas for lead service lines based on the age of the water mains and buildings. Also identified within the map, are confirmed copper services lines identified within the high probability areas. Within these high probability areas, the water mains are scheduled to be replaced on the following streets; South 14th (in progress), West Maryland, West Indiana, East and West Oregon, and East Michigan.

Ownership of Service Lines and Lead Probability

The Village of Sebring has 3719 parcels and serves approximately 2,046 customers within the city boundaries. The Village does not own or maintain any portion of the service lines.

The table below provides information about the possibility of lead service lines within the Village of Sebring.

Private Service Line Lead Probability		
Possibility of Lead	Private #	% of System
No Lead	1467	71.7%
High Probability	579	28.3%

Distribution System

The Village of Sebring has approximately 41.2 miles of water main lines. The oldest sections of the water system were constructed in the early 1900's. Within the distribution system, none of the pipes themselves are known to contain any lead. However, the older water mains may have joints, valves, and fittings within the system that contain lead.

In 1981, the Village adopted formal rules stating that lead was no longer a suitable material to be used within the water system. Structures that were built after 1981 are identified on the map and do not have a lead service line. Meters installed after 2014 will have less than 0.25% lead.

In Sebring, a chemical (orthophosphate) is fed to coat the lines to help prevent corrosion and leaching of lead into the water.

Indoor Plumbing

Buildings in Ohio built prior to 1998 or that use plumbing material or solder manufactured before 1998 may have materials with greater than 8% lead and are at a higher risk of contributing lead to the drinking water than materials manufactured after 1998.

Buildings built and plumbing materials manufactured after 2014 were required to have less than 0.25% lead by weight and have the lowest risk for contributing lead to the drinking water. It should be noted however that, although prohibited, some use of leaded solder or leaded components may have occurred after the prohibitions became effective.

Customer Self-Reporting

The information on this map regarding privately owned service lines is based on the limited information available from the water system staff, and Mahoning County and Columbiana County building and parcel data. Property owners are encouraged to inspect their own service lines entering the building if these are in anyway exposed. Please contact the Village of Sebring Water Department or Sebring Village Hall by calling 330-938-6144, or email water@sebringohio.net. The map and dataset will be updated within 5 years.

Contacts and Resources

If you have questions about known and potential lead components within the Village of Sebring Water Department or Village Hall, please contact:

Village of Sebring
135 E Ohio Ave
Sebring, Ohio 44672

330-938-6144

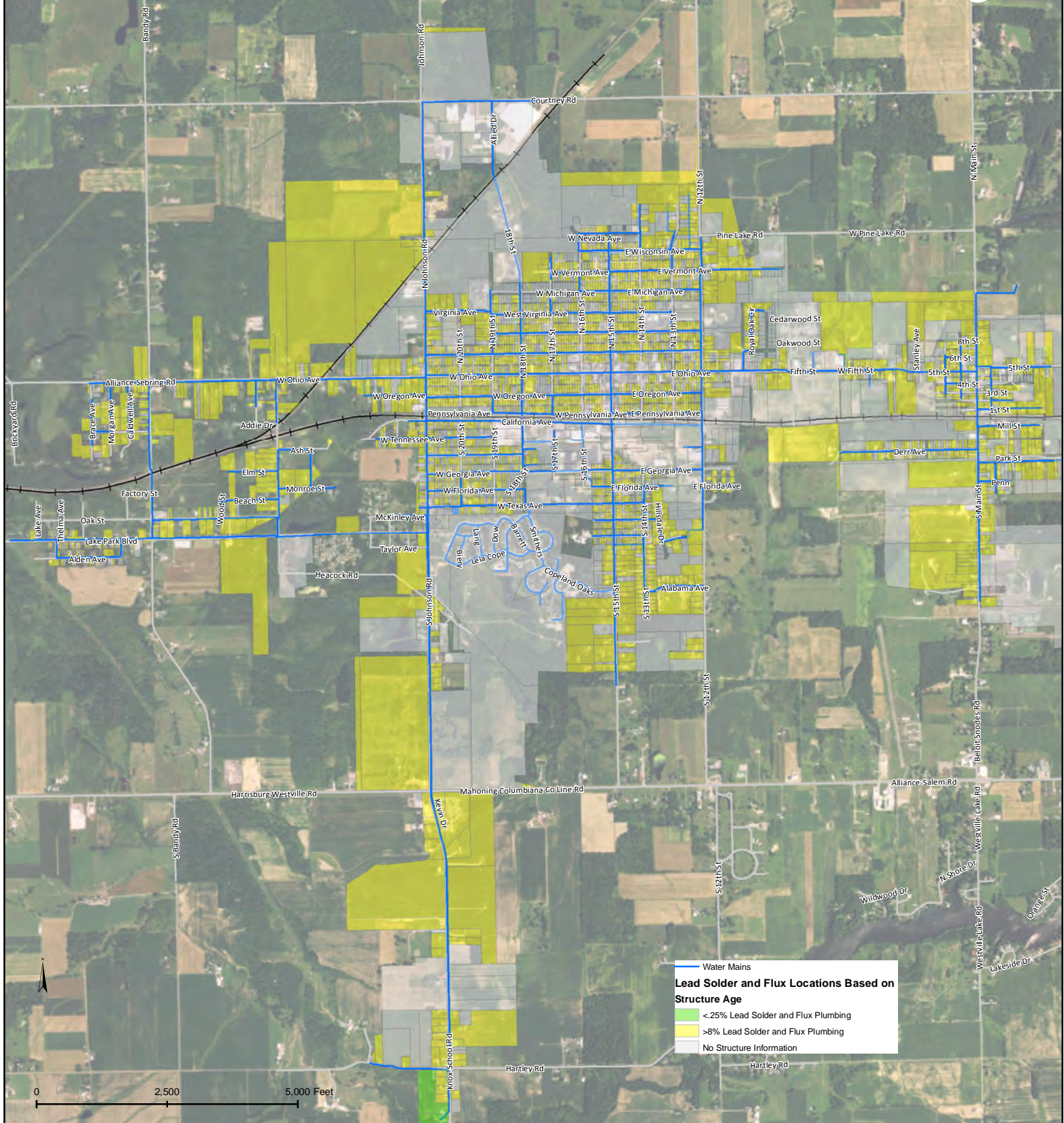
water@sebringohio.net

For more information about lead service lines and their removal, we recommend the following resources:

- **The Lead Service Line Replacement Collaborative**
<http://www.lslr-collaborative.org/resources-for-concerned-consumers.html>
- **Ohio EPA 'Learn About Lead' page**
<http://epa.ohio.gov/pic/lead.aspx>
- **US EPA Lead in Drinking Water Information Page**
<https://www.epa.gov/ground-water-and-drinking-water/basic-information-about-lead-drinking-water>

Village of Sebring PWS OH5001911

Lead Solder and Flux Locations Based on Structure Age

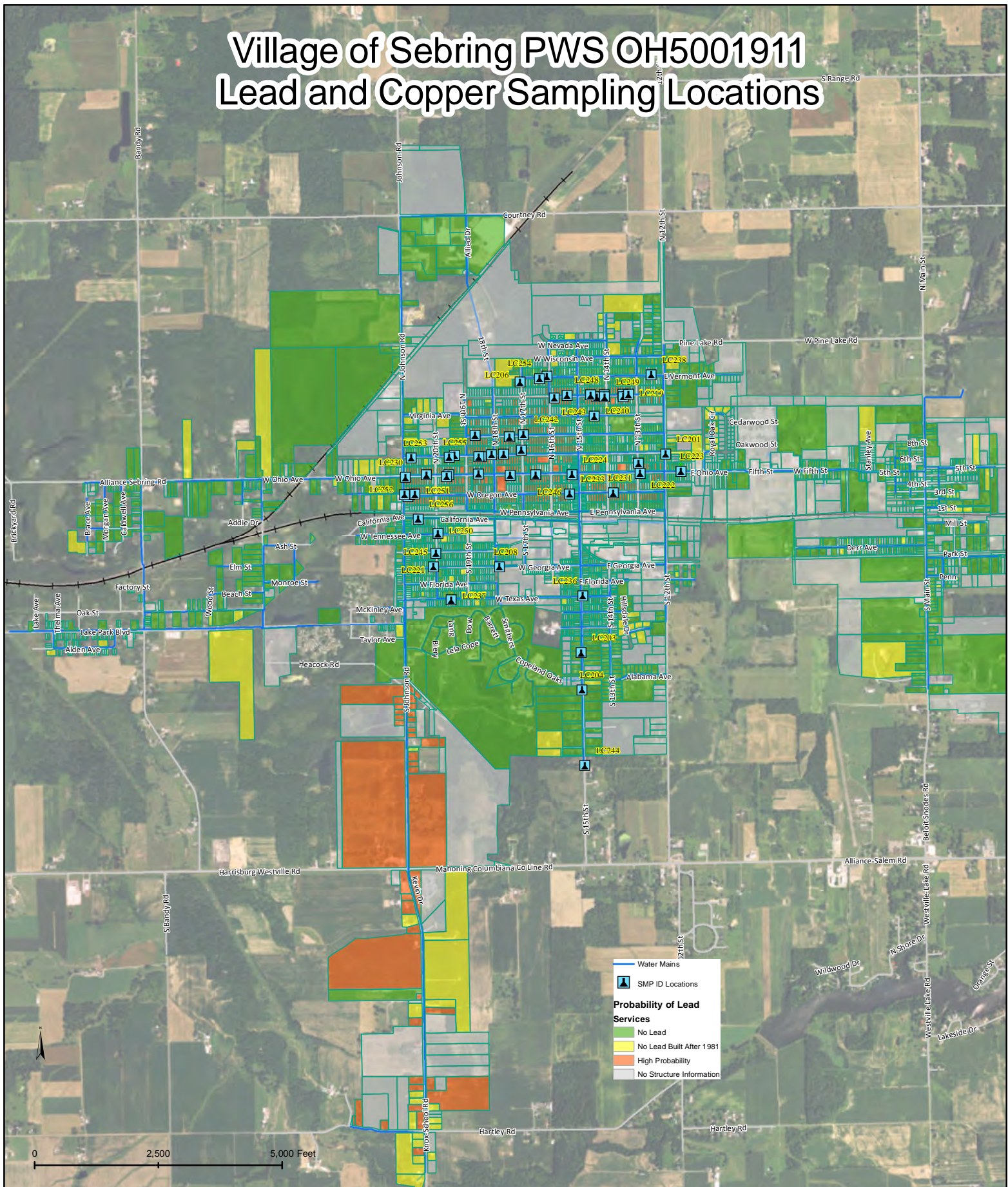


This map does not verify the presence of lead in any of the lines or structures shown. This map only shows the probable or possible locations based on the year that the structure was built, historical maintenance and operation records, and customer or utility staff verification. This map is not intended for design engineering, surveying, or construction purposes. Information and data contained or accessed within this map emanates from various public and private sources and may contain errors and omissions. This map remains under development and is subject to change with or without notice. All data, information and documentation within this map are provided "as is" without warranty of any kind, either expressed or implied. The suitability of the data and information contained in this map is not guaranteed, and the user assumes all risk for such uses. WSOS, Community Action and its employees, affiliates, agents and licensors cannot and do not warrant the accuracy, completeness, non-infringement, merchantability or fitness of any information contained within this map. Sources: OGRIP, Mahoning and Columbiana County Auditor, RCAP GIS. Datum/Projection: NAD 1983 Ohio State Plane North (ft) Date: 7/7/2011

USDA, USGS, AeroGRID, IGN, and the GIS User Community

Village of Sebring PWS OH5001911

Lead and Copper Sampling Locations

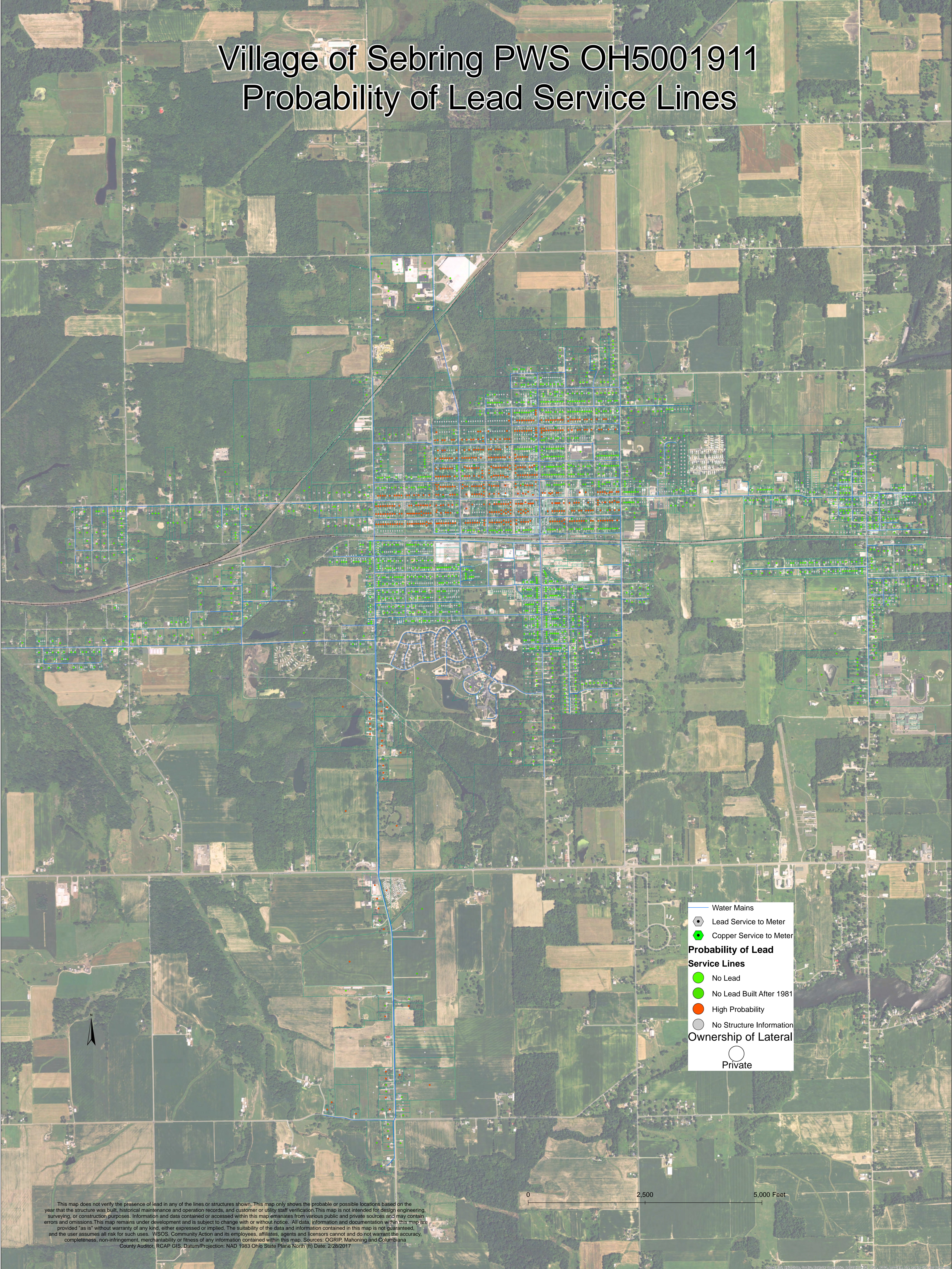


This map does not verify the presence of lead in any of the lines or structures shown. This map only shows the probable or possible locations based on the year that the structure was built, historical maintenance and operation records, and customer or utility staff verification. This map is not intended for design engineering, surveying, or construction purposes. Information and data contained or accessed within this map emanates from various public and private sources and may contain errors and omissions. This map remains under development and is subject to change with or without notice. All data, information and documentation within this map are provided "as is" without warranty of any kind, either expressed or implied. The suitability of the data and information contained in this map is not guaranteed, and the user assumes all risk for such uses. WSOS, Community Action and its employees, affiliates, agents and licensors cannot and do not warrant the accuracy, completeness, non-infringement, merchantability or fitness of any information contained within this map. Sources: OGRIP, Mahoning and Columbiana County Auditor, RCAP GIS. Datum/Projection: NAD 1983 Ohio State Plane North (ft) Date: 7/7/2011

USDA, USGS, AeroGRID, IGN, and the GIS User Community

Village of Sebring PWS OH5001911

Probability of Lead Service Lines



This map does not verify the presence of lead in any of the lines or structures shown. This map only shows the probable or possible locations based on the year that the structure was built, historical maintenance and operation records, and customer or utility staff verification. This map is not intended for design engineering, surveying, or construction purposes. Information and data contained or accessed within this map emanates from various public and private sources and may contain errors and omissions. This map remains under development and is subject to change with or without notice. All data, information and documentation within this map are provided "as is" without warranty of any kind, either expressed or implied. The suitability of the data and information contained in this map is not guaranteed, and the user assumes all risk for such uses. WSOs, Community Action and its employees, affiliates, agents and licensors cannot and do not warrant the accuracy, completeness, non-infringement, merchantability or fitness of any information contained within this map. Sources: OGRIP, Mahoning and Columbiana County Auditor, RCAP GIS. Datum/Projection: NAD 1983 Ohio State Plane North (ft) Date: 2/28/2017