

RECEIVED

MAR 08 2017

OHIO EPA NEDO

Entity: Hubron Town + Co. Inc
 Doc Type: Report
 Doc Subtype: _____
 Program: DDAW
 County: Wayne
 Secondary ID: 0433405

EXISTING UNEXCAV.

EXIST. CONCRETE

CHIMNEY

GUT THRU. OPENING
SET LIMITS

E 01

EXIST

4'-0" WIDE
2 (4x3 1/2 x 5/8) L'S

8x16 SOLID
MASONRY

E 02

UP
EXISTING

03

REMOVE WALL
PATCHING & FL.

LC201

EXIST. KITCHEN

3 compartment
Sink

E 04
4'-0" x 28" ROLLING SLAT
ALUMINUM

EXIST

2 compartment
Sink
Dishwasher

EXIST

Under
Counter
3 compartment
Sink

LC205

EXIS.
NUT

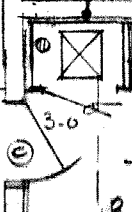
DUCT FUR IN
W/ DRY WALL

E 05

UP

LUNCH COUNTER

GUT M

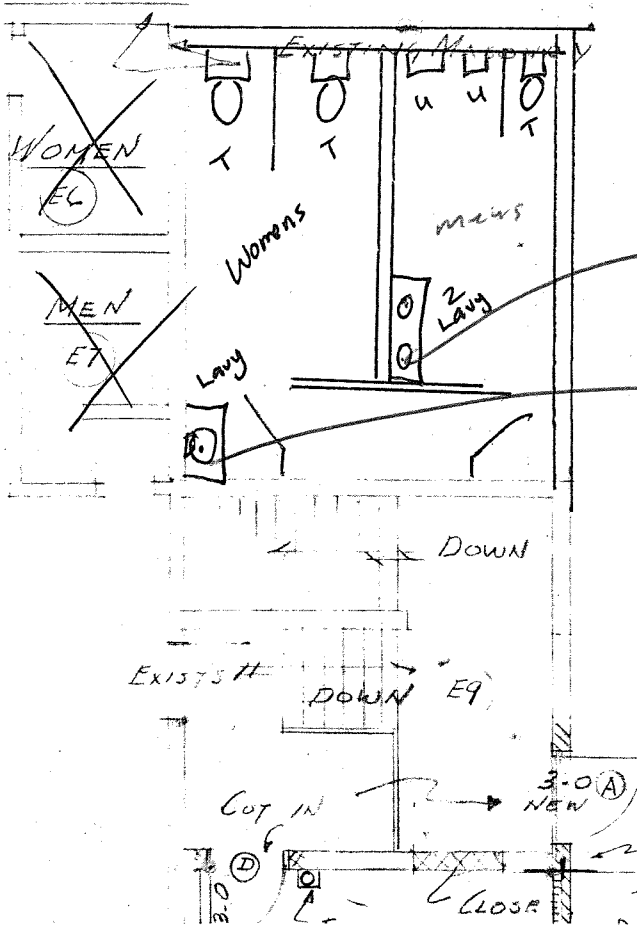


RECEIVED

MAR 08 2017

OHIO EXPANDED

OCK



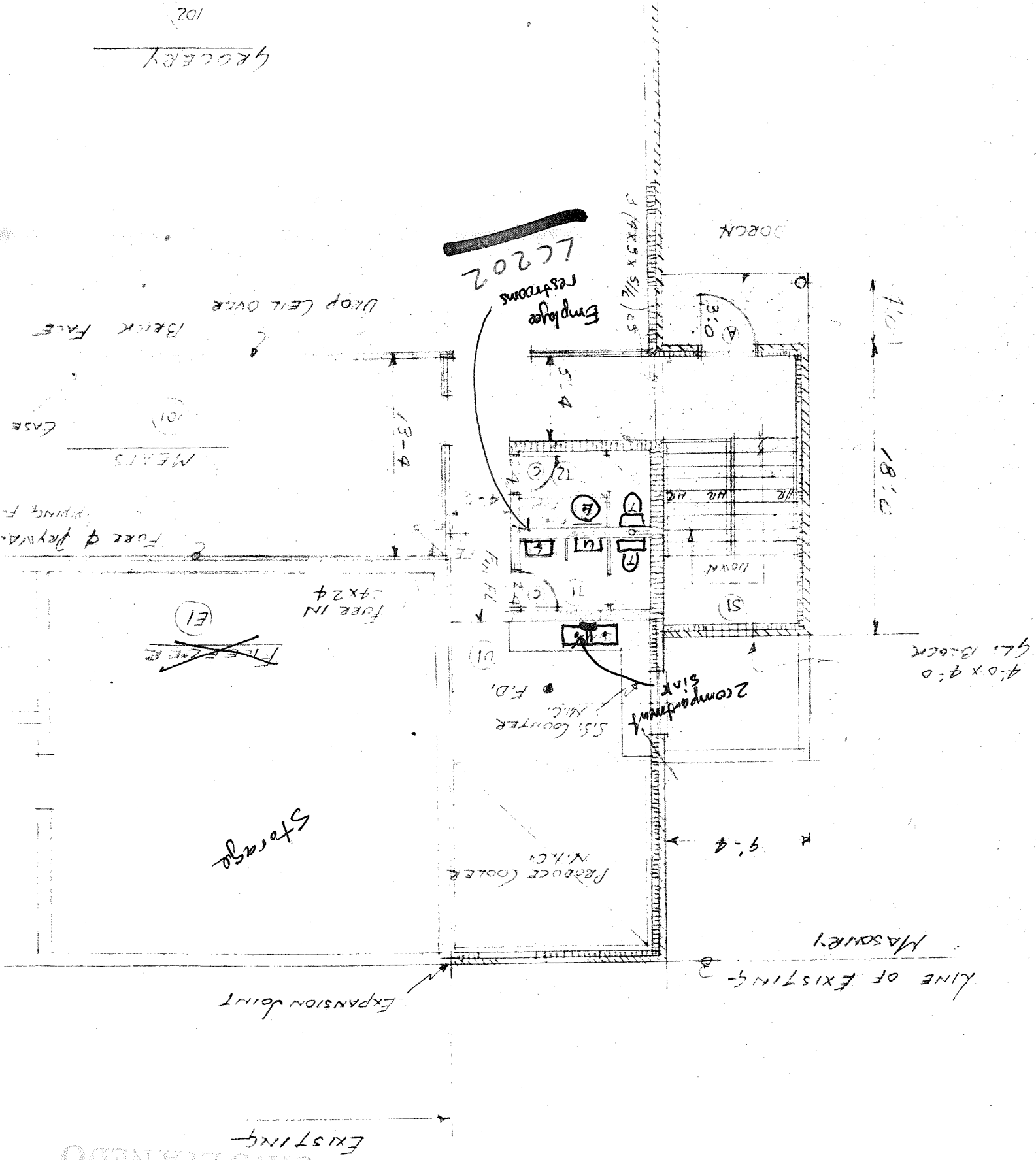
LC203

LC204

EXISTING

EXPANSION JOINT

GROCERY



RECEIVED

MAK OR 2017

OHIO SPANEDO

EXISTING

EXPANSION JOINT

LINE OF EXISTING

MASONRY

9'-4"

PRODUCT COOLER
N.I.C.

Storage

~~FREEZER~~
E1

FREE IN
24x24

Force of playwa.
piping F.

MEATS

CASE

BANK FACE

DROP CEILING OVER

Employee restrooms
LC202

3' 1/2" 19x19 SILL

DOWN

18'-0"

4'-0" x 4'-0"
GL. BLOCK

2 compartment sink
S.S. counter
N.I.C.
F.D.

DOWN

HR HR HR

3'-0"

5'-4"

Employee restrooms

13'-4"

101