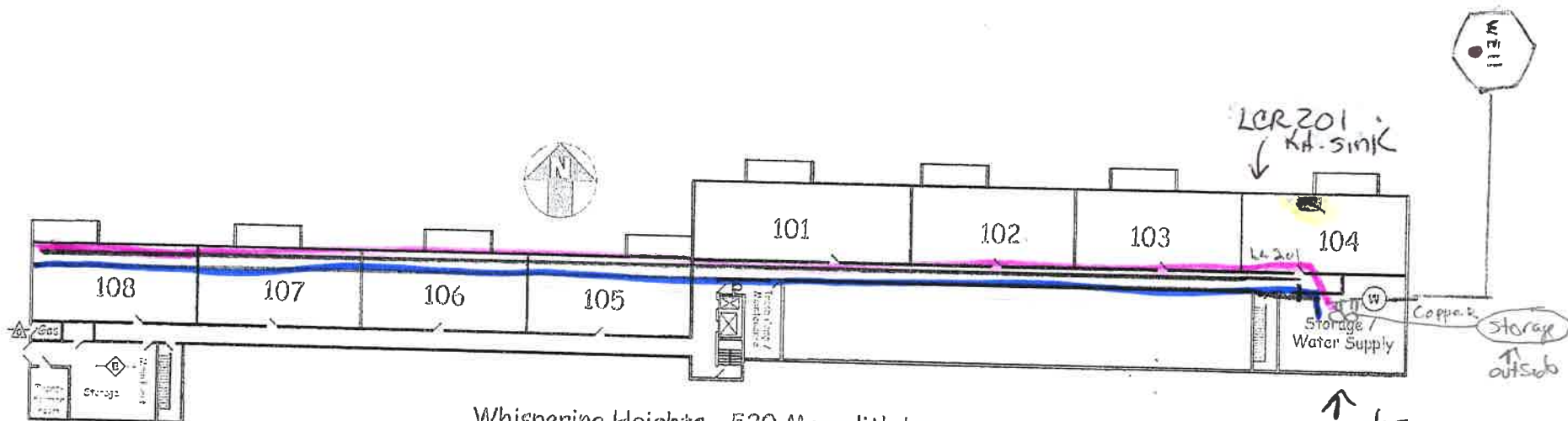


North

Meredith Lane



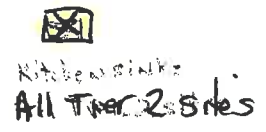
Whispering Heights - 520 Meredith Lane
 1st floor (two levels below main entrance grade)
 Built 1972 - All copper service lines.
 PWS ID. #7706012 330-923-7361

↑ water treatment area -
 2 softeners w/ chlorination
 - undegrad. storage -
 all lines
 copper in water treatment.

LCR Sampling sites:

- LCR 201 - Condo 104 Kitchen sink
- LCR 202 - Condo 416 Kit. sink
- LCR 203 - Condo 202 Kit. sink
- LCR-204 - Condo 310 Kit. sink
- LCR-205 - Social rm - Kit. sink
- LCR-206 - Condo 308 (extra site)

ALL MAINS copper + laterals leading into condos copper

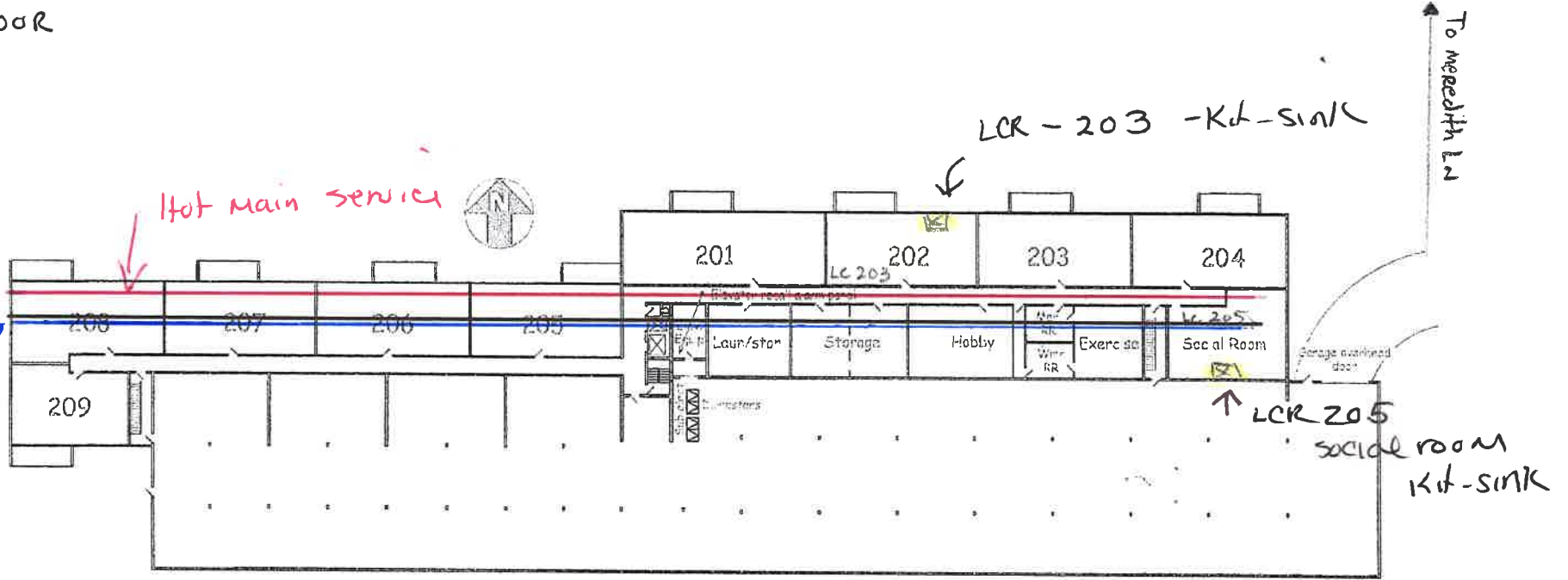


ALL TAPS + faucets we are assuming are 1988 + prior
 Bldg. built 1972. ALL copper service lines

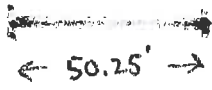
North

Meredith Lane

2nd floor



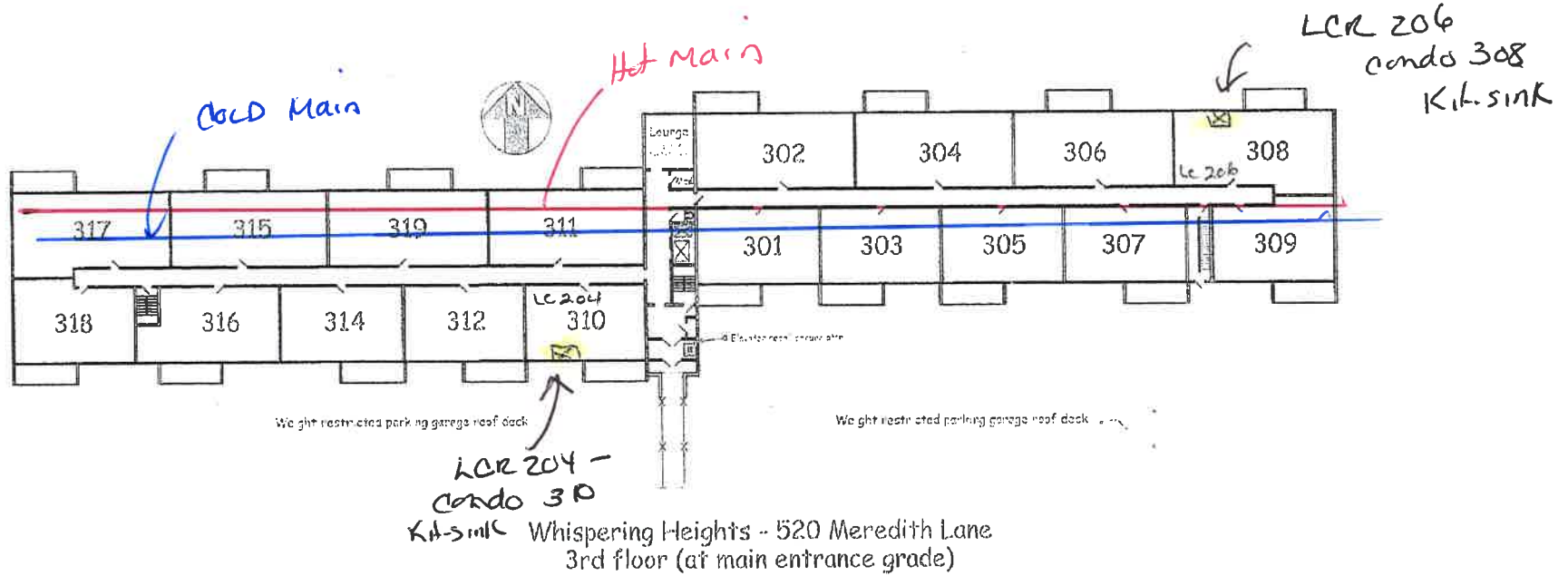
Whispering Heights - 520 Meredith Lane
2nd floor (one level below main entrance grade)



North

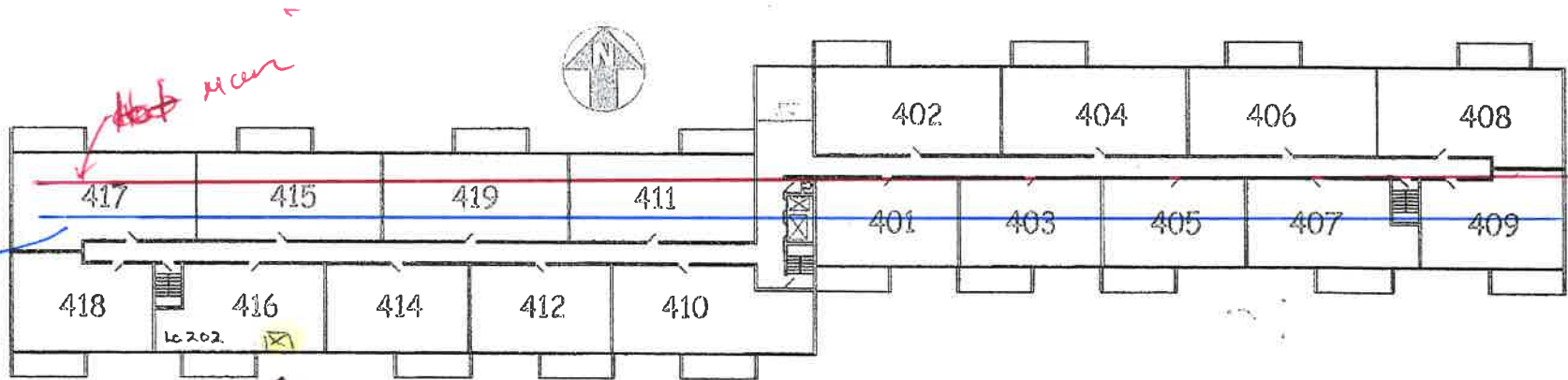
Meredith Lane

3rd
floor



North

Meredith Lane

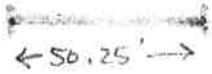


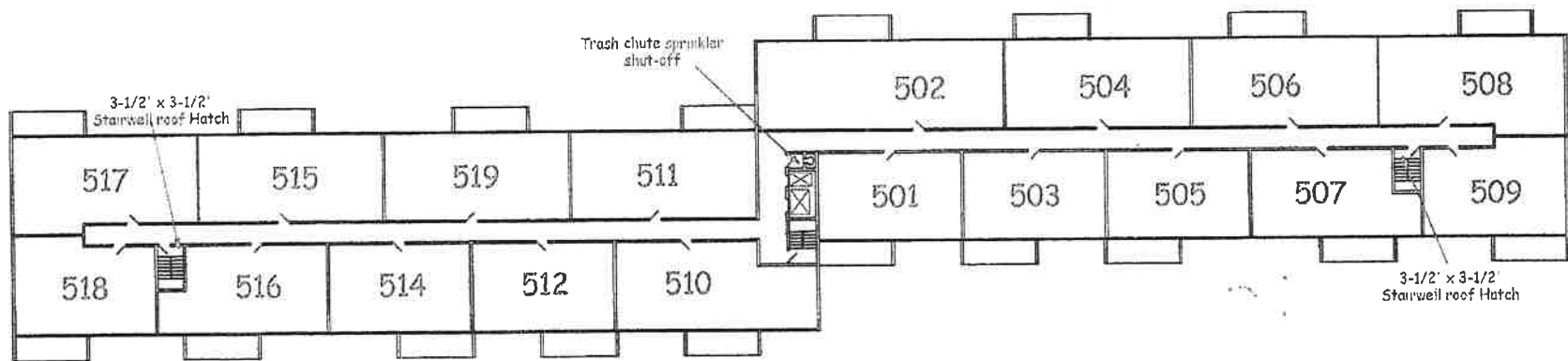
cold

Hot water

LCR 202
Condo 416
Kit-sink

Whispering Heights - 520 Meredith Lane
4th floor (one level above main entrance grade)





Whispering Heights - 520 Meredith Lane
5th floor (two levels above main entrance grade)

