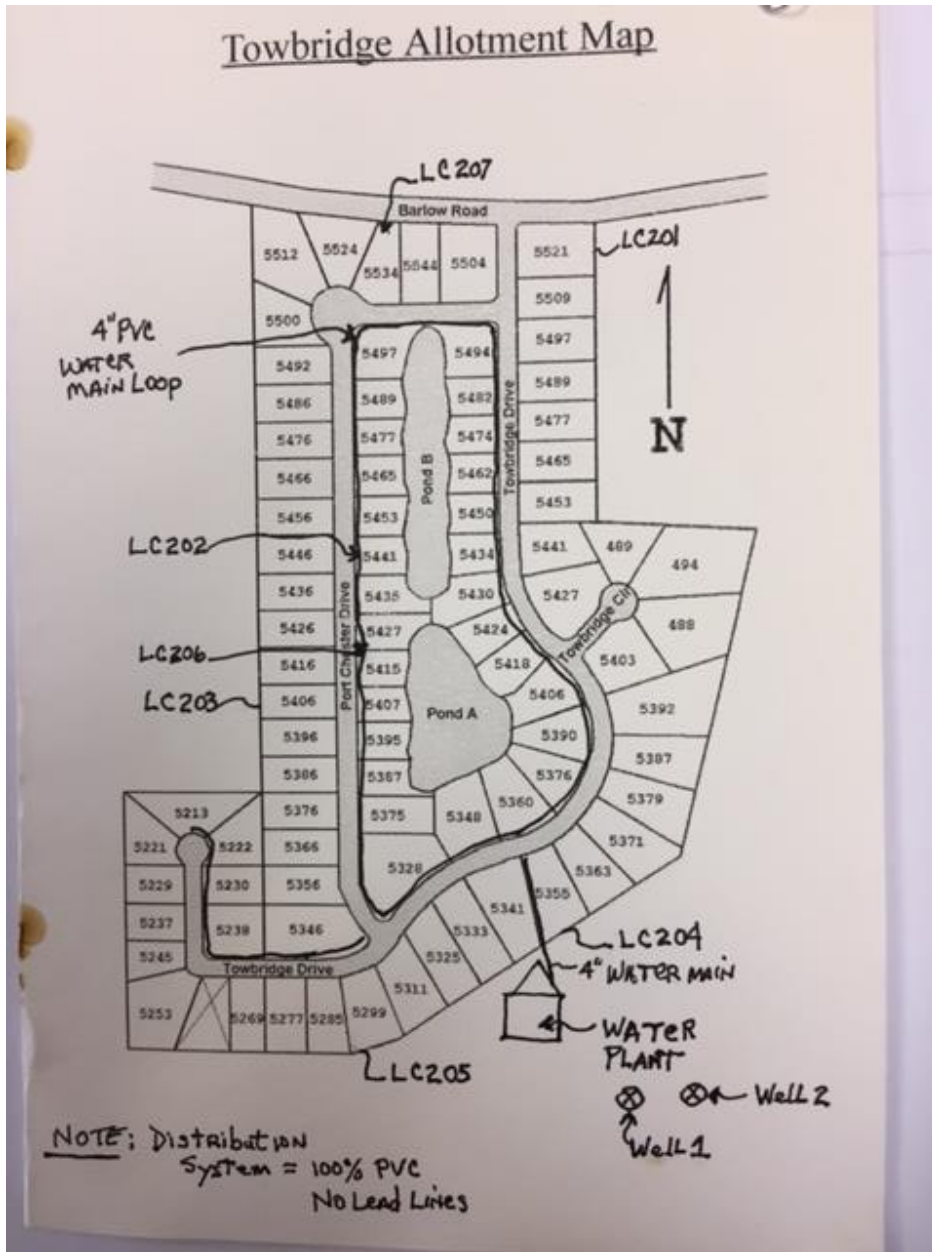


Towbridge Development
Lead Mapping

PWS: OH7780112



**Towbridge Development
Community Water Supply System**

PWS ID: OH7708112

Lead Mapping Narrative:

Water Plant: The Towbridge Water Plant and Distribution system was constructed December, 1988. The plant services 87 residential homes. Home construction began in December 1988 and was completed in the spring of 1993. All (100%) of the water lines and piping installed in the water plant, conveyance lines from the wells to the treatment plant, and the Distribution lines from the treatment plant to each residential home consist of schedule 80 PVC material. No lead lines have been installed.

Distribution System: A 4 inch PVC water main forms a water line "loop" which is depicted on the enclosed Lead mapping diagram. Lateral lines which consist of 1.5 inch diameter copper lines extend from each individual home and are connected to the 4 inch water main. The copper Lines are connected to the main PVC line by use of a steel saddle valve. The above described information has been verified via water line repairs made in 2006 and in 2016. Characteristics of the water Distribution system and plant piping have also been corroborated by the original water plant maintenance contractor, Valley Well & Pump.

Residential Plumbing: Lead solder is limited to interior plumbing within each home and faucet materials and fixtures were all installed after 1988.

If any additional information is required, please contact:

P. David Gura

Water Plant Manager

Towbridge Homeowners Assoc.

216. 407.7193.