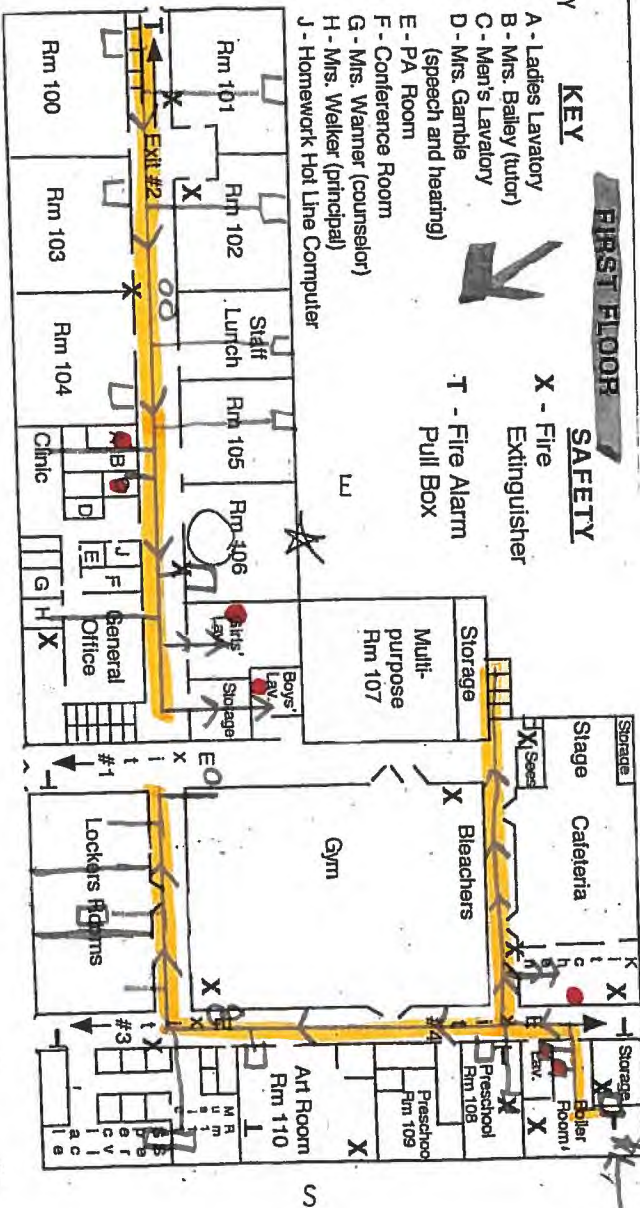


Walker Elementary School

This building is supplied by a new well that was drilled in 2008. When it was drilled there were three storage tanks added along with a chlorinator. Drinking Fountains in this building were replaced in 2014. Most of the plumbing in the building is the original. Copper piping and brass fixtures.

Walker - 1st

WALKER ELEMENTARY
 3525 Sandy SE
 Canton OH 44707



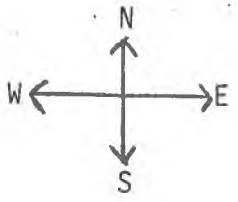
KEY
SAFETY
 X - Fire Extinguisher
 T - Fire Alarm Pull Box

Well Head

Water Tanks

Entry Point

Parking Lot



H R WALKER ELEMENTARY - 1st flr
 IRN 061804
 3525 Sandy Ave SE
 Canton OH 44707

CANTON LOCAL SCHOOL DISTRICT
 IRN 049833

330-484-8020

Built 1961

● = Testing Locations

○ = Drinking fountain

□ = Sink

