

BOWERSTON WATER DEPT.
PWS#3400112
LEAD AND COPPER NARRATIVE 2017

APPROXAMENTLY 95% OF ALL MAIN LINES IN OUR SYSTEM ARE MADE OF PVC (C900)

ALL SERVICE CONNECTIONS FROM MAIN TO CURB BOX/METER PIT ARE EITHER BLACK PLASTIC PIPE OR COPPER TUBING.

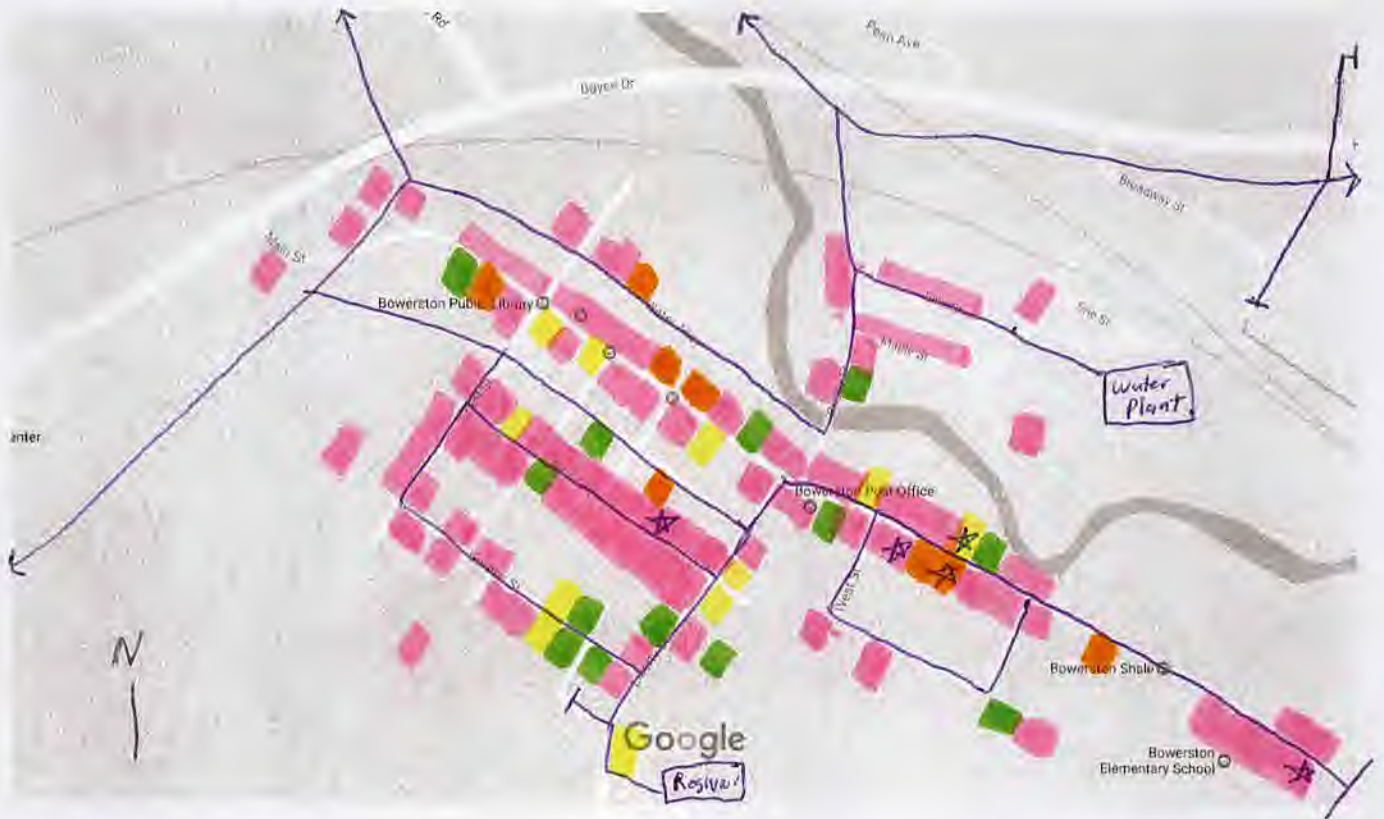
WE SENT EACH CUSTOMER A SURVEY IN OUR SYSTEM. FROM THE SURVEYS RETURNED, WE WERE ABLE TO DETERMINE SOME OF THE AREAS THAT MAY BE MORE SUSCEPTABLE TO LEAD BASED ON THE AGE OF THE HOME, AND THE TYPES OF INTERIOR PLUMBING.

APPROXAMENTLY 93.5% OF THE HOMES IN OUR SYSTEM WERE CONSTRUCTED PRIOR TO 1998 THEREFORE THE HOMES WITH COPPER PLUMBING WERE ASSUMED TO BE MORE SUSCEPTABLE TO LEAD BASED ON POSSIBLE SOLDER CONTENT.

2017 MAR - 8 PM 12: 01

APR 11 2017

Google Maps Bowerston village



Map data ©2017 Google 200 ft

☆ = Sample Sight

— = water line

— = Low Risk

— = Medium Risk

— = High Risk

— = Unknown

2017 MAR -8 PM 12:01

Google Maps Bowerston village



Map data ©2017 Google 500 ft

5.17.17

2017 MAR -8 PM 12:01

Google Maps Bowerston village



Map data ©2017 Google 1000 ft

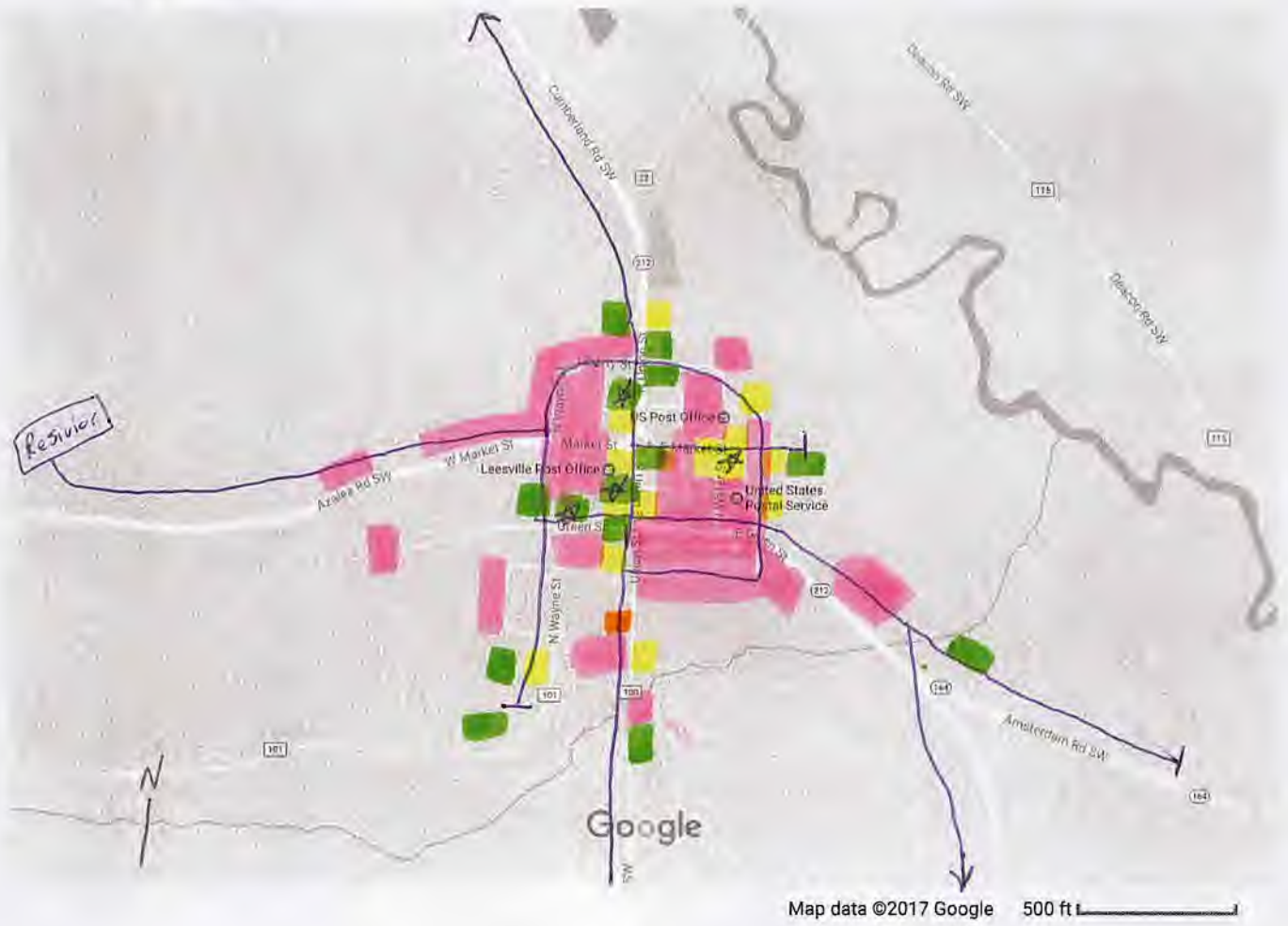
2017 MAR -8 PM 12:02

Google Maps SR 212 line to Leesville




 2017 MAR -8 PM 12:02

Google Maps Leesville Village



SP

2017 MAR -8 PM 12:02

Google Maps SR 212 to CVHS



2017 MAR -8 PM 12:02