

**OVERVIEW**

No lead service or supply water lines. No Lead/Copper sample action levels  
Northwestern Schools has one well located behind the elementary at  
7334 N. Elyria Rd West Salem, Ohio 44287 . This well supplies all potable water  
for the whole campus. Three school grade bldgs, three support facilities and  
our parks And recreation sports complex. pop 1570  
10,000 gal/day avg

**WELL HOUSE- 2003**

Is located 20' North of the well and includes iron filters, softeners, chlorinator  
and a 50K gallon clear well that shares duty with fire protection

**ELEMENTARY- 2003**

Built with local funds and the State of Ohio Schools Facilities Commission.  
houses pre-school thru grade five.

**NW PARKS AND RECREATI 2006**

Built for the use of youth rec leagues and school athletics behind Elementary.  
Seven athletic fields and a support building that has restrooms, concession stand  
and storage area.

**HIGH SCHOOL 1995/2003**

7574 N. ELYRIA RD WEST SALEM, OHIO 44287

Originally built in 1995 with a OSFC addition in 2003. Houses grades 9-12.

**MIDDLE SCHOOL**

7569/7571 N. ELYRIA RD WEST SALEM, OHIO 44287

Originally built in 1957 then in 2003 OSFC did a full scale remedial upgrade.  
Houses grades 5-8 and special educational needs instruction. Also the  
NW Adminisrative Offices and School Transportation facilities 1982-99 and  
athletic field house(2002) and stadium support bldg(1994) are included.

Entity: North Western Local Schools  
Doc Type: Report  
Doc Subtype: \_\_\_\_\_  
Program: NDAGW  
County: Wayne  
Secondary ID: OH 8561712  
EDOC in color



2 WORKING DAYS  
BEFORE YOU DIG  
CALL TOLL FREE 800-362-2764  
OR  
CALL TOLL FREE 800-925-0988

THE LOCATION OF THE UNDERGROUND UTILITIES HEREON ARE AS OBTAINED FROM THE  
OWNER'S RECORDS AND AS VERIFIED FROM DILIGENT FIELD SEARCHES WHERE ACCESSIBLE.

BENCHMARK:  
U.S.G.S. DISC IN WALL @  
S.W. CORNER OF MIDDLE  
SCHOOL DESIGNATION:  
R 238 ELEVATION: 1153.84

T NAME:

# NORTHWESTERN LOCAL SCHOOL DISTRICT

## 7571 North Elyria Road

### West Salem, OHIO 44287-9790

#### NON-TRANSIENT NON-COMMUNITY WATER SYSTEM

#### PWS I.D. # 8561712 - STU I.D. # 8561270

#### WAYNE COUNTY - CHESTER TWP., N.W. 1/4, SEC. 6

#### WELL & WATER MAIN EXTENSION FOR

#### NORTHWESTERN JR. & SENIOR HIGH SCHOOLS

PROJECT HAS BEEN SUMMARIZED BELOW:

THIS PROJECT IS TO DISCONTINUE USE OF THE WELL AT THE EXISTING  
PWS I.D. # 8561712 AND TO ELIMINATE THIS PWS AND THE  
SR SCHOOL DISTRICT CAMPUSES SERVED BY USING THE  
WATER TREATMENT EQUIPMENT (APPLICATION #25427WS) AT THE

NOTES:  
1.0 General:

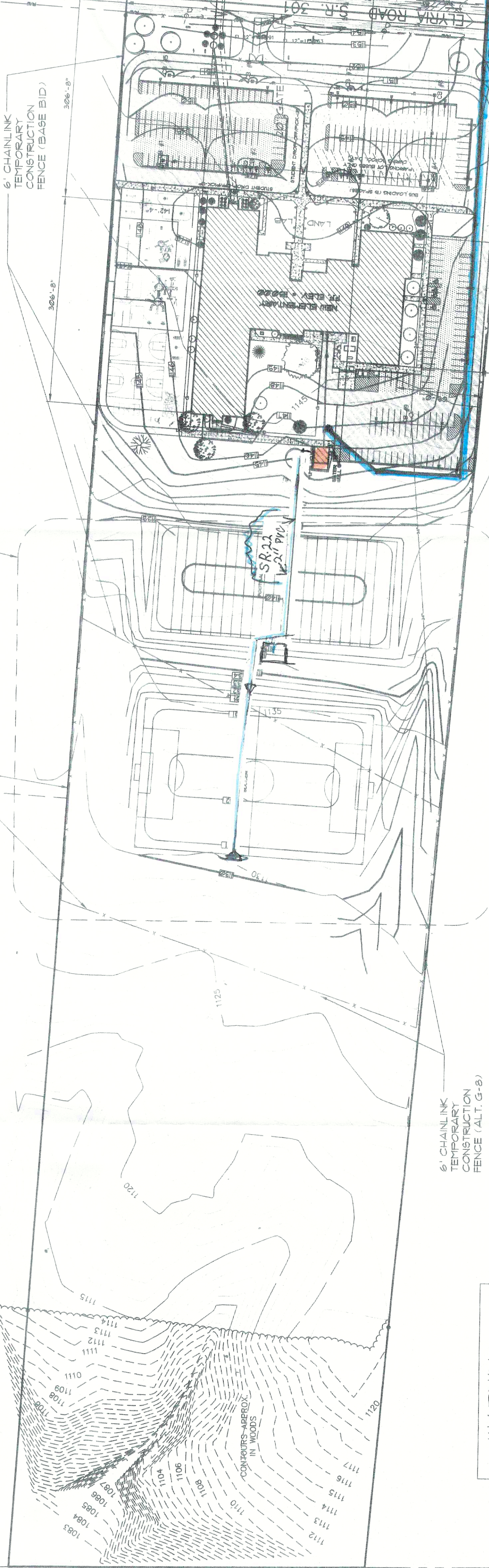
1. All pipe, fittings, valves, hydrants and blow offs shall conform to the latest standards issued by the AWWA.
2. Pipes and pipe fittings containing more than 65% lead shall NOT be used.

2008

WATER LINE  
WELL HOUSE

ALT. GRADING PLAN G-8  
SEE SHEET C6

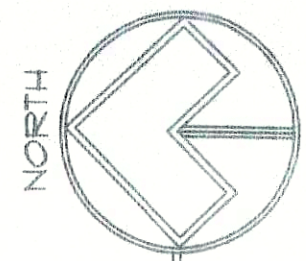
6" CHAINLINK  
TEMPORARY  
CONSTRUCTION  
FENCE (ALT. G-8)



**WARNING**  
EXISTING SERVICE LINES HAVE  
BEEN SCALED OFF EXISTING  
DRAWINGS. EXACT LOCATIONS  
ARE NOT SHOWN ON  
ANY OTHER GROUP'S  
NOT ALL EXISTING SERVICES  
HAVE BEEN SHOWN  
ON THIS DRAWING  
DURING CONSTRUCTION NEW  
SERVICES COULD CHANGE IN  
THE FIELD.

OVERALL SITE PLAN  
SCALE: 1"=100'-0"

215 PARKING SPACES



4" HDPE  
SERVICE PIPING

RECEIVED  
FEB 10 2007

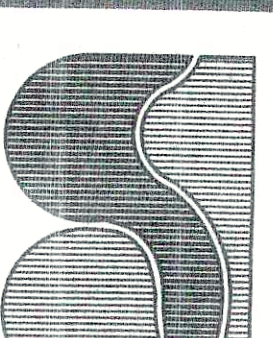
OHIO EPA NED0

C2



NEW ELEMENTARY SCHOOL  
FOR  
NORTHWESTERN  
LOCAL SCHOOL DISTRICT  
WEST SALEM, OHIO

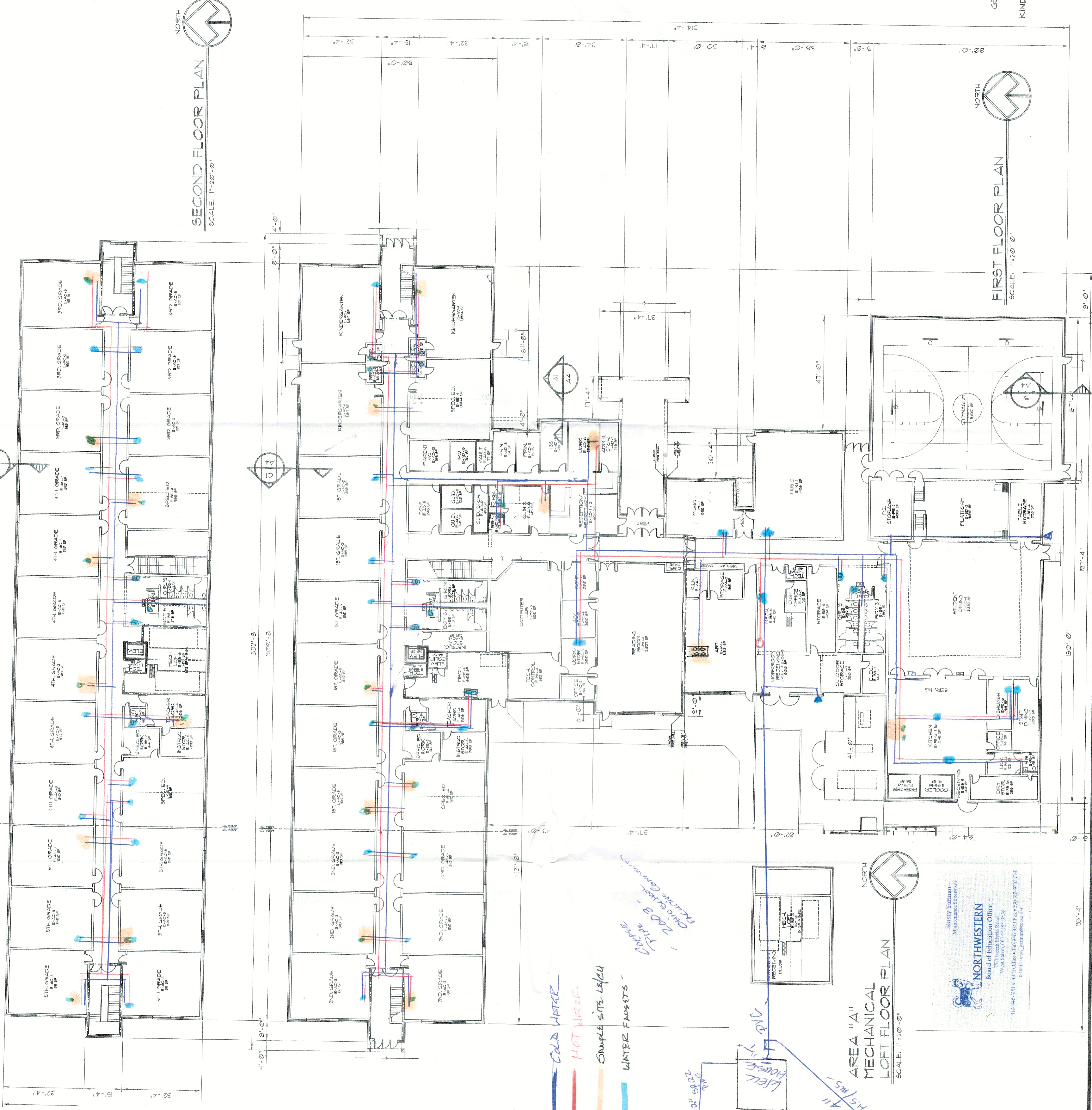
BUEHRER GROUP  
ARCHITECTURE & ENGINEERING  
314 CONANT STREET  
MAUMEE, OHIO 43531



JOB NO.: 010203  
DATE: 03/19/02  
FILE: 010203-02.DWG  
SCALE: 1"=100'-0"  
REVISION:  
A  
A  
A  
CONSTRUCTION DOCUMENTS



ELEMENTARY- 2003  
Built with local funds and the State of Ohio Schools Facilities Commission.  
houses pre-school thru grade five.  
NW PARKS N RECREATION 2006  
Built for the use of youth rec leagues and school athletics behind Elementary.  
Seven athletic fields and a support building that has restrooms, concession stand  
and storage area.



AREA "A"  
MECHANICAL  
LOFT FLOOR PLAN  
SCALE: 1/8"=1'-0"

Rusty Yaman  
Maintenance Supervisor  
**NORTHWESTERN**  
Board of Education Office  
751 North Lynn Road  
West Salem, OH 43081-9708  
419-846-3328 x. 4441 Office • 330-846-3301 Fax • 330-337-5978 Cell  
e-mail rusty.yaman@ednet.net

SECOND FLOOR  
BUILDING AREA KEYPLAN  
SCALE: 1/8"=1'-0"

56,120 SF.  
(TOTAL 1ST & 2ND FLOOR)  
USE GROUP E

22,141 SF  
(TOTAL 1ST FLOOR & MECH. LOFT)  
USE GROUP A3

--- TWO HOUR  
FIRE WALL

FIRST FLOOR  
BUILDING AREA KEYPLAN  
SCALE: 1/8"=1'-0"

CODE COMPLIANCE DATA

USE GROUP: E & A3  
TYPE OF CONSTRUCTION: 2C - BUILDING FULLY SPRINKLED  
BUILDING AREA: FIRST FLOOR = 59,186 SF. (19,193 SF USE GROUP A3 (GROCES))  
SECOND FLOOR = 23,775 SF. (62,95 SF USE GROUP A3 (GROCES))  
TOTAL = 82,961 SF. (72,953 SF USE GROUP E)  
ALLOWABLE AREA: A3 = 2 ST. 30' = 6,400 SF  
(COSPEC TABLE 3002) E = 2 ST. 30' = 14,400 SF  
ALLOWABLE AREA: A3 = 3 ST. 30' = 34,275 SF  
(COSPEC TABLE 3002) E = 3 ST. 30' = 60,664 SF  
OCCUPANT LOAD: 10 (COSPEC SECTION 1008.1.2)  
STUDENT CLASSROOMS = 19 (COSPEC SECTION 1008.1.2)  
GEN. CLASSROOMS = 10 (COSPEC SECTION 1008.1.2)  
DESIGN LOADS: SEE STRUCTURAL DRAWINGS

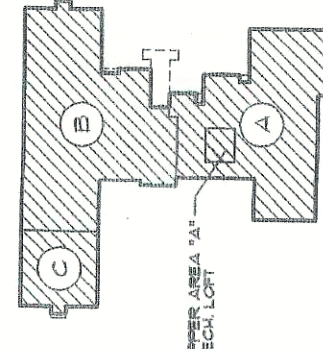
COEFFICIENTS OF  
HEAT TRANSMISSION

WALLS:  
INSIDE SURFACE (STILL AIR)  
8" CONCRETE BLOCK  
3" RIGID INSULATION  
1" AIR SPACE  
4" COMMON BRICK  
OUTSIDE SURFACE (15 MPH WIND)  
TOTAL:  
U = 1/R = 0.0547 BTU  
H·F·F

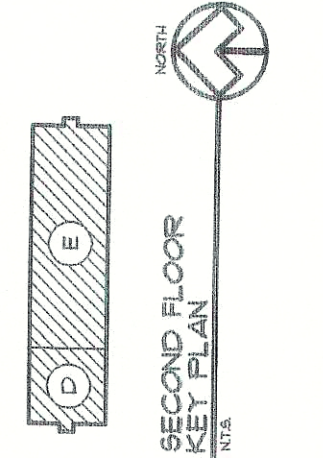
R-0.68  
R-0.71  
R-15.00  
R-0.90  
R-0.80  
R-0.21  
R-0.26

ROOF:  
INSIDE SURFACE (STILL AIR)  
ACoustICAL CEILING TILE  
1/2" Gypsum Board  
STEEL PURLING  
METAL LINER PANEL  
6" BATT INSULATION  
METAL STANDING SEAM ROOF  
OUTSIDE SURFACE (15 MPH WIND)  
TOTAL:  
U = 1/R = 0.0414 BTU  
H·F·F

R-0.68  
R-1.25  
R-0.00  
R-0.00  
R-0.00  
R-19.00  
R-0.00  
R-2.10



FIRST FLOOR  
KEY PLAN  
SCALE: 1/8"=1'-0"



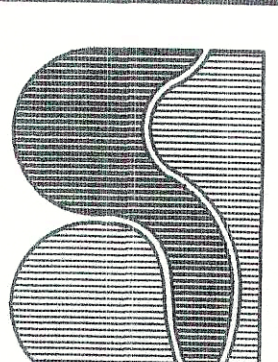
SECOND FLOOR  
KEY PLAN  
SCALE: 1/8"=1'-0"

GENERAL CLASSROOMS = 810 SF MIN. (20 STUDENTS PER ROOM)  
LOCKERS IN CLASSROOMS (20 PER ROOM)  
KINDERGARTEN CLASSROOMS = 1,094 SF MIN. (20 STUDENTS PER ROOM)  
LOCKERS IN CLASSROOMS (20 PER ROOM)  
O.S.F.C. AREA CALCULATIONS  
55,136 SF = FIRST FLOOR  
23,076 SF = SECOND FLOOR & MECH. LOFTS  
18,212 SF = TOTAL AREA (49 SF UNDER AREA ALLOWED)



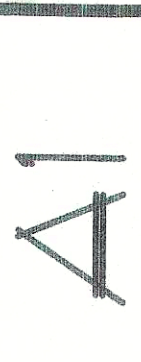
NEW ELEMENTARY SCHOOL  
FOR  
NORTHWESTERN  
LOCAL SCHOOL DISTRICT  
WEST SALEM, OHIO

BUEHRER GROUP  
ARCHITECTURE & ENGINEERING  
314 CONANT STREET  
MAUMEE, OHIO 43531



JOB NO.: 010203  
DATE: 11/06/01  
FILE: 0103F01015  
SCALE: 1/8"=1'-0"  
REVISION:  
A  
B  
C  
D  
E  
F  
G  
H  
I  
J  
K  
L  
M  
N  
O  
P  
Q  
R  
S  
T  
U  
V  
W  
X  
Y  
Z

DESIGN DEVELOPMENT

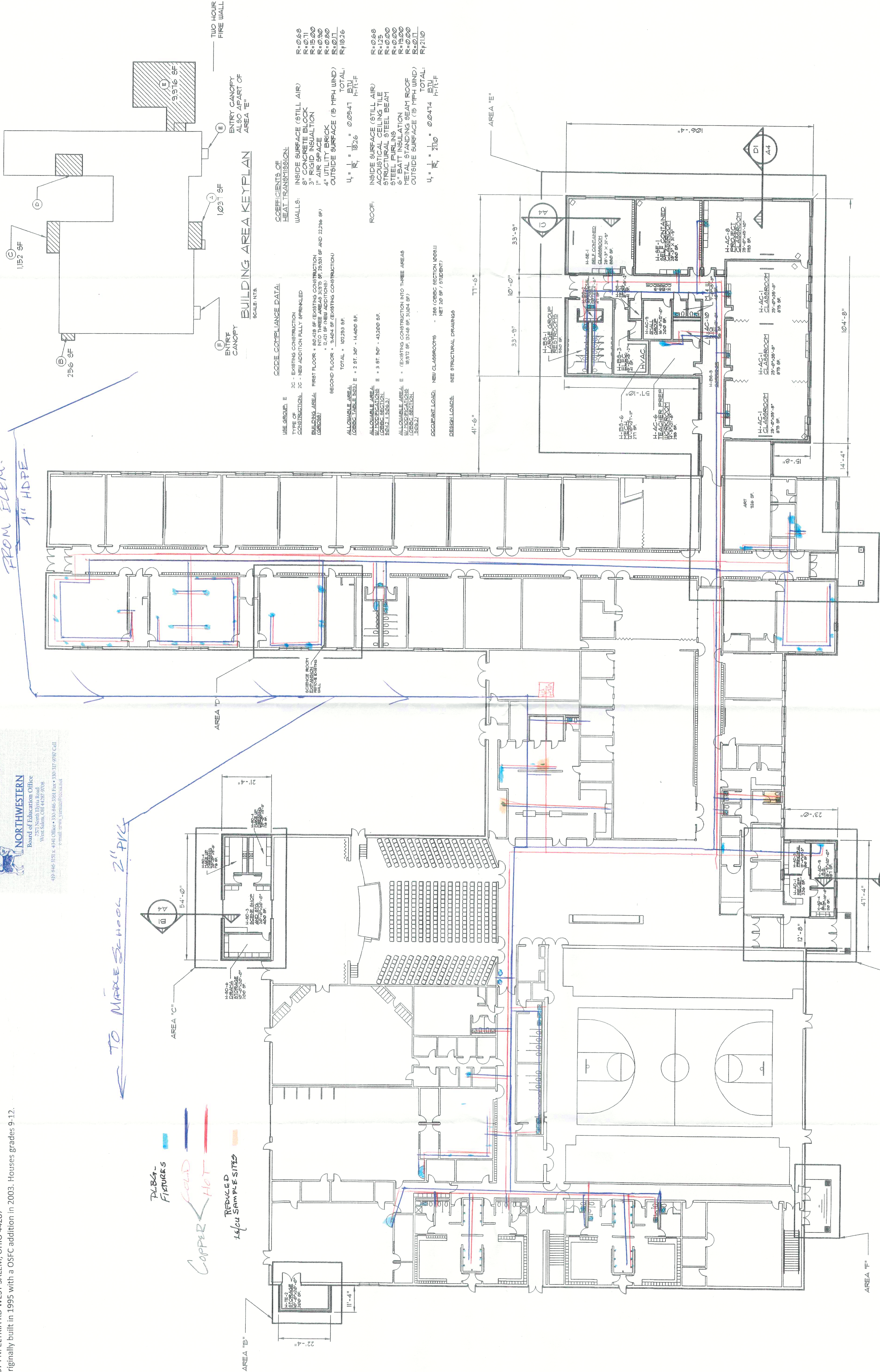




PUBG-  
Figures  
Copper  
Lead  
Hot  
Reduced  
14/04 SAMPLE SITES

TO MAKE SLOPE 2" P/LF

FROM ELEM.  
4" HDPE



OVERALL  
FLOOR PLAN  
SCALE: 1/8"=1'-0"



HIGH SCHOOL CLASSROOMS = 875 SF (25 STUDENTS PER ROOM)  
PROJECT CLASSROOM = 1193 SF (25 STUDENTS PER ROOM)  
SMALL GROUP ROOM = 200 SF ( 4 - 5 STUDENTS PER ROOM)  
SELF CONTAINED CLASSROOM = 880 SF ( 15 -18 STUDENTS PER ROOM)

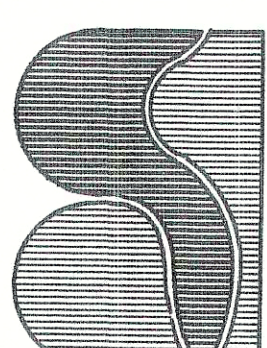
AREA "A" = 1,031 SF  
AREA "B" = 256 SF  
AREA "C" = 1,152 SF  
AREA "E" = 9,316 SF

TOTAL AREA = 12,421 SF (15 SF UNDER AREA ALLOWED)



ADDITIONS  
FOR  
NORTHWESTERN  
HIGH SCHOOL  
WEST SALEM, OHIO

**BUEHRER GROUP**  
ARCHITECTURE & ENGINEERING  
314 CONANT STREET  
MAUMEE, OHIO 43531

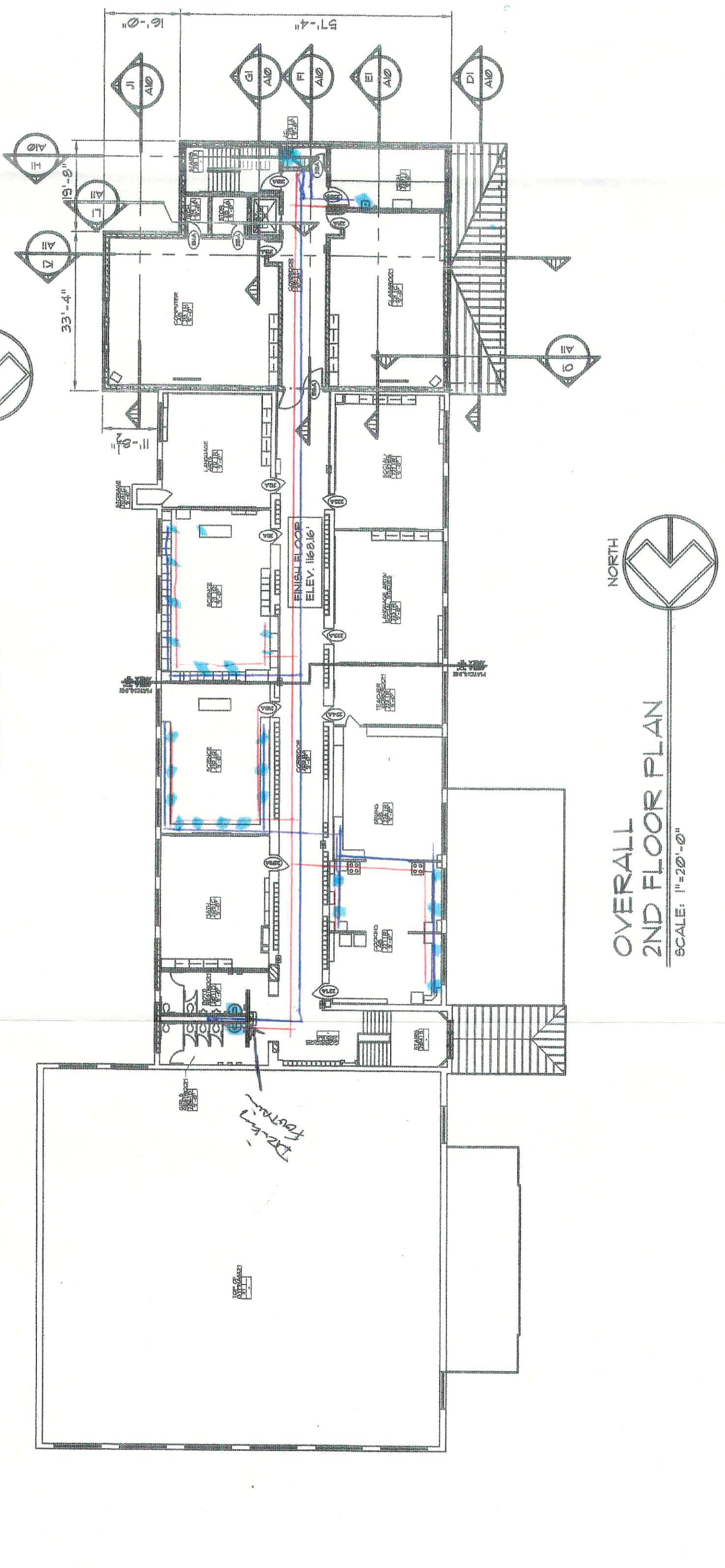


JOB No.: 010610  
DATE: 07/18/01  
FILE: 0120FF02.DWG  
SCALE: 1/8"=1'-0"  
REVISION:

SCHEMATIC DESIGN

A1





5618 SF. = FIRST FLOOR NEW CONSTRUCTION  
3,293 SF. = SECOND FLOOR NEW CONSTRUCTION  
+  
8911 SF. = TOTAL AREA (21 SF. OVER AREA ALLOWED)  
= 8,884 SF. ALLOWABLE AREA BY O.S.F.C.

**MIDDLE SCHOOL**  
7569/7571 N. ELYRIA RD WEST SALEM, OHIO 44287  
Originally built in 1957 then in 2003 OSFC did a full scale remedial upgrade.  
Houses grades 5-8 and special educational needs instruction. Also the  
NW Administrative Offices and School Transportation facilities are attached.

