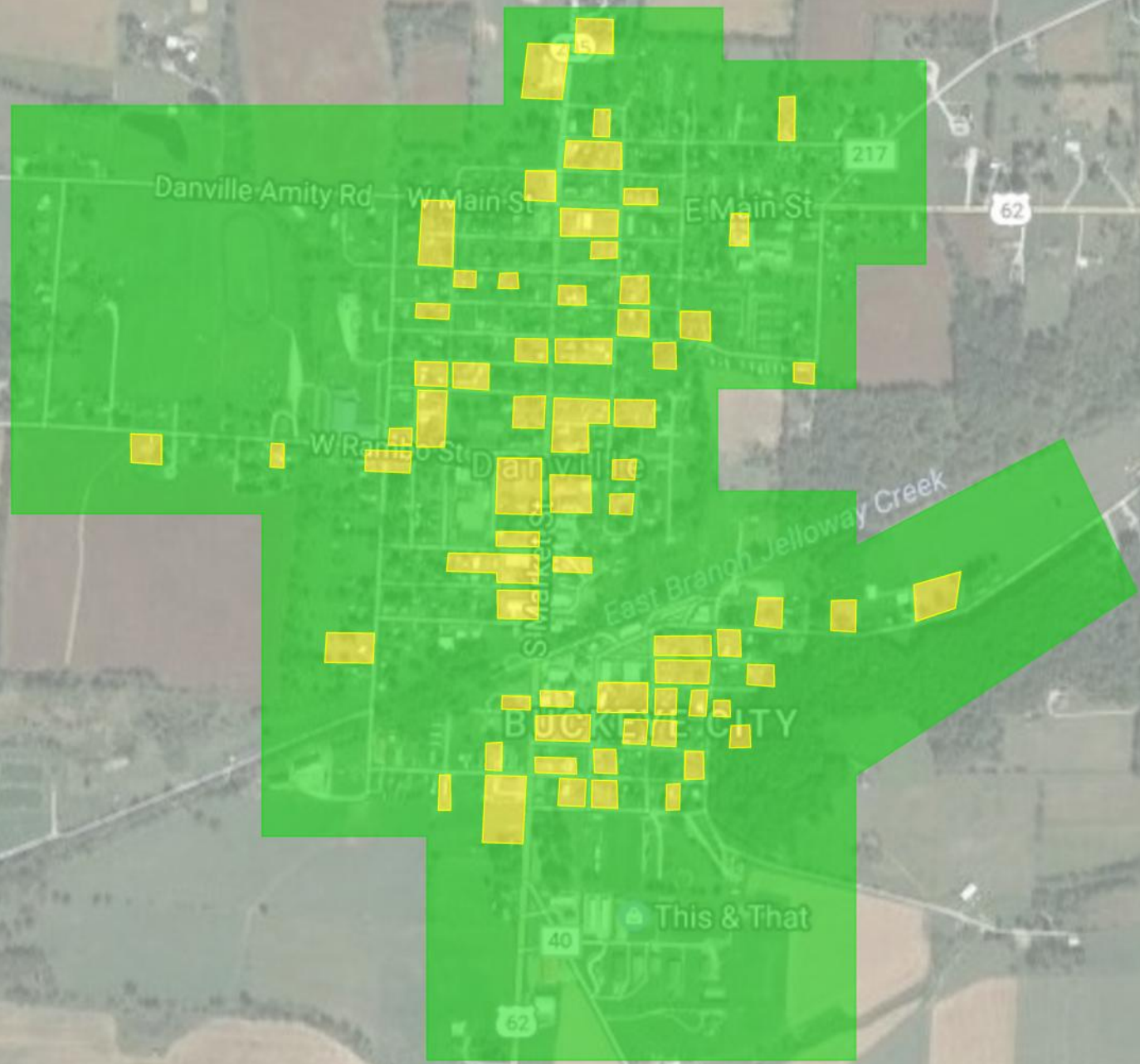
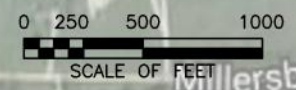




LEGEND  
 LEAD  
 NON-LEAD  
 UNKNOWN



## DANVILLE VILLAGE

SCALE : SEE BAR SCALE

NOTES:

1. ALL MAIN LINES ARE MADE OF PLASTIC, TRANSITE, CAST IRON, & DUCTILE IRON. ALL SERVICE LINES ARE MADE OF COPPER, PLASTIC, AND GALVANIZED.
2. DUE TO THE AGE OF THE HOMES, ALL OR MOST HOMES LIKELY CONTAIN LEAD SOLDER ON INTERNAL PLUMBING.
3. AREAS THAT ARE HIGHLIGHTED YELLOW INDICATE THE PRESENCE OF A LEAD GOOSE NECK BEING ON THE SERVICE LINE.
4. DANVILLE ALSO SERVES DANVILLE OFFICE & PRESCHOOL, DANVILLE HIGH SCHOOL, DANVILLE K-8, & ALSO AN AMERICAN LEGION.
5. BUILDINGS IN OHIO BUILT PRIOR TO 1998 OR THAT USE PLUMBING MATERIAL OR SOLDER MANUFACTURED BEFORE 1998 MAY HAVE MATERIALS WITH GREATER THAN 8% LEAD AND ARE AT A HIGHER RISK OF CONTRIBUTING LEAD TO THE DRINKING WATER THAN MATERIALS MANUFACTURED AFTER 1998. IN ADDITION, BUILDINGS BUILT AND PLUMBING MATERIALS MANUFACTURED AFTER 2014 WERE REQUIRED TO HAVE LESS THAN 0.25% LEAD BY WEIGHT AND HAVE THE LOWEST RISK FOR CONTRIBUTING LEAD TO THE DRINKING WATER. IT SHOULD BE NOTED HOWEVER THAT, ALTHOUGH PROHIBITED, SOME USE OF LEADED SOLDER OR LEADED COMPONENTS MAY HAVE OCCURRED AFTER THE PROHIBITIONS BECAME EFFECTIVE.

VILLAGE OF DANVILLE  
 PO BOX W  
 DANVILLE, OHIO 43014  
 PHONE # (419) 599-6888  
 PWS ID # OH4200112