

Non Transient System

Operator of Record: **Marty Ryan** Certification #: **WS3-1012585-01**

EPA Rep: **Ray Shesky**

Last Tested 2015 90th Percentile: Lead < 5.0 ug/l, Copper < 50 ug/l

- Fed from 10" Ductile Iron Pipe
 - Built 1985
 - Service Line is 1" Copper
 - Interior Plumbing Copper
 - Sample tap Locations
 - Warehouse Drinking Fountain
 - Go in under the awning (main entrance), you will be in waiting area, if you go to the right you will go down a hallway that leads to the kitchen/ breakroom, there is a door on the left that leads out to the warehouse, go thru that door and the drinking fountain will be to the left of the door
 - Kitchen
 - Go in under the awning (main entrance), you will be in waiting area, if you go to the right you will go down a hallway that leads to the kitchen/ breakroom.
-
- Fed from 10" Ductile Iron Pipe
 - Built 1981
 - Service Line is ¾" Copper
 - Interior Plumbing is Copper
 - Sample Tap Location
 - Restroom
 - Enter in public entrance, the restroom is the 1st door you see.
 - Kitchen
 - Enter in public entrance, to the right of the restroom is an "Employee Only" door, go thru that door, follow the hall around to the left and it will lead to the kitchen.
-
- Fed from 10" Ductile Iron Pipe
 - Built 1972
 - Service Line is ¾" Copper
 - Interior Plumbing is Copper
 - Sample Tap Location
 - Restroom
 - Enter thru the door to the right, the restrooms are on the right side.

Key Citing Regulatory Dates:

- a. *before 1998 there was no limit on lead, may have materials with greater than 8% lead and are at a higher risk of contributing lead to the drinking water than materials manufactured after 1998,*
- b. *1998 – 2014 lead solder was banned and there was lower content of lead in brass,*
- c. *After 2014 plumbing materials were required to have less than 0.25% lead by weight and have the lowest risk for contributing lead to the drinking water.*

Service Lines (Colors)

Lead = yellow

Non-Lead = green

No Information = light gray



Legend

- Obetz Water Main
- parcels

SATELLITE 4

1 inch = 100 feet

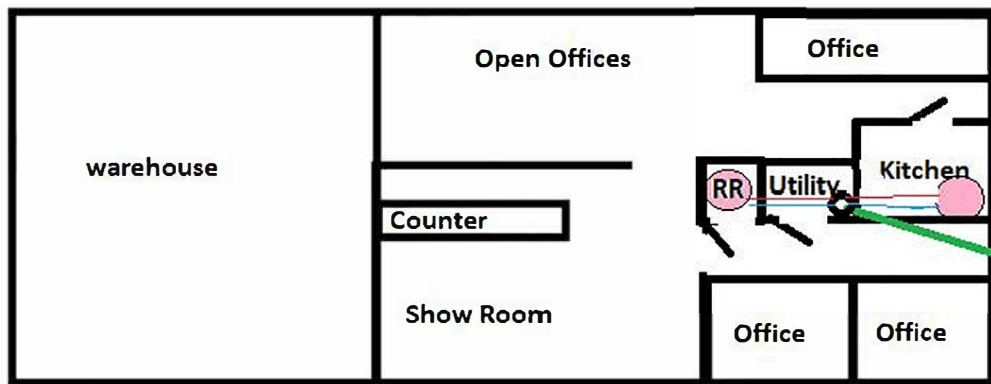
850 Feet



North

West

East



Yellow = Lead Service

Green = No Lead
Service

Grey = Unknown

South

Hose Bib

Blue - Cold

Red - Hot

East

Warehouse

North

South

DF

RR

RR

Utility

Sink

Kitchen

Hot water tank

Yellow = Lead service

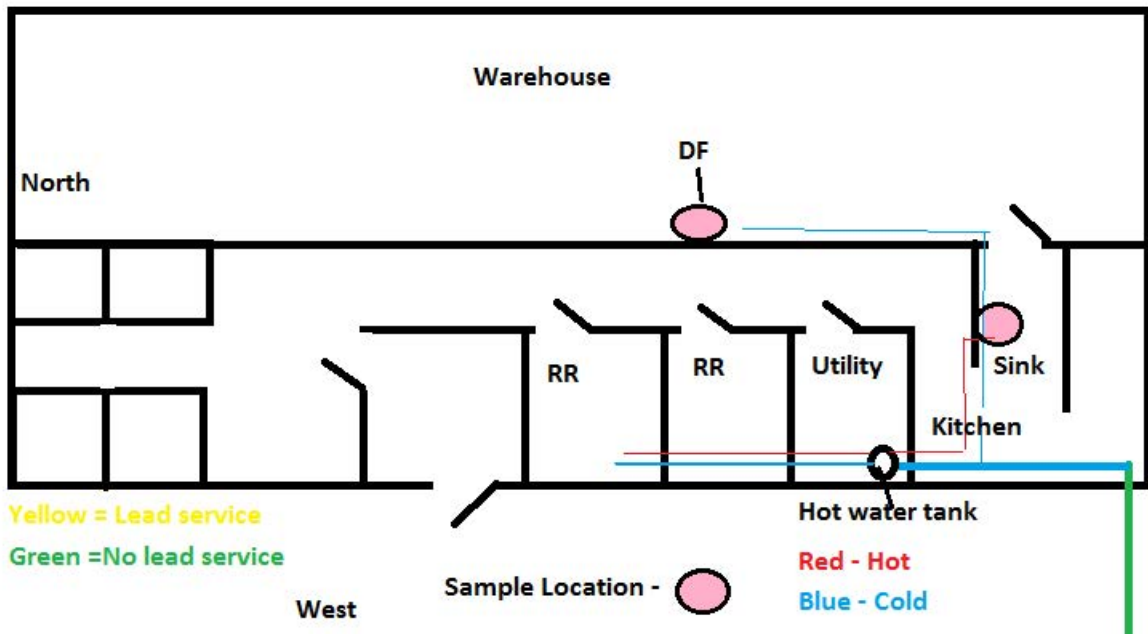
Green = No lead service

West

Sample Location -

Red - Hot

Blue - Cold



West



South

Shop / Garage

North

Office

RR

Yellow = Lead Service

Green = No lead service

Grey = Unknown

Red - Hot

Blue Cold

East

