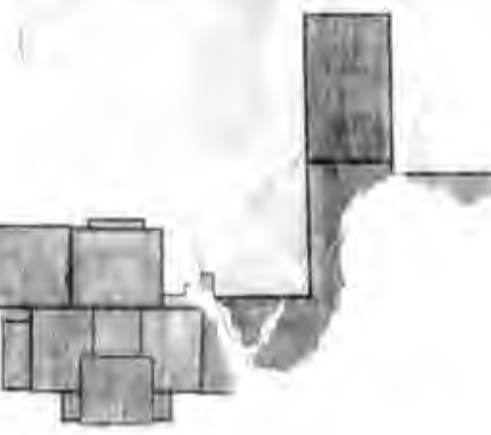
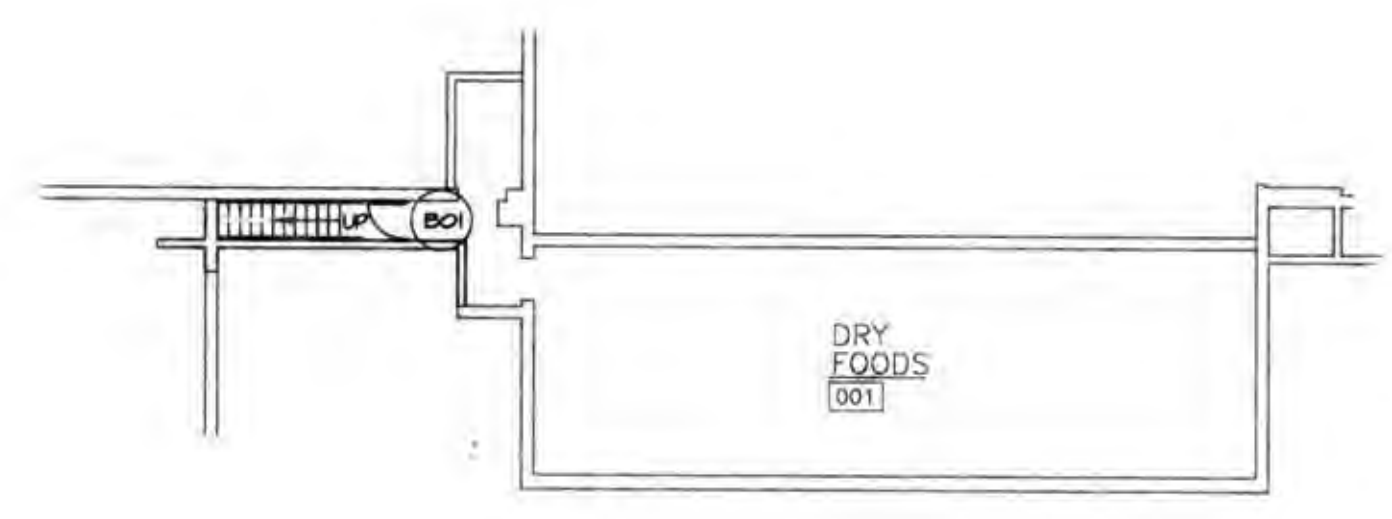


SECOND FLOOR PLAN - PLUMBING
SCALE 1/8"=1'-0"

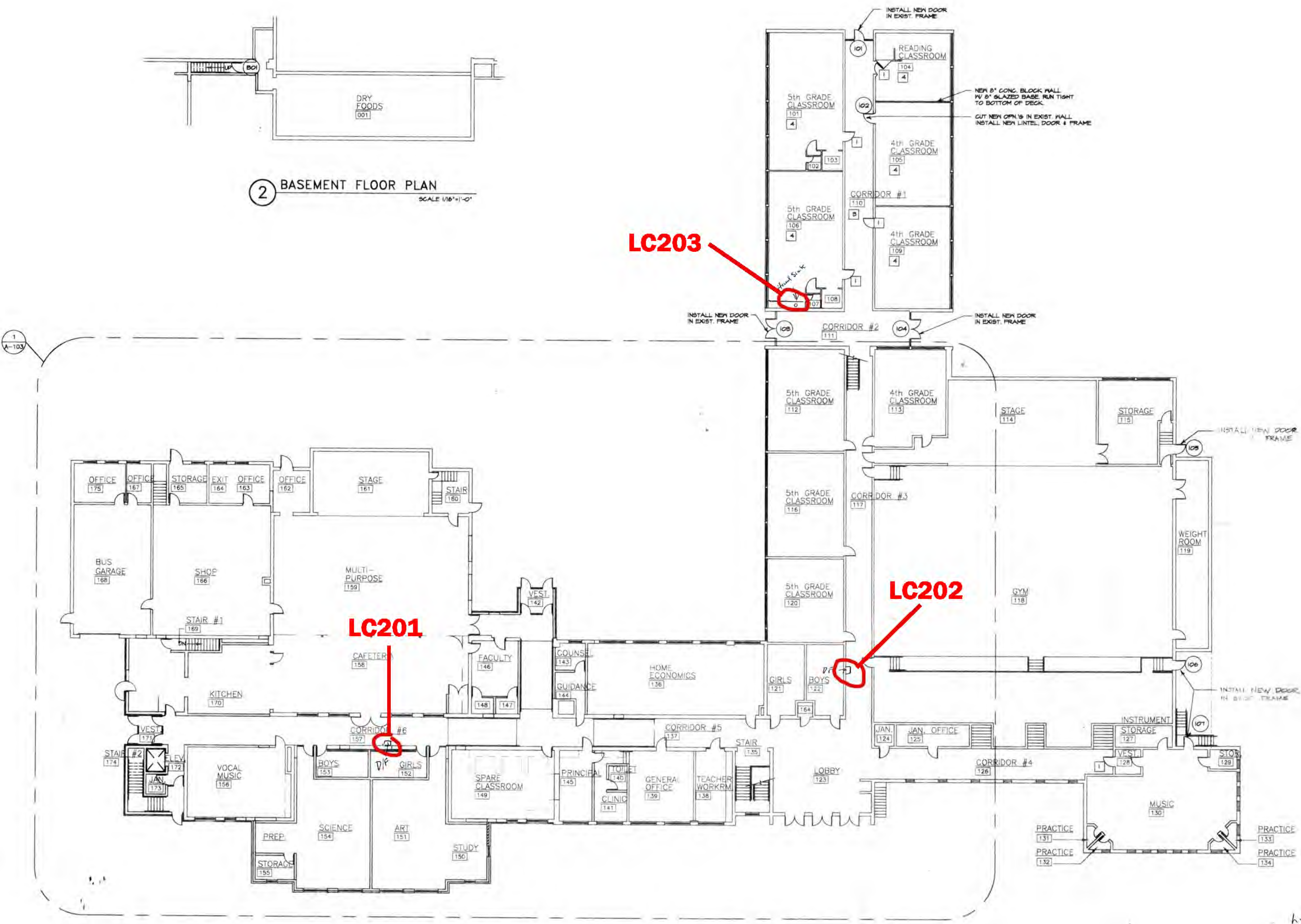


REV. PA

SOUTH RANGE INTERMEDIATE SCHOOL
SOUTH RANGE SCHOOL DISTRICT
NORTH LIMA, OHIO



2 BASEMENT FLOOR PLAN
SCALE 1/8"=1'-0"



1 FIRST FLOOR COMPOSITE PLAN
SEE DRAWING A501 FOR EXIST. ROOM FINISH REQUIREMENTS
SCALE 1/8"=1'-0"

- 1 STRIP & REFRESH EXIST. HOOD DOOR (INT. & EXT.) & JAMB
- 2 INSTALL 1/4" EXIST. PLYWOOD UNDERLAYMENT BORDERS & GUE TO EXIST. HOOD FLOOR REMOVE EXIST. QUARTER ROUND
- 3 G.C. TO REMOVE EXIST. HOOD BASE
- 4 G.C. TO REMOVE EXIST. BASE IN ALT. G-B
- 5 INSTALL METAL FRAMING LATH & B COAT PLASTER IN OPENING LEFT BY DUCT WORK REMOVAL
- 6 CLEAN, SAND & REFINISH EXIST. HOOD BASE

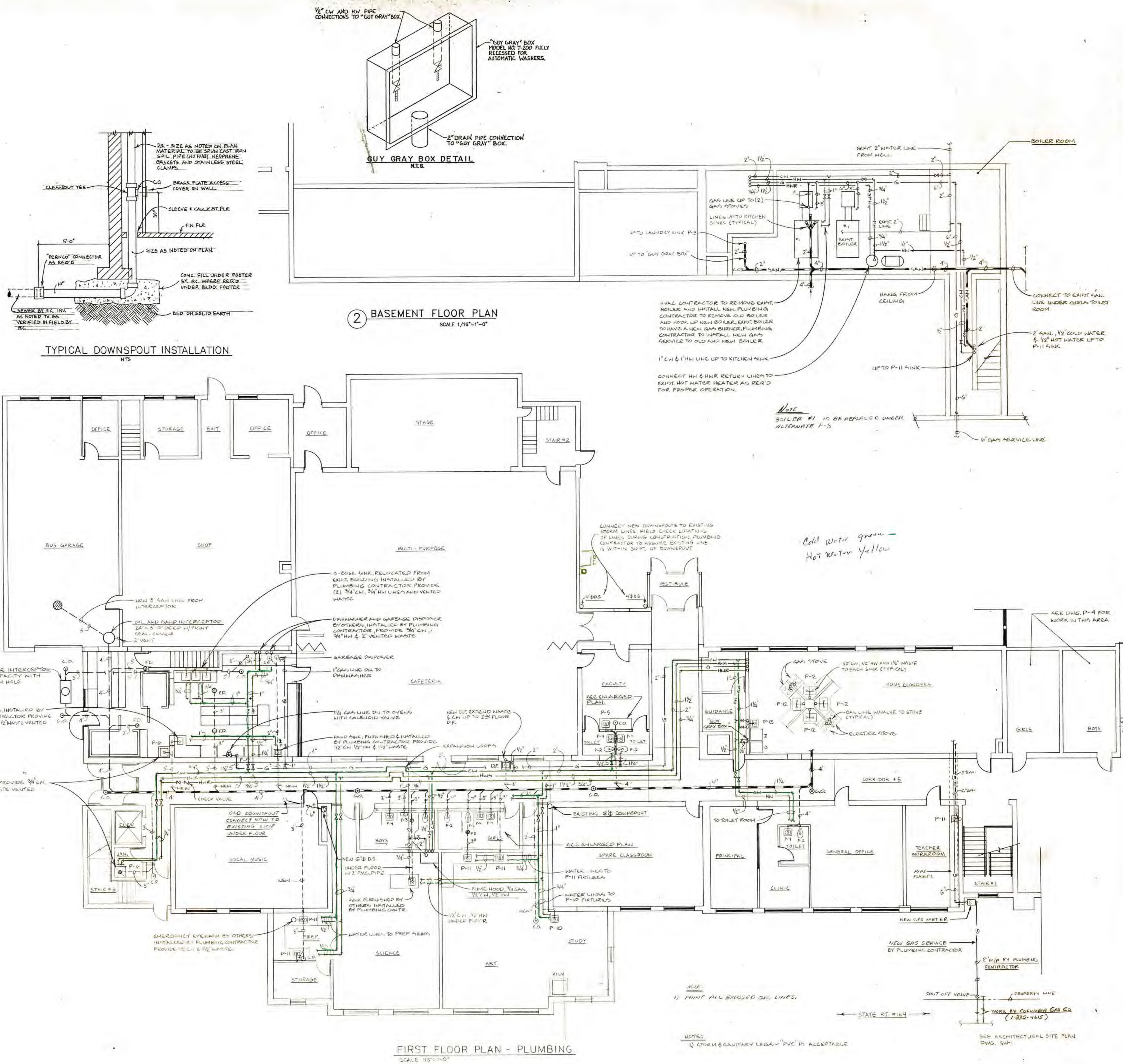
Gold Water Color
Hot Water Color
Pleading from Well to Soften PVC
From Solder to Distribution S-T-1 & Copper Bldg Built 1927
Sampling Sites, Drinking Fountains
2nd Floor - 2nd Floor Except Hand Sink Room 108
First Floor Drinking Fountains 11 Locations from Cafeteria to Restroom in Gym to Restroom
Wall North Hall 2nd Floor Drinking Fountains are in mirrored position

Lead & Copper
Sample Sites 1st floor
East West Hall by Girls Rest Room
North Hall By Boys Rest Room
North Hall Hand Sink Room 108

Date: 9/20/17
Drawn: JDB
Scale: 1/8"=1'-0"

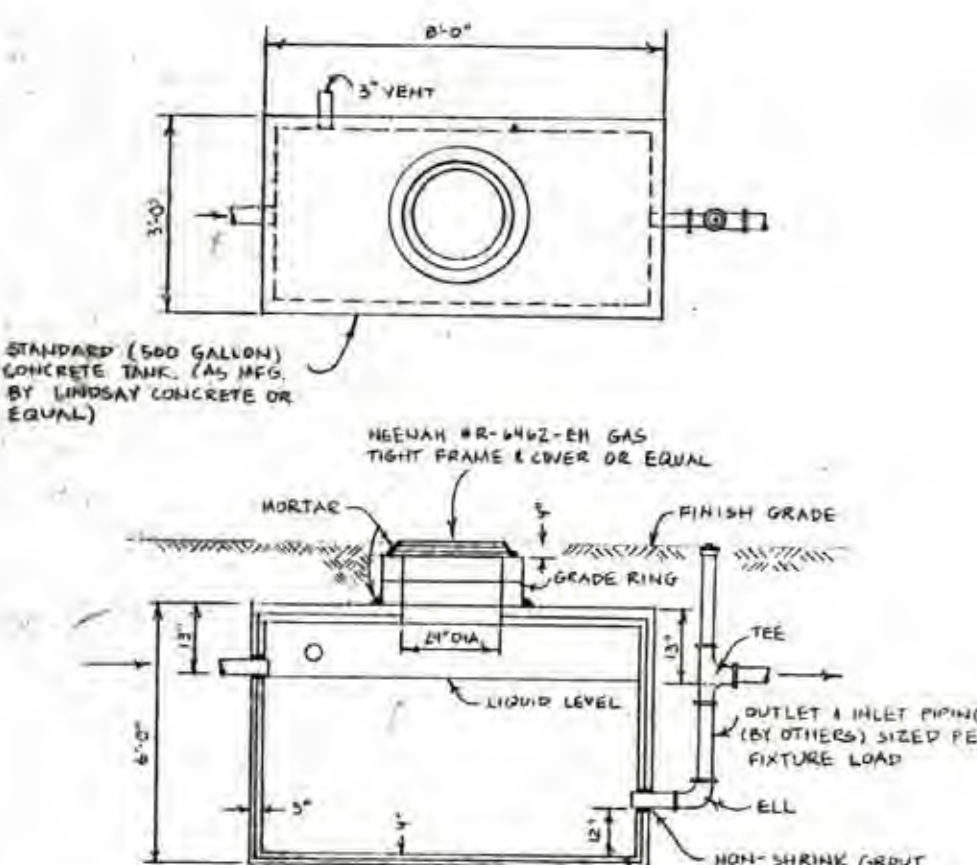
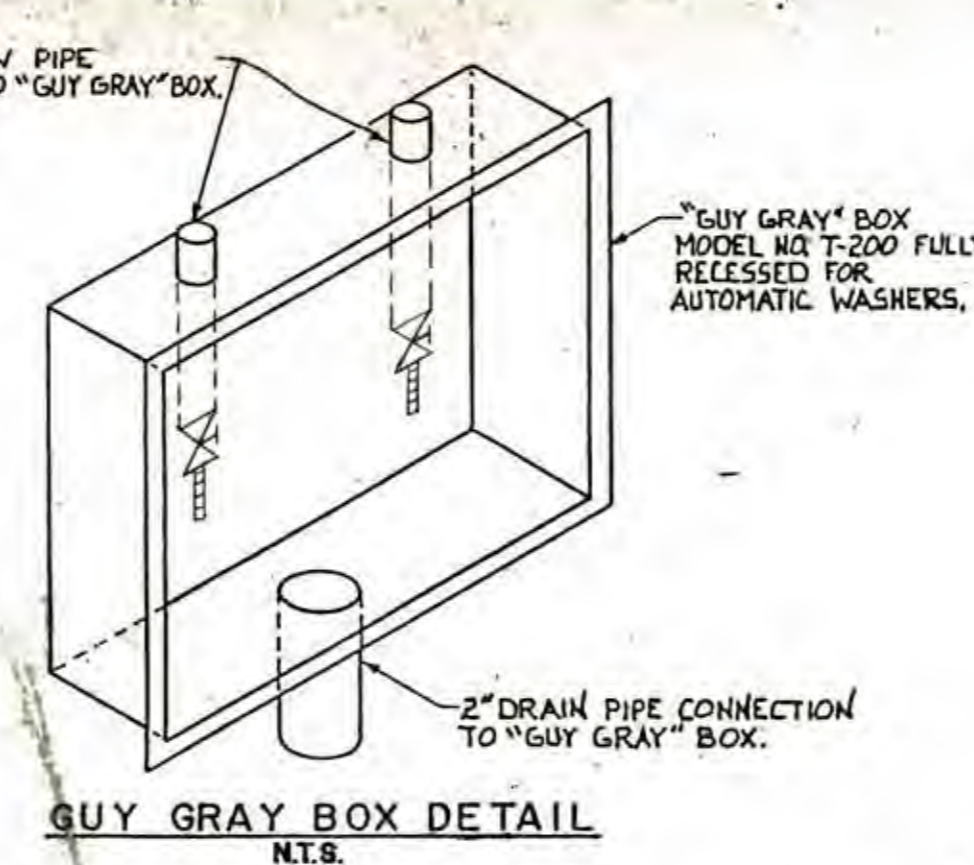
FIRST FLOOR COMPOSITE PLAN

APRIL 22, 1993



2 BASEMENT FLOOR PLAN
SCALE 1/16"=1'-0"

TYPICAL DOWNSPOUT INSTALLATION
NTS



FIRST FLOOR PLAN - PLUMBING
SCALE 1/16"=1'-0"

NOTE:
1) PAINT ALL EXPOSED GAS LINES.

NOTE:
1) ATMOSPHERIC & SANITARY LINES - 1/2" PVC IS ACCEPTABLE

SEE ARCHITECTURAL SITE PLAN DWG. S-11

*Cold Water green
Hot Water yellow*

SEE DWG. P-4 FOR WORK IN THIS AREA

NEW GAS SERVICE BY PLUMBING CONTRACTOR

2" HD BY PLUMBING CONTRACTOR

SHUT OFF VALVE

PROPERTY LINE

WORK BY COLUMBIA GAS CO (7-352-4445)