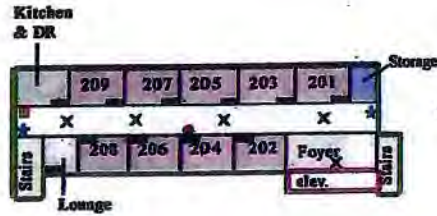


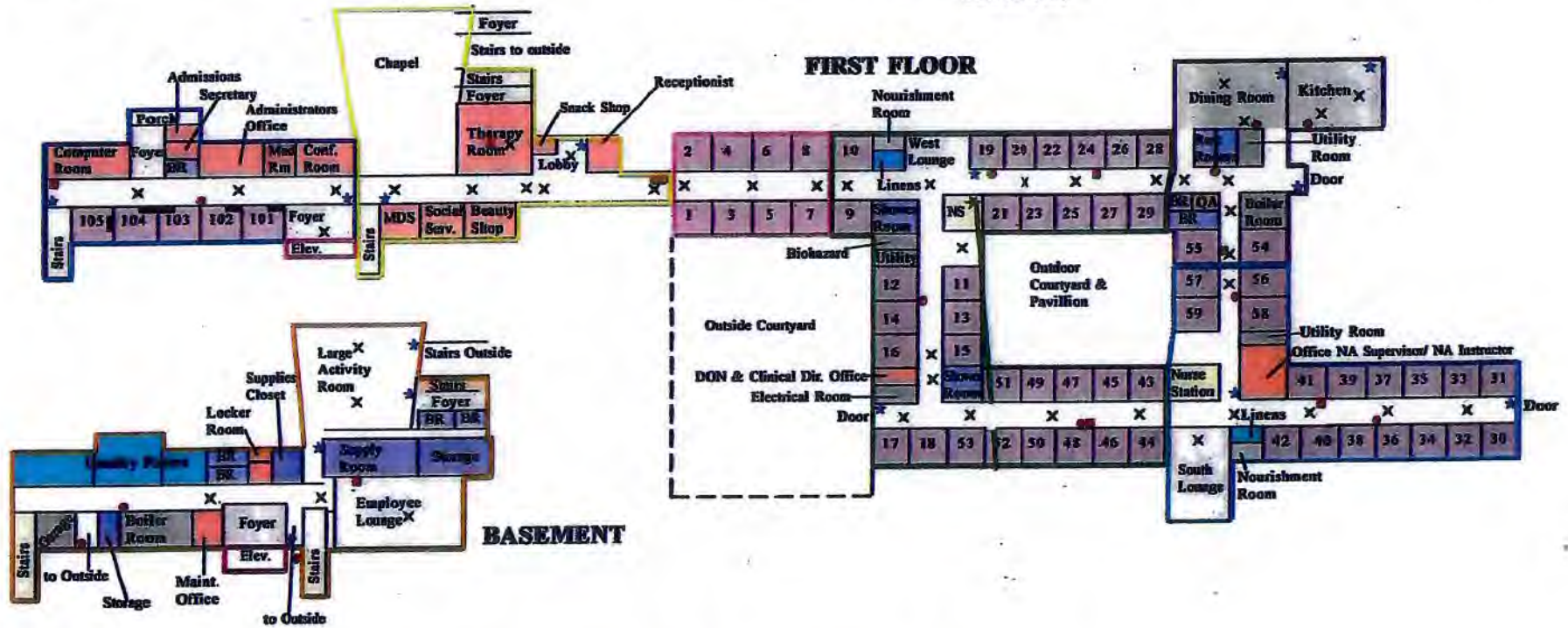
NORTH



**SECOND FLOOR**

- Compartment 3 - Resident Rooms
- Compartment 4 - Offices
- Compartment 5 - Bathrooms/Shower Rooms
- Compartment 6 - Dining Areas/Kitchens
- Compartment 9 - Lounges/Foyers
- Compartment 10 - Stairs
- Compartment 11 - Nurses Stations
- Compartment 12 - Laundry/Linens
- Compartment 13 - Storage/Supply Areas
- Other (Includes Utility rooms, Boiler Room, etc.)

- Smoke Detector - Wall Mounted
- ✕ Smoke Detector - On Ceiling
- ★ Pull Station
- Fire Extinguisher
- Light and Sound



# St. Mary's Alzheimer's Center

PWS# 5003012

**NARRATIVE OF ST. MARY'S ALZHEIMER'S CENTER - PWS #5003012**  
**LEAD MAPPING AND SAMPLE MONITORING POINTS - PLUMBING**

Address:

1899 W. Garfield Street  
Columbiana, Ohio 44408  
330-549-9259

Administrator: Miriam Maughan

Maintenance Director: Steve Walker

St. Mary's Alzheimer's Center is a 110 bed, long term care skilled nursing facility. The facility has approximately 100 employees. The building was constructed and opened in 1987. It is a one story, wood constructed/brick veneer, shingle roof facility. The facility has full fire sprinkler protection throughout, with insulated and heated attic. There is an on-site commercial Kitchen and Laundry.

The Administrative offices are located in a two-story building with basement on the west side of the nursing facility. The building consists of concrete flooring and wall construction, and has full fire sprinkler protection throughout. No rooms in this building are occupied by residents.

St. Mary's does not receive its water from any municipality. The water source is obtained from an on-site well, and distributed throughout the facility after chlorination treatment. The wellhead is located in a concrete enclosure adjacent to the basement boiler room (location is depicted on page 2 of the treatment equipment schematic sheets enclosed).

The water service and distribution supply lines are copper. There are no lead service lines present in the facility. Water service line from the wellhead is 2" copper, continuing in to the water treatment equipment room where the service line is changed to NSF/PVC fittings and piping. Once the water has completed the cycle through the filtering and softening equipment, the service line then reverts back to copper fittings and supply distribution piping. The distribution piping is brought in to the nursing facility through the attic and continues down the center of the 1st floor corridors. Branch lines are tapped off the distribution piping and brought in overhead, dropping in to the interior walls leading to the plumbing fixtures in all locations.

All plumbing fixtures throughout the facility are commercial grade chrome-plated brass or metal fixtures (i.e., Symmons, Chicago, T&S Brass, etc.) Any potential lead content in the fixtures is unknown. No particular specification could be located or determined as to the type solder used in copper piping fittings and solder connections, but most likely to be either 50% tin and 50% lead, or 95% tin and 5% antimony.

02/04/2017

**NARRATIVE OF ST. MARY'S ALZHEIMER'S CENTER**  
**LEAD MAPPING AND SAMPLE MONITORING POINTS - PLUMBING** (continued)

The sample point locations for obtaining lead and/or copper samples are as follows:

Room 1  
Room 11  
Room 17  
Public Restroom (located on 1st floor of Administrative building off of foyer)  
Employee Lounge  
West Nourishment Room  
Kitchen Prep Sink  
Drinking Fountain (next to Electrical Room in Nursing Facility on 1st floor)  
Room 203  
Room 30

Please feel free to contact us if there are questions or additional information is required.

Steve Walker can be reached at (330)-549-9259 (facility number) or by cell phone at (330)-503-7642.

Paul R. Warren  
Windsor House, Inc.  
101 W. Liberty St.  
Girard, Ohio 44420  
PH: 330-545-1550 (ext. 9940)  
FX: 330-545-2444  
CL: 330-550-9331  
pwarren@windsorhouseinc.com