

Ohio EPA
Division of Drinking and Ground Waters (DDAGW)

MAPPING

Please see the attached map of the land parcel and building outline. The map identifies the major streets, landmarks and bodies of water utilized for lead and copper sampling.

BUILDINGS SERVED

Lead service line information from former operators Howard Beavers and Lyman Dresbach Jr. indicated no lead service lines. The 1992 – 1993 Sewer Separation project further confirmed no lead service lines. I personally observed and inspected all copper lines during the project. I confirm that all service lines are copper or plastic to the curb stop.

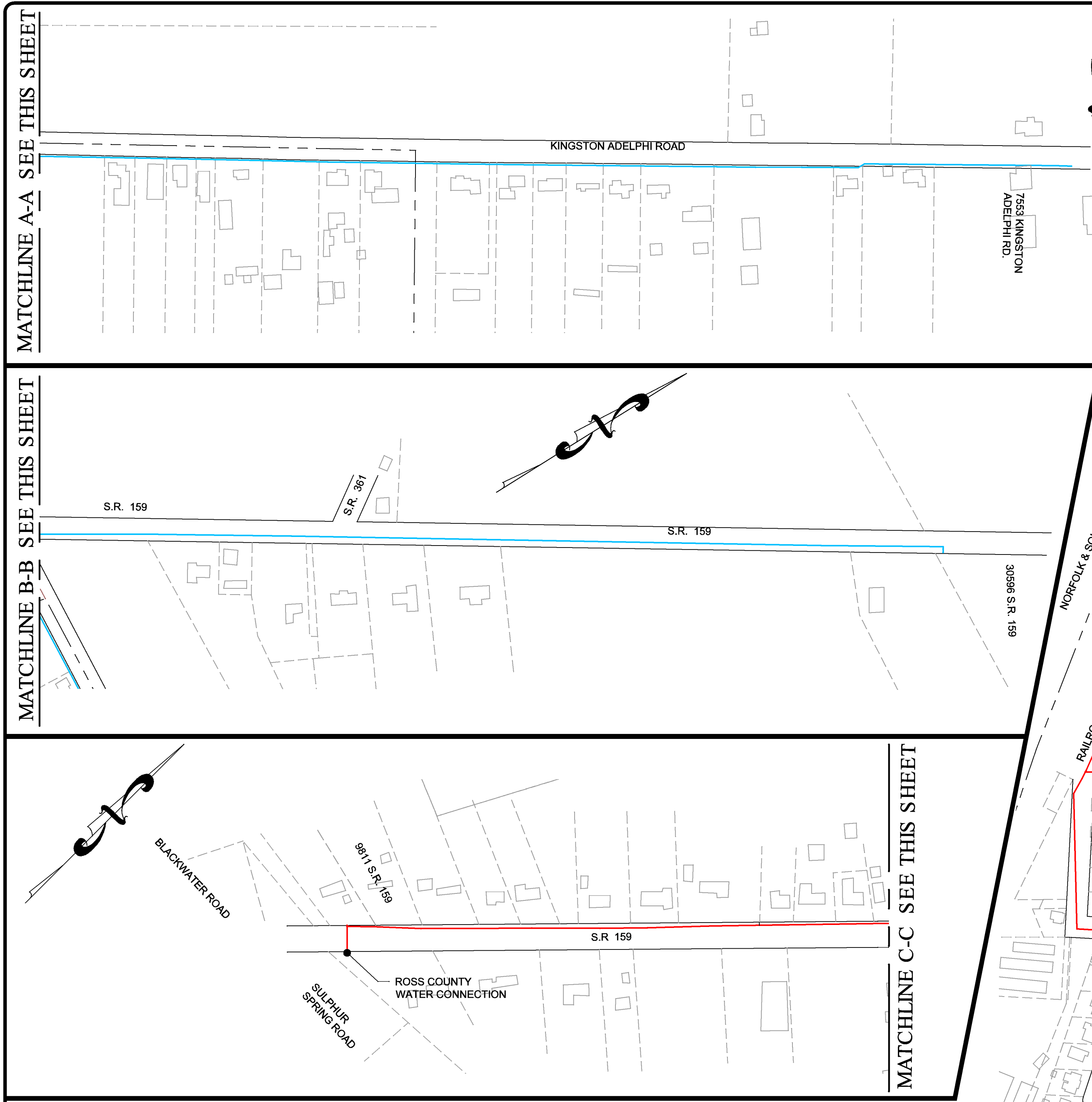
SAMPLE MONITORING ID SHEET

Please see the attached Sample Monitoring Point ID sheet. No Tier 1 or 2 sample sites, only Tier 3 sample sites exist. The spreadsheet contains lead and copper sample sites, including contact information for the owner and occupant of each sampling site. Current lead samples are from 2015. Sample updates will occur upon completion of the 2017 Water Main Replacement project.

Please do not hesitate to call me with any questions or concerns,

Rick Leadingham

740-655-2217



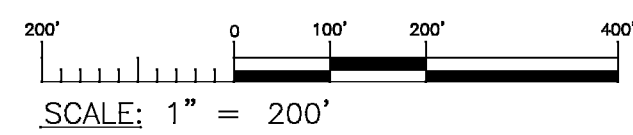
MATCHLINE A-A SEE THIS SHEET

MATCHLINE B-B SEE THIS SHEET

MATCHLINE C-C SEE THIS SHEET

LEGEND:

- WATERLINE - PVC
- WATERLINE - CEMENT ASBESTOS



MAPPING PRESENTED DEPICTS INFORMATION AND DATA PROVIDED BY THE VILLAGE OF KINGSTON, FEBRUARY 2017.



MATCHLINE C-C SEE THIS SHEET

MATCHLINE B-B SEE THIS SHEET

MATCHLINE A-A SEE THIS SHEET

148 N. HIGH STREET, GAHANNA, OHIO 43230
PHONE: 614-471-7210, FAX: 614-471-7220
WWW.GEOENGINEERS.COM

--

--

VILLAGE OF KINGSTON
LEAD SERVICE LINE & FIXTURE
MAPPING PROJECT

CLIENT: VILLAGE OF KINGSTON
ADDRESS: 20 E. PICKAWAY STREET, KINGSTON, OH
LOCATION: ROSS COUNTY, OHIO

SCALE: AS NOTED		
DESIGN BY: —	DWN BY: AGD	
CHK'D BY: —	APPV'D BY: —	
COPYRIGHT © 2017 GEO ENGINEERS, INC.		

WATER MAIN MATERIALS

SHT#
1 OF 1

PROJ# 17201 3/6/2017