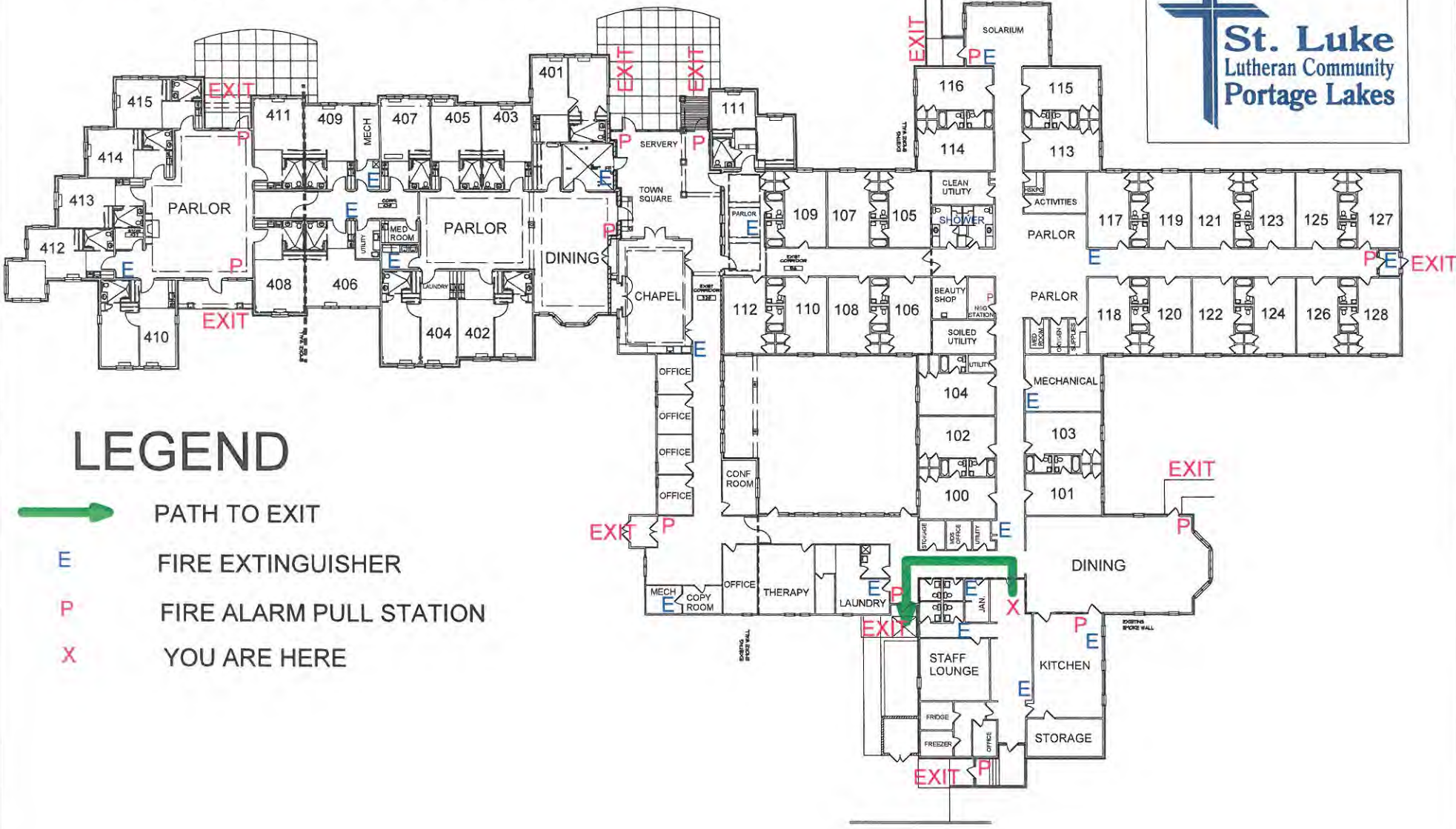
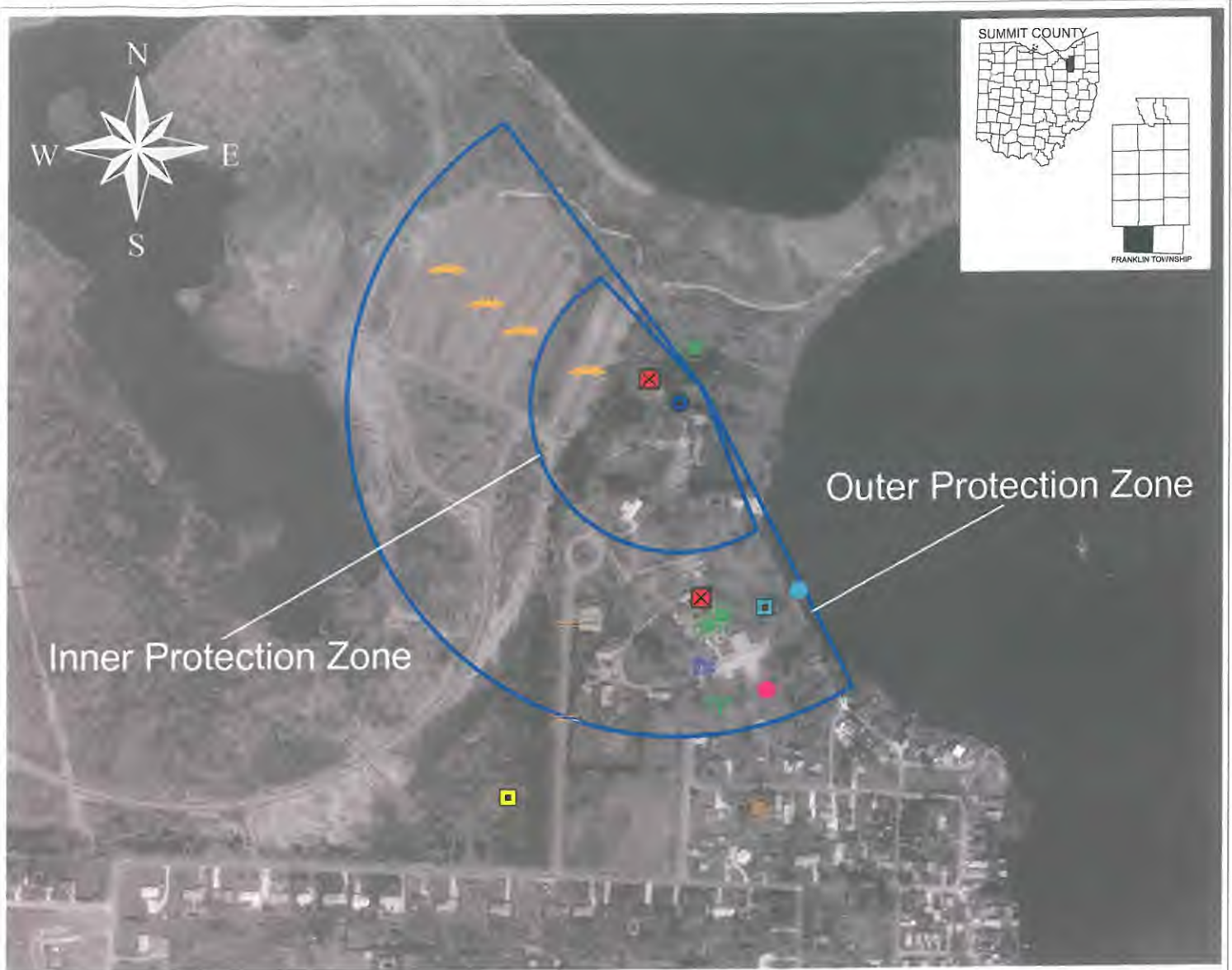


Employee Entrance Exit Plan



LEGEND

- PATH TO EXIT
- E** FIRE EXTINGUISHER
- P** FIRE ALARM PULL STATION
- X** YOU ARE HERE



Legend

200 0 200 400 Feet



- Public Water System Well
- Above Ground Storage Tank
- Floor Drain (to septic tank/well)
- Gas Line
- Lake
- Leaking Underground Tank
- Dumpster
- Septic System (leachfield)
- Storm Drain
- Wastewater Treatment Plant
- Utility Shed
- Parking Areas
- Road

Information Used to Develop Protection Area

Number of Wells = 1
 Pumping Rate = 9,120 GPD
 Aquifer Thickness = 10 Feet
 Aquifer Porosity = 0.1
 Hydrogeologic Setting = Sandstone



September 10, 2003





Figure 1. Drinking Water Source Protection Area and Potential Contaminant Sources, Healthhaven Nursing Facility, Public Water System #7708812.



400 0 400 800 Feet



LEGEND

-  Public Water Well, Franklin Park Civic Center
-  Protection Area, Franklin Park Civic Center
-  Public Water Well, Healthhaven Nursing Facility
-  Protection Area, Healthhaven Nursing Facility

September 10, 2003

Figure 2. Overlapping Drinking Water Source Protection Areas.

St. Luke Lutheran Community – Portage Lakes

PWS # 7708812

St. Luke – Portage Lakes is a Skilled Nursing facility and an Assisted Living facility located at 615 Latham Lane Akron, Ohio 44319.

All of the water lines in our facility are copper lines – the lines from the water tank to our building are also copper .

Please find attached a floor plan of our facility and also maps of our drinking water source protection area – it is listed as Healthaven Nursing facility which we were formerly until St. Luke Lutheran purchased our building in 2004 .