



Village of Strasburg
Public Water System Lead (Pb) Components
 PWSID# 7901212
 Prepared March 2017

To comply with Section 6109.21 of the Ohio Revised Code, enacted in September 2016, the Village of Strasburg in Tuscarawas County, Ohio has created the following report and attached map to identify known and potential components of water service lines that contain lead (Pb).

The following information and attached map do not verify the presence of lead in any of the plumbing components or structures shown. The information and map only show the probable or possible locations based on the year that structures were built, or by the year that the plumbing component was installed.

RCAP staff and the Village of Strasburg Water Department met on February 22nd, 2016 to review a map of the service area. No applicable historical maintenance and operation records or tap cards were available to identify any lead service line (LSL) locations. Strasburg does have as-builts of improvement projects that have taken place in the last 30-40 years that indicate the material used was not lead.

Public and Private LSL Probability

The Village owns and maintains service lines from the water distribution mains up to the curb stops for each water customer. The remainder of each service line from the curb stop to the building is the responsibility of the property owner.

The tables below provide information about the possibility of lead service lines and use of leaded plumbing materials to the customers Strasburg serves. The year the structure was built, the year plumbing material was installed, or staff knowledge determines which category it falls into.

Public LSL Probability		
Value	Public Lines #	% of System
Moderate (≤ 1920)	34	3.21%
Low (1921-1950)	102	9.64%
Non-Lead (1951-2017)	922	87.15%

Private LSL Probability		
Value	Public Lines #	% of System
Moderate (≤ 1920)	34	3.21%
Low (1921-1950)	102	9.64%
Non-Lead (1951-2017)	922	87.15%



We could not definitively say that all active service lines in Strasburg are not lead. Pre-1920 it was common to install LSLs. Current Strasburg Water Department staff has never observed or replaced lead lines of any type in the distribution system. The excavated service lines for structures built pre-1920 have all been galvanized or copper to date. A service connection fell into the moderate category only if the structure was built before 1920, the main line installation date is unknown or pre-1920, and if both the service line and the attached main line has not been replaced.

If a structure was built from 1921-1950 it fell into the low probability category. We could not definitively say that LSLs were not installed during this time period, but all excavated service lines for structures built from 1921-1950 have all been galvanized or copper to date.

Since 1950 the Village has used solderless mechanical joints in all installation of service and main lines.

Distribution System

Within the distribution system, none of the pipes themselves are known to contain any lead, however, there are joints, valves, and fittings within the system that may contain lead. Main lines installed pre-1950, before it was standard practice to use mechanical compression joints, may have some lead components.

The Village of Strasburg has approximately 19.54 miles of water main lines. The table below shows which lines may or may not have solder, valves, or fittings that contain lead.

Probability of Lead Solder and Fittings in Water Main		
Lead in Water Main Materials	Feet of Pipe	% of System
Lead Probable (Installed pre-1950s)	9,516.31	9.22%
Lead Improbable (Installed post 1950)	93,680.70	90.78%

Indoor Plumbing

All water meters in Strasburg are less than 15 years old. Meters manufactured before 2014 may contain up to 8% lead. Meters installed after 2014 will have less than 0.25% lead.

Buildings in Ohio built prior to 1998 or that use plumbing material or solder manufactured before 1998 may have materials with greater than 8% lead and are at a higher risk of contributing lead to the drinking water than materials manufactured after 1998.

Buildings built and plumbing materials manufactured after 2014 were required to have less than 0.25% lead by weight and have the lowest risk for contributing lead to the drinking water. It should be noted however that, although prohibited, some use of leaded solder or leaded components may have occurred after the prohibitions became effective.

Customer Self-Reporting

The information on this map regarding privately owned service lines is based on the limited information from the water system staff and Tuscarawas County building and parcel data. Property owners are



encouraged to inspect their own service lines entering the building if these are in anyway exposed, and notify the Village of Strasburg Water Department if they have determined whether or not a lead service line exists. Please contact the Water Billing Clerk by calling (330) 878-7710. A representative from the water department will contact you to confirm and update this information for the next map release.

Contacts and Resources

If you have questions about known and potential lead components within the Village of Strasburg Public Water System, please contact:

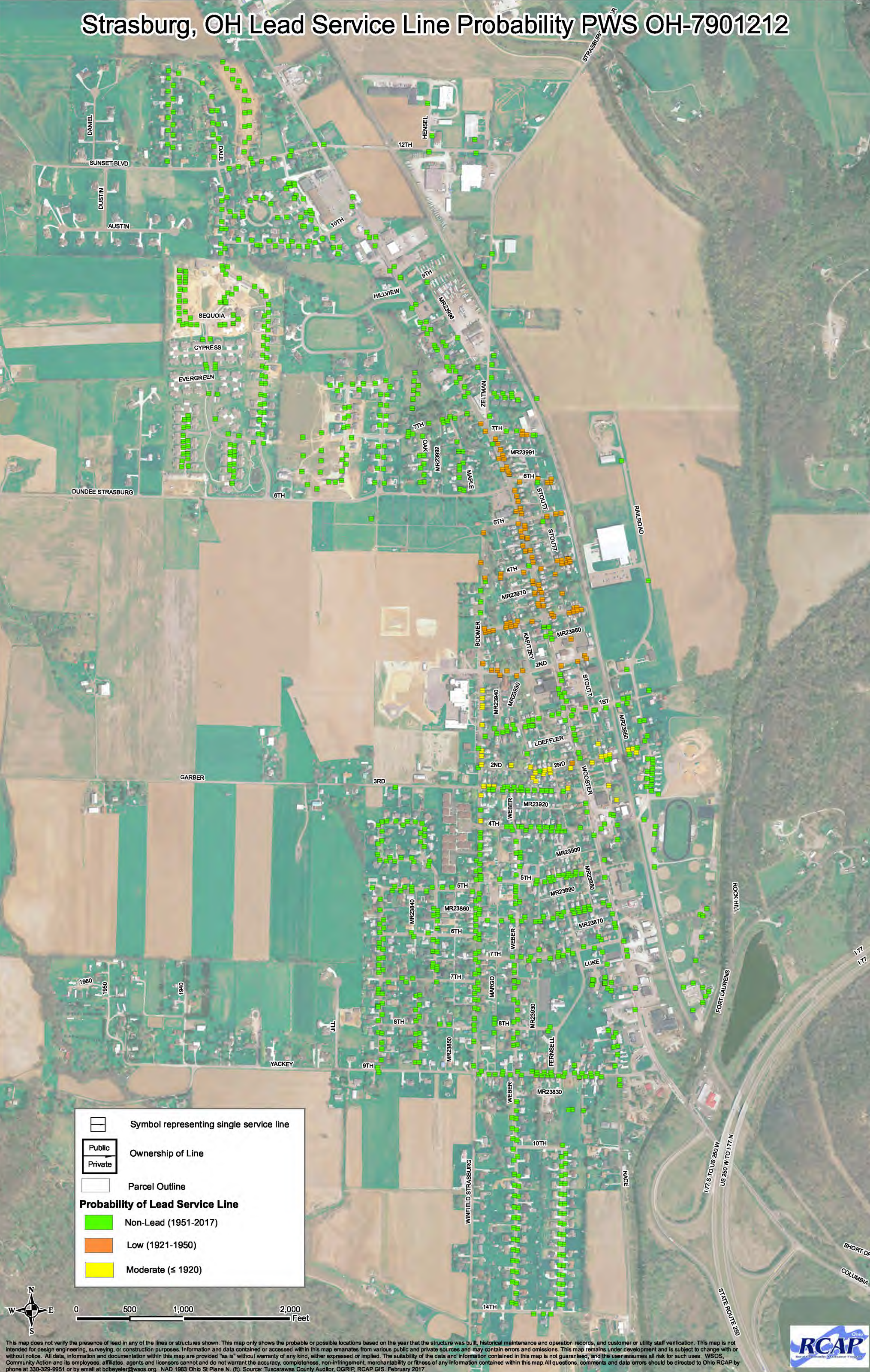
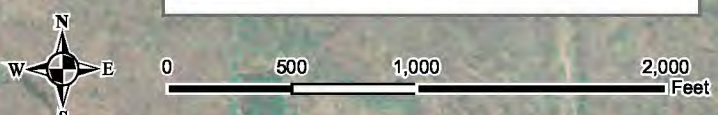
Strasburg Water Department
358 5th Street SW
Strasburg, OH 44680
(330) 878-7710

For more information about lead service lines and their removal, we recommend the following resources:

- **The Lead Service Line Replacement Collaborative**
<http://www.lslr-collaborative.org/resources-for-concerned-consumers.html>
- **Ohio EPA 'Learn About Lead' page** <http://epa.ohio.gov/pic/lead.aspx>
- **US EPA Lead in Drinking Water Information Page**
<https://www.epa.gov/ground-water-and-drinking-water/basic-information-about-lead-drinking-water>

Strasburg, OH Lead Service Line Probability PWS OH-7901212

	Symbol representing single service line
	Ownership of Line
	Parcel Outline
Probability of Lead Service Line	
	Non-Lead (1951-2017)
	Low (1921-1950)
	Moderate (≤ 1920)



This map does not verify the presence of lead in any of the lines or structures shown. This map only shows the probable or possible locations based on the year that the structure was built, historical maintenance and operation records, and customer or utility staff verification. This map is not intended for design engineering, surveying, or construction purposes. Information and data contained or accessed within this map emanates from various public and private sources and may contain errors and omissions. This map remains under development and is subject to change with or without notice. All data, information and documentation within this map are provided "as is" without warranty of any kind, either expressed or implied. The suitability of the data and information contained in this map is not guaranteed, and the user assumes all risk for such uses. WSOS, Community Action and its employees, affiliates, agents and licensors cannot and do not warrant the accuracy, completeness, non-infringement, merchantability or fitness of any information contained within this map. All questions, comments and data errors should be directed to Ohio RCAP by phone at 330-329-9951 or by email at bdbeyeler@wsos.org. NAD 1983 Ohio State Plane N. (ft). Source: Tuscarawas County Auditor, OGRIP, RCAP GIS. February 2017

