

PMR APARTMENTS 2500

PWS ID# 7707312

2500 PINEBROOK TRC

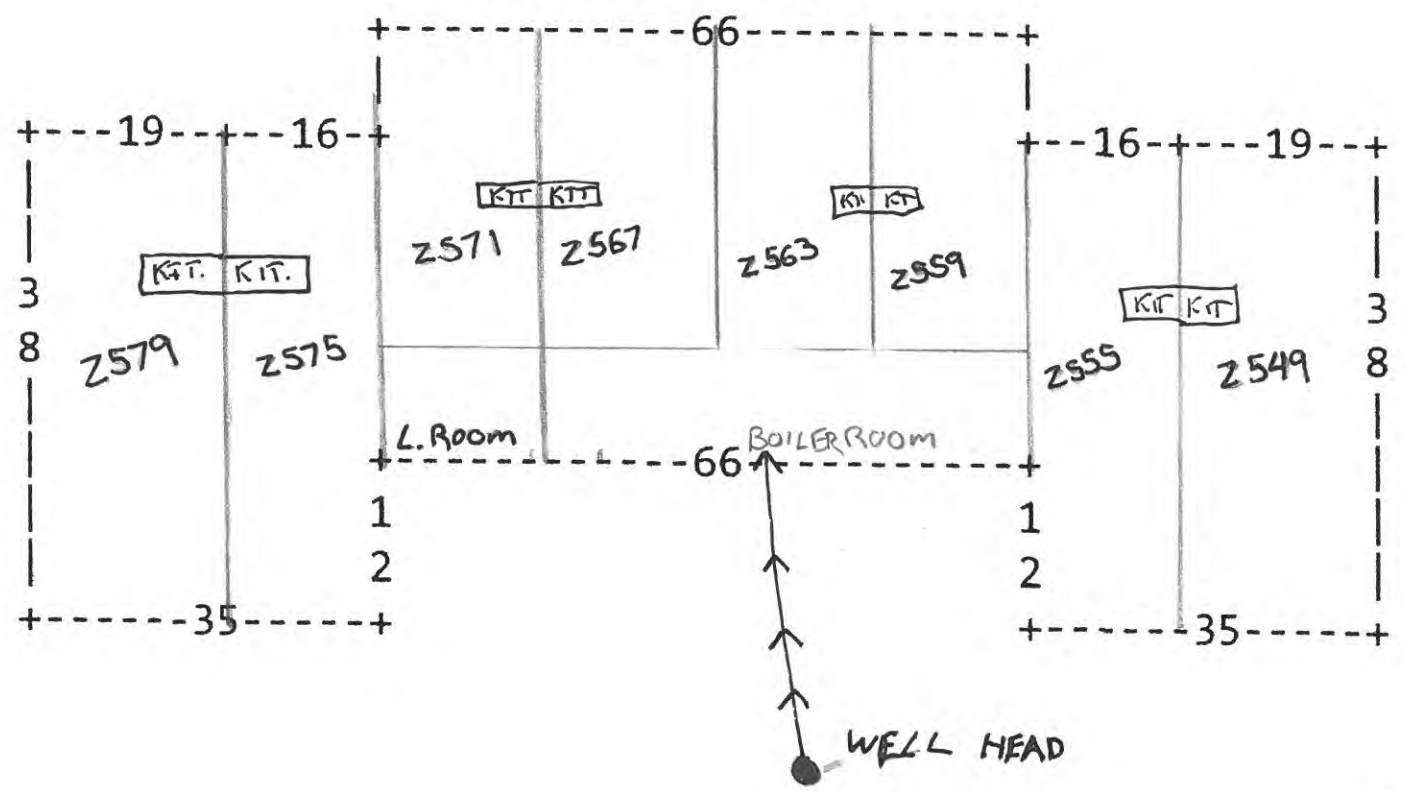
NOTES:

LL

1- 2" PVC WATER LINE FROM WELL HEAD TO BOILER ROOM.

2- 3/4" COPPER FROM BOILER TO EACH APARTMENT.

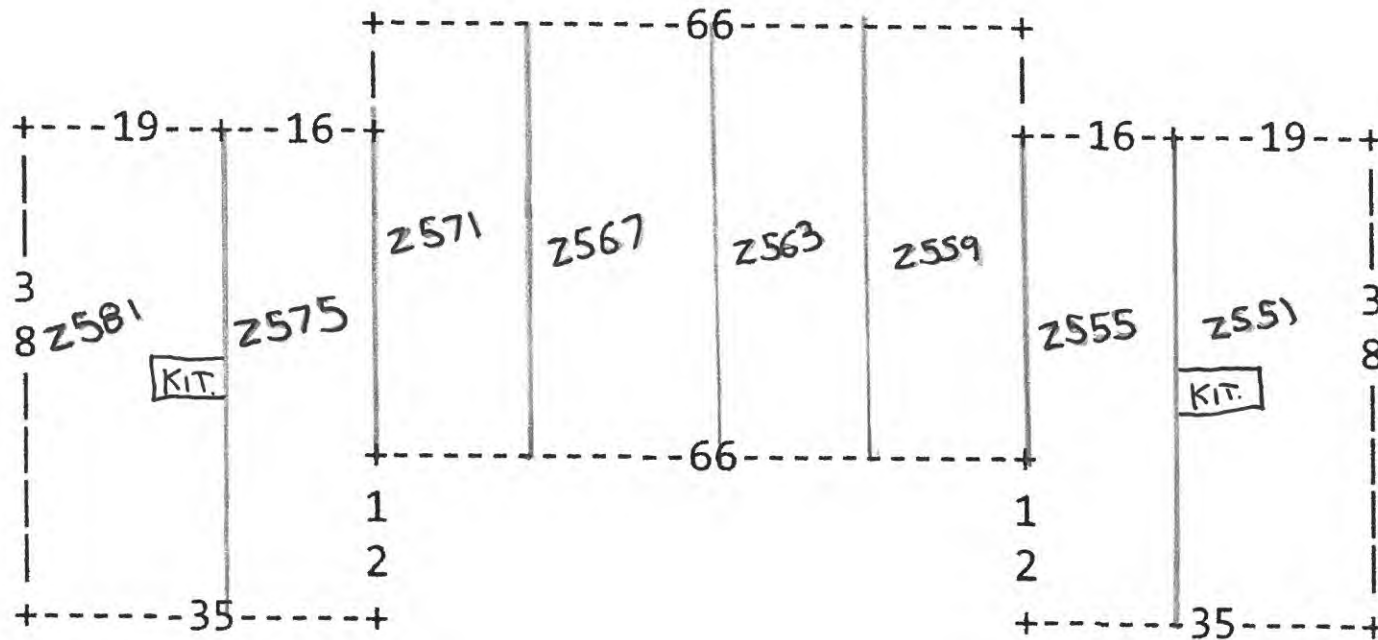
3- 3/4" COPPER ENTERS EACH APARTMENT IN THE KITCHEN.



3-8-17

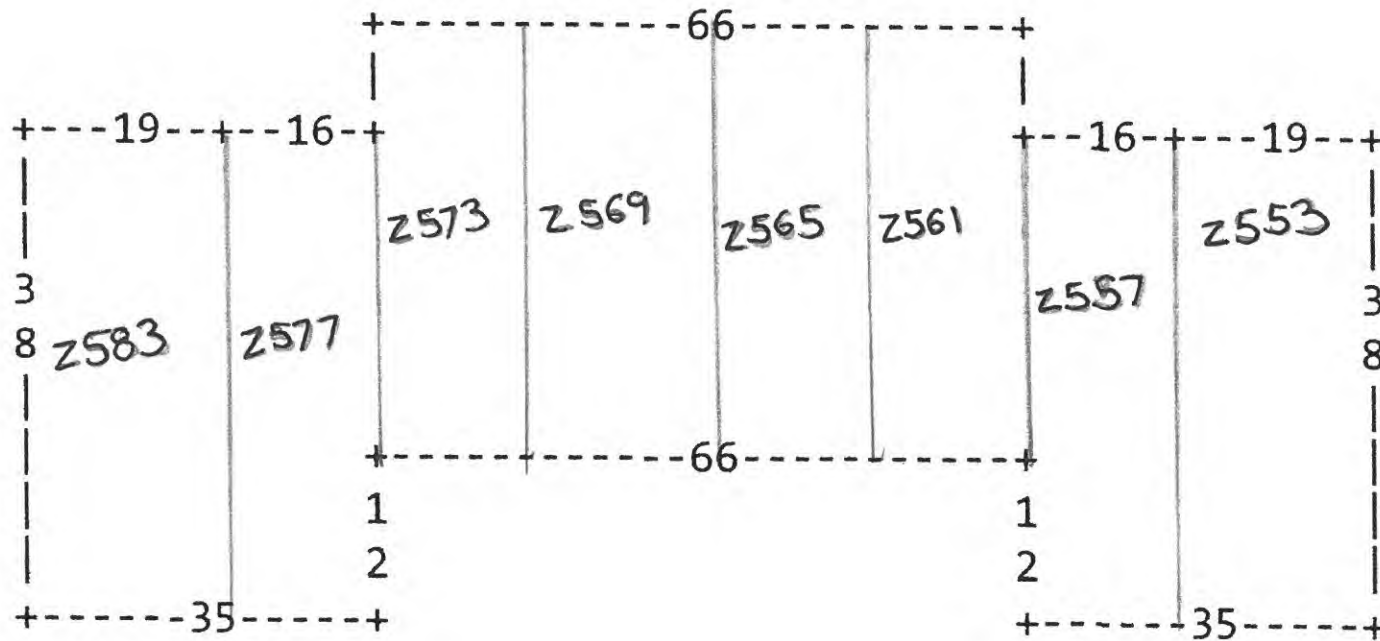
2500 PINEBROOK TRC

1st Floor



3-8-17

2500 PINEBROOK TRC  
2nd Floor



3-8-17

2300 Pinebrook

LL  
PWSID# 7707312

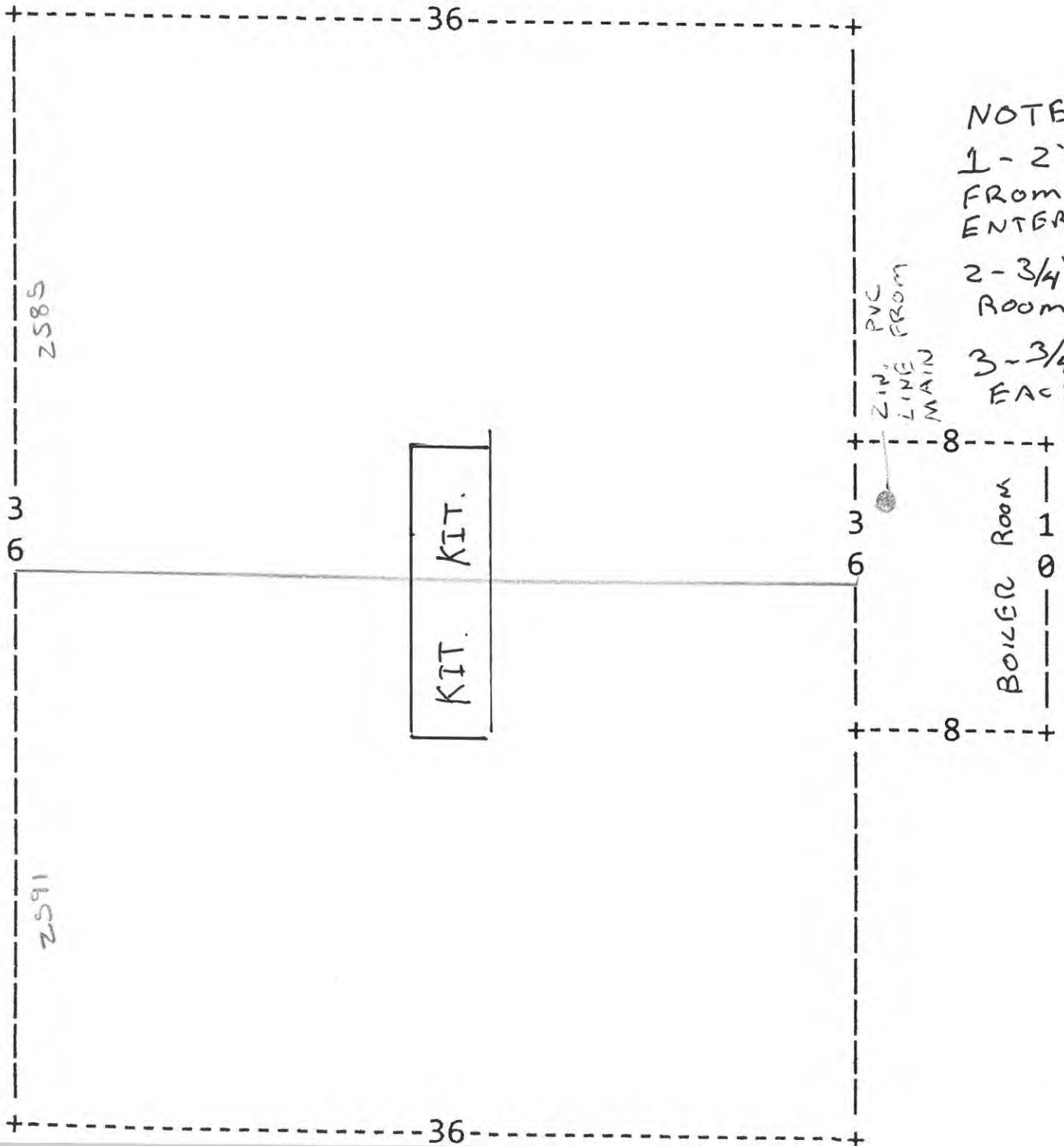
NOTES:

1 - 2" PVC WATER LINE  
FROM LARGE 2500 BLDG.  
ENTERS BOILER ROOM

2 - 3/4" COPPER FROM BOILER  
ROOM TO EACH APARTMENT.

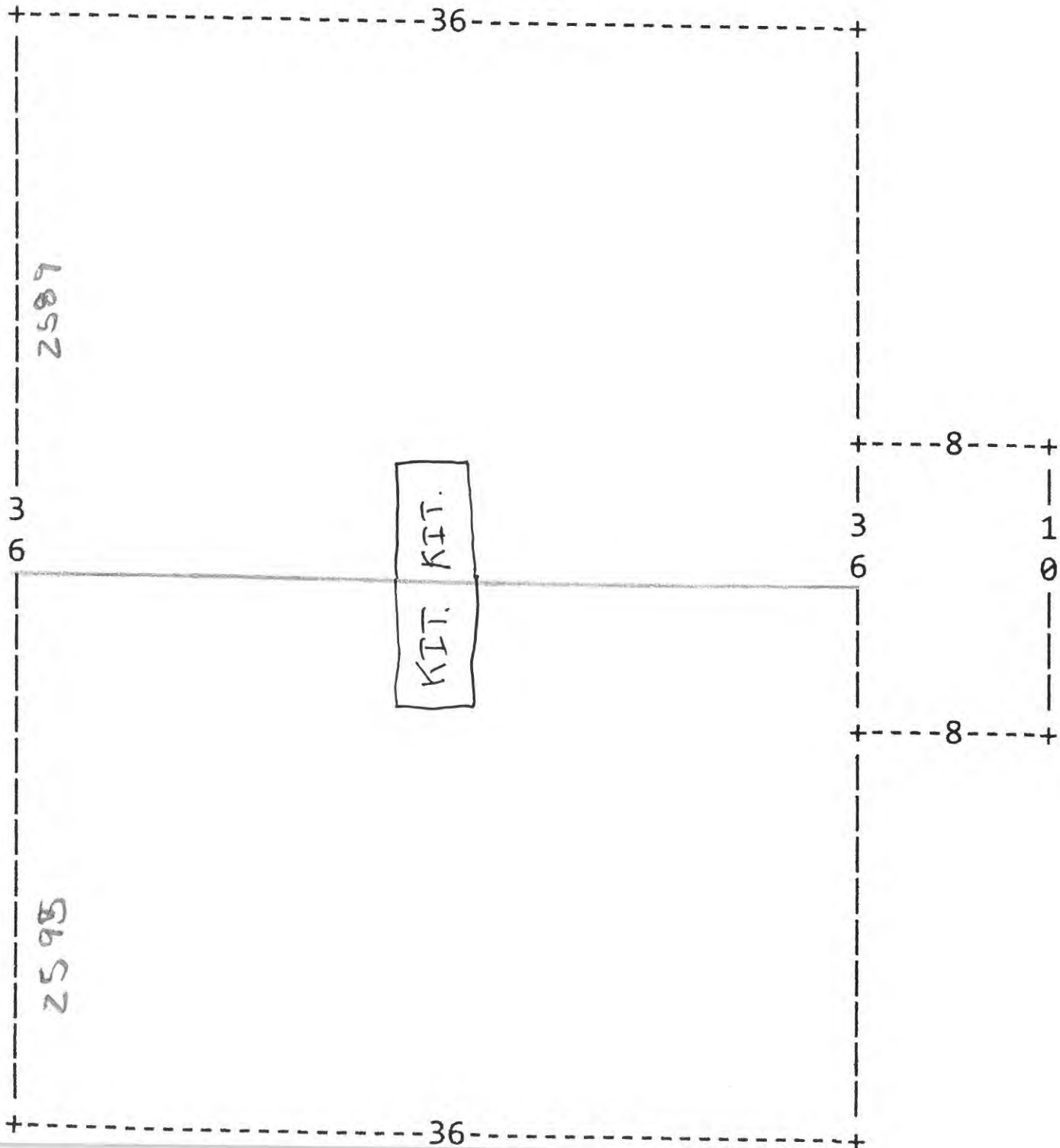
3 - 3/4" COPPER ENTERS  
EACH APARTMENT IN THE  
KITCHEN.

2 1/2" PVC  
LINE FROM  
MAIN



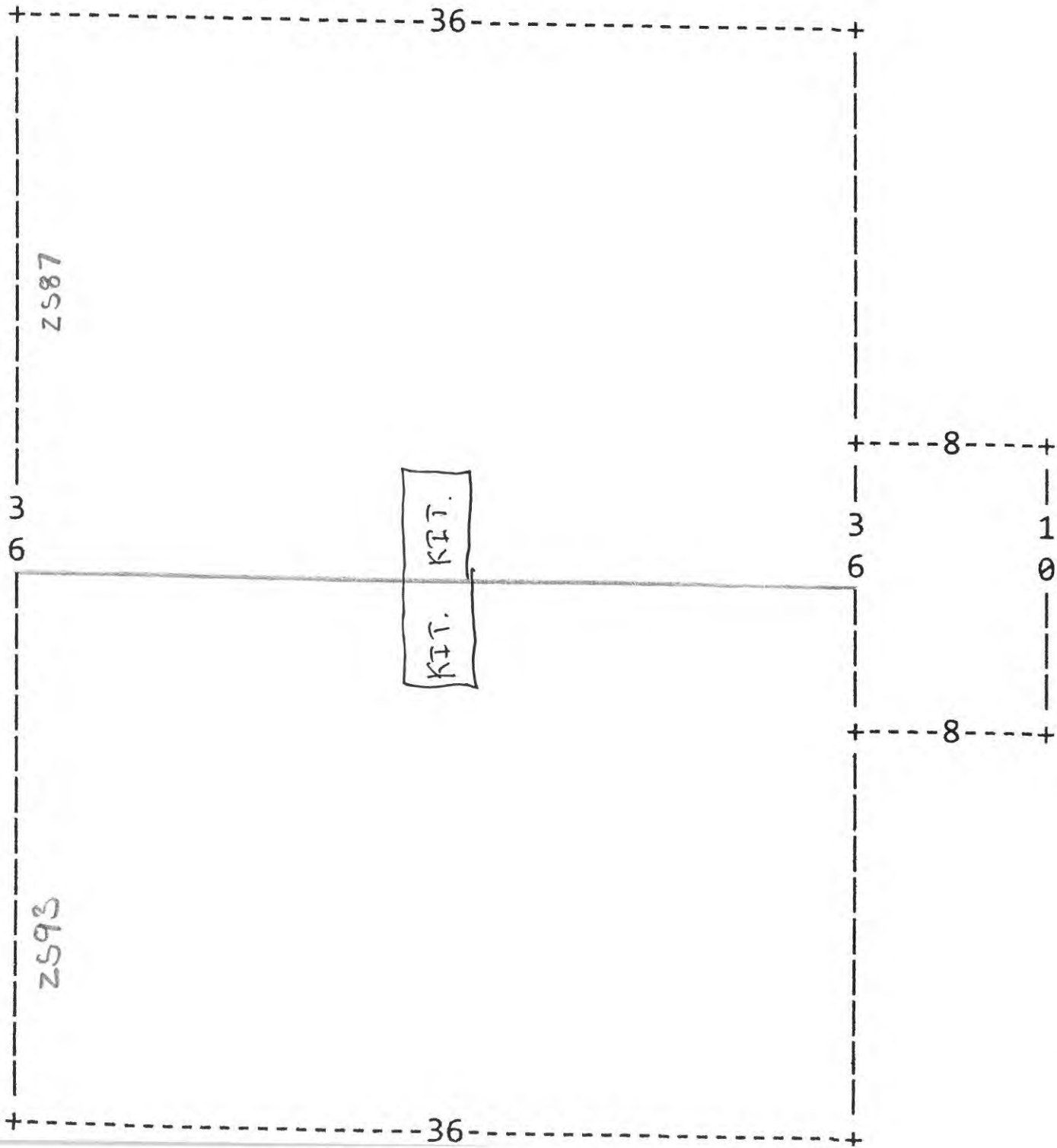
3-8-17

2300 Pinebrook  
2nd Floor



3-8-17

2300 Pinebrook  
1<sup>st</sup> Floor



3-8-17

PMK APARTMENT 2300 (2300 BLDG)

PWS IO# 7707312

2300 Pinebrook TRC

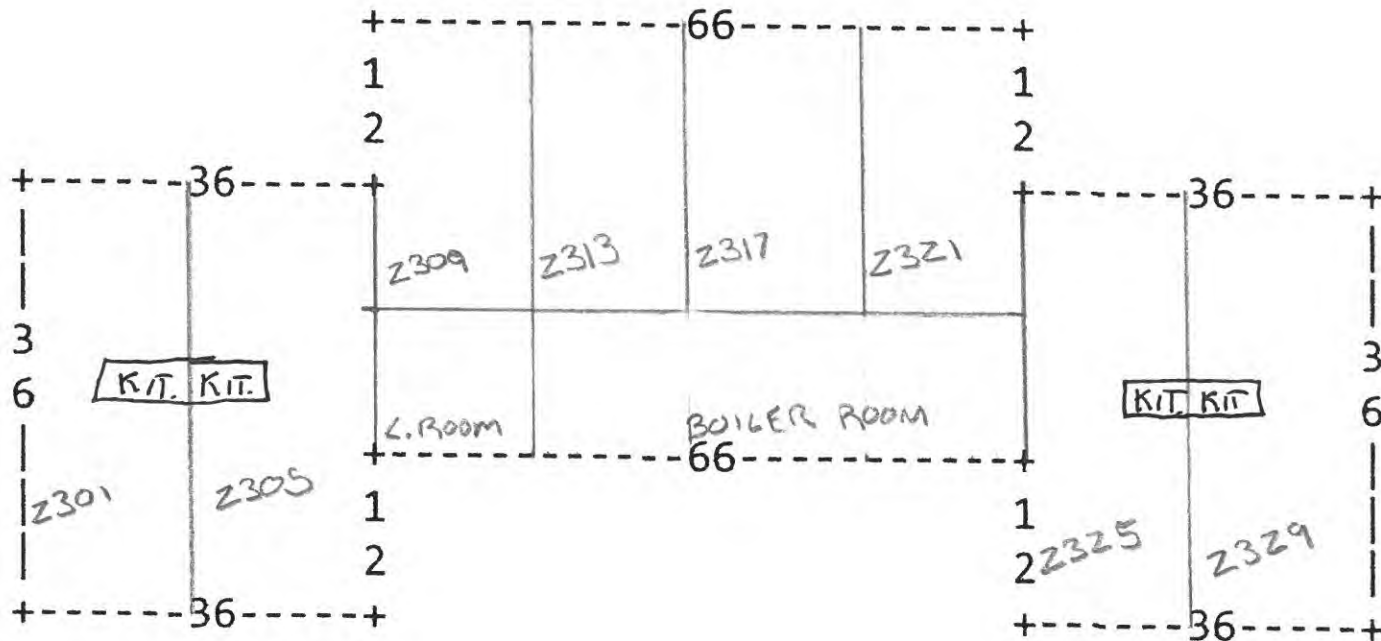
LL

NOTES:

1- 2" PVC WATER LINE FROM 2300 BLDG.  
ENTERS BOILER ROOM.

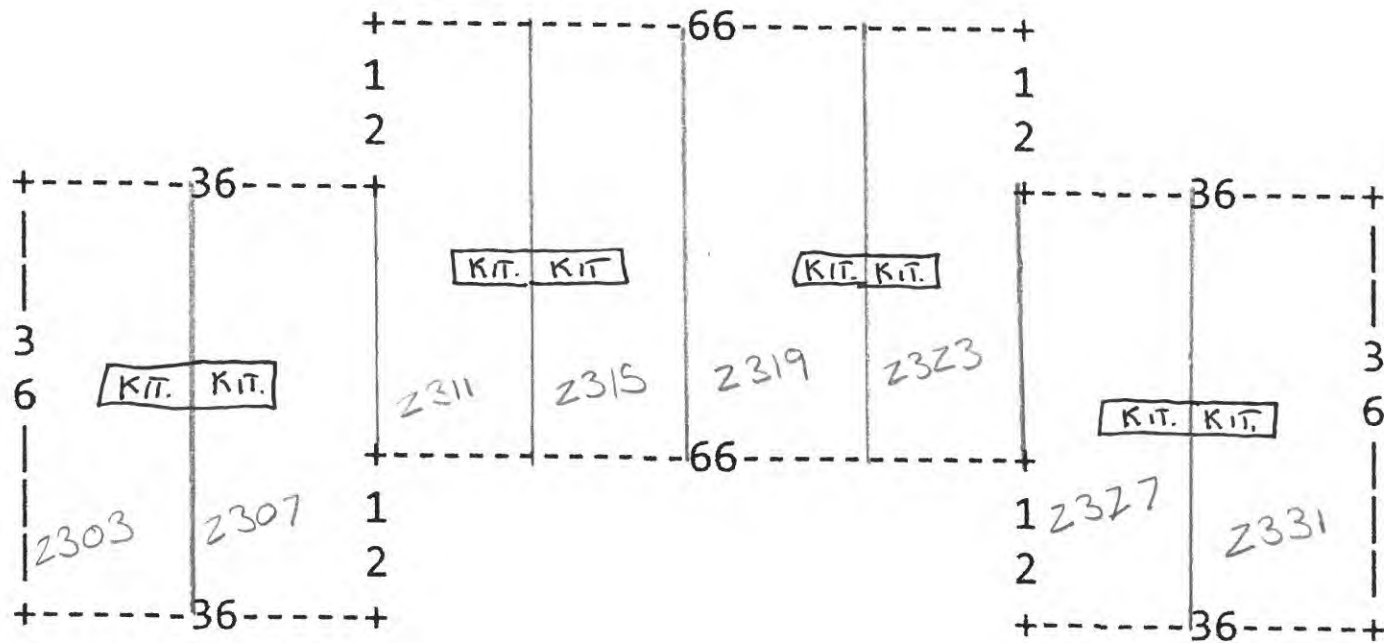
2- 3/4" COPPER FROM BOILER ROOM TO EACH  
APARTMENT.

3- 3/4" COPPER ENTERS EACH APARTMENT  
IN THE KITCHEN.



3-8-17

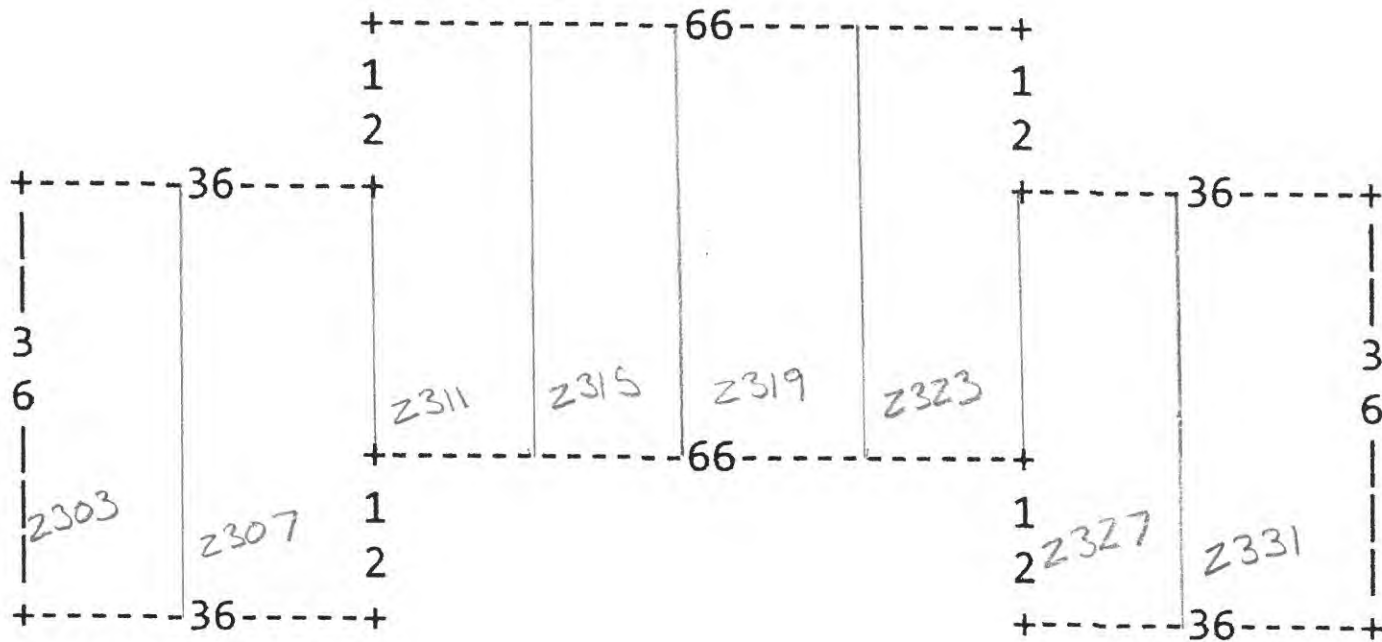
2300 Pinebrook TRC  
1st Floor



3-8-17



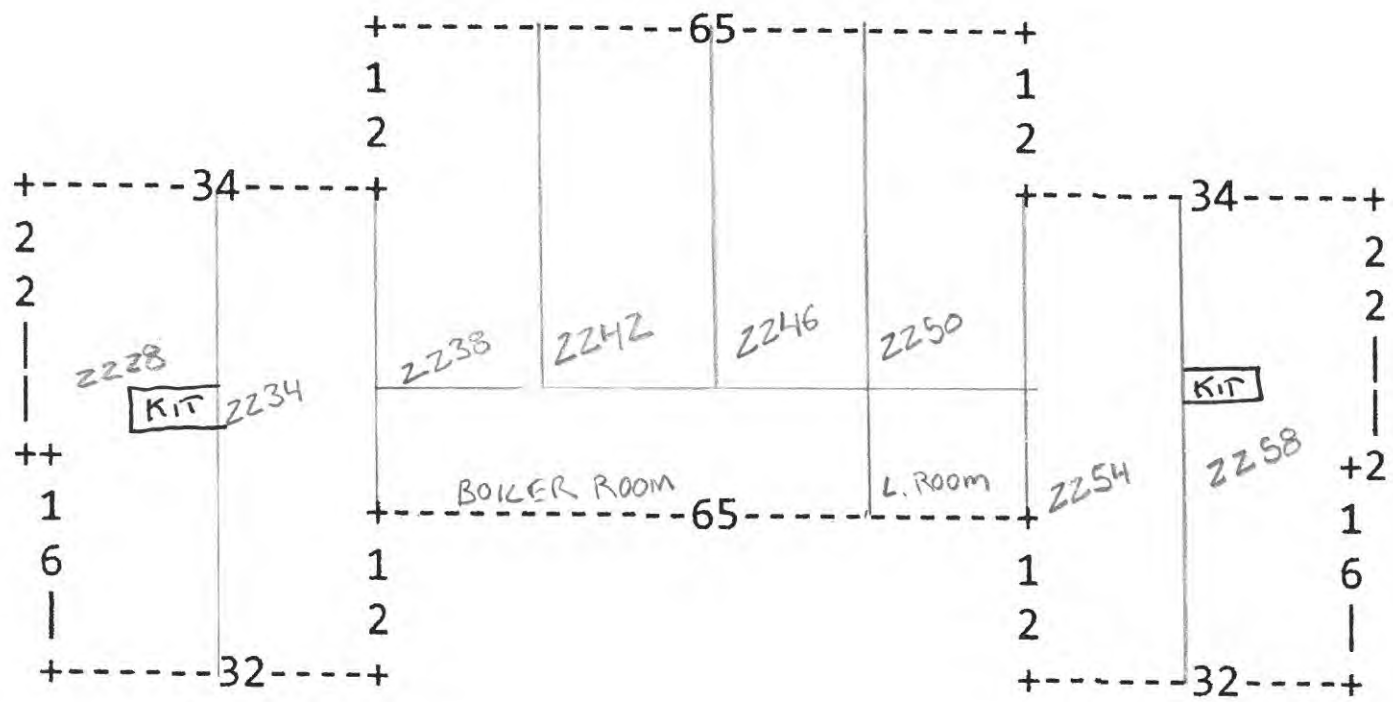
2300 Pinebrook TRC  
2nd Floor



3-8-17

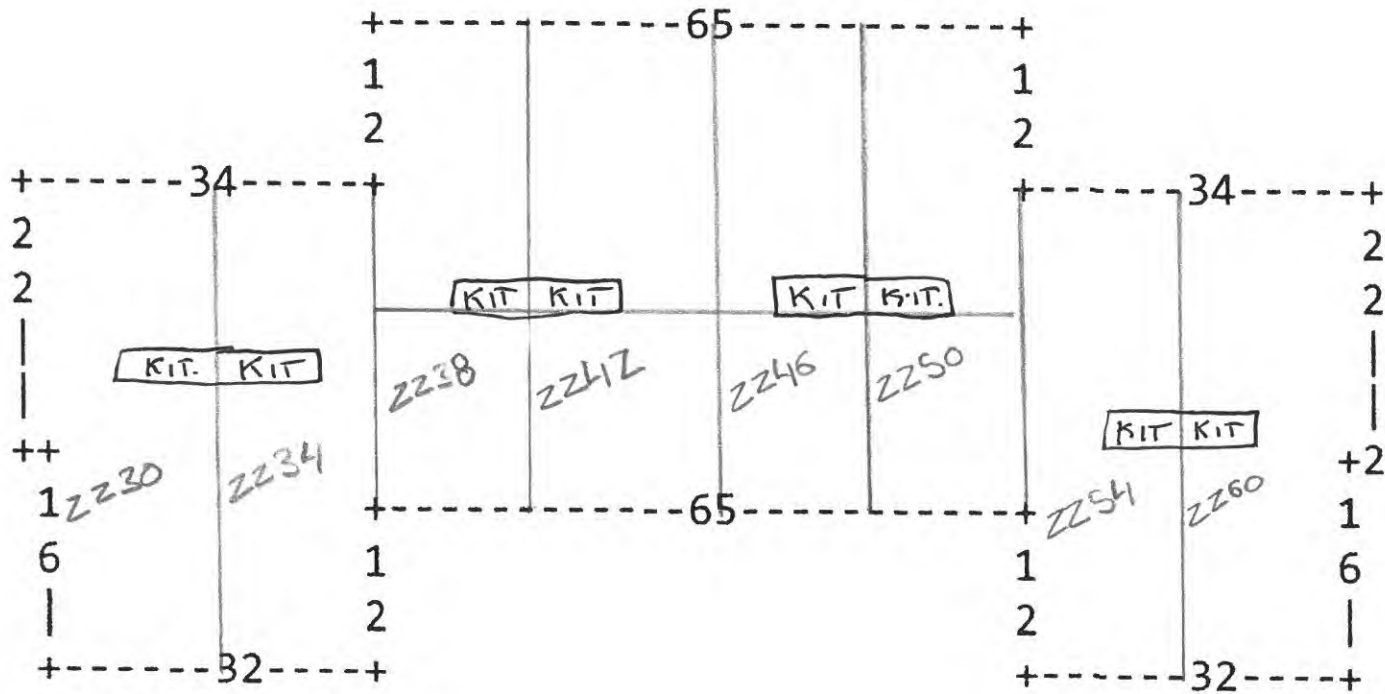
NOTES:

- 1- 2" PVC WATER LINE FROM 2500 BLDG. TO BOILER ROOM.
- 2- 3/4" COPPER FROM BOILER ROOM TO EACH APARTMENT
- 3- 3/4" COPPER ENTERS EACH APARTMENT IN THE KITCHEN.



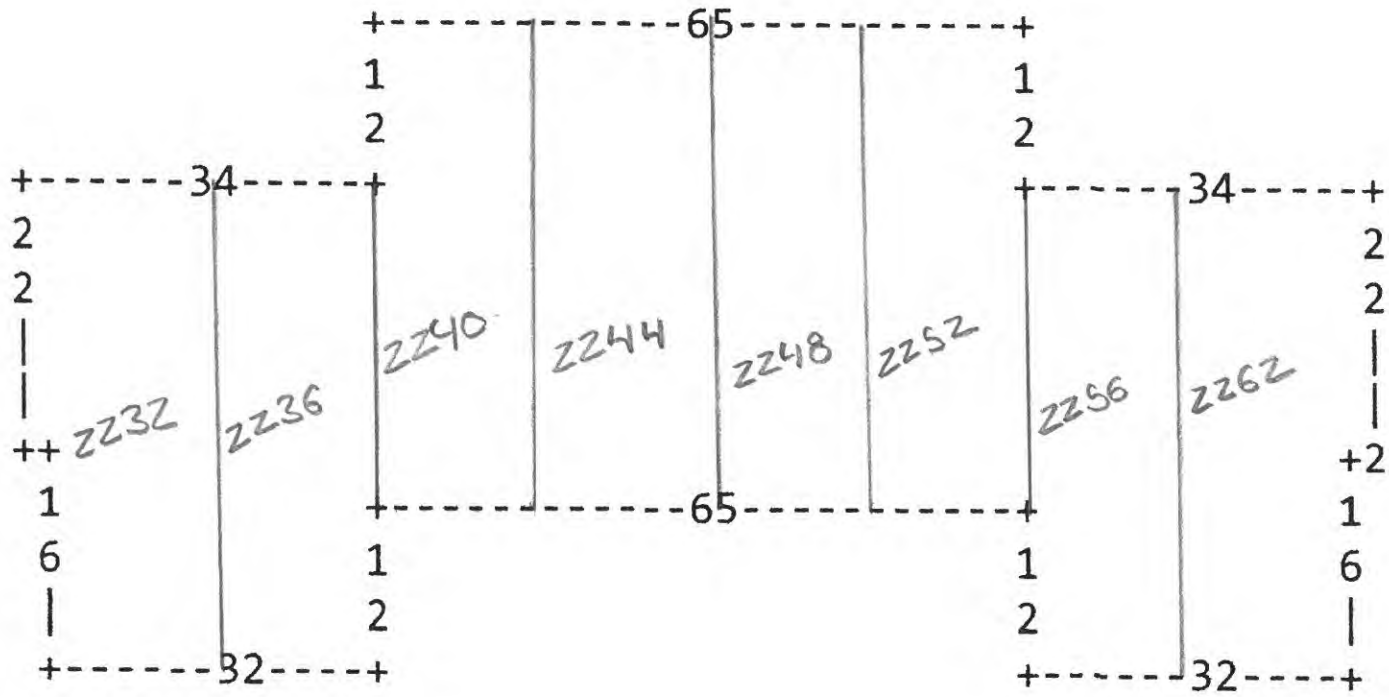
3-8-17

2200 Pinebrook Trc  
1<sup>st</sup> Floor



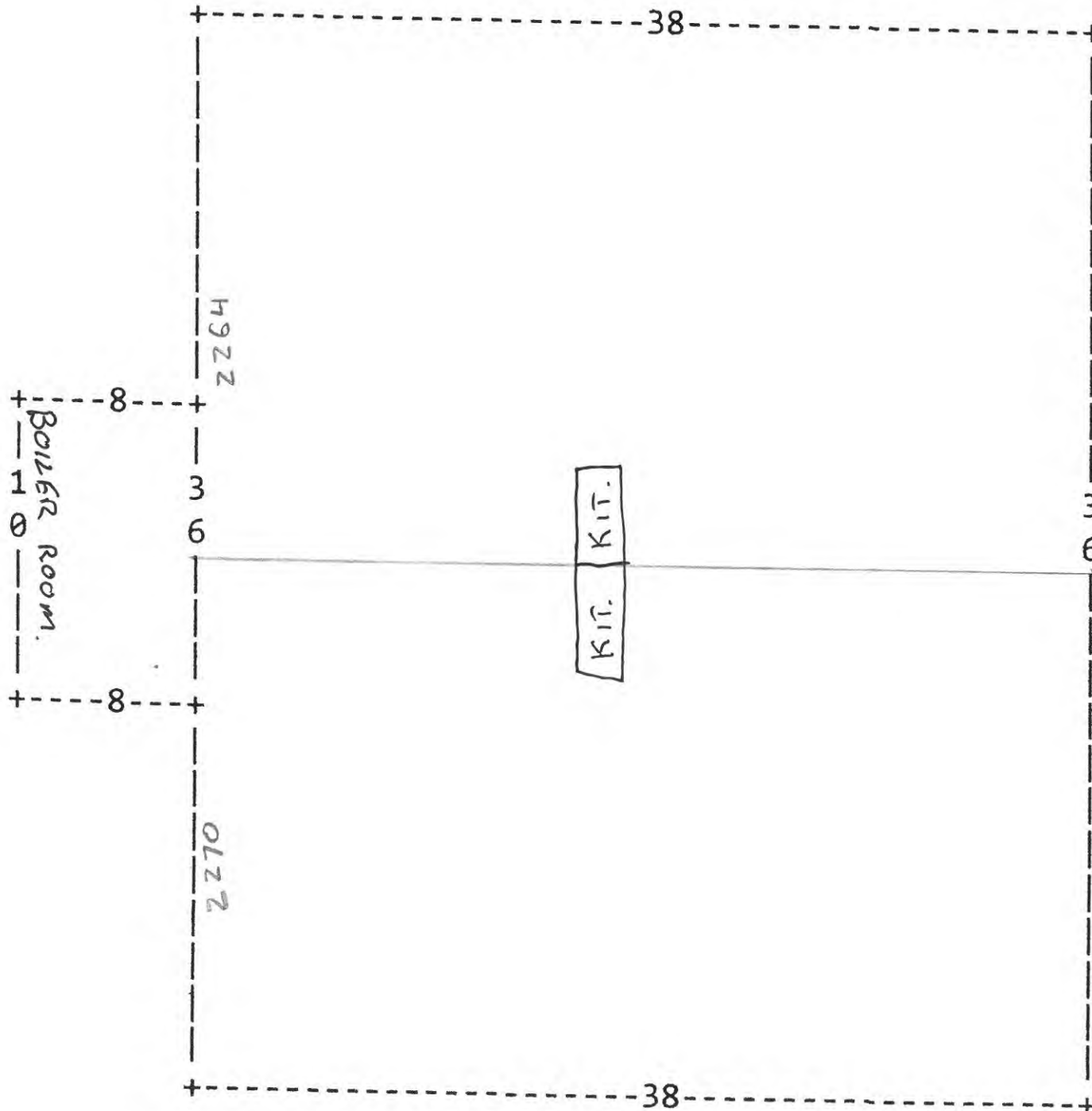
3-8-17

2200 Pinebrook Trl  
2nd floor



3-8-17

2200 Pinebrook TRL  
(SMALL BLDG)  
LL PWS ID# 7707312



NOTES:

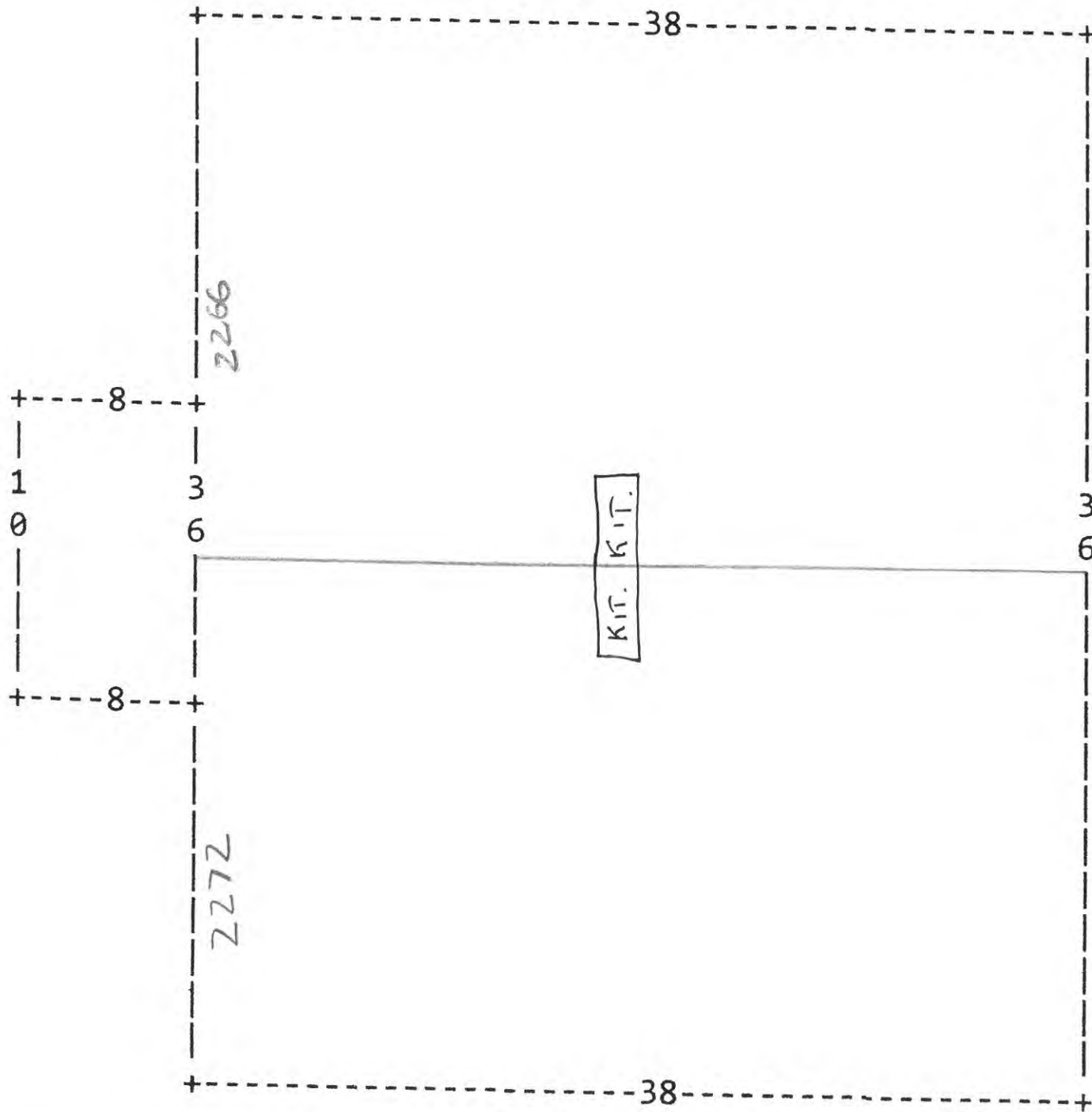
1- 2" PVC WATER  
LINE FROM 2500 BLDG.  
TO BOILER ROOM

2- 3/4" COPPER FROM  
BOILER ROOM TO  
EACH APT.

3- 3/4" COPPER ENTERS  
EACH APARTMENT IN  
THE KITCHEN.

3-8-17

2200 Pinebrook TRC  
First Floor



3-8-17

