

**VERIFICATION FORM FOR COMMUNITY PUBLIC WATER SYSTEMS
CLAIMING NO LEAD SERVICE LINES**

The owner or operator of all community public water systems must identify and map areas of their distribution system that are known or are likely to contain lead service lines. Systems must submit a copy of the applicable map to the Ohio Department of Health and the Ohio Department of Job and Family Services. Systems must also submit a report to the director containing at least both of the following: (1) The applicable map with narrative, and (2) A list of sampling locations used to collect samples as required by Ohio Revised Code (ORC) Section 6109.121 and any rules adopted thereunder, including contact information for the owner and occupant of each sampling site.

Should a water system determine no lead service lines exist in their distribution system, they must provide information stating they reviewed, at the minimum, historical permit records and local ordinances, distribution maintenance records and information pertaining to installation dates or materials for all services lines. This information must be verified below.

I HEREBY CERTIFY THAT THE FOLLOWING METHOD(S) WERE USED TO DETERMINE NO LEAD SERVICE LINES EXIST IN THIS WATER SYSTEM'S DISTRIBUTION SYSTEM, AS REQUIRED BY ORC 6109.121(F):

LEAD SERVICE LINE VERIFICATION
<p>This PWS states they have no lead service lines and has reviewed the following information (select one or more of the following):</p> <ul style="list-style-type: none"><input type="checkbox"/> Historical permit records and/or local ordinances<input type="checkbox"/> Distribution maintenance records (i.e. meter replacement, waterline break repairs)<input type="checkbox"/> Information pertaining to installation dates for all service lines (i.e. after 1986 when lead services lines were banned)<input type="checkbox"/> Service line material of all service lines is known (i.e. all service lines are known to be PVC)

Lucas Niceswanger

3/7/2017

Signature of Responsible Person Date

Lucas Niceswanger Village Administrator

Printed Name and Title of Responsible Person

PWS NAME: Stockport Village

PWS ID: OH5800912

COUNTY: Morgan

For Ohio EPA use only:

Date Verification Rec'd: _____

**Village of Stockport
P.O. Box 158
Stockport, Ohio
740-559-2411**

March 1, 2017

Ohio EPA Southeast District Office
2195 Front Street
Logan, Ohio 43138

Subject: Stockport PWS OH5800912
Verification Form for Community Public
Water Systems Claiming No Lead Service
Lines

To Whom It May Concern:

The Village of Stockport installed new service lines and meters to all 250 water taps in Stockport between 1998 and 1999.

The old copper service lines were removed and new PVC $\frac{3}{4}$ " cts pipe was installed at all existing taps. At that time, it was noticed, that **none** of the water lines from the meter to the customer were lead.

Sincerely,

A handwritten signature in blue ink, appearing to read 'Robert T. Grove', with a stylized flourish at the end.

Robert T. Grove
Operator of Record
Village of Stockport
WS2-1020039-00

Village of Stockport

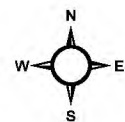
Public Water Infrastructure

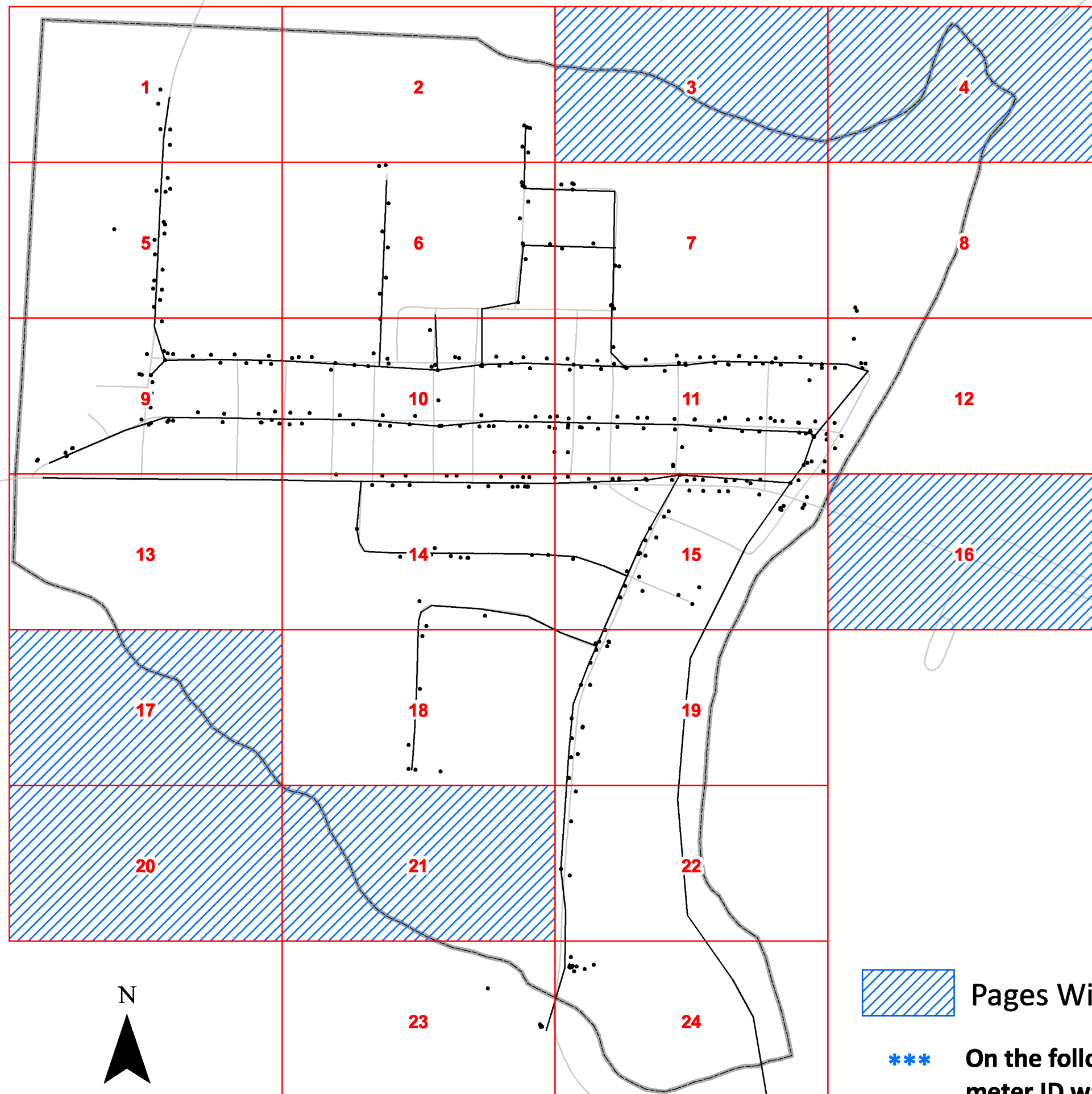
October 2010



Prepared by:

Kevin Manning - Mayor
Bret Allphin - BHHVRDD
Jason Pyles - BHHVRDD

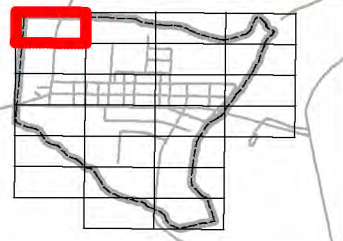




Street Index	
2ND:	11, 15
3RD:	11, 15
BROADWAY:	13, 14, 15
CLEVELAND:	6, 7, 10
COLUMBIA:	14, 18, 19
ELMWOOD:	6, 7
FRANKLIN:	2, 6, 10, 14
HANCOCK:	9, 10, 13
JACKSON:	15
JEFFERSON:	7, 11, 15
MADISON:	6, 10, 14
MAIN:	9, 10, 11, 12, 13
MARKET:	15, 19, 22, 24
MEADOW:	14, 18
NORTH:	9, 10, 11, 12
ODNR:	16
PEARL:	6, 10, 14
RIVER:	23, 24
RIVERVIEW:	1
ROSEWOOD:	6, 7
SOUTH:	14, 15
ST RT 266:	13, 15, 16
SYCAMORE:	4
TIEBER:	1, 5, 9, 13
UNION:	9, 13
WASHINGTON:	7, 11, 15
WATER:	11, 12, 15
WHITE:	10, 14
WINDSOR VILLAGE APARTMENTS:	9

 Pages With No Water Features

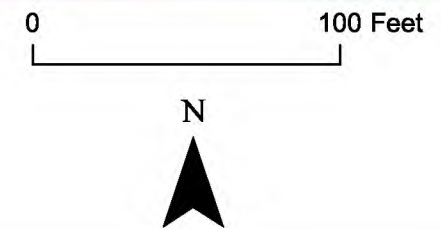
*** On the following pages, this symbol indicates that the meter ID was not available at time of collection.

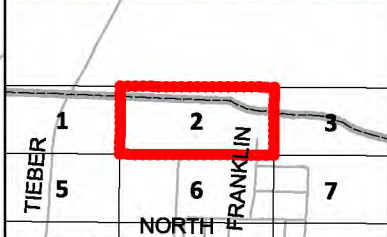
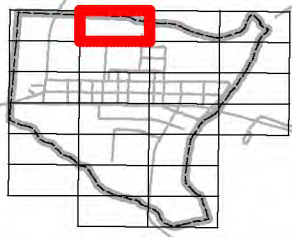


Village of Stockport - Water Infrastructure



- | | |
|----------------|---------------------|
| ● Water Meter | ● Drain |
| ▲ Fire Hydrant | ✱ Point Of Interest |
| ■ Water Valve | — Water Main |
| ◆ Manhole | □ Village Limit |



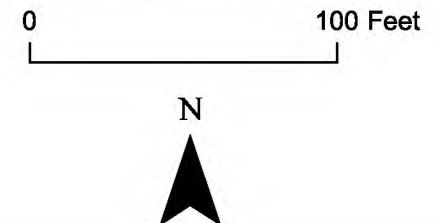


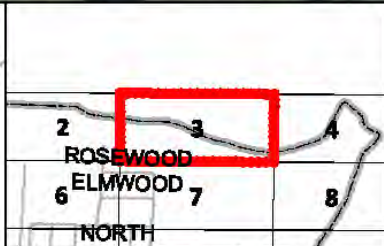
Village of Stockport - Water Infrastructure



- Water Meter
- Fire Hydrant
- Water Valve
- Manhole

- Drain
- Point Of Interest
- Water Main
- Village Limit



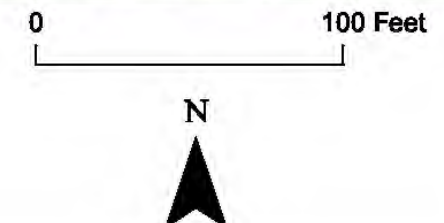


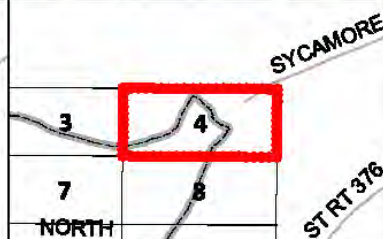
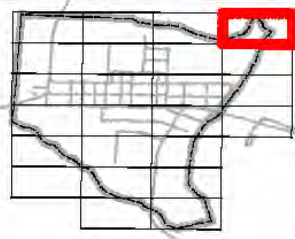
Village of Stockport - Water Infrastructure



- Water Meter
- ▲ Fire Hydrant
- Water Valve
- ◆ Manhole

- Drain
- ✱ Point Of Interest
- Water Main
- Village Limit

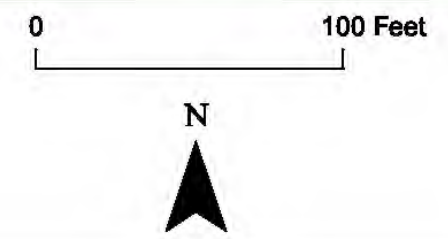


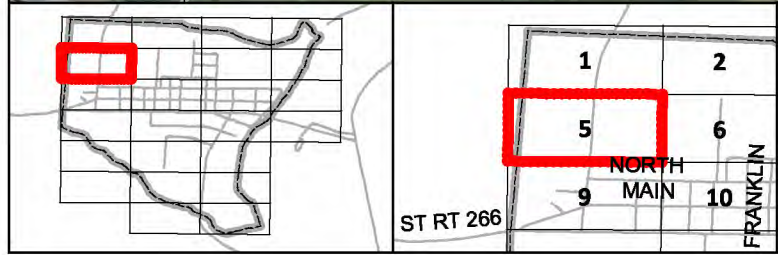


Village of Stockport - Water Infrastructure



- Water Meter
- Fire Hydrant
- Water Valve
- Manhole
- Drain
- Point Of Interest
- Water Main
- Village Limit

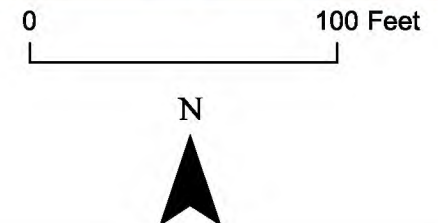


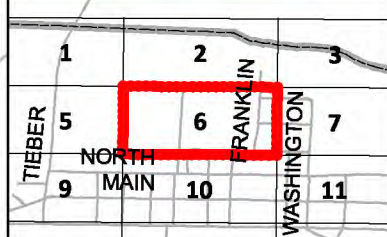
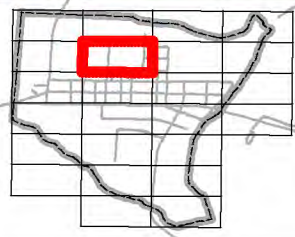


Village of Stockport - Water Infrastructure



- | | |
|----------------|---------------------|
| ● Water Meter | ● Drain |
| ▲ Fire Hydrant | ✱ Point Of Interest |
| ■ Water Valve | — Water Main |
| ◆ Manhole | □ Village Limit |





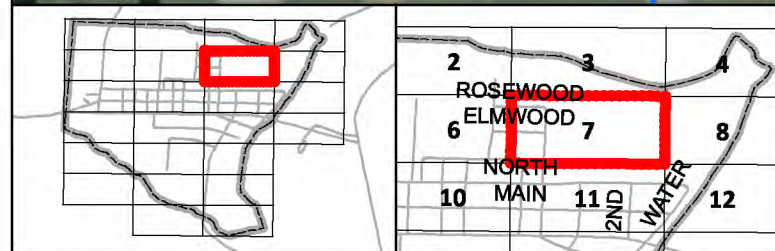
Village of Stockport - Water Infrastructure



- | | |
|----------------|---------------------|
| ● Water Meter | ● Drain |
| ▲ Fire Hydrant | ✱ Point Of Interest |
| ■ Water Valve | — Water Main |
| ◆ Manhole | □ Village Limit |

0 100 Feet





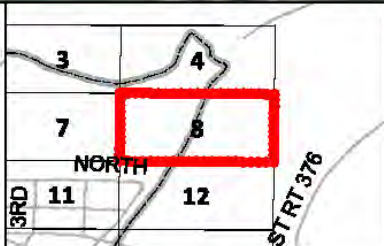
Village of Stockport - Water Infrastructure



- Water Meter
- ▲ Fire Hydrant
- Water Valve
- ◆ Manhole
- Drain
- ✱ Point Of Interest
- Water Main
- Village Limit

0 100 Feet



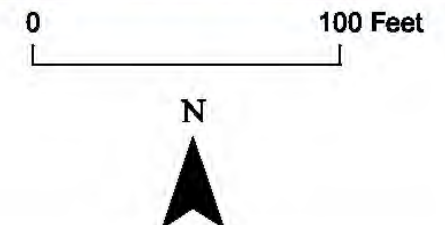


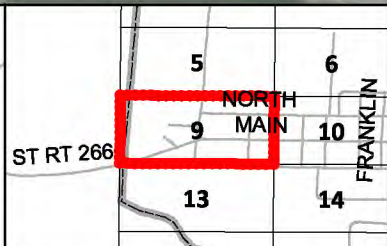
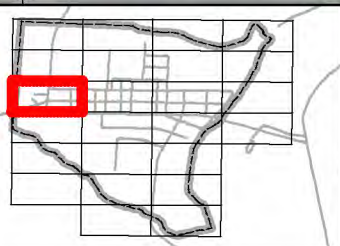
Village of Stockport - Water Infrastructure



- Water Meter
- ▲ Fire Hydrant
- Water Valve
- ◆ Manhole

- Drain
- ✱ Point Of Interest
- Water Main
- Village Limit





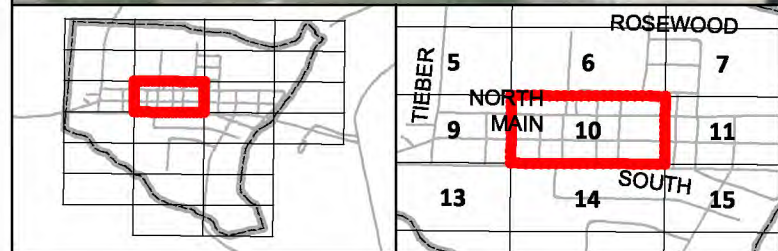
Village of Stockport - Water Infrastructure



- Water Meter
- ▲ Fire Hydrant
- Water Valve
- ◆ Manhole
- Drain
- ✱ Point Of Interest
- Water Main
- Village Limit

0 100 Feet





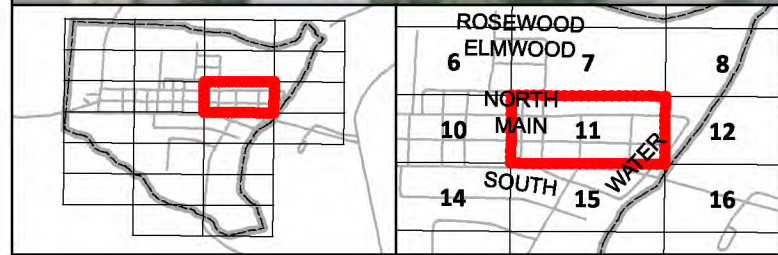
Village of Stockport - Water Infrastructure



- Water Meter
- ▲ Fire Hydrant
- Water Valve
- ◆ Manhole
- Drain
- ✱ Point Of Interest
- Water Main
- Village Limit

0 100 Feet





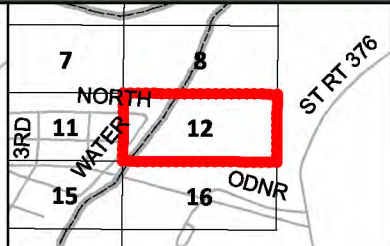
Village of Stockport - Water Infrastructure



- Water Meter
- Fire Hydrant
- Water Valve
- Manhole
- Drain
- Point Of Interest
- Water Main
- Village Limit

0 100 Feet





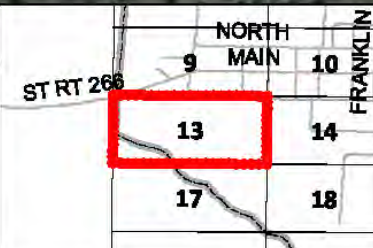
Village of Stockport - Water Infrastructure



- | | |
|----------------|---------------------|
| ● Water Meter | ● Drain |
| ▲ Fire Hydrant | ✱ Point Of Interest |
| ■ Water Valve | — Water Main |
| ◆ Manhole | □ Village Limit |

0 100 Feet





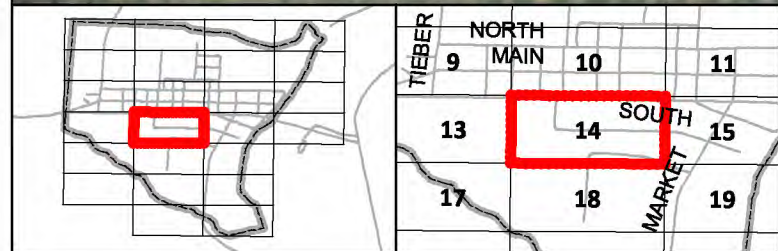
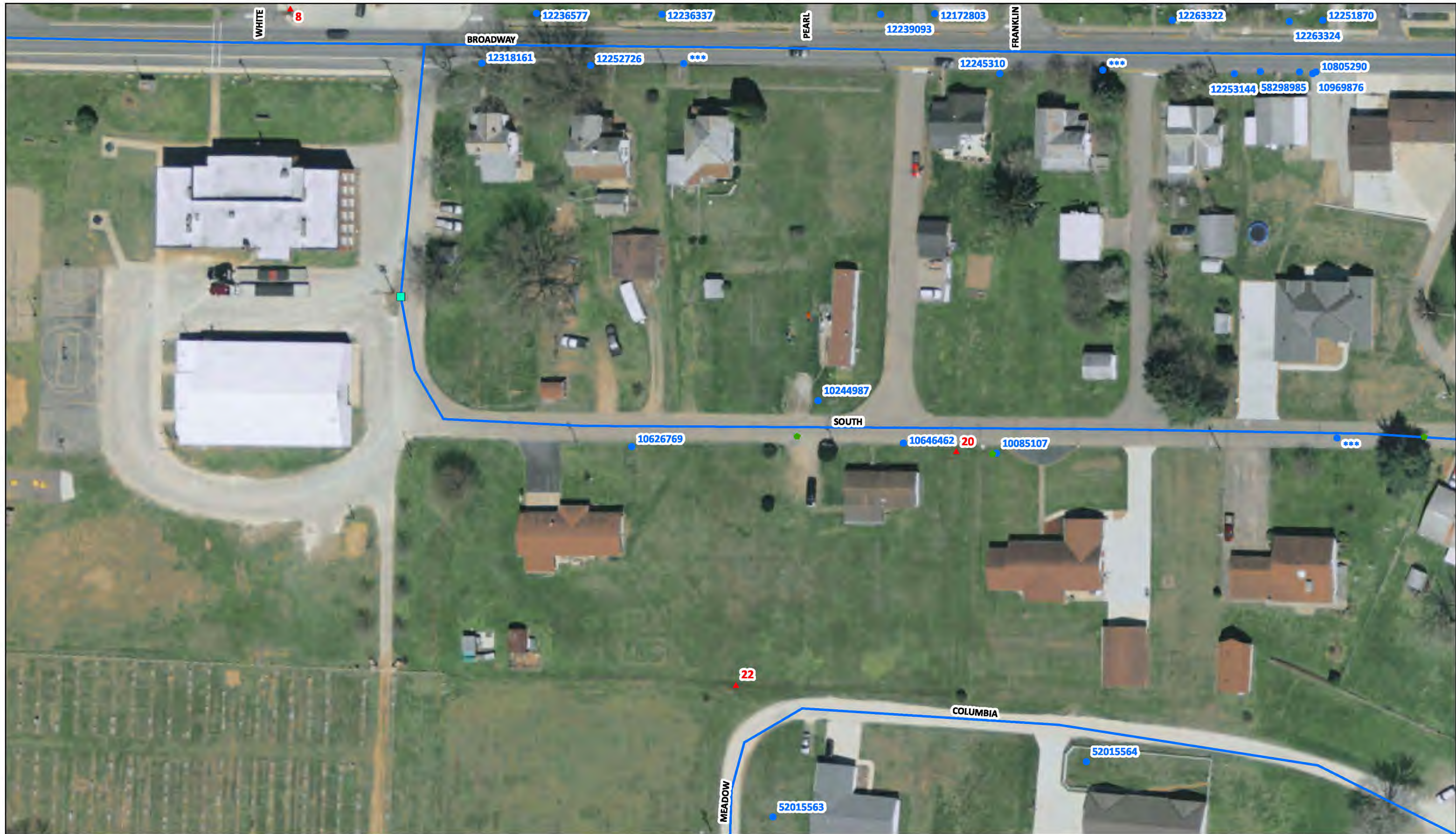
Village of Stockport - Water Infrastructure



- | | |
|----------------|---------------------|
| ● Water Meter | ■ Drain |
| ▲ Fire Hydrant | ✱ Point Of Interest |
| ■ Water Valve | — Water Main |
| ◆ Manhole | □ Village Limit |

0 100 Feet





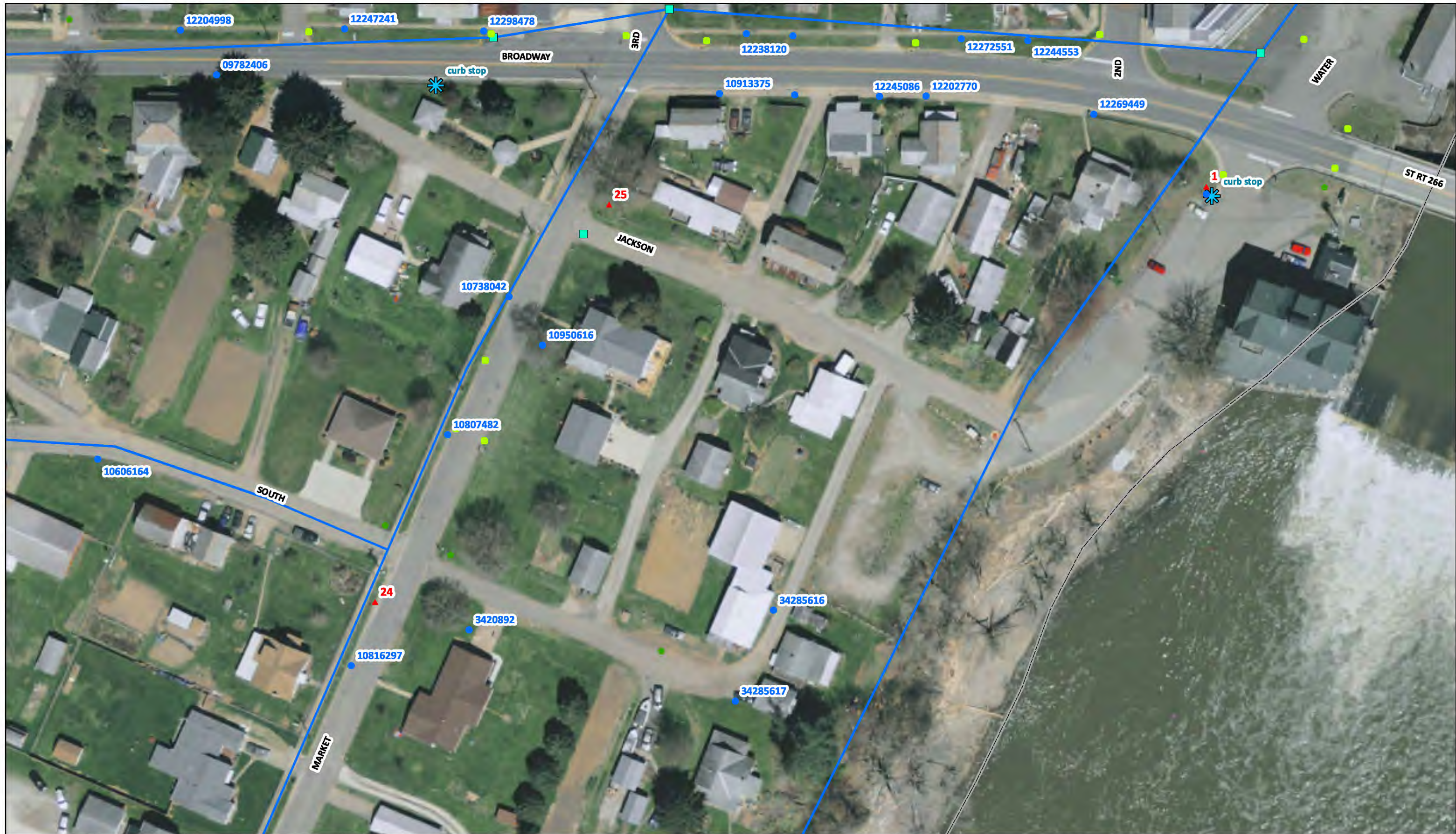
Village of Stockport - Water Infrastructure



- Water Meter
- ▲ Fire Hydrant
- Water Valve
- ◆ Manhole
- Drain
- ✱ Point Of Interest
- Water Main
- Village Limit

0 100 Feet





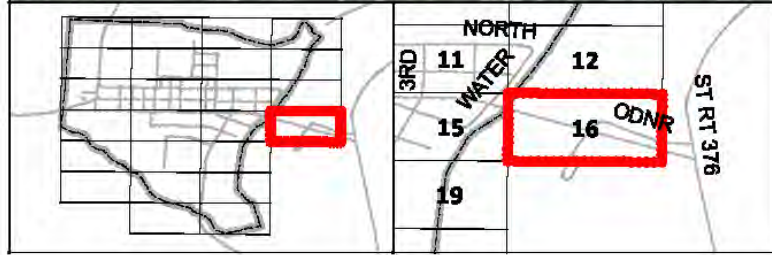
Village of Stockport - Water Infrastructure



- Water Meter
- ▲ Fire Hydrant
- Water Valve
- ◆ Manhole
- Drain
- ✱ Point Of Interest
- Water Main
- Village Limit

0 100 Feet





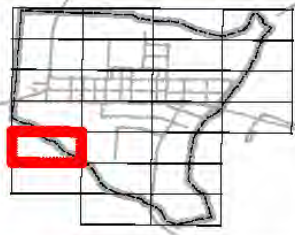
Village of Stockport - Water Infrastructure



- | | |
|----------------|---------------------|
| ● Water Meter | ■ Drain |
| ▲ Fire Hydrant | ✱ Point Of Interest |
| ■ Water Valve | — Water Main |
| ◆ Manhole | □ Village Limit |

0 100 Feet



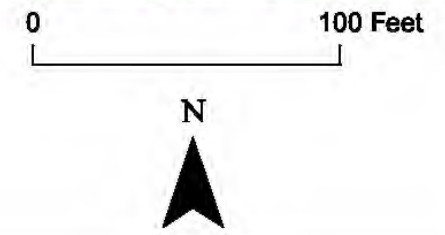


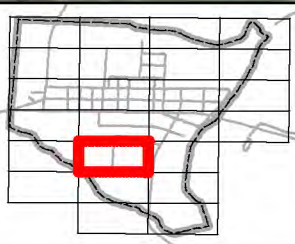
ST RT 266		BROADWAY	
13	14	17	18
20	21		

Village of Stockport - Water Infrastructure



- | | |
|----------------|---------------------|
| ● Water Meter | ■ Drain |
| ▲ Fire Hydrant | ✱ Point Of Interest |
| ■ Water Valve | — Water Main |
| ◆ Manhole | □ Village Limit |



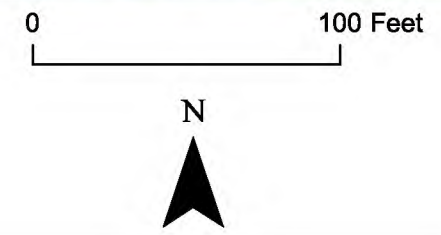


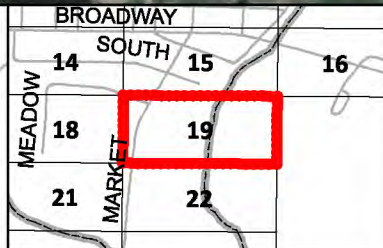
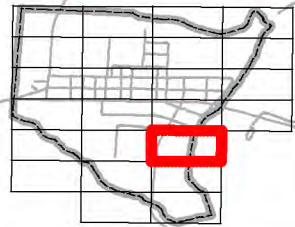
BROADWAY		
13	14	15
17	18	19
20	21	22
MARKET		
SOUTH		

Village of Stockport - Water Infrastructure



- | | | | |
|---|--------------|---|-------------------|
| ● | Water Meter | ● | Drain |
| ▲ | Fire Hydrant | ✱ | Point Of Interest |
| ■ | Water Valve | — | Water Main |
| ◆ | Manhole | □ | Village Limit |





Village of Stockport - Water Infrastructure



- Water Meter
- Fire Hydrant
- Water Valve
- Manhole
- Drain
- Point Of Interest
- Water Main
- Village Limit

0 100 Feet





17	18
20	21
	23

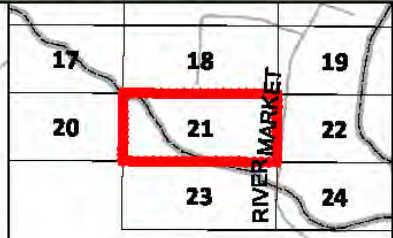
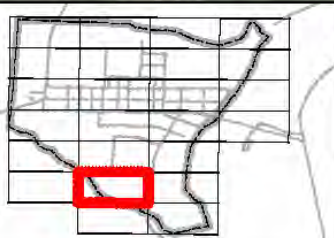
Village of Stockport - Water Infrastructure



- | | |
|----------------|---------------------|
| ● Water Meter | ■ Drain |
| ▲ Fire Hydrant | ✱ Point Of Interest |
| ■ Water Valve | — Water Main |
| ◆ Manhole | □ Village Limit |

0 100 Feet

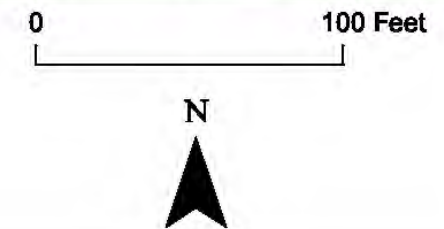


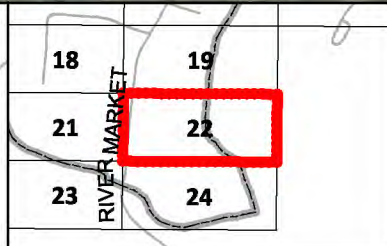
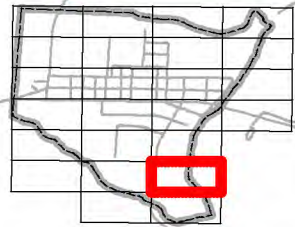


Village of Stockport - Water Infrastructure



- | | |
|----------------|---------------------|
| ● Water Meter | ■ Drain |
| ▲ Fire Hydrant | ✱ Point Of Interest |
| ■ Water Valve | — Water Main |
| ◆ Manhole | □ Village Limit |





Village of Stockport - Water Infrastructure

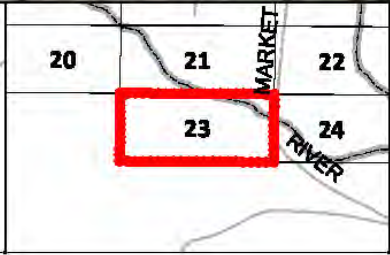
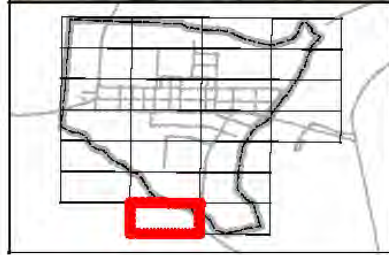


- Water Meter
- Fire Hydrant
- Water Valve
- Manhole

- Drain
- Point Of Interest
- Water Main
- Village Limit

0 100 Feet

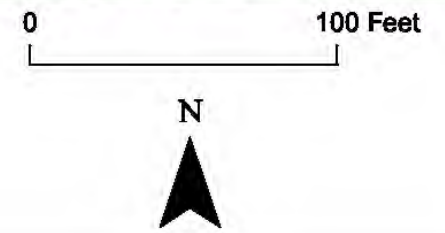


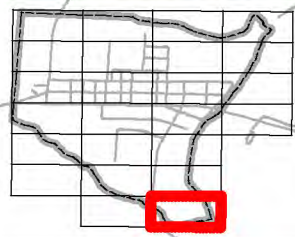


Village of Stockport - Water Infrastructure



- | | |
|----------------|---------------------|
| ● Water Meter | ■ Drain |
| ▲ Fire Hydrant | ✱ Point Of Interest |
| ■ Water Valve | — Water Main |
| ◆ Manhole | □ Village Limit |





Village of Stockport - Water Infrastructure



- | | |
|----------------|---------------------|
| ● Water Meter | ■ Drain |
| ▲ Fire Hydrant | ✱ Point Of Interest |
| ■ Water Valve | — Water Main |
| ◆ Manhole | □ Village Limit |

0 100 Feet

