

Village of Wintersville, Ohio

Public Water System Lead (Pb) Components

PWS# 413003

Prepared March 2017

To comply with Section 6109.21 of the Ohio Revised Code, enacted in September 2016, the Village of Wintersville in Jefferson County, Ohio has created the following report and attached map to identify known and potential components of its public water system that contain lead (Pb).

RCAP staff and the Village of Wintersville Water Department met on January 1st, 2017 to review a map of the service area. Few applicable historical maintenance, and operational records were available to be consulted, however, many as-built construction maps were used during the lead assessment. In addition, an operator with extensive experience and knowledge of the system was present to provide the best knowledge of the system. Existing mapping and historical maintenance knowledge is the base of the institutional memory for the water distribution system. Lead component findings were identified by Wintersville water operators and recorded in a GIS database.

Service Lines and Ownership

The Village of Wintersville water department distributes water to 1,869 customers amongst approximately 1,975 parcels. The Village owns and maintains service lines from the water distribution mains up to the curb stop for each water customer. The remainder of each service line from the curb stop to the building is the responsibility of the property owner.

Since the earliest construction of the water system in 1956, it has been standard procedure for the water system operators to use $\frac{3}{4}$ " to 2" copper from the tapping saddle on the main up to the curb stop. It is recommended that property owners install copper or copper-size plastic for private water service lines, but there are no official regulations to legally enforce this within the village. While copper, PVC, and galvanized pipe have been used for private lines, lead pipe has never been found in this water distribution system. Experienced operators currently in charge of maintaining the water distribution system have done repair work in all areas of the village and never uncovered a private service line made of lead. It is common to replace faulty copper or galvanized service lines, but a lead line has never been discovered. Based on strict inspection practices of new services, institutional knowledge, and available maintenance records, the Village considers the chances of existence of lead service lines to be negligible.

Distribution System

The Village of Wintersville purchases treated surface water from both the City of Steubenville and Jefferson County. It then distributes potable water through approximately 25 miles of water main lines to residences

and businesses. The distribution system has been expanded and sections have been replaced over the years. Approximately 14 miles of pipe pre-date the 1950s. The majority of the system is made up of ductile iron pipe, with a few small sections of copper and plastic. Within the distribution system, there is a section of ductile iron pipe that brings water from Steubenville into Winterville. It is likely that this section was constructed using lead components in the joints. This cannot be confirmed, but it is considered highly probable. The portion of the system that may contain leaded joints only makes up about five percent of all the water mains. Since this section is primarily a transmission line, there are not many services branching from these pipes.

Water Meters & Indoor Plumbing

Water meters at each customer location may be as old as 20 years. Few of these may utilize brass alloy housings that contain more than 8% lead. None of the internal components are believed to contain lead. Meters installed after 1998 may contain up to 8% lead. Meters installed after 2014 will have less than 0.25% lead. The newest meters in the system are completely plastic and lead free.

Buildings in Ohio built prior to 1998 or that use plumbing material or solder manufactured before 1998 may have materials with greater than 8% lead and are at a higher risk of contributing lead to the drinking water than materials manufactured after 1998.

Buildings built and plumbing materials manufactured after 2014 were required to have less than 0.25% lead by weight and have the lowest risk for contributing lead to the drinking water. It should be noted however that, although prohibited, some use of leaded solder or leaded components may have occurred after the prohibitions became effective.

The Village of Winterville does not have any local laws or regulations that ban the use lead for residential plumbing before state or federal statutes. Less than five properties are known to have structures built since 2014, and therefore nearly all buildings in the village may have some lead in the solder or fixtures. The Village is encouraging its residents to inspect their plumbing and report any potential lead to the water department.

Customer Self-Reporting

The information on this map regarding privately owned service lines is based on the limited information from the water system staff and Jefferson County building and parcel data. Property owners are encouraged to inspect their own service lines entering the building if these are in anyway exposed, and notify the Village of Winterville Water Department if they have determined whether or not a lead service line exists. Please contact the Water Billing Clerk by calling 740-266-3175 or visiting the main office at 200 Grove Street, Winterville, Ohio, 43953. A representative from the water department will contact you to confirm and update this information for the next map release.

Contacts and Resources

If you have questions about known and potential lead components within the Village of Wintersville Public Water System, please contact:

Water Department Office
200 Grove Street, Wintersville, Ohio, 43953
Phone 740-266-3175

For more information about lead service lines and their removal, we recommend the following resources:

- **The Lead Service Line Replacement Collaborative**
<http://www.lslr-collaborative.org/resources-for-concerned-consumers.html>
- **Ohio EPA 'Learn About Lead' page**
<http://epa.ohio.gov/pic/lead.aspx>
- **US EPA Lead in Drinking Water Information Page**
<https://www.epa.gov/ground-water-and-drinking-water/basic-information-about-lead-drinking-water>

Village of Wintersville Public Water Distribution System Lead Components and Lead Service Lines Map

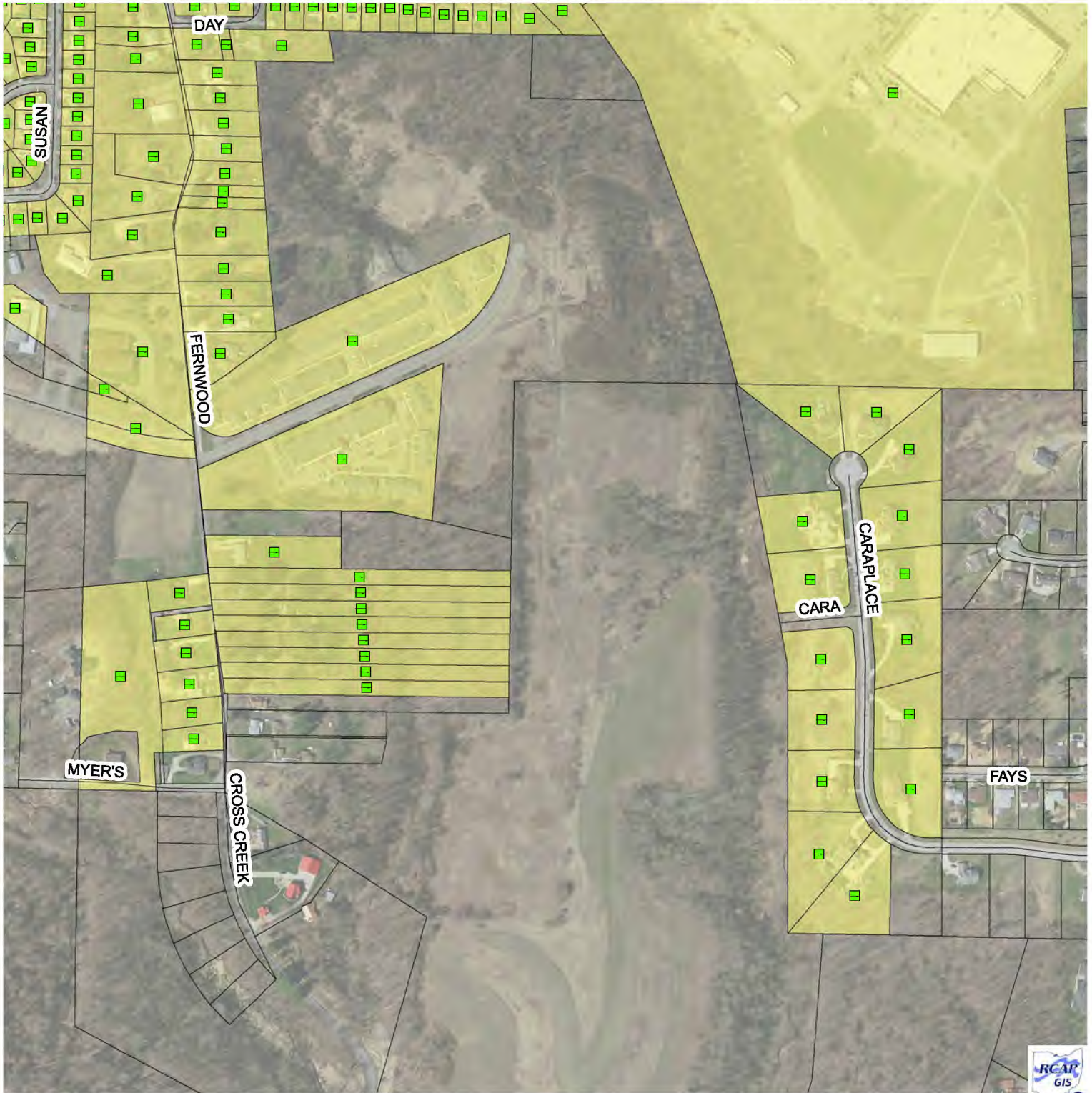
The following map(s) does not verify the presence of lead in any of the lines or structures shown. This map only shows the probable or possible locations based on the year that the structure was built, historical maintenance and operation records, and customer or utility staff verification.

This map is not intended for design engineering, surveying, or construction purposes. Information and data contained or accessed within this map emanates from various public and private sources and may contain errors and omissions

All data, information and documentation within this map are provided "as is" without warranty of any kind, either expressed or implied. The suitability of the data and information contained in this map is not guaranteed, and the user assumes all risk for such uses. WSOS Community Action and its employees, affiliates, agents and licensors cannot and do not warrant the accuracy, completeness, non-infringement, merchantability or fitness of any information contained within this map.

GIS Data Sources: OGRIP, OSIP, Jefferson County Auditor, RCAP GIS. Datum/Projection: NAD 1983 Ohio State Plane North (ft) Date: 2/1/2017

Village of Wintersville, OH Probability of Lead Service Lines in Water Distribution System



0 170 340 680 Feet

Symbol representing single service line

Public
Private

Ownership of Line

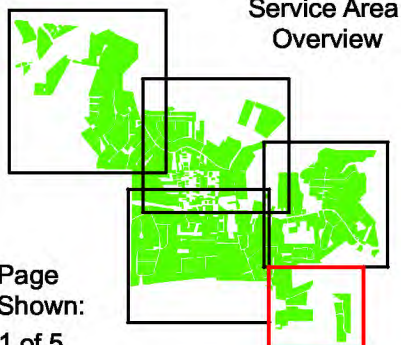
Material of Service Line

Lead (There is none)

Non-Lead

No Information

Wintersville Service Area



Page
Shown:
1 of 5

Created for use by The Village of Wintersville
By RCAP GIS Team
March 1, 2017

Buildings in Ohio built prior to 1998 or that use plumbing material or solder manufactured before 1998 may have materials with greater than 8% lead and are at a higher risk of contributing lead to the drinking water than materials manufactured after 1998.

In addition, buildings built and plumbing materials manufactured after 2014 were required to have less than 0.25% lead by weight and have the lowest risk for contributing lead to the drinking water. It should be noted however that, although prohibited, some use of leaded solder or leaded components may have occurred after the prohibitions became effective.

Coordinate System:

NAD 1983 StatePlane Ohio North FIPS 3401 Feet

Data Sources:

Village of Wintersville, Jefferson County, RCAP GIS Team,
ESRI, OGRIP, OSIP, TIGER Lines

Village of Wintersville, OH Probability of Lead Service Lines in Water Distribution System



0 250 500 1,000 Feet

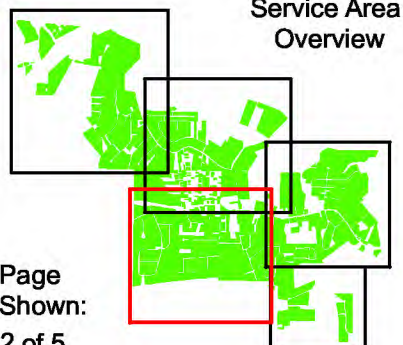
Symbol representing single service line

Public Ownership of Line
Private

Material of Service Line

Lead (There is none)
Non-Lead
No Information

Wintersville Service Area



Page
Shown:
2 of 5

Created for use by The Village of Wintersville
By RCAP GIS Team
March 1, 2017

Buildings in Ohio built prior to 1998 or that use plumbing material or solder manufactured before 1998 may have materials with greater than 8% lead and are at a higher risk of contributing lead to the drinking water than materials manufactured after 1998.

In addition, buildings built and plumbing materials manufactured after 2014 were required to have less than 0.25% lead by weight and have the lowest risk for contributing lead to the drinking water. It should be noted however that, although prohibited, some use of leaded solder or leaded components may have occurred after the prohibitions became effective.

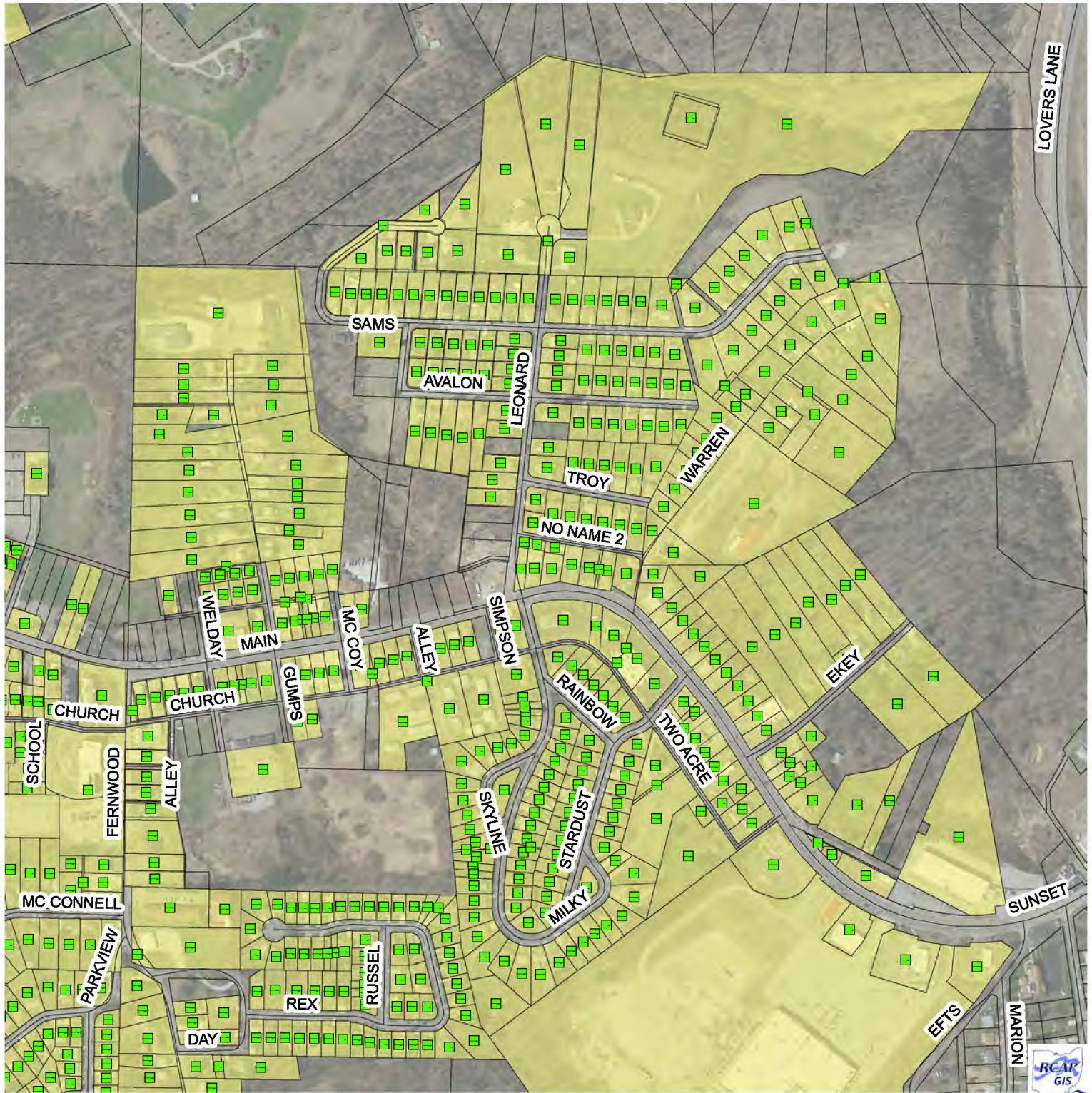
Coordinate System:

NAD 1983 StatePlane Ohio North FIPS 3401 Feet

Data Sources:

Village of Wintersville, Jefferson County, RCAP GIS Team, ESRI, OGRIP, OSIP, TIGER Lines

Village of Wintersville, OH Probability of Lead Service Lines in Water Distribution System



0 225 450 900 Feet

□ Symbol representing single service line

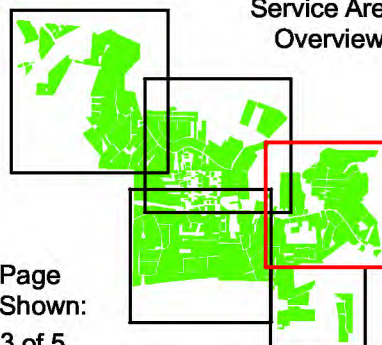
Ownership of Line
Public
Private

Material of Service Line

Lead (There is none)
Non-Lead
No Information

Wintersville Service Area

Service Area Overview



Page
Shown:
3 of 5

Created for use by The Village of Wintersville
By RCAP GIS Team
March 1, 2017

Buildings in Ohio built prior to 1998 or that use plumbing material or solder manufactured before 1998 may have materials with greater than 8% lead and are at a higher risk of contributing lead to the drinking water than materials manufactured after 1998.

In addition, buildings built and plumbing materials manufactured after 2014 were required to have less than 0.25% lead by weight and have the lowest risk for contributing lead to the drinking water. It should be noted however that, although prohibited, some use of leaded solder or leaded components may have occurred after the prohibitions became effective.

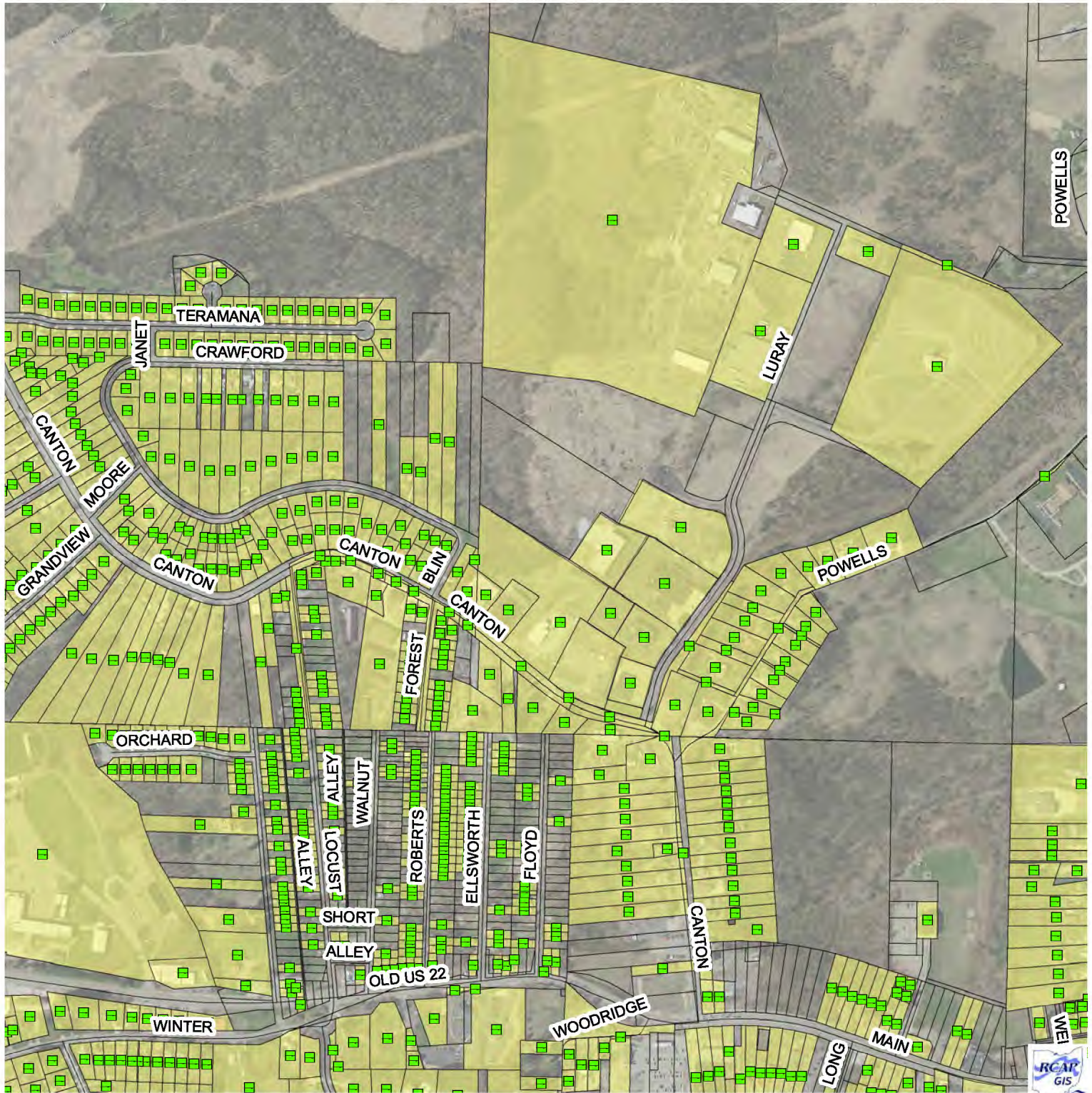
Coordinate System:

NAD 1983 StatePlane Ohio North FIPS 3401 Feet

Data Sources:

Village of Wintersville, Jefferson County, RCAP GIS Team,
ESRI, OGRIP, OSIP, TIGER Lines

Village of Wintersville, OH Probability of Lead Service Lines in Water Distribution System



0 260 520 1,040 Feet

Symbol representing single service line

Public
Private

Ownership of Line

Material of Service Line

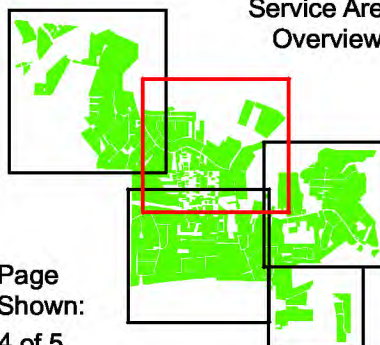
Lead (There is none)

Non-Lead

No Information

Wintersville Service Area

Service Area Overview



Page
Shown:
4 of 5

Created for use by The Village of Wintersville
By RCAP GIS Team
March 1, 2017

Buildings in Ohio built prior to 1998 or that use plumbing material or solder manufactured before 1998 may have materials with greater than 8% lead and are at a higher risk of contributing lead to the drinking water than materials manufactured after 1998.

In addition, buildings built and plumbing materials manufactured after 2014 were required to have less than 0.25% lead by weight and have the lowest risk for contributing lead to the drinking water. It should be noted however that, although prohibited, some use of leaded solder or leaded components may have occurred after the prohibitions became effective.

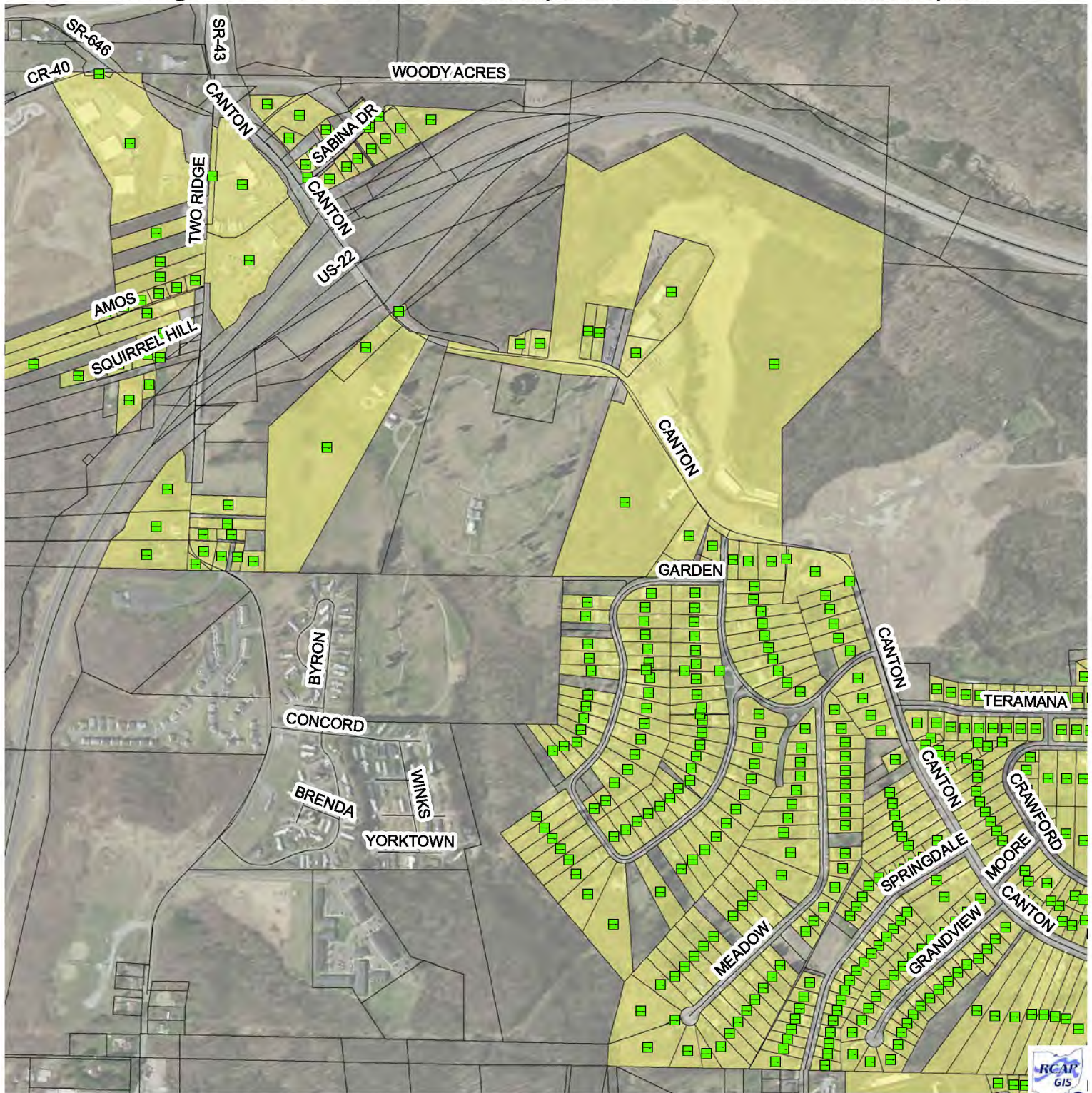
Coordinate System:

NAD 1983 StatePlane Ohio North FIPS 3401 Feet

Data Sources:

Village of Wintersville, Jefferson County, RCAP GIS Team, ESRI, OGRIP, OSIP, TIGER Lines

Village of Wintersville, OH Probability of Lead Service Lines in Water Distribution System



0 285 570 1,140 Feet

Symbol representing single service line

Public Ownership of Line
Private

Material of Service Line

Lead (There is none)
Non-Lead
No Information

Wintersville Service Area



Service Area Overview



Page
Shown:
5 of 5

Created for use by The Village of Wintersville
By RCAP GIS Team
March 1, 2017

Buildings in Ohio built prior to 1998 or that use plumbing material or solder manufactured before 1998 may have materials with greater than 8% lead and are at a higher risk of contributing lead to the drinking water than materials manufactured after 1998.

In addition, buildings built and plumbing materials manufactured after 2014 were required to have less than 0.25% lead by weight and have the lowest risk for contributing lead to the drinking water. It should be noted however that, although prohibited, some use of leaded solder or leaded components may have occurred after the prohibitions became effective.

Coordinate System:

NAD 1983 StatePlane Ohio North FIPS 3401 Feet

Data Sources:

Village of Wintersville, Jefferson County, RCAP GIS Team, ESRI, OGRIP, OSIP, TIGER Lines

VERIFICATION FORM FOR COMMUNITY PUBLIC WATER SYSTEMS CLAIMING NO LEAD SERVICE LINES

The owner or operator of all community public water systems must identify and map areas of their distribution system that are known or are likely to contain lead service lines. Systems must submit a copy of the applicable map to the Ohio Department of Health and the Ohio Department of Job and Family Services. Systems must also submit a report to the director containing at least both of the following: (1) The applicable map with narrative, and (2) A list of sampling locations used to collect samples as required by Ohio Revised Code (ORC) Section 6109.121 and any rules adopted thereunder, including contact information for the owner and occupant of each sampling site.

Should a water system determine no lead service lines exist in their distribution system, they must provide information stating they reviewed, at the minimum, historical permit records and local ordinances, distribution maintenance records and information pertaining to installation dates or materials for all services lines. This information must be verified below.

I HEREBY CERTIFY THAT THE FOLLOWING METHOD(S) WERE USED TO DETERMINE NO LEAD SERVICE LINES EXIST IN THIS WATER SYSTEM'S DISTRIBUTION SYSTEM, AS REQUIRED BY ORC 6109.121(F):

LEAD SERVICE LINE VERIFICATION

This PWS states they have no lead service lines and has reviewed the following information (select one or more of the following):

- ☐ Historical permit records and/or local ordinances
- ☒ Distribution maintenance records (i.e. meter replacement, waterline break repairs)
- ☐ Information pertaining to installation dates for all service lines (i.e. after 1986 when lead services lines were banned)
- ☐ Service line material of all service lines is known (i.e. all service lines are known to be PVC)

Louis Herceg

Signature of Responsible Person

3-7-17

Date

Louis Herceg Operator of Record

Printed Name and Title of Responsible Person

PWS NAME: Wintersville
PWS ID: OH 413003
COUNTY: Jefferson

For Ohio EPA use only:

Date Verification Rec'd: _____