

### Legend

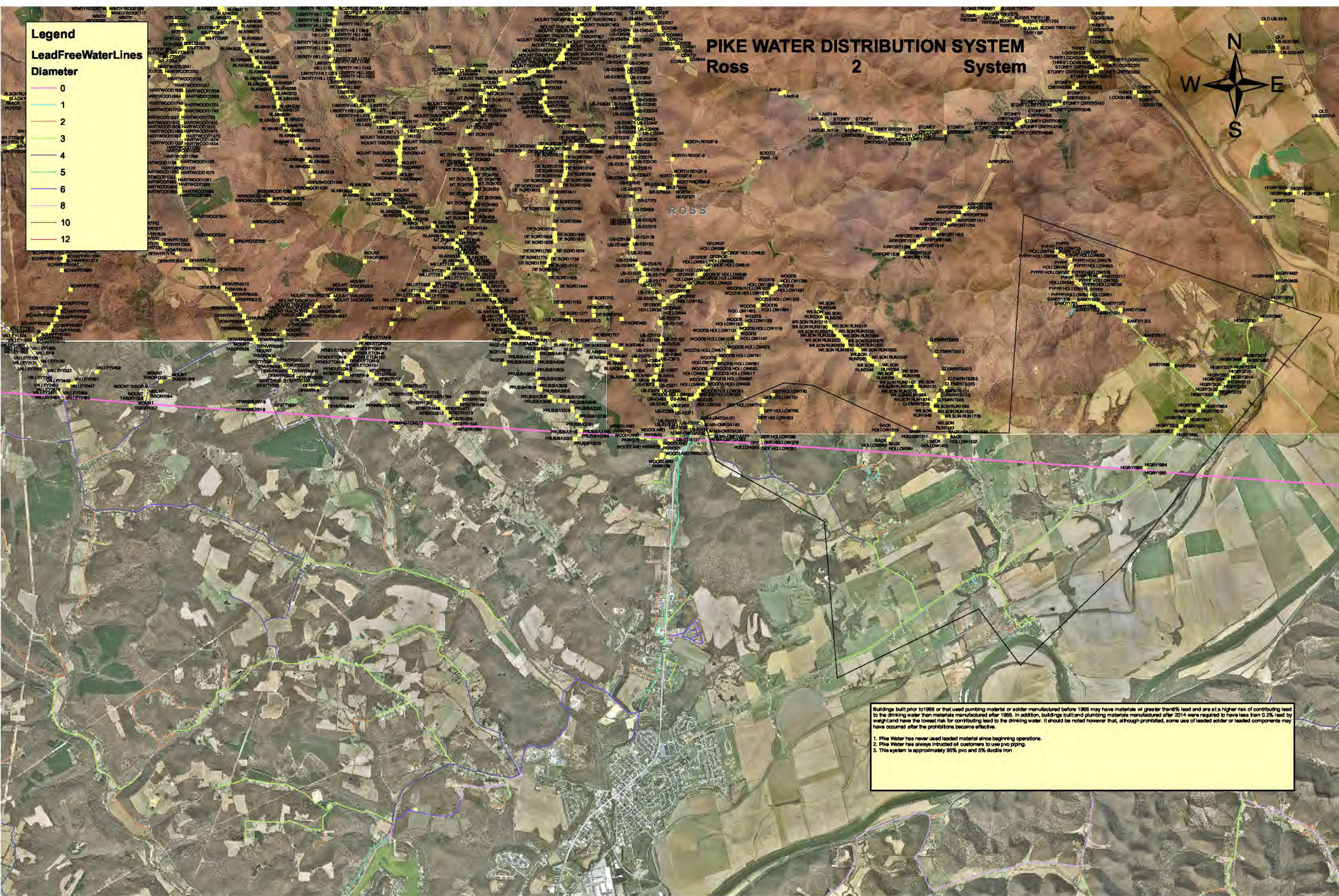
#### LeadFreeWaterLines

#### Diameter



# PIKE WATER DISTRIBUTION SYSTEM

## Ross 2 System



Buildings built prior to 1988 or that used plumbing material or solder manufactured before 1986 may have materials at greater than 6% lead and are at a higher risk of contributing lead to the drinking water than materials manufactured after 1986. In addition, buildings built and plumbing materials manufactured after 2014 were required to have less than 0.25% lead by weight and have the lowest risk of contributing lead to the drinking water. It should be noted however that, although prohibited, some use of leaded solder or leaded components may have occurred after the prohibitions became effective.

1. Pike Water has never used leaded material since beginning operations.
2. Pike Water has always notified all customers to use pro piping.
3. The system is approximately 85% pro and 6% ductile iron.