

OLD STRAITSVILLE WATER ASSOCIATION POTABLE WATER DISTRIBUTION SYSTEM

SERVICE NARRATIVE

Community Public Water System

Old Straitsville Water Associations potable water distribution system is comprised of PVC of various ages. OSWA has replaced its systems over the years and is now serviced by PVC lines. All newer installations/replacements are lead free and utilized plastic piping.

The attached maps of the system show all mains that are lead free, no main lines contain any piping which has been known to contain lead.

Characteristics of Buildings

Some homes built before the water association, these older homes could have possible lead sources in the private plumbing and fixtures. Buildings constructed prior to 1998 have a higher risk of lead piping, solder, or fixtures.

Prevention and Detection

To reduce the risk of lead contamination in the distribution system, OSWA does annual testing through their system to find possible lead contamination. Attached in the system maps are sample locations, all of which were designated to be lead free areas.



5085 TILE PLANT ROAD
NEW LEXINGTON, OH 45764
CONTACT PROJECT MANAGER
740-348-6695
FAX 740-348-6697
WWW.IBIDRCLIP.COM

- PRIVATE SERVICE
PUSH 1998 - NON
LEAD
- PRIVATE SERVICE
PRE 1998 - POSSIBLE
LEAD
- PRIVATE SERVICE -
UNKNOWN

PERRY & HOCKING COUNTY
OLD STRAITSVILLE WATER ASSOCIATION

LEAD SYSTEM MAP

- PUBLIC WATER
LINE -
NON LEAD
- PUBLIC WATER
LINE -
KNOWN
LEAD
- PUBLIC WATER
LINE -
UNKNOWN

GRAPHIC SCALE



(IN FEET)
1 inch = 1000 ft.





5085 TILE PLANT ROAD
NEW LEONITION, OH 43764
CONTACT PROJECT MANAGER
740-348-6696
FAX 740-348-6697
WWW.IBIGROUP.COM

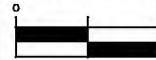
- PRIVATE SERVICE
POST 1998 - NON
LEAD
- PRIVATE SERVICE
PRE 1998 - POSSIBLE
LEAD
- PRIVATE SERVICE -
UNKNOWN

PERRY & HOCKING COUNTY
OLD STRAITSVILLE WATER ASSOCIATION

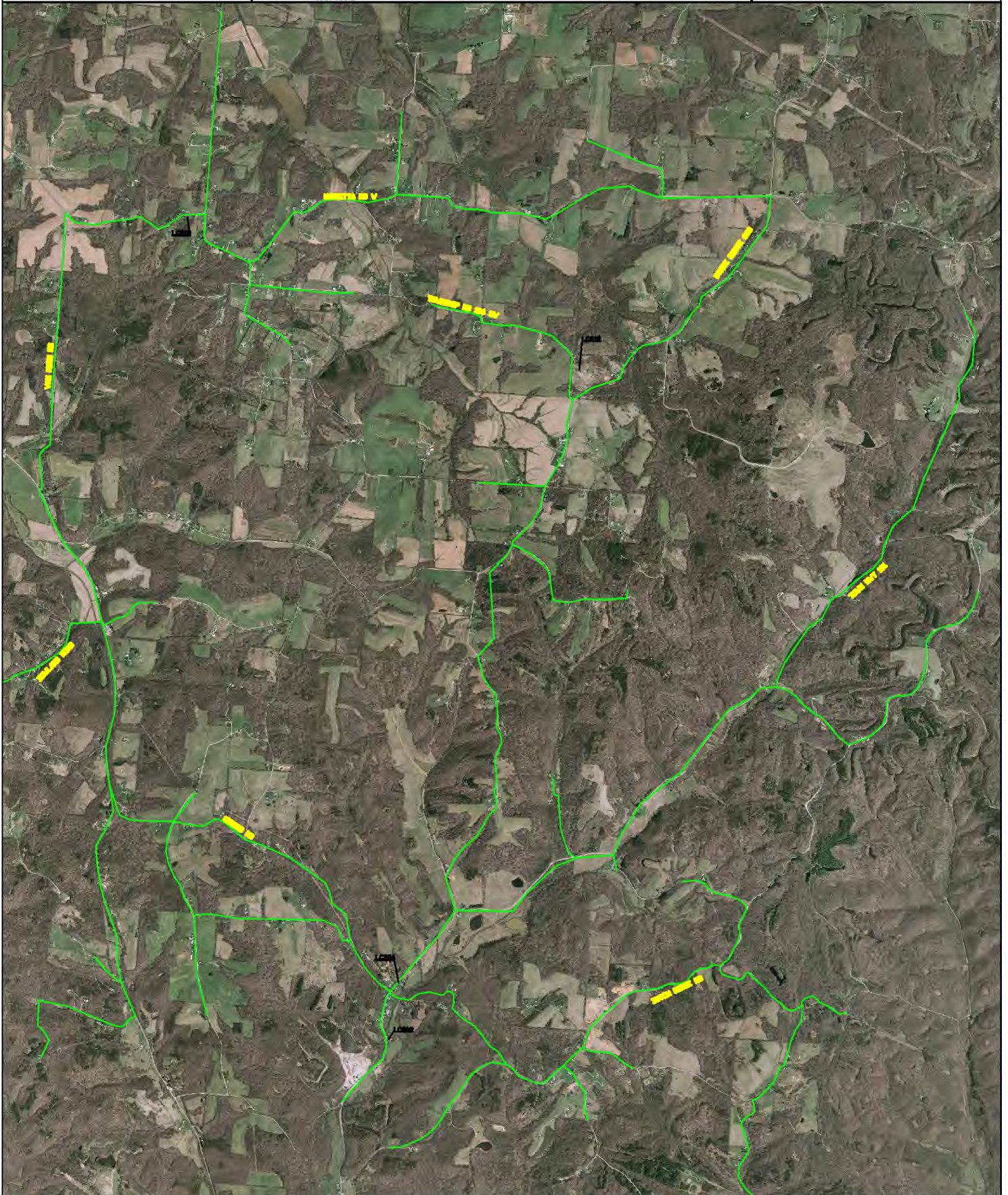
LEAD SYSTEM MAP

- PUBLIC WATER LINE -
NEW LEAD
- PUBLIC WATER LINE -
KNOWN LEAD
- PUBLIC WATER
LINE -
UNKNOWN

GRAPHIC SCALE



(IN FEET)
1 inch = 1000 ft.





5085 TILE PLANT ROAD
NEW LEON, OH 43764
CONTACT PROJECT MANAGER
740-348-6696
FAX 740-348-6697
WWW.IBIGROUP.COM

- PRIVATE SERVICE
POST 1998 - NON
LEAD
- PRIVATE SERVICE
PRE 1998 - POSSIBLE
LEAD
- PRIVATE SERVICE -
UNKNOWN

PERRY & HOCKING COUNTY
OLD STRAITSVILLE WATER ASSOCIATION

LEAD SYSTEM MAP

- PUBLIC WATER LINE -
NON LEAD
- PUBLIC WATER LINE -
KNOWN LEAD
- PUBLIC WATER
LINE -
UNKNOWN

GRAPHIC SCALE



(IN FEET)
1 inch = 1000 ft.





5085 TILE PLANT ROAD
NEW LEON, OH 43764
CONTACT PROJECT MANAGER
740-348-6698
FAX 740-348-6697
WWW.IBIGROUP.COM

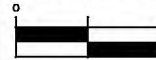
- PRIVATE SERVICE
POST 1998 - NON
LEAD
- PRIVATE SERVICE
PRE 1998 - POSSIBLE
LEAD
- PRIVATE SERVICE -
UNKNOWN

PERRY & HOCKING COUNTY
OLD STRAITSVILLE WATER ASSOCIATION

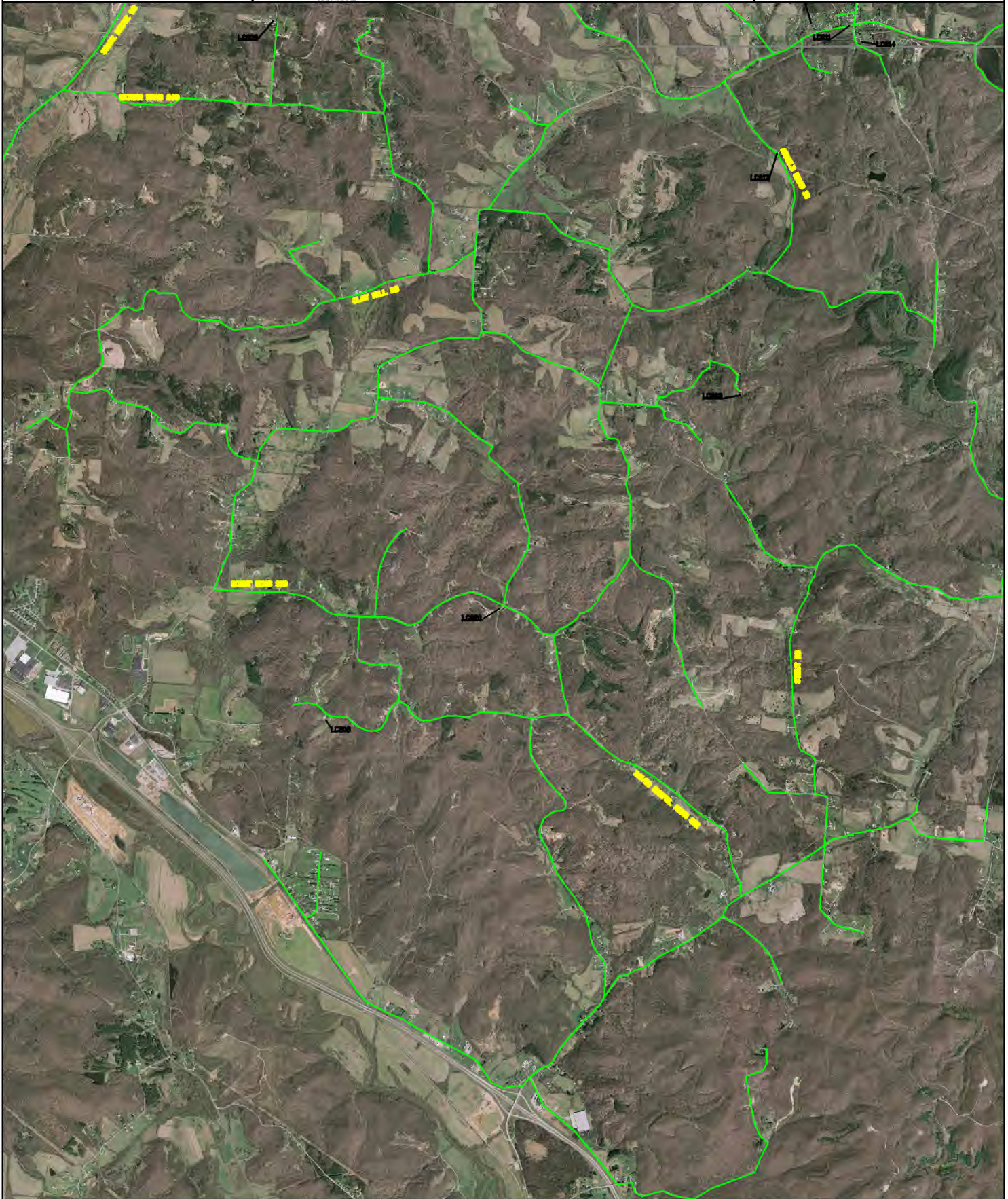
LEAD SYSTEM MAP

- PUBLIC WATER
LINE -
NEW LEAD
- PUBLIC WATER LINE
- KNOWN
LEAD
- PUBLIC WATER
LINE -
UNKNOWN

GRAPHIC SCALE



(IN FEET)
1 inch = 1000 ft.





5085 TILE PLANT ROAD
NEW LEON, OH 43764
CONTACT PROJECT MANAGER
740-348-6698
FAX 740-348-6697
WWW.IBIGROUP.COM

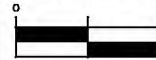
- PRIVATE SERVICE
POST 1998 - NON
LEAD
- PRIVATE SERVICE
PRE 1998 - POSSIBLE
LEAD
- PRIVATE SERVICE -
UNKNOWN

PERRY & HOCKING COUNTY
OLD STRAITSVILLE WATER ASSOCIATION

LEAD SYSTEM MAP

- PUBLIC WATER
LINE - NEW LEAD
- PUBLIC WATER
LINE - KNOWN
LEAD
- PUBLIC WATER
LINE - UNKNOWN

GRAPHIC SCALE



(IN FEET)
1 inch = 1000 ft.

