



Berlin Water Company Public Water System Lead (Pb) Components

PWSID# OH3800012

Prepared February 2017

To comply with Section 6109.121 of the Ohio Revised Code, enacted in September 2016, the Berlin Water Company in Holmes County, Ohio has created the following report and attached map to identify known water service lines that contain lead (Pb).

The following information and attached map do not verify the presence of lead in any of the plumbing components or structures shown. The information and map only show the probable or possible locations based on the pipe material that was typically used in the year that structures were built, or by the year that the plumbing component was installed.

RCAP staff and the Berlin Water Company staff met on February 8th, 2017 to review a map of the service area. All information within this report is from Berlin staff knowledge. Mr. Wendyl Kandel, one of the operators, has installed or supervised the installation of service lines since the 1970s. His vast knowledge about line age, material, and diameter within the system have been recorded and put into a GIS database. Since the construction of the water distribution system, it has been standard procedure to use copper or plastic service lines. A very small percentage of the service lines are iron that serve commercial buildings.

Public and Private Ownership of Service Lines

The Berlin Water Company distributes water to 739 customers. Berlin Water owns and maintains service lines from the water distribution mains up to the curb stops. The remainder of each service line from the curb stop to the building is the responsibility of the property owner.

RCAP GIS mapped Berlin Water in 2015-2016. The table below provides information from the GIS database about the material of publicly owned service lines from the main line to the curb stops. Public services installed before 1998 may have leaded solder or fittings that contain more than 8% lead.

Public Service Line Material		
Material	# Public Lines	% of System
Copper	516	88.21%
CTS CPVC	31	5.30%
C900 PVC	26	4.44%
Ductile Iron	5	0.85%
Cast Iron	2	0.34%
Schedule 80 PVC	2	0.34%
SDR26 PVC	2	0.34%
Schedule 40 PVC	1	0.17%

Depending on customer preference, material of privately owned portions of service lines are either galvanized steel, copper, or plastic. The Berlin Water Company does not keep record of what type of pipe that customers install. Private services installed before 1998 may have leaded solder or fittings that contain more than 8% lead.

Distribution System

Within the distribution system, none of the water main pipes themselves are lead, however, there are joints, valves, and fittings within the system that may contain lead.

The system has approximately 24.8 miles of water main lines. The table below shows which lines are likely to contain lead solder, valves, or fittings. The material and age of the pipe determines which category it falls into.

Probability of Leaded Components in Water Mains		
Lead in Water Main Materials	Feet of Pipe	% of System
Probable (material and age typical of pre-regulation)	24254.77	18.53%
Improbable (material and age typical of post-regulation)	106659.41	81.47%

Water Meters and Indoor Plumbing

Water meters at each customer location may contain more than 8% lead. Meters installed after 1998 may contain up to 8% lead. Meters installed after 2014 will have less than 0.25% lead.

Buildings in Ohio built prior to 1998 or that use plumbing material or solder manufactured before 1998 may have materials with greater than 8% lead and are at a higher risk of contributing lead to the drinking water than materials manufactured after 1998.

Buildings built and plumbing materials manufactured after 2014 were required to have less than 0.25% lead by weight and have the lowest risk for contributing lead to the drinking water. It should be noted however that, although prohibited, some use of leaded solder or leaded components may have occurred after the prohibitions became effective.

Customer Self-Reporting

The information on this map regarding privately owned service lines is based on the limited information from the water system staff and Holmes County building and parcel data. Property owners are encouraged to inspect their own service lines entering the building if these are in anyway exposed, and notify the Berlin Water Company if they have determined whether or not a lead service line exists. Please contact the Water Billing Clerk by calling 330-948-2040 or sending an email to. A representative from the water department will contact you to confirm and update this information for the next map release.

Contacts and Resources

If you have questions about known and potential lead components within the Berlin Water Company Public Water System, please contact:

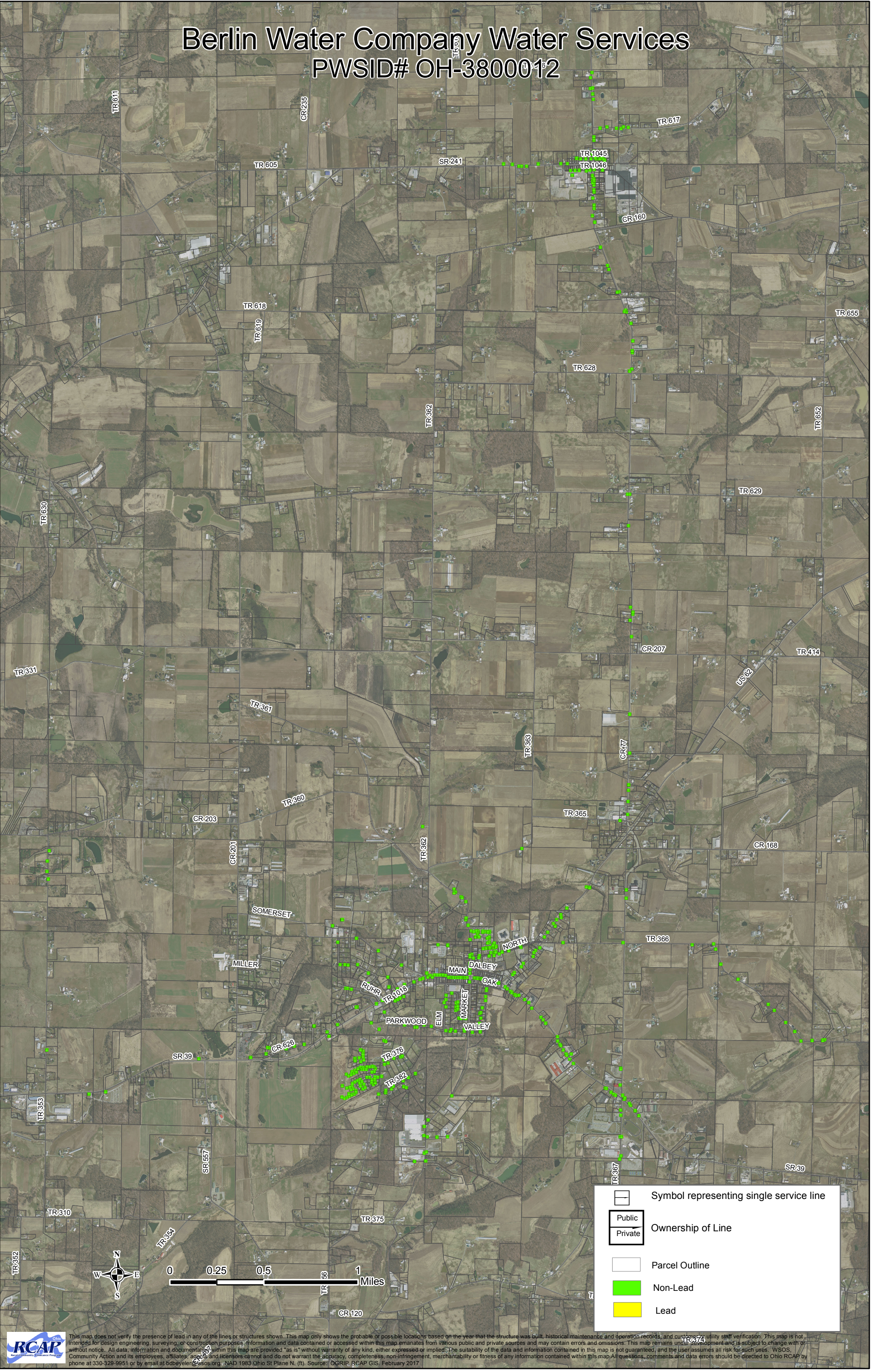
Berlin Water Company
5481 Elm St.
Berlin, OH 44610
330-893-4440

For more information about lead service lines and their removal, we recommend the following resources:

- **The Lead Service Line Replacement Collaborative**
<http://www.lslr-collaborative.org/resources-for-concerned-consumers.html>
- **Ohio EPA 'Learn About Lead' page** <http://epa.ohio.gov/pic/lead.aspx>
- **US EPA Lead in Drinking Water Information Page**
<https://www.epa.gov/ground-water-and-drinking-water/basic-information-about-lead-drinking-water>

Berlin Water Company Water Services

PWSID# OH-3800012



**VERIFICATION FORM FOR COMMUNITY PUBLIC WATER SYSTEMS
CLAIMING NO LEAD SERVICE LINES**

The owner or operator of all community public water systems must identify and map areas of their distribution system that are known or are likely to contain lead service lines. Systems must submit a copy of the applicable map to the Ohio Department of Health and the Ohio Department of Job and Family Services. Systems must also submit a report to the director containing at least both of the following: (1) The applicable map with narrative, and (2) A list of sampling locations used to collect samples as required by Ohio Revised Code (ORC) Section 6109.121 and any rules adopted thereunder, including contact information for the owner and occupant of each sampling site.

Should a water system determine no lead service lines exist in their distribution system, they must provide information stating they reviewed, at the minimum, historical permit records and local ordinances, distribution maintenance records and information pertaining to installation dates or materials for all services lines. This information must be verified below.

I HEREBY CERTIFY THAT THE FOLLOWING METHOD(S) WERE USED TO DETERMINE NO LEAD SERVICE LINES EXIST IN THIS WATER SYSTEM'S DISTRIBUTION SYSTEM, AS REQUIRED BY ORC 6109.121(F):

LEAD SERVICE LINE VERIFICATION

This PWS states they have no lead service lines and has reviewed the following information (select one or more of the following):

- ☒ Historical permit records and/or local ordinances
- ☐ Distribution maintenance records (i.e. meter replacement, waterline break repairs)
- ☐ Information pertaining to installation dates for all service lines (i.e. after 1986 when lead services lines were banned)
- ☐ Service line material of all service lines is known (i.e. all service lines are known to be PVC)

Wendyl Kandel 3/1/17
Signature of Responsible Person Date
WENDYL KANDEL Supt
Printed Name and Title of Responsible Person

PWS NAME: Berlin Water Co.
PWS ID: OH 3800012
COUNTY: Holmes

For Ohio EPA use only:

Date Verification Rec'd: _____