

**VERIFICATION FORM FOR COMMUNITY PUBLIC WATER SYSTEMS  
CLAIMING NO LEAD SERVICE LINES**

The owner or operator of all community public water systems must identify and map areas of their distribution system that are known or are likely to contain lead service lines. Systems must submit a copy of the applicable map to the Ohio Department of Health and the Ohio Department of Job and Family Services. Systems must also submit a report to the director containing at least both of the following: (1) The applicable map with narrative, and (2) A list of sampling locations used to collect samples as required by Ohio Revised Code (ORC) Section 6109.121 and any rules adopted thereunder, including contact information for the owner and occupant of each sampling site.

Should a water system determine no lead service lines exist in their distribution system, they must provide information stating they reviewed, at the minimum, historical permit records and local ordinances, distribution maintenance records and information pertaining to installation dates or materials for all services lines. This information must be verified below.

I HEREBY CERTIFY THAT THE FOLLOWING METHOD(S) WERE USED TO DETERMINE NO LEAD SERVICE LINES EXIST IN THIS WATER SYSTEM'S DISTRIBUTION SYSTEM, AS REQUIRED BY ORC 6109.121(F):

**LEAD SERVICE LINE VERIFICATION**

**This PWS states they have no lead service lines and has reviewed the following information (select one or more of the following):**

- ☐ Historical permit records and/or local ordinances
- ☒ Distribution maintenance records (i.e. meter replacement, waterline break repairs)
- ☒ Information pertaining to installation dates for all service lines (i.e. after 1986 when lead services lines were banned)
- ☐ Service line material of all service lines is known (i.e. all service lines are known to be PVC)

  
\_\_\_\_\_  
Signature of Responsible Person

3/7/17  
\_\_\_\_\_  
Date

John C. Huck, Operator in Charge

\_\_\_\_\_  
Printed Name and Title of Responsible Person

**PWS NAME:** Putnam Community Water

**PWS ID:** OH8400712

**COUNTY:** Washington

**For Ohio EPA use only:**

Date Verification Rec'd: \_\_\_\_\_



Lead Mapping, Test Sites for Lead & Copper

And

Narrative

Putnam Community Water Corporation

March 9<sup>th</sup>, 2017

Putnam Community Water Corporation

920 River Road

Marietta, Ohio 45750

740 373-0975 (Telephone)

740 373-8992 (Fax)

## Putnam Community Water Corporation

### Lead Service Mapping Narrative

Putnam Community Water Corporation (PCW) was formed in the early 1950s to service the growing need for water in the Devola Area. Currently two wells located at 920 River Road are used to serve nearly 930 taps in this area. PCW also uses reverse osmosis technology to remove contaminants from the raw water. There are mainly two sizes of lines that are used in the distribution system. They are six inch and eight inch main lines. The mains consist of cast iron, ductile iron, transite, and PVC. PCW mainly uses two types of material for the service lines from the main to the curb stop. Those materials are either copper tubing or high density poly ethylene (HDPE) pipe. However, copper tubing used may fall under "may have 8% lead content". The water department does not have any further jurisdiction over the service line from the outlet side of the curb stop to the interior plumbing within a home or building. PCW informs our customers of the danger of lead but is unable to enforce any changes in the interior plumbing.

A map of our distribution system shows the details of the transmission mains. Currently, PCW does not keep maps of the service lines

The color coding of the mains is as follows:

Green: Non Lead

Yellow: May contain lead

Red: Sites that have tier 1 houses

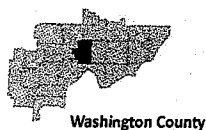
Putnam Community Water performs regular lead & copper sampling in accordance with the Ohio EPA guidelines. The lead & copper rules states that sampling must first occur at an identified tier 1 site. These would be homes that had known lead service lines or were constructed prior to 1986. To the best of our knowledge through upgrades and improvements there are no homes in our distribution system that have lead service lines. These homes constructed prior to 1986 would have the best chance of having used solder that may have contained lead or plumbing fixtures that contained lead also. PCW used building permits that were issued during the time frame of 1982 and 1986 to identify tier 1 homes.

Buildings built prior to 1998 or that used plumbing material or solder manufactured before 1998 may have materials with a greater than 8% lead content and are at higher risk of contributing lead to the drinking than materials manufactured after 1998. Building or homes constructed after 2014 were required to have less .25% lead by weight and therefore would have the lowest risk for contributing lead

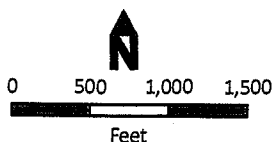
to the drinking water. However, it should be noted, although prohibited, some use of leaded solder or lead components may have occurred after the prohibitions became effective.

Putnam Community Water also used Washington County tax maps to identify when buildings or homes were constructed in our distribution system. Approximately 86% or 799 of the residences in our service area were either constructed or added to our distribution prior to 1998. Since a majority of these homes were constructed prior to the low lead law becoming effective they may have solder or fixtures that contain lead. Another 13% or 121 were either constructed or added to our system from 1998 – 2014. Those homes still may have small amounts of lead in the fixtures. The other 1% or 10 homes were constructed after 2014. These homes or residences should not contain any amount of lead.

# Putnam Water - Public Water System Inventory



● Sample Sites  
— Non-Lead



Map Copyright Buckeye Hills - Hocking Valley Regional Development District, January 2017  
Map Created by Dru Sexton  
For questions about data sources contact a GIS Specialist at Buckeye Hills  
<http://www.buckeyehills.org> | 740.374.9436

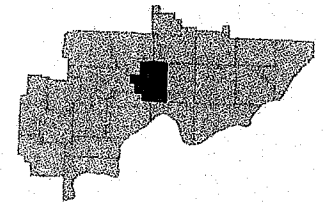


# Marshall Road - Tier 1 Sites



PCW has currently identified that there are no main lines in the main distribution system that contain lead. PCW currently does not map the individual service lines to homes and therefore in some instances cannot make a determination on the material of the service line itself. PCW does not have jurisdiction after the curb shutoff and therefore has very limited knowledge of the material used after that point. PCW does have a corrosion control program and orthophosphate is injected in the water to help in lining the inner walls of the water distribution system to prevent the corrosion of the pipes. PCW does sampling in accordance of the Lead & Copper rule established by the Ohio EPA and provides an annual report to our consumers on the condition of our water quality.

## Washington County



● Sample Sites

— Non-Lead

□ Parcels



0 70 140 210  
Feet

Map Copyright Buckeye Hills - Hocking Valley Regional Development District, January 2017

Map Created by Dru Sexton  
For questions about data sources contact a GIS Specialist at Buckeye Hills  
<http://www.buckeye-hills.org> | 740.374.9436



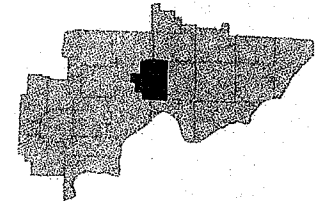
**Buckeye Hills - Hocking Valley**  
Regional Development District

# Masonic Park Road - Tier 1 Sites



PCW has currently identified that there are no main lines in the main distribution system that contain lead. PCW currently does not map the individual service lines to homes and therefore in some instances cannot make a determination on the material of the service line itself. PCW does not have jurisdiction after the curb shutoff and therefore has very limited knowledge of the material used after that point. PCW does have a corrosion control program and orthophosphate is injected in the water to help in lining the inner walls of the water distribution system to prevent the corrosion of the pipes. PCW does sampling in accordance of the Lead & Copper rule established by the Ohio EPA and provides an annual report to our consumers on the condition of our water quality.

## Washington County



● Sample Sites

— Non-Lead

□ Parcels



0 50 100 150  
Feet

Map Copyright Buckeye Hills - Hocking Valley Regional Development District, January 2017

Map Created by Dru Sexton  
For questions about data sources contact a GIS Specialist at Buckeye Hills  
<http://www.buckeyehills.org> | 740.374.9436



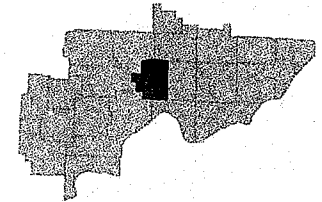
**Buckeye Hills - Hocking Valley**  
Regional Development District

# Keyser Street & Alden Avenue - Tier 1 Sites



PCW has currently identified that there are no main lines in the main distribution system that contain lead. PCW currently does not map the individual service lines to homes and therefore in some instances cannot make a determination on the material of the service line itself. PCW does not have jurisdiction after the curb shutoff and therefore has very limited knowledge of the material used after that point. PCW does have a corrosion control program and orthophosphate is injected in the water to help in lining the inner walls of the water distribution system to prevent the corrosion of the pipes. PCW does sampling in accordance of the Lead & Copper rule established by the Ohio EPA and provides an annual report to our consumers on the condition of our water quality.

## Washington County



● Sample Sites

— Non-Lead

□ Parcels



0 110 220 330  
Feet

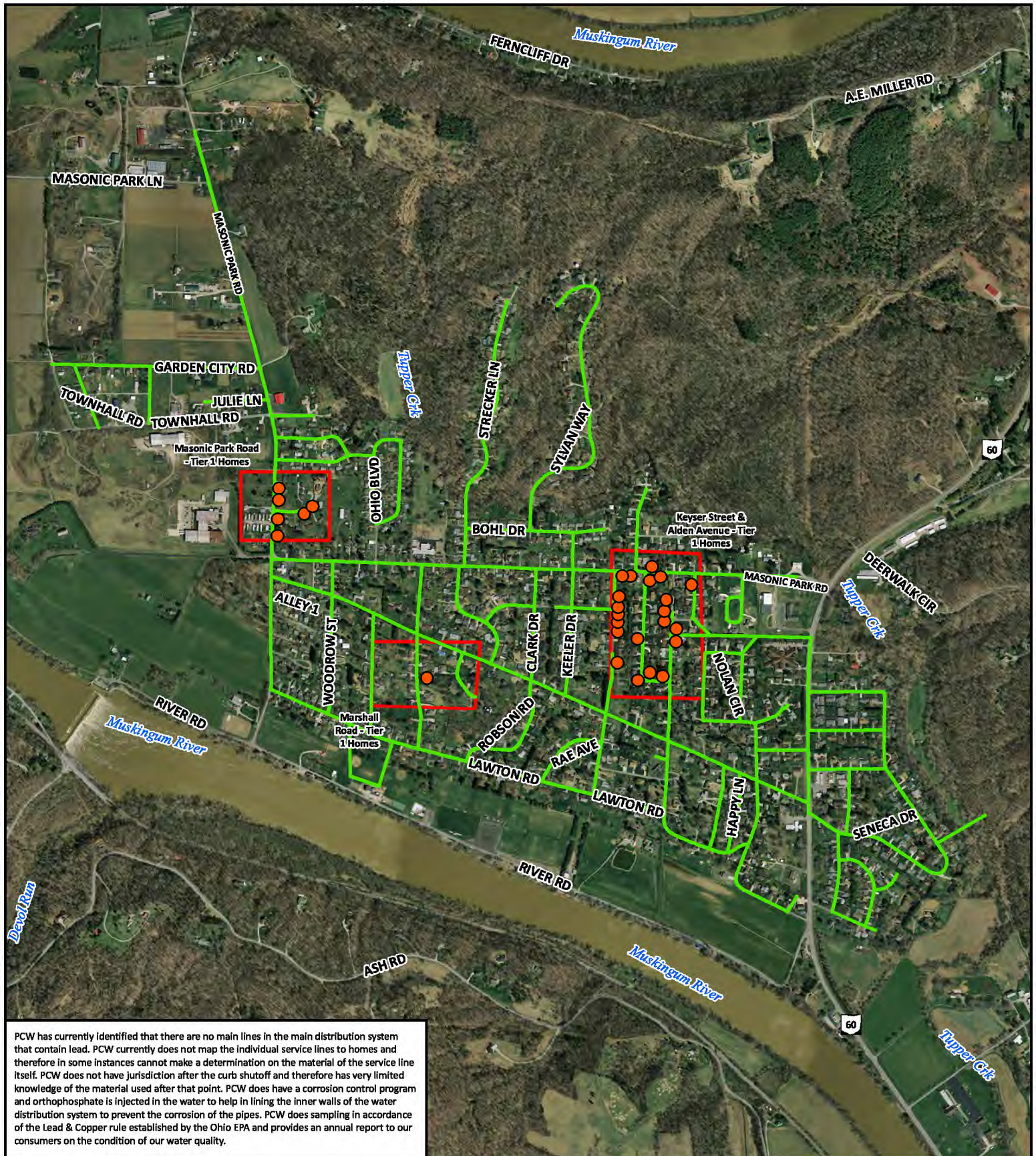
Map Copyright Buckeye Hills - Hocking Valley Regional Development District, January 2017  
Map Created by Dru Sexton  
For questions about data sources contact a GIS Specialist at Buckeye Hills  
<http://www.buckeyehills.org> | 740.374.9436



Buckeye Hills - Hocking Valley  
Regional Development District

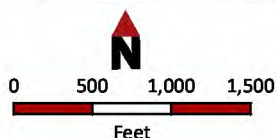


# Putnam Water - Public Water System Inventory



Washington County

- Sample Sites
- Non-Lead



Map Copyright Buckeye Hills - Hocking Valley  
Regional Development District, January 2017  
Map Created by Dru Sexton  
For questions about data sources contact a  
GIS Specialist at Buckeye Hills  
<http://www.buckeyeohills.org> | 740.374.9436





# Masonic Park Road - Tier 1 Sites



PCW has currently identified that there are no main lines in the main distribution system that contain lead. PCW currently does not map the individual service lines to homes and therefore in some instances cannot make a determination on the material of the service line itself. PCW does not have jurisdiction after the curb shutoff and therefore has very limited knowledge of the material used after that point. PCW does have a corrosion control program and orthophosphate is injected in the water to help in lining the inner walls of the water distribution system to prevent the corrosion of the pipes. PCW does sampling in accordance of the Lead & Copper rule established by the Ohio EPA and provides an annual report to our consumers on the condition of our water quality.

## Washington County



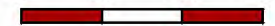
● Sample Sites

— Non-Lead

□ Parcels



0 50 100 150



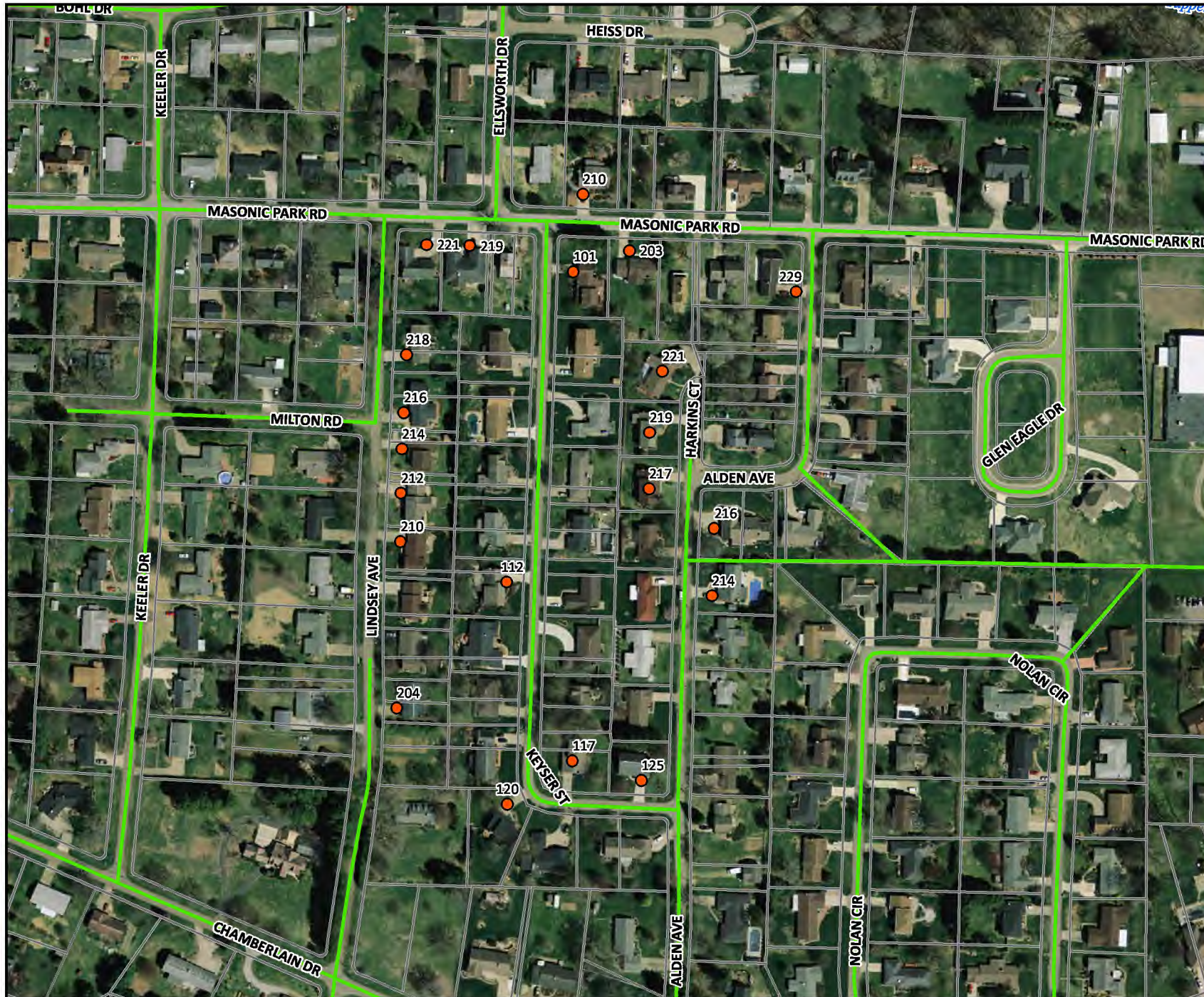
Feet

Map Copyright Buckeye Hills - Hocking Valley Regional Development District, January 2017

Map Created by Dru Sexton  
For questions about data sources contact a GIS Specialist at Buckeye Hills  
<http://www.buckeyeohio.org> | 740.374.9436



# Keyser Street & Alden Avenue - Tier 1 Sites



PCW has currently identified that there are no main lines in the main distribution system that contain lead. PCW currently does not map the individual service lines to homes and therefore in some instances cannot make a determination on the material of the service line itself. PCW does not have jurisdiction after the curb shutoff and therefore has very limited knowledge of the material used after that point. PCW does have a corrosion control program and orthophosphate is injected in the water to help in lining the inner walls of the water distribution system to prevent the corrosion of the pipes. PCW does sampling in accordance of the Lead & Copper rule established by the Ohio EPA and provides an annual report to our consumers on the condition of our water quality.

## Washington County



● Sample Sites

— Non-Lead

□ Parcels



0 110 220 330

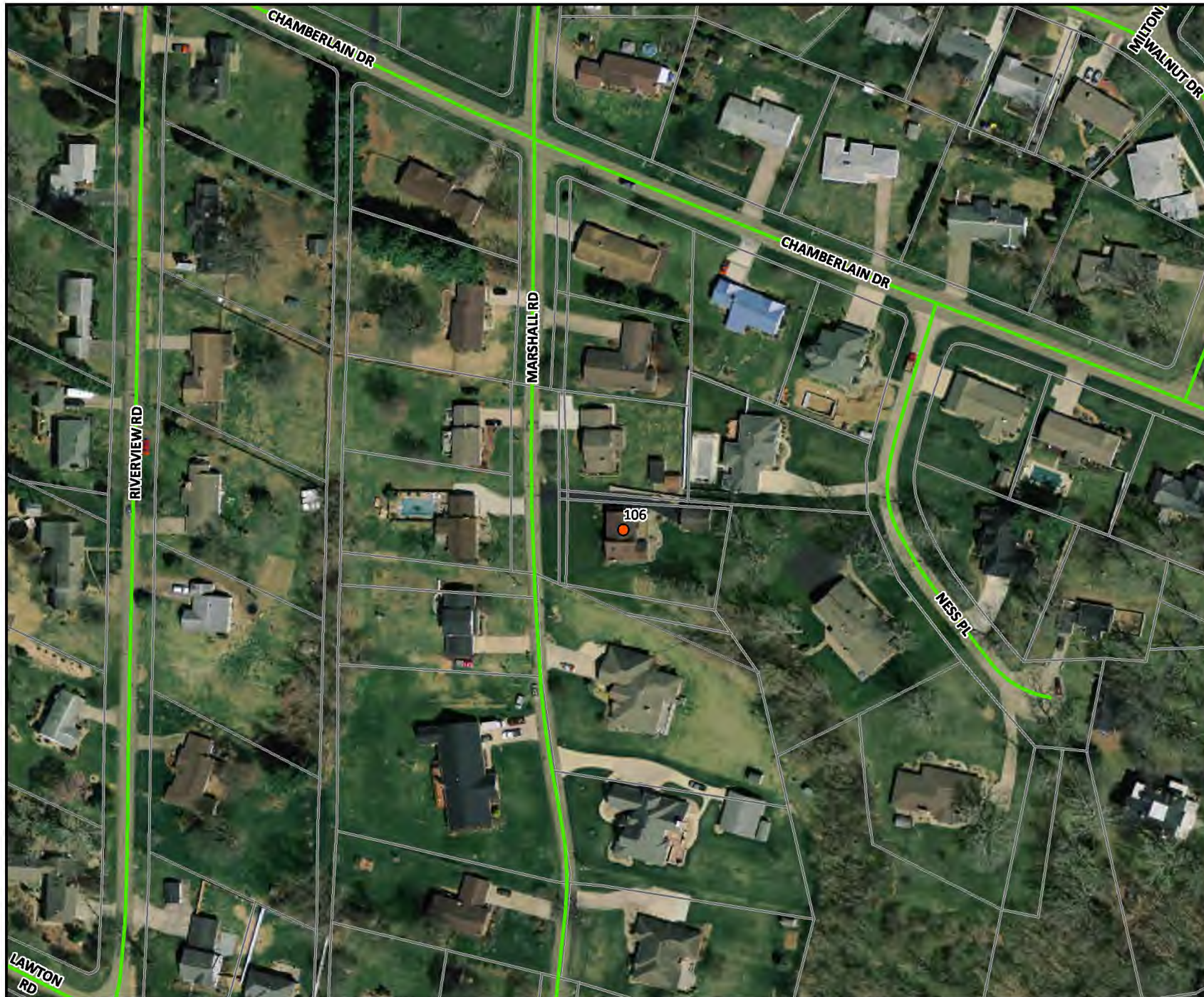
Feet

Map Copyright Buckeye Hills - Hocking Valley Regional Development District, January 2017

Map Created by Dru Sexton  
For questions about data sources contact a GIS Specialist at Buckeye Hills  
<http://www.buckeyehills.org> | 740.374.9436



# Marshall Road - Tier 1 Sites



PCW has currently identified that there are no main lines in the main distribution system that contain lead. PCW currently does not map the individual service lines to homes and therefore in some instances cannot make a determination on the material of the service line itself. PCW does not have jurisdiction after the curb shutoff and therefore has very limited knowledge of the material used after that point. PCW does have a corrosion control program and orthophosphate is injected in the water to help in lining the inner walls of the water distribution system to prevent the corrosion of the pipes. PCW does sampling in accordance of the Lead & Copper rule established by the Ohio EPA and provides an annual report to our consumers on the condition of our water quality.

## Washington County



● Sample Sites

— Non-Lead

□ Parcels



0 70 140 210

Feet

Map Copyright Buckeye Hills - Hocking Valley Regional Development District, January 2017

Map Created by Dru Sexton  
For questions about data sources contact a GIS Specialist at Buckeye Hills  
<http://www.buckeyehills.org> | 740.374.9436