

Potable water supply information

Johnsonite, 16910 Munn Road, Auburn Twp, Geauga County, OH
PWS OH2840112
Monday , 3/6/17

Water starts at the area by chiller ACME. North West of the building.

Main shut off located in this area and tagged.

Compounding and Shop Floor restrooms

- Process through UV system then thru two Well Xtrol tanks.
- Labeled as shop restroom potable shut off,
- Feeds to the west, supplying the ladies and men's restroom. 2" PVC feed line over to restrooms and then changes to ½" Pex line feeding the toilets and urinals, as well as the hot water heater and water softener system for the boilers located in the boiler room. Pex line supplies the eye station in boiler room.
- All lines are 2" PVC and at the restrooms reduced to ½" or 5/16" Pex line for the sink supply.
-
- Main feed line for compounding is copper approx., 60' then changes to ½" pex for eyewash. Copper line feeds the outside swamp coolers on the roof.

Lunch room water supply

- Starts at the UV system 2" PVC line heads east for about 15' then turns North for 70' then heads east for 117' then reduces to 1" PVC.
- Then branches off for outside water tap (Pex Line). Then feeds cold water and hot line over to the hot water heater for sink in lunchroom.
- Branches off again to feed inline filter for coffee vending machine. (Pex line)

Back at the 70' Mark

- Start back at the 70' mark of the 2" line. Head north another 60' and has a shut off valve. tee's off to east to supply utility sink (all PVC and Pex line)
- This also supplies water to the hot water hear and die cleaning oven in die shop. (all 1" and ½" Pvc and Pex line)

Potable water supply information

Johnsonite, 16910 Munn Road, Auburn Twp, Geauga County, OH

PWS OH2840112

Monday , 3/6/17

Front office feed line

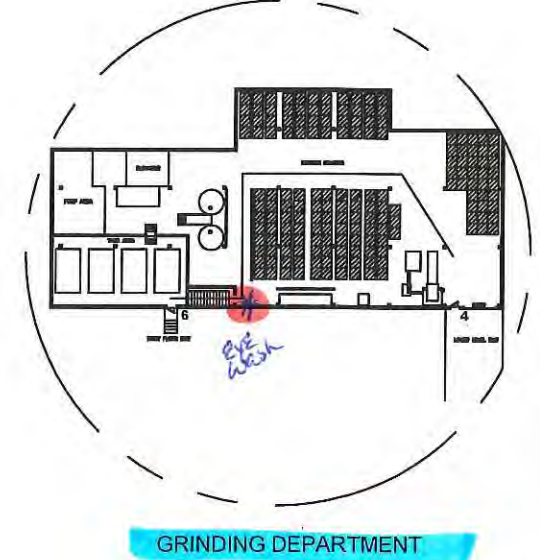
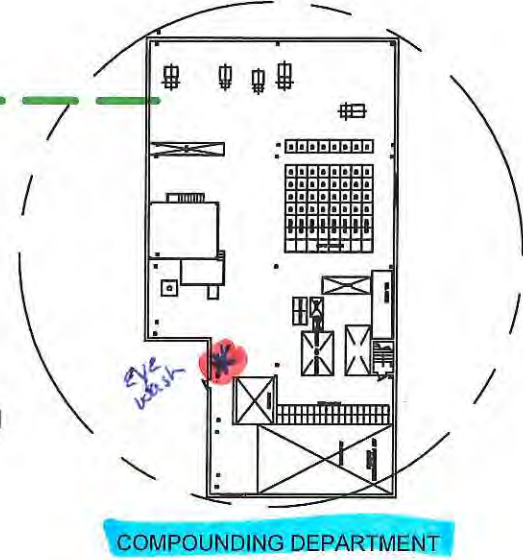
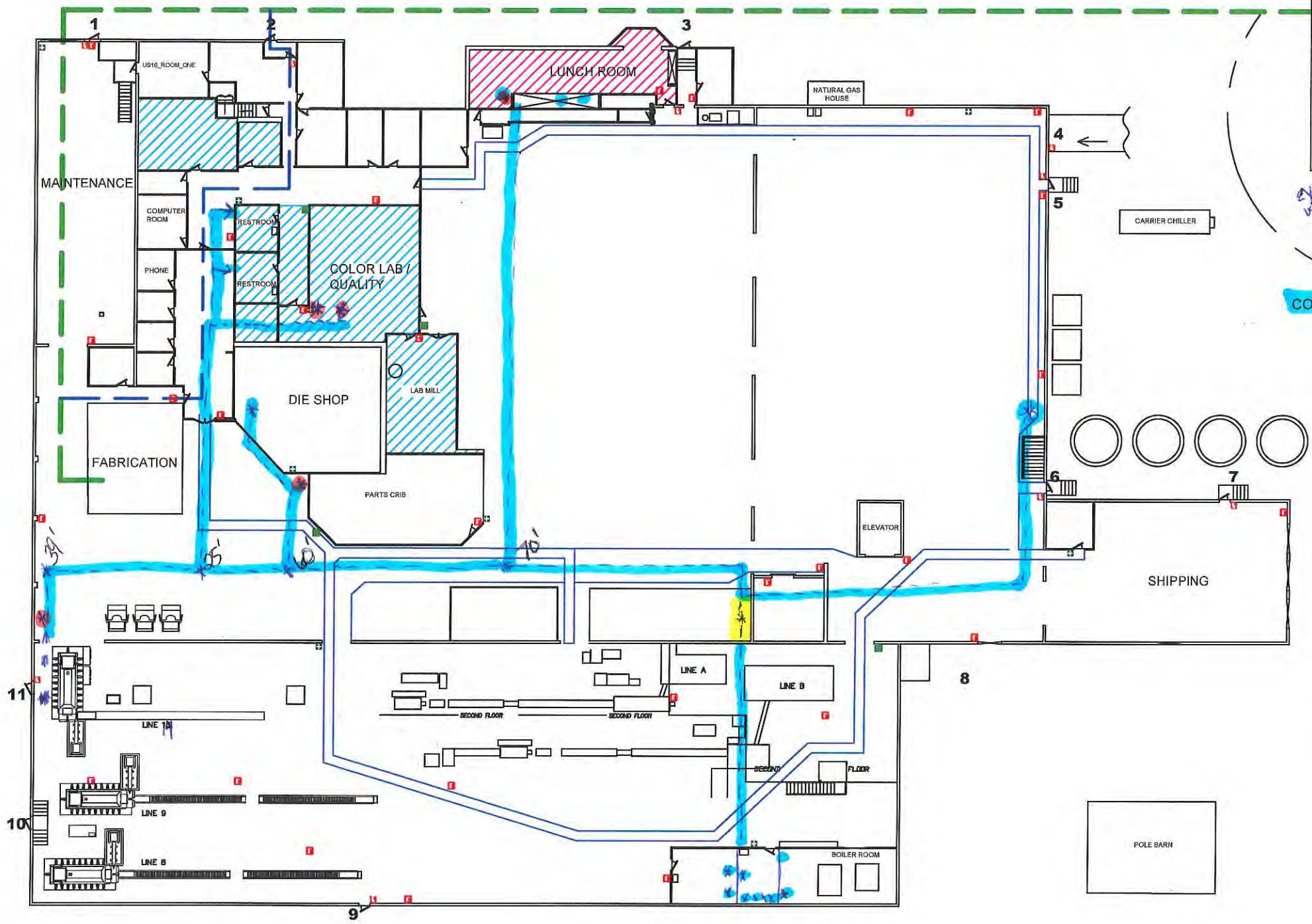
- Back at the 60' shut off ,this line continues north for 25' then heads east (shut off) to office area kitchenette (Pex line).
- Continues south feeding the women's and men's restrooms. (All Pex line).
- Feed lab sink and Eye wash station, this line all so (Pex line)
- Some of the line for feed to the toilets and urinals is still copper. (Pex line to copper)

North Wall

- Back at the 60' shut off, head north for 39' this then supplies the water to the Eye wash shower unit and IR system used for battery water. All line in this area are 1' PVC and ½" Pex line.

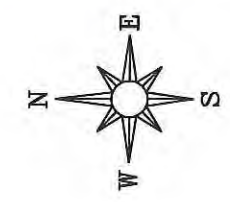
CHAGRIN FALLS MANUFACTURING FACILITY

REVISION		
REV.	DATE	DESCRIPTION
B	5-18-16	UPDATED FOR LINE 2
C	12-8-16	UPDATED LINE 13 AND CONTROL DOC.
D	1/28/17	UPDATED COMPOUNDING LAYOUT



LEGEND	
Symbol	Reference
	Primary Evacuation Route (Extruder "E" and Take-off "T" areas)
	Alternate Evacuation Route (Extruder "E" and Take-off "T" areas)
	Muster Location
	Fire Extinguisher
	Fire Pull Station
	Tornado Shelter
	Power Outage Location
	AED Location
	First Aid Kit Location

1" PVC Pot SPRIT *
Sink or Eyedash *
STARTS *



Contact: Dean Sullivan
440-279-8154

IN CASE OF FIRE	IN CASE OF TORNADO	IN CASE OF POWER OUTAGE
<ol style="list-style-type: none"> 1. Page x9301 to notify there is a fire in the building and activate the Fire Alarm Manual Pull Station. 2. Walk to the nearest exit. 3. Leave the building and proceed to the Muster Location at the South end of the parking lot for the headcount. 4. Call 911 from a safe location. 5. Do not return to the building until the "All Clear" is given. 6. Use the Fire Extinguisher as an egress tool. 	<ol style="list-style-type: none"> 1. If the notice to take cover is issued by Site Management, press emergency stops, if possible. 2. All forklift traffic shall be stopped. 3. All personnel, visitors and contractors shall enter the designated shelter areas. 4. Headcount will be taken. 5. Site Managers shall check respective departments for unaccounted for employees. 6. Do not leave shelter until the "All Clear" is given. 	<ol style="list-style-type: none"> 1. All forklifts shall stop. 2. Operators shall open all equipment (i.e. extruders) 3. All associates are to report to the lunch room. 4. Headcount shall be taken. 5. All associates are to remain in the lunch room until power is restored or instructed to evacuate the building by the Team Leader.

Tarkett THE ULTIMATE FLOORING EXPERIENCE

ALL RIGHTS RESERVED, NO PART OF THIS DOCUMENT OR ITS ORIGINAL DATA FILE MAY BE REPRODUCED OR TRANSMITTED IN ANY FORM OR BY ANY MEANS, ELECTRONIC OR MECHANICAL WITHOUT PERMISSION IN WRITING FROM JOHNSTON

DESCRIPTION: **PLANT LAYOUT (FABRICATION EVACUATION ROUTE)**

DRAWN BY: C. JOHNSTON SCALE: 1/16"=1'-0"

DATE: 12/28/15 PART NO: 3547-SAFD