



Village of West Salem

Public Water System Lead (Pb) Components

PWSID# OH8504311
Prepared March 2017

To comply with Section 6109.121 of the Ohio Revised Code, enacted in September 2016, the Village of West Salem in Wayne County, Ohio has created the following report and attached map to identify known and potential components of water service lines that contain lead (Pb).

The following information and attached map do not verify the presence of lead in any of the plumbing components or structures shown. The information and map only show the probable or possible locations based on the pipe material that was typically used in the year that structures were built, or by the year that the plumbing component was installed.

RCAP staff and the Village of West Salem Water Department met on February 6th, 2017 to review a map of the service area. No applicable historical maintenance and operation records, tap cards, or as-builts were available to identify lead component locations. No lead service lines (LSLs) have been replaced or observed by the Village West Salem Water Department to date.

Public and Private Ownership of Service Lines

The Village owns and maintains service lines from the water distribution mains up to the curb stops for each water customer. The remainder of each service line from the curb stop to the building is the responsibility of the property owner.

The tables below provide information about the possibility of lead service lines and use of leaded plumbing materials to the customers West Salem serves. The year the structure was built, or the year the plumbing component was installed determines which category it falls into.

Public Service Line Lead Probability		
Value	Public Lines #	% of System
Confirmed Non-Lead	558	82.91%
≤ 8% Lead Alloy (1998-2013)	5	0.74%
Very Low (1981-1997)	23	3.42%
Mild (1951-1980)	37	5.50%
Moderate (1921-1950)	9	1.34%
High (1825-1920)	24	3.57%
No Data	17	2.53%

Private Service Line Lead Probability		
Value	Private #	% of System
Confirmed Non-Lead	558	82.91%
≤ 8% Lead Alloy (1998-2013)	5	0.74%
Very Low (1981-1997)	23	3.42%
Mild (1951-1980)	37	5.50%
Moderate (1921-1950)	9	1.34%
High (1825-1920)	24	3.57%
No Data	17	2.53%

The amount of high and moderate probability services shown in the tables above is likely to be lower as the operators have only seen old galvanized lines throughout the older parts of town.

Distribution System

Within the distribution system, none of the water main pipes themselves are known to contain any lead, however, there are joints, valves, and fittings within the system that may contain lead.

The Village of West Salem has approximately 17.92 miles of water main lines. The table below shows which lines are likely to contain lead solder, valves, or fittings. The material and age of the pipe determines which category it falls into.

Probability of Leaded Components in Water Mains		
Lead in Water Main Materials	Feet of Pipe	% of System
Probable (material and age typical of pre-regulation)	10459.78	11.05%
Improbable (material and age typical of post-regulation)	84183.41	88.95%

Water Meters and Indoor Plumbing

Water meters at each customer location may contain more than 8% lead. Meters installed after 1998 may contain up to 8% lead. Meters installed after 2014 will have less than 0.25% lead.

Buildings in Ohio built prior to 1998 or that use plumbing material or solder manufactured before 1998 may have materials with greater than 8% lead and are at a higher risk of contributing lead to the drinking water than materials manufactured after 1998.

Buildings built and plumbing materials manufactured after 2014 were required to have less than 0.25% lead by weight and have the lowest risk for contributing lead to the drinking water. It should be noted however that, although prohibited, some use of leaded solder or leaded components may have occurred after the prohibitions became effective.

Customer Self-Reporting

The information on this map regarding privately owned service lines is based on the limited information from the water system staff and Wayne County building and parcel data. Property owners are encouraged to inspect their own service lines entering the building if these are in anyway exposed, and notify the Village of West Salem if they have determined whether or not a lead service line exists. Please contact the Water Billing Clerk by calling (419)853-4109 or sending an email to rwitucki@westslemvillage.com. A representative from the water department will contact you to confirm and update this information for the next map release.

Contacts and Resources

If you have questions about known and potential lead components within the Village of West Salem Public Water System, please contact:

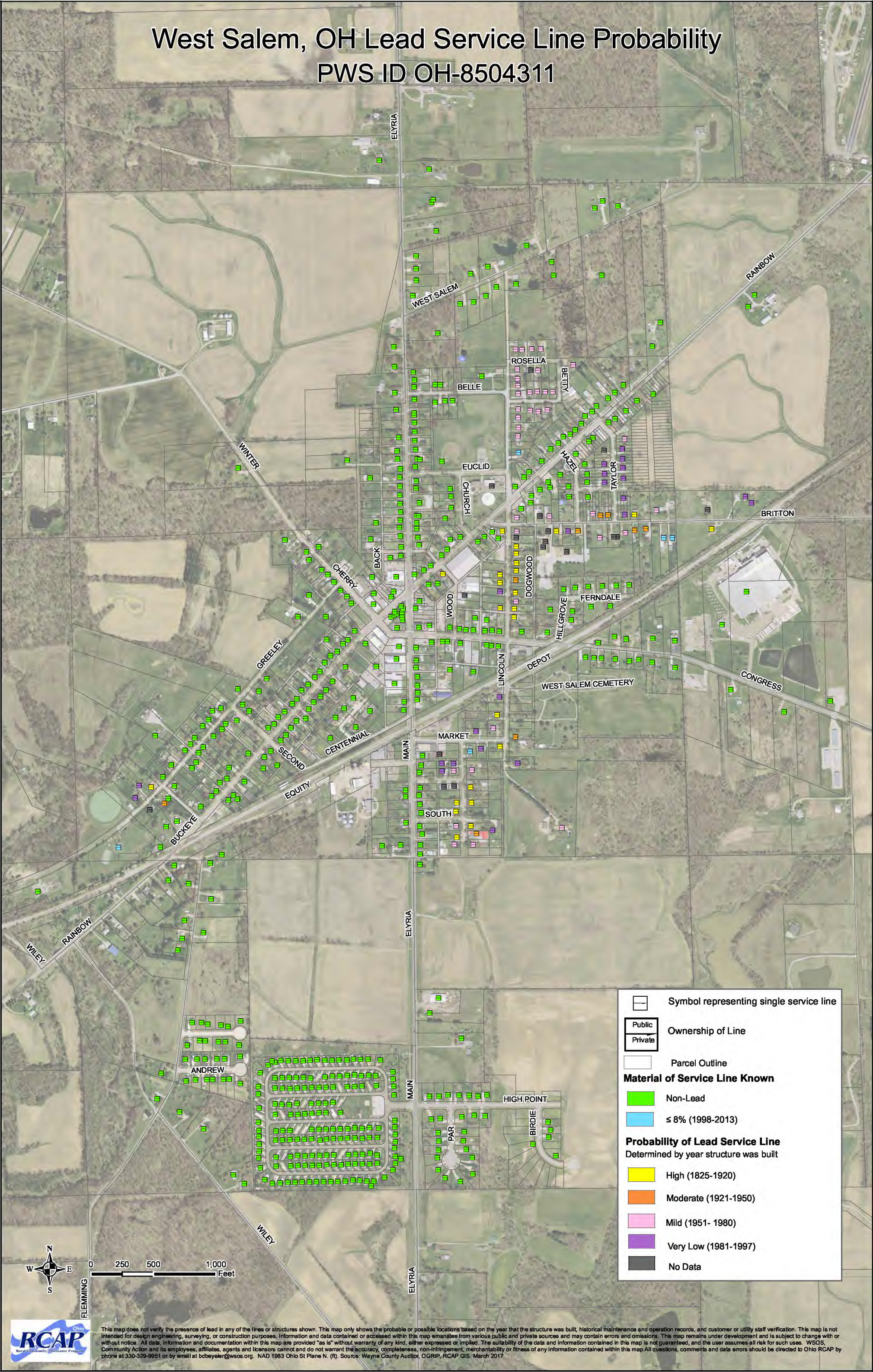
West Salem Village Administrator
West Salem, Ohio
Phone: 419-853-4400
E-mail: rwitucki@westsalemvillage.com

For more information about lead service lines and their removal, we recommend the following resources:

- **The Lead Service Line Replacement Collaborative**
<http://www.lslr-collaborative.org/resources-for-concerned-consumers.html>
- **Ohio EPA 'Learn About Lead' page** <http://epa.ohio.gov/pic/lead.aspx>
- **US EPA Lead in Drinking Water Information Page**
<https://www.epa.gov/ground-water-and-drinking-water/basic-information-about-lead-drinking-water>

West Salem, OH Lead Service Line Probability

PWS ID OH-8504311



This map does not verify the presence of lead in any of the lines or structures shown. This map only shows the probable or possible locations based on the year that the structure was built, historical maintenance and operation records, and customer or utility staff verification. This map is not intended for design engineering, surveying, or construction purposes. Information and data contained or accessed within this map emanates from various public and private sources and may contain errors and omissions. This map remains under development and is subject to change with or without notice. All data, information and documentation within this map are provided "as is" without warranty of any kind, either expressed or implied. The suitability of the data and information contained in this map is not guaranteed, and the user assumes all risk for such uses. WSQS, Community Action and its employees, affiliates, agents and licensors cannot and do not warrant the accuracy, completeness, non-infringement, merchantability or fitness of any information contained within this map. All questions, comments and data errors should be directed to Ohio RCAP by phone at 330-329-9951 or by email at bdbeyle@wsos.org. NAD 1983 Ohio State Plane N. (ft). Source: Wayne County Auditor, OGRIP, RCAP GIS. March 2017