



Vaughn, Coast & Vaughn, Inc.
154 S. Marietta Street St. Clairsville, Ohio 43950 Phone: (740) 695-7256 Fax: (740) 695-2203

04/28/17
S.F.B.

**VAUGHN
COAST &
VAUGHN** engineers

2017 MAR -9 AM 10:28

March 6, 2017

Mr. Taylor Carpenter
Ohio Environmental Protection Agency
Southeast District Office
2195 Front Street
Logan, OH 43138-9031

Re: Village of Flushing
Lead Service Line Mapping

Dear Mr. Carpenter:

On behalf of the Village of Flushing, we have enclosed one disk of the Flushing water distribution system as-built drawings enhanced to indicate water service line and house plumbing material designations. This submittal satisfies the January 6, 2017 Guidelines for Lead Mapping in Distribution Systems directive which is due March 9, 2017. The drawings on the disk are in a PDF format originally setup for printing on 11x17 size paper.

Additional disks were sent per the guidelines to the Ohio Dept. of Health and the Ohio Dept. of Job and Family Services.

If you have any questions, please contact our office.

Very truly yours,

VAUGHN, COAST & VAUGHN, INC.

Jeffrey A. Vaughn, P.E.

JAV/jh

Enc.

c: Joe Knight/Village of Flushing
Lead Program/6th Floor/ODH
Office of Family Assistance/Bureau of Child Care Licensing and Monitoring/ODJFS

VILLAGE OF FLUSHING
PWS 0700912
Belmont County, Ohio

CEPA
SE01

2017 MAR -9 AM 10:28

In June 2016, House Bill (HB) 512 was passed to enact section 6109.121 of the Ohio Revised Code to create requirements governing lead and copper testing for community and non-transient non-community public water systems and to revise law governing lead contamination from plumbing and fixtures. The new law also requires community water systems to identify and map areas of their distribution systems that are known or likely to contain lead service lines. The community water systems must also identify and provide a description of the characteristics of buildings served by the system that may contain lead solder, fixtures or pipes.

In accordance with HB512, the Village of Flushing, PWS 0700912, worked with their engineering consultant to produce an overall water system map from the 2012 water distribution system replacement project. The map includes the location of the distribution system with color coded lines that indicate type of main line material, approximate year of installation and other system features. The map also includes lead and copper sample site locations. Due to the short timeframe between final EPA guidance being issued and the deadline for submission of the map, the service line materials are unknown in many areas. The service lines installed as part of the 2012 project are polyethylene (PE) piping on the public side. The service line material on the private side is unknown throughout the village. The village will seek customer input through a fixture questionnaire to help identify private service line materials. In addition, village personnel will begin to collect additional service line information during repairs, replacements, service requests, etc. As information is gathered, the map will be updated accordingly.

EPA guidance provides the following: Based on amendments to the Safe Drinking Water Act (SDWA) and Ohio Plumbing Code, the age of a building or the age of a re-plumbing are indicators of the plumbing materials. Buildings in Ohio built prior to 1998 or that use plumbing material or solder manufactured before 1998 may have materials with greater than 8% lead and are a higher risk of contributing lead to the drinking water than materials manufactured after 1998. In addition, buildings built and plumbing materials manufactured after 2014 were required to have less than 0.25% lead by weight and have the lowest risk for contributing lead to drinking water. It should be noted however that, although prohibited, some use of leaded solder or leaded components may have occurred after the prohibitions became effective.

With that guidance in mind, it is likely that plumbing materials, on the private (customer) side contain components that exceed the 8% lead and are at a higher risk. The Village of Flushing has many old buildings. The Village of Flushing was platted in 1813 and incorporated in 1849. Again the village is working to compile the specific information from their customers to better determine those that may be in that category.

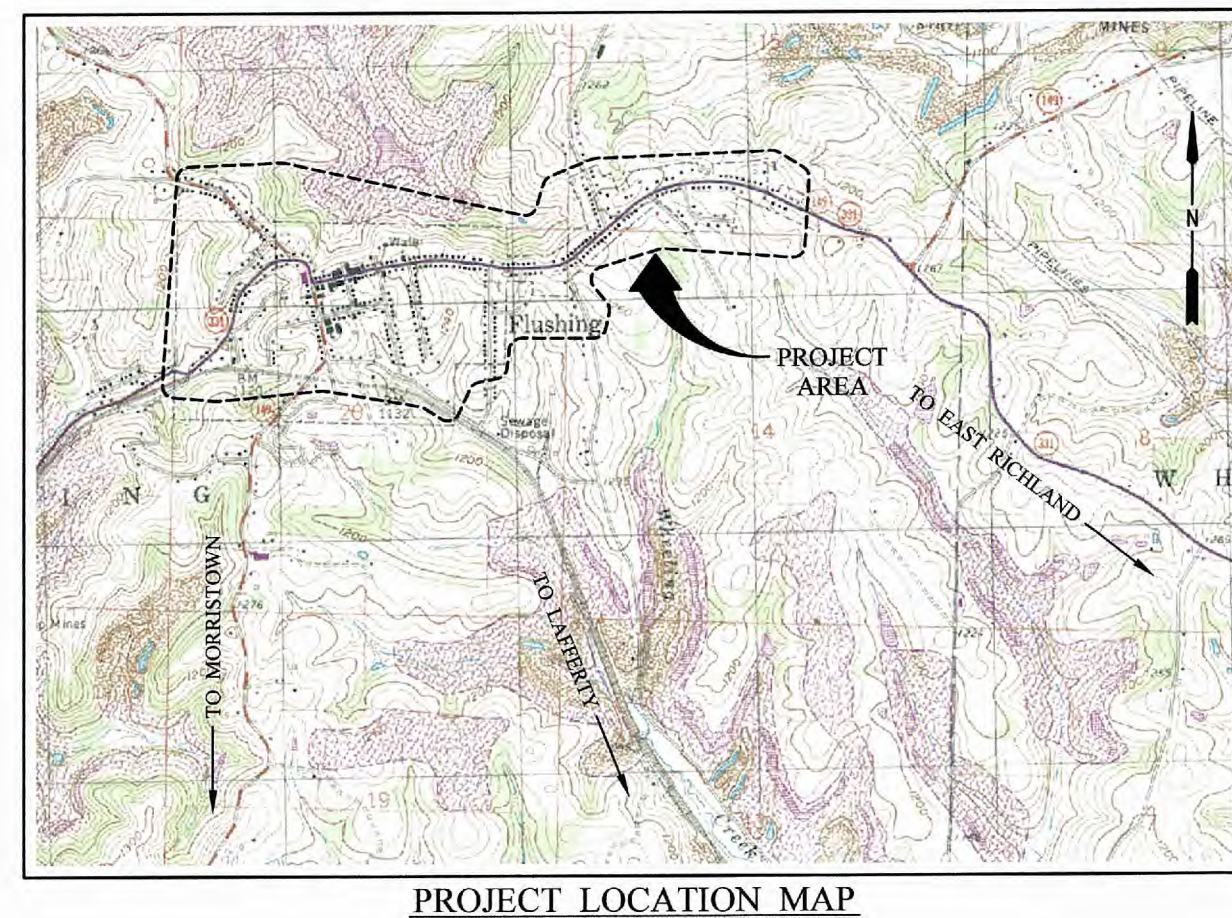
VILLAGE of FLUSHING

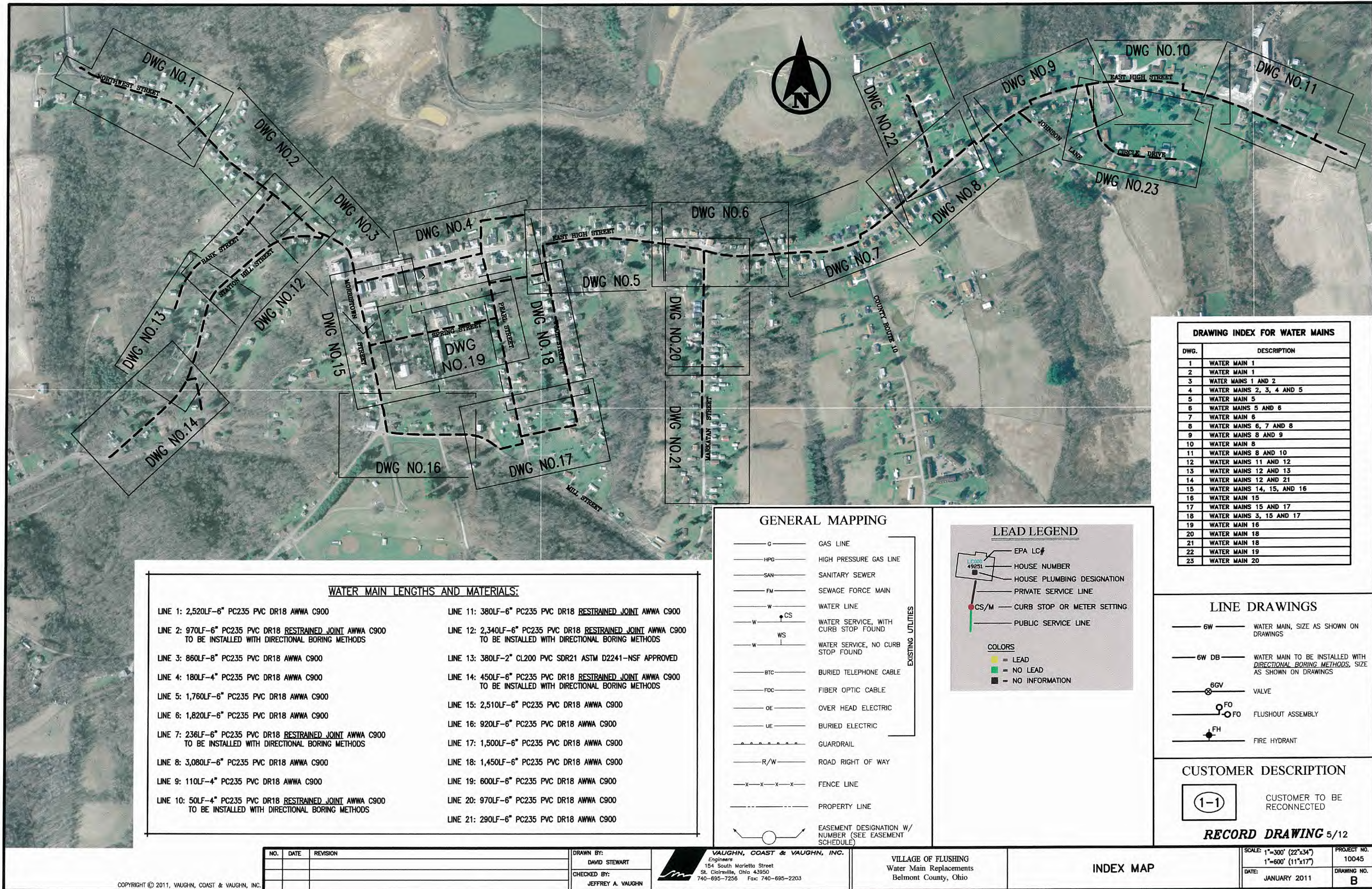
Belmont County, Ohio

PWS I.D. #OH0700912

Water Main Replacements

LEAD MAPPING





DRAWING INDEX FOR WATER MAINS	
DWG.	DESCRIPTION
1	WATER MAIN 1
2	WATER MAIN 1
3	WATER MAINS 1 AND 2
4	WATER MAINS 2, 3, 4 AND 5
5	WATER MAIN 5
6	WATER MAINS 5 AND 6
7	WATER MAIN 6
8	WATER MAINS 6, 7 AND 8
9	WATER MAINS 8 AND 9
10	WATER MAIN 8
11	WATER MAINS 8 AND 10
12	WATER MAINS 11 AND 12
13	WATER MAINS 12 AND 13
14	WATER MAINS 12 AND 21
15	WATER MAINS 14, 15, AND 16
16	WATER MAIN 15
17	WATER MAINS 15 AND 17
18	WATER MAINS 3, 15 AND 17
19	WATER MAIN 16
20	WATER MAIN 18
21	WATER MAIN 18
22	WATER MAIN 19
23	WATER MAIN 20

WATER MAIN LENGTHS AND MATERIALS:	
LINE 1: 2,520LF-6" PC235 PVC DR18 AWWA C900	LINE 11: 380LF-6" PC235 PVC DR18 <u>RESTRAINED JOINT</u> AWWA C900
LINE 2: 970LF-6" PC235 PVC DR18 <u>RESTRAINED JOINT</u> AWWA C900 TO BE INSTALLED WITH DIRECTIONAL BORING METHODS	LINE 12: 2,340LF-6" PC235 PVC DR18 <u>RESTRAINED JOINT</u> AWWA C900 TO BE INSTALLED WITH DIRECTIONAL BORING METHODS
LINE 3: 860LF-8" PC235 PVC DR18 AWWA C900	LINE 13: 380LF-2" CL200 PVC SDR21 ASTM D2241-NSF APPROVED
LINE 4: 180LF-4" PC235 PVC DR18 AWWA C900	LINE 14: 450LF-6" PC235 PVC DR18 <u>RESTRAINED JOINT</u> AWWA C900 TO BE INSTALLED WITH DIRECTIONAL BORING METHODS
LINE 5: 1,760LF-6" PC235 PVC DR18 AWWA C900	LINE 15: 2,510LF-6" PC235 PVC DR18 AWWA C900
LINE 6: 1,820LF-6" PC235 PVC DR18 AWWA C900	LINE 16: 920LF-6" PC235 PVC DR18 AWWA C900
LINE 7: 236LF-6" PC235 PVC DR18 <u>RESTRAINED JOINT</u> AWWA C900 TO BE INSTALLED WITH DIRECTIONAL BORING METHODS	LINE 17: 1,500LF-6" PC235 PVC DR18 AWWA C900
LINE 8: 3,080LF-6" PC235 PVC DR18 AWWA C900	LINE 18: 1,450LF-6" PC235 PVC DR18 AWWA C900
LINE 9: 110LF-4" PC235 PVC DR18 AWWA C900	LINE 19: 600LF-6" PC235 PVC DR18 AWWA C900
LINE 10: 50LF-4" PC235 PVC DR18 <u>RESTRAINED JOINT</u> AWWA C900 TO BE INSTALLED WITH DIRECTIONAL BORING METHODS	LINE 20: 970LF-6" PC235 PVC DR18 AWWA C900
	LINE 21: 290LF-6" PC235 PVC DR18 AWWA C900

GENERAL MAPPING	
— G —	GAS LINE
— HPG —	HIGH PRESSURE GAS LINE
— SAN —	SANITARY SEWER
— FM —	SEWAGE FORCE MAIN
— W —	WATER LINE
— W — CS —	WATER SERVICE, WITH CURB STOP FOUND
— W — WS —	WATER SERVICE, NO CURB STOP FOUND
— BTC —	BURIED TELEPHONE CABLE
— FOC —	FIBER OPTIC CABLE
— OE —	OVER HEAD ELECTRIC
— UE —	BURIED ELECTRIC
— — — — —	GUARDRAIL
— R/W —	ROAD RIGHT OF WAY
— X — X — X — X —	FENCE LINE
— — — — —	PROPERTY LINE
— — — — —	EASEMENT DESIGNATION W/ NUMBER (SEE EASEMENT SCHEDULE)

LEAD LEGEND	
— EPA LC# —	EPA LC#
— HOUSE NUMBER —	HOUSE NUMBER
— HOUSE PLUMBING DESIGNATION —	HOUSE PLUMBING DESIGNATION
— PRIVATE SERVICE LINE —	PRIVATE SERVICE LINE
— CS/M —	CURB STOP OR METER SETTING
— PUBLIC SERVICE LINE —	PUBLIC SERVICE LINE
COLORS	
— — — — —	= LEAD
— — — — —	= NO LEAD
— — — — —	= NO INFORMATION

LINE DRAWINGS	
— 6W —	WATER MAIN, SIZE AS SHOWN ON DRAWINGS
— 6W DB —	WATER MAIN TO BE INSTALLED WITH DIRECTIONAL BORING METHODS, SIZE AS SHOWN ON DRAWINGS
— 6GV —	VALVE
— FO —	FLUSHOUT ASSEMBLY
— FH —	FIRE HYDRANT

CUSTOMER DESCRIPTION	
— 1-1 —	CUSTOMER TO BE RECONNECTED
RECORD DRAWING 5/12	

NO.	DATE	REVISION

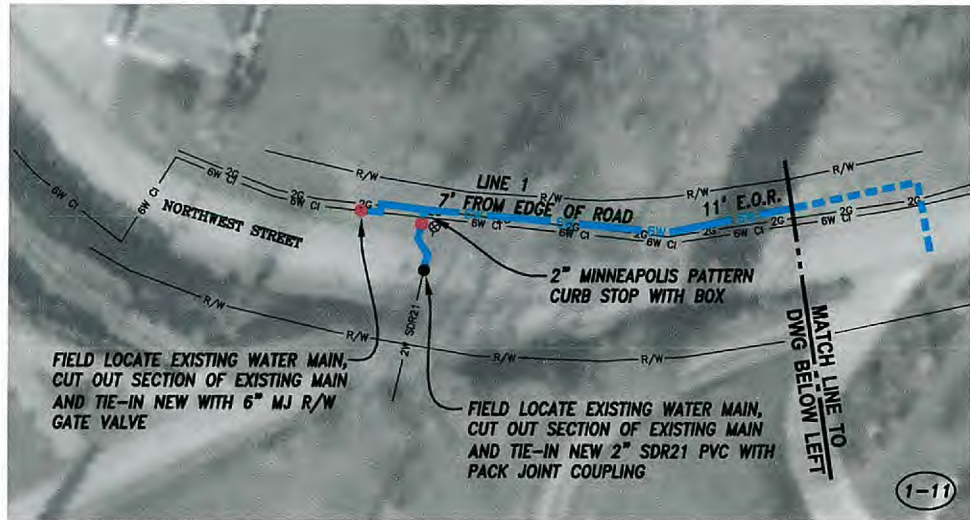
DRAWN BY: DAVID STEWART
CHECKED BY: JEFFREY A. VAUGHN

VAUGHN, COAST & VAUGHN, INC.
Engineers
154 South Marietta Street
St. Clairsville, Ohio 43950
740-695-7256 Fax: 740-695-2203

VILLAGE OF FLUSHING
Water Main Replacements
Belmont County, Ohio

INDEX MAP

SCALE: 1"=300' (22"x34") 1"=600' (11"x17")	PROJECT NO. 10045
DATE: JANUARY 2011	DRAWING NO. B



LEGEND

LC000

49251

EPA LC#

HOUSE NUMBER

HOUSE PLUMBING DESIGNATION

PRIVATE SERVICE LINE

CS/M

CURB STOP OR METER SETTING

PUBLIC SERVICE LINE

COLORS

LEAD

NO LEAD

NO INFORMATION



WATER MAIN MATERIALS:
 LINE 1: 6" PC235 PVC DR18 AWWA C900

RECORD DRAWING 5/12

NO.	DATE	REVISION

DRAWN BY:
DAVID STEWART
 CHECKED BY:
JEFFREY A. VAUGHN

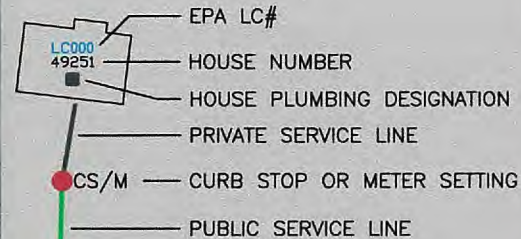
VAUGHN, COAST & VAUGHN, INC.
 Engineers
 154 South Marietta Street
 St. Clairsville, Ohio 43950
 740-695-7256 Fax: 740-695-2203

VILLAGE OF FLUSHING
 Water Main Replacements
 Belmont County, Ohio

**ALONG NORTHWEST STREET
 LINE 1**

SCALE: 1"=30' (22"x34") 1"=60' (11"x17")	PROJECT NO. 10045
DATE: JANUARY 2011	DRAWING NO. 1

LEGEND



COLORS

- LEAD
- NO LEAD
- NO INFORMATION



WATER MAIN MATERIALS:
LINE 1: 6" PC235 PVC DR18 AWWA C900

RECORD DRAWING 5/12

NO.	DATE	REVISION

DRAWN BY:
DAVID STEWART

CHECKED BY:
JEFFREY A. VAUGHN

VAUGHN, COAST & VAUGHN, INC.
Engineers
154 South Marietta Street
St. Clairsville, Ohio 43950
740-695-7256 Fax: 740-695-2203

VILLAGE OF FLUSHING
Water Main Replacements
Belmont County, Ohio

ALONG NORTHWEST STREET
LINE 1

SCALE: 1"=30' (22"x34") 1"=60' (11"x17")	PROJECT NO. 10045
DATE: JANUARY 2011	DRAWING NO. 2

LEGEND

- EPA LC#
- HOUSE NUMBER
- HOUSE PLUMBING DESIGNATION
- PRIVATE SERVICE LINE
- CS/M — CURB STOP OR METER SETTING
- PUBLIC SERVICE LINE

COLORS

- = LEAD
- = NO LEAD
- = NO INFORMATION



WATER MAIN MATERIALS:

- LINE 1: 6" PC235 PVC DR18 AWWA C900
- LINE 2: 6" PC235 PVC DR18 RESTRAINED JOINT AWWA C900 TO BE INSTALLED WITH DIRECTIONAL BORING METHODS

RECORD DRAWING 5/12

NO.	DATE	REVISION

DRAWN BY:
DAVID STEWART

CHECKED BY:
JEFFREY A. VAUGHN

VAUGHN, COAST & VAUGHN, INC.
Engineers
154 South Marietta Street
St. Clairsville, Ohio 43950
740-695-7256 Fax: 740-695-2203

VILLAGE OF FLUSHING
Water Main Replacements
Belmont County, Ohio

ALONG NORTHWEST, MORRISTOWN
AND HIGH STREETS
LINES 1 AND 2

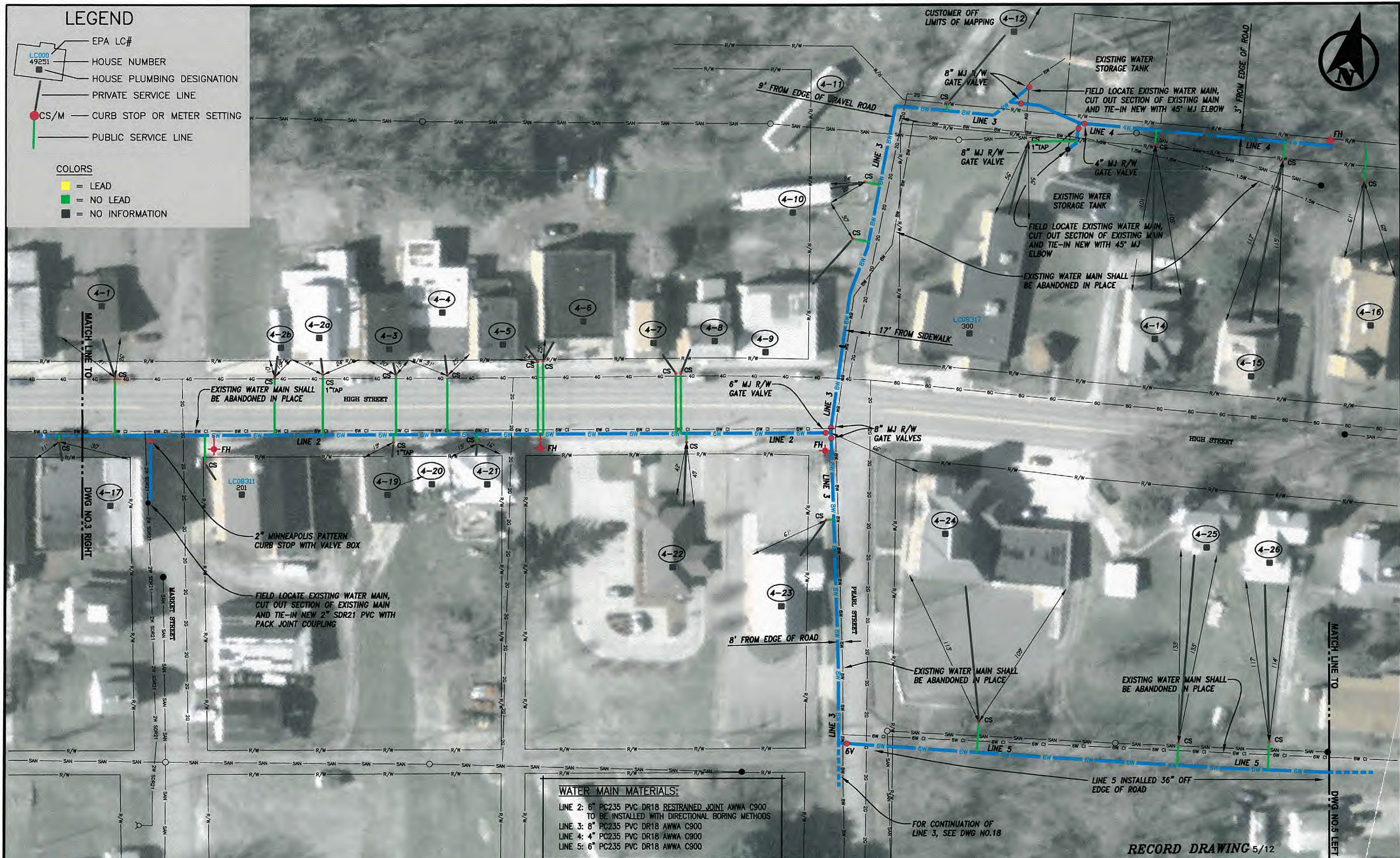
SCALE: 1"=30' (22"x34") 1"=60' (11"x17")	PROJECT NO. 10045
DATE: JANUARY 2011	DRAWING NO. 3

LEGEND

- EPA LC#
- HOUSE NUMBER
- HOUSE PLUMBING DESIGNATION
- PRIVATE SERVICE LINE
- CS/M — CURB STOP OR METER SETTING
- PUBLIC SERVICE LINE

COLORS

- LEAD
- NO LEAD
- NO INFORMATION



NO.	DATE	REVISION

DRAWN BY:
DAVID STEWART

CHECKED BY:
JEFFREY A. VAUGHN

VAUGHN, COAST & VAUGHN, INC.
Engineers
154 South Marietta Street
St. Clairsville, Ohio 43950
740-695-7256 Fax: 740-695-2203

VILLAGE OF FLUSHING
Water Main Replacements
Belmont County, Ohio

ALONG HIGH STREET AND PEARL STREET
LINES 2, 3, 4 AND 5

SCALE: 1"=30' (22"x34") 1"=60' (11"x17")	PROJECT NO. 10045
DATE: JANUARY 2011	DRAWING NO. 4



LEGEND

- EPA LC#
- HOUSE NUMBER
- HOUSE PLUMBING DESIGNATION
- PRIVATE SERVICE LINE
- CS/M — CURB STOP OR METER SETTING
- PUBLIC SERVICE LINE

- COLORS**
- = LEAD
 - = NO LEAD
 - = NO INFORMATION

WATER MAIN MATERIALS:
LINE 5: 6" PC235 PVC DR18 AWWA C900

RECORD DRAWING 5/12

NO.	DATE	REVISION

DRAWN BY:
DAVID STEWART

CHECKED BY:
JEFFREY A. VAUGHN

VAUGHN, COAST & VAUGHN, INC.
Engineers
154 South Marietta Street
St. Clairsville, Ohio 43950
740-695-7256 Fax: 740-695-2203

VILLAGE OF FLUSHING
Water Main Replacements
Belmont County, Ohio

**ALONG EAST HIGH STREET AND WOOD STREET
LINE 5**

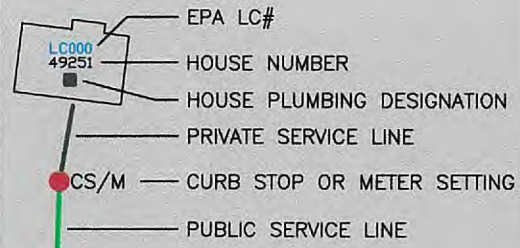
SCALE: 1"=30' (22"x34")
1"=60' (11"x17")

DATE:
JANUARY 2011

PROJECT NO.
10045

DRAWING NO.
5

LEGEND



COLORS

- LEAD
- NO LEAD
- NO INFORMATION



NO.	DATE	REVISION

DRAWN BY:
DAVID STEWART
 CHECKED BY:
JEFFREY A. VAUGHN

VAUGHN, COAST & VAUGHN, INC.
 Engineers
 154 South Marietta Street
 St. Clairsville, Ohio 43950
 740-695-7256 Fax: 740-695-2203

VILLAGE OF FLUSHING
 Water Main Replacements
 Belmont County, Ohio

ALONG EAST HIGH STREET
 LINES 5 AND 6

SCALE: 1"=30' (22"x34") 1"=60' (11"x17")	PROJECT NO. 10045
DATE: JANUARY 2011	DRAWING NO. 6



LEGEND

- EPA LC#
- HOUSE NUMBER
- HOUSE PLUMBING DESIGNATION
- PRIVATE SERVICE LINE
- CS/M — CURB STOP OR METER SETTING
- PUBLIC SERVICE LINE

COLORS

- LEAD
- NO LEAD
- NO INFORMATION

WATER MAIN MATERIALS:
LINE 6: 6" PC235 PVC DR18 AWWA C900

RECORD DRAWING 5/12

NO.	DATE	REVISION

DRAWN BY:
DAVID STEWART
CHECKED BY:
JEFFREY A. VAUGHN

VAUGHN, COAST & VAUGHN, INC.
Engineers
154 South Marietta Street
St. Clairsville, Ohio 43950
740-695-7256 Fax: 740-695-2203

VILLAGE OF FLUSHING
Water Main Replacements
Belmont County, Ohio

ALONG EAST HIGH STREET
LINE 6

SCALE: 1"=30' (22"x34")
1"=60' (11"x17")
DATE: JANUARY 2011
PROJECT NO. 10045
DRAWING NO. 7



LEGEND

- EPA LC#
- HOUSE NUMBER
- HOUSE PLUMBING DESIGNATION
- PRIVATE SERVICE LINE
- CS/M — CURB STOP OR METER SETTING
- PUBLIC SERVICE LINE

COLORS

- LEAD
- NO LEAD
- NO INFORMATION

WATER MAIN MATERIALS:

- LINE 6: 6" PC235 PVC DR18 AWWA C900
- LINE 7: 6" PC235 PVC DR18 RESTRAINED JOINT AWWA C900 TO BE INSTALLED WITH DIRECTIONAL BORING METHODS
- LINE 8: 6" PC235 PVC DR18 AWWA C900

RECORD DRAWING 5/12

NO.	DATE	REVISION

DRAWN BY:
DAVID STEWART
CHECKED BY:
JEFFREY A. VAUGHN

VAUGHN, COAST & VAUGHN, INC.
Engineers
154 South Marietta Street
St. Clairsville, Ohio 43950
740-695-7256 Fax: 740-695-2203

VILLAGE OF FLUSHING
Water Main Replacements
Belmont County, Ohio

ALONG EAST HIGH STREET
LINES 6, 7 AND 8

SCALE: 1"=30' (22"x34") 1"=60' (11"x17")	PROJECT NO. 10045
DATE: JANUARY 2011	DRAWING NO. 8



LEGEND

- EPA LC#
- HOUSE NUMBER
- HOUSE PLUMBING DESIGNATION
- PRIVATE SERVICE LINE
- CS/M — CURB STOP OR METER SETTING
- PUBLIC SERVICE LINE

COLORS

- LEAD
- NO LEAD
- NO INFORMATION

WATER MAIN MATERIALS:

- LINE 8: 6" PC235 PVC DR18 AWWA C900
- LINE 9: 4" PC235 PVC DR18 AWWA C900

RECORD DRAWING 5/12

NO.	DATE	REVISION

DRAWN BY:
DAVID STEWART
CHECKED BY:
JEFFREY A. VAUGHN

VAUGHN, COAST & VAUGHN, INC.
Engineers
154 South Marietta Street
St. Clairsville, Ohio 43950
740-695-7256 Fax: 740-695-2203

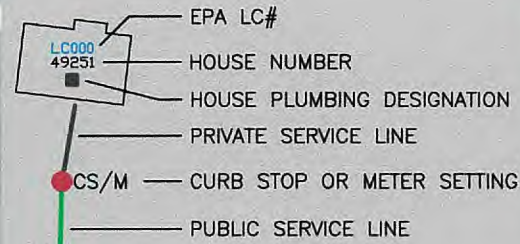
VILLAGE OF FLUSHING
Water Main Replacements
Belmont County, Ohio

ALONG EAST HIGH STREET AND JOHNSON LANE
LINES 8 AND 9

SCALE: 1"=30' (22"x34") 1"=60' (11"x17")	PROJECT NO. 10045
DATE: JANUARY 2011	DRAWING NO. 9

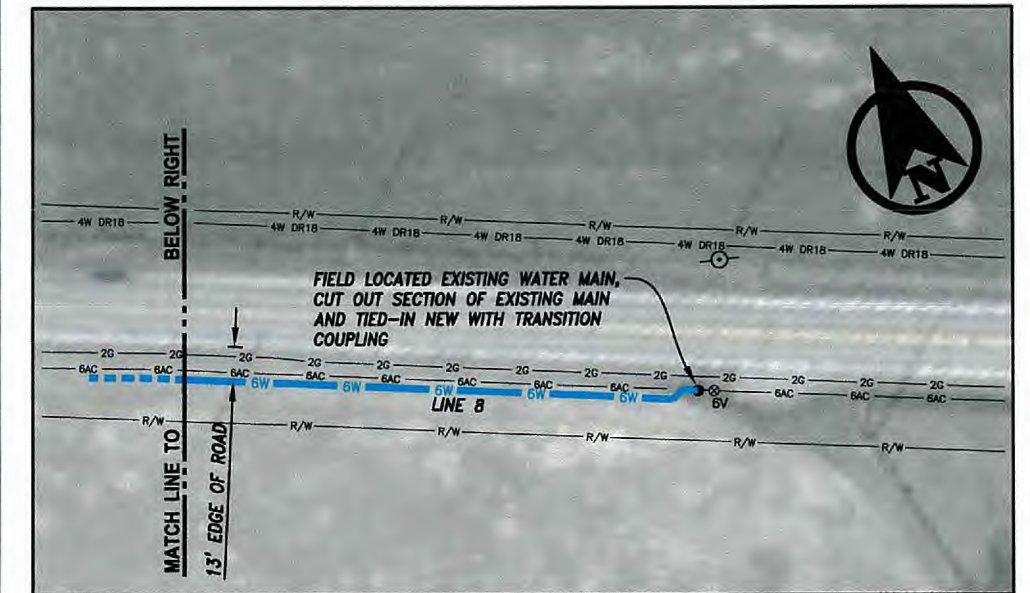


LEGEND



COLORS

- LEAD
- NO LEAD
- NO INFORMATION



WATER MAIN MATERIALS:

- LINE 8: 6" PC235 PVC DR18 AWWA C900
- LINE 10: 4" PC235 PVC DR18 RESTRAINED JOINT AWWA C900 TO BE INSTALLED WITH DIRECTIONAL BORING METHODS

RECORD DRAWING 5/12

NO.	DATE	REVISION

DRAWN BY:
DAVID STEWART
 CHECKED BY:
JEFFREY A. VAUGHN

VAUGHN, COAST & VAUGHN, INC.
 Engineers
 154 South Marietta Street
 St. Clairsville, Ohio 43950
 740-695-7256 Fax: 740-695-2203

VILLAGE OF FLUSHING
 Water Main Replacements
 Belmont County, Ohio

ALONG EAST HIGH STREET
 LINES 8 AND 10

SCALE: 1"=30' (22"x34") 1"=60' (11"x17")	PROJECT NO. 10045
DATE: JANUARY 2011	DRAWING NO. 11



NO.	DATE	REVISION

DRAWN BY:
DAVID STEWART

CHECKED BY:
JEFFREY A. VAUGHN

VAUGHN, COAST & VAUGHN, INC.
Engineers
154 South Marietta Street
St. Clairsville, Ohio 43950
740-695-7256 Fax: 740-695-2203

VILLAGE OF FLUSHING
Water Main Replacements
Belmont County, Ohio

ALONG BANK STREET AND
STATION HILL STREET
LINES 11 AND 12

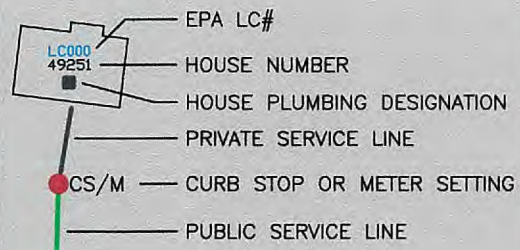
SCALE: 1"=30' (22"x34")
1"=60' (11"x17")

DATE: JANUARY 2011

PROJECT NO.
10045

DRAWING NO.
12

LEGEND



COLORS

- = LEAD
- = NO LEAD
- = NO INFORMATION



* CUSTOMERS 13-1, 13-2, 13-3 AND 13-4 TO RECEIVE NEW OUTSIDE TANDEM METER SETTING PLUS SERVICE RECONNECT

* CUSTOMERS 13-5, 13-6, 13-7, 13-10 AND 13-14 TO RECEIVE PRESSURE REDUCING VALVE IN HOUSE PLUMBING PLUS SERVICE RECONNECT

WATER MAIN MATERIALS:

LINE 12: 6" PC235 PVC DR18 RESTRAINED JOINT AWWA C900 TO BE INSTALLED WITH DIRECTIONAL BORING METHODS

LINE 13: 2" CL200 PVC SDR21 ASTM D2241-NSF APPROVED

RECORD DRAWING 5/12

NO.	DATE	REVISION

DRAWN BY:
DAVID STEWART

CHECKED BY:
JEFFREY A. VAUGHN

VAUGHN, COAST & VAUGHN, INC.
 Engineers
 154 South Marietta Street
 St. Clairsville, Ohio 43950
 740-695-7256 Fax: 740-695-2203

VILLAGE OF FLUSHING
 Water Main Replacements
 Belmont County, Ohio

ALONG STATION HILL AND BANK STREETS
 LINES 12 AND 13

SCALE: 1"=30' (22"x34") 1"=60' (11"x17")	PROJECT NO. 10045
DATE: JANUARY 2011	DRAWING NO. 13



LEGEND

LC000

49251

HOUSE NUMBER

HOUSE PLUMBING DESIGNATION

PRIVATE SERVICE LINE

CS/M — CURB STOP OR METER SETTING

PUBLIC SERVICE LINE

COLORS

= LEAD

= NO LEAD

= NO INFORMATION

NO.	DATE	REVISION

DRAWN BY:
DAVID STEWART

CHECKED BY:
JEFFREY A. VAUGHN

VAUGHN, COAST & VAUGHN, INC.
Engineers
154 South Marietta Street
St. Clairsville, Ohio 43950
740-695-7256 Fax: 740-695-2203

VILLAGE OF FLUSHING
Water Main Replacements
Belmont County, Ohio

ALONG MORRISTOWN AND SPRING STREETS
LINES 14, 15 AND 16

SCALE: 1"=30' (22"x34") 1"=60' (11"x17")	PROJECT NO. 10045
DATE: JANUARY 2011	DRAWING NO. 15



WATER MAIN MATERIALS:
 LINE 15: 6" PC235 PVC DR18 AMWA C900

RECORD DRAWING 5/12

NO.	DATE	REVISION

DRAWN BY:
DAVID STEWART

CHECKED BY:
JEFFREY A. VAUGHN

VAUGHN, COAST & VAUGHN, INC.
 Engineers
 154 South Marietta Street
 St. Clairsville, Ohio 43950
 740-695-7258 Fax: 740-695-2203

VILLAGE OF FLUSHING
 Water Main Replacements
 Belmont County, Ohio

**ALONG MORRISTOWN AND MILL STREETS
 LINE 15**

SCALE: 1"=30' (22"x34")
 1"=60' (11"x17")

DATE: JANUARY 2011

PROJECT NO.
10045

DRAWING NO.
16



LEGEND

LC000

49251

EPA LC#

■

HOUSE NUMBER

—

HOUSE PLUMBING DESIGNATION

—

PRIVATE SERVICE LINE

●

CS/M — CURB STOP OR METER SETTING

—

PUBLIC SERVICE LINE

COLORS

■

= LEAD

■

= NO LEAD

■

= NO INFORMATION

WATER MAIN MATERIALS:
LINE 15: 6" PC235 PVC DR18 AWWA C900
LINE 17: 6" PC235 PVC DR18 AWWA C900

RECORD DRAWING 5/12

NO.	DATE	REVISION

DRAWN BY:
DAVID STEWART

CHECKED BY:
JEFFREY A. VAUGHN

VAUGHN, COAST & VAUGHN, INC.
Engineers
154 South Marietta Street
St. Clairsville, Ohio 43050
740-695-7256 Fax: 740-695-2203

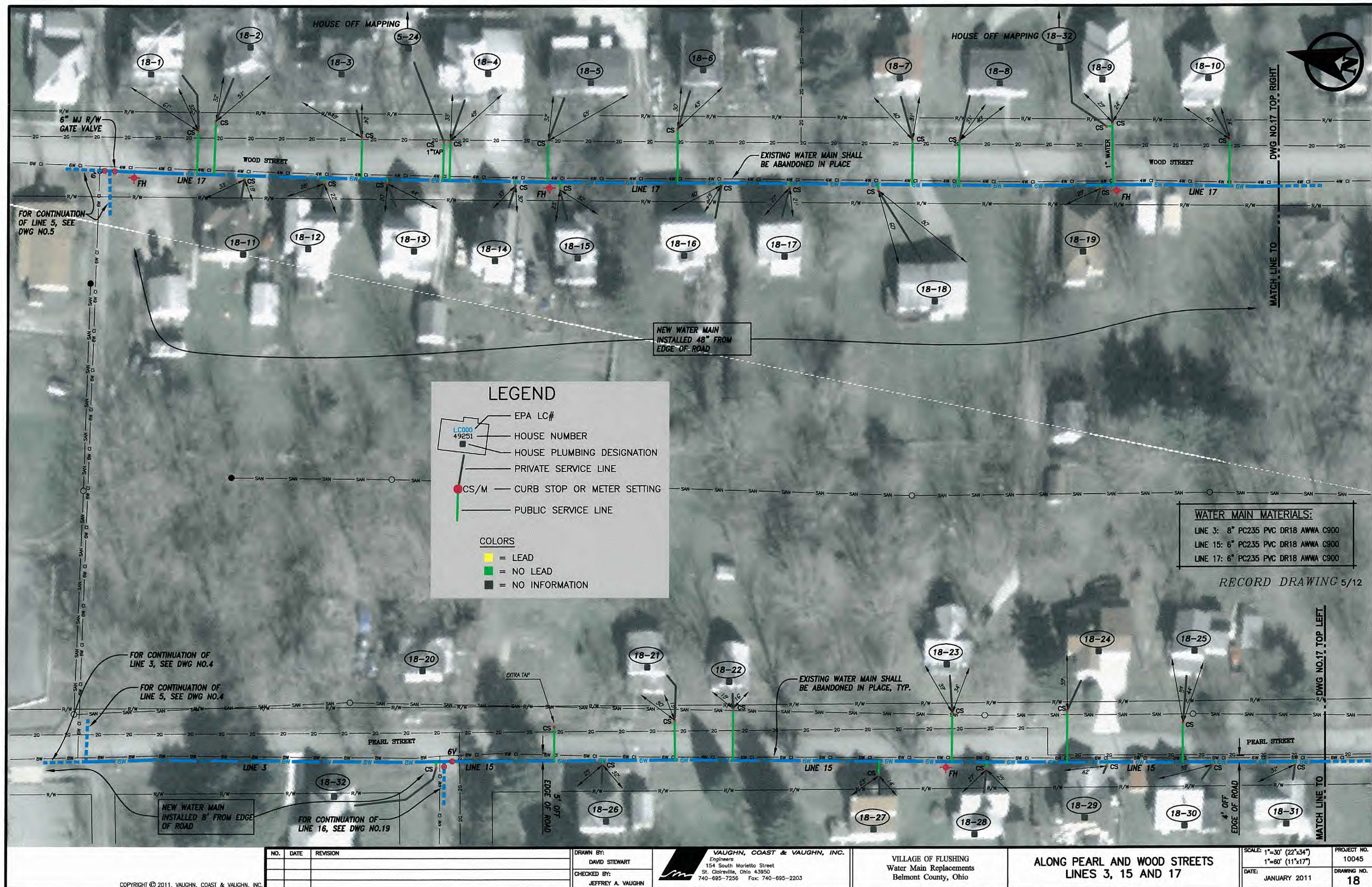
VILLAGE OF FLUSHING
Water Main Replacements
Belmont County, Ohio

ALONG MILL, PEARL AND WOOD STREETS
LINES 15 AND 17

SCALE: 1"=30' (22"x34")
1"=60' (11"x17")
DATE: JANUARY 2011

PROJECT NO.
10045

DRAWING NO.
17





LEGEND

- EPA LC#
- HOUSE NUMBER
- HOUSE PLUMBING DESIGNATION
- PRIVATE SERVICE LINE
- CS/M — CURB STOP OR METER SETTING
- PUBLIC SERVICE LINE

COLORS

- LEAD
- NO LEAD
- NO INFORMATION

WATER MAIN MATERIALS:
LINE 16: 6" PC235 PVC DR18 AWWA C900

RECORD DRAWING 5/12

NO.	DATE	REVISION

DRAWN BY:
DAVID STEWART

CHECKED BY:
JEFFREY A. VAUGHN

VAUGHN, COAST & VAUGHN, INC.
Engineers
154 South Marietta Street
St. Clairsville, Ohio 43950
740-695-7256 Fax: 740-695-2203

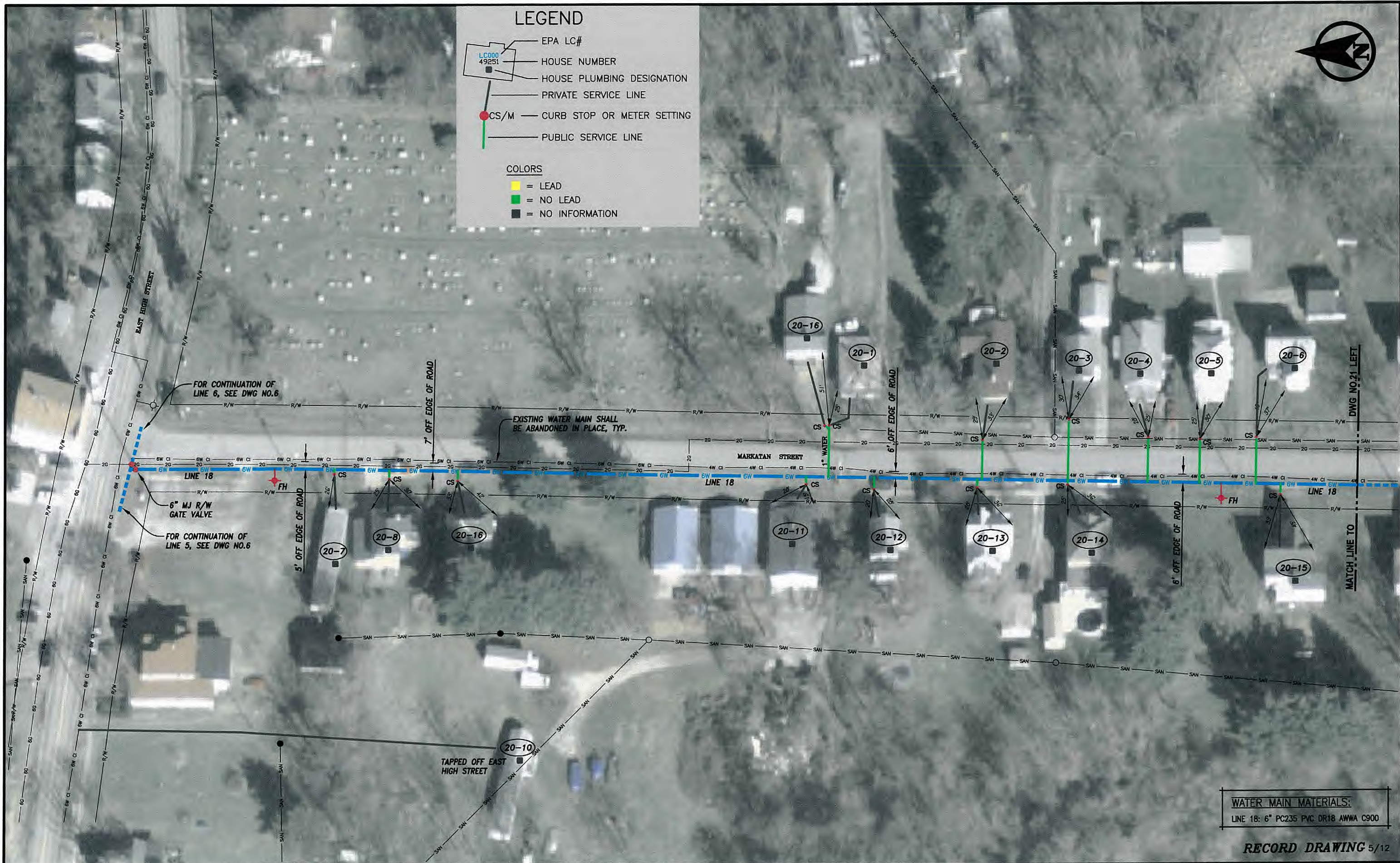
VILLAGE OF FLUSHING
Water Main Replacements
Belmont County, Ohio

ALONG SPRING STREET
LINE 16

SCALE: 1"=30' (22"x34")
1"=60' (11"x17")
DATE: JANUARY 2011

PROJECT NO.
10045

DRAWING NO.
19



LEGEND

EPA LC#
HOUSE NUMBER
HOUSE PLUMBING DESIGNATION
PRIVATE SERVICE LINE
CS/M — CURB STOP OR METER SETTING
PUBLIC SERVICE LINE

COLORS
= LEAD
= NO LEAD
= NO INFORMATION

WATER MAIN MATERIALS:
LINE 18: 6" PC235 PVC DR18 AWWA C900

RECORD DRAWING 5/12

NO.	DATE	REVISION

DRAWN BY:
DAVID STEWART
CHECKED BY:
JEFFREY A. VAUGHN

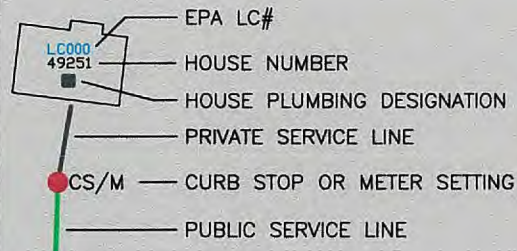
VAUGHN, COAST & VAUGHN, INC.
Engineers
154 South Marietta Street
St. Clairsville, Ohio 43950
740-695-7256 Fax: 740-695-2203

VILLAGE OF FLUSHING
Water Main Replacements
Belmont County, Ohio

**ALONG MARKATAN STREET
LINE 18**

SCALE: 1"=30' (22'x34") 1"=60' (11'x17")	PROJECT NO. 10045
DATE: JANUARY 2011	DRAWING NO. 20

LEGEND



COLORS

- = LEAD
- = NO LEAD
- = NO INFORMATION



WATER MAIN MATERIALS:
 LINE 18: 6" PC235 PVC DR18 AWWA C900

RECORD DRAWING 5/12

NO.	DATE	REVISION

DRAWN BY:
DAVID STEWART

CHECKED BY:
JEFFREY A. VAUGHN

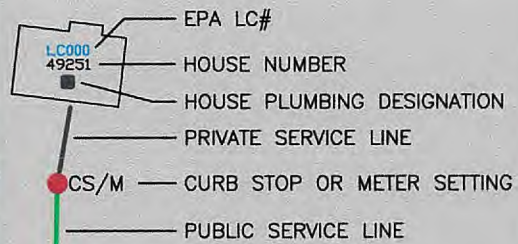
VAUGHN, COAST & VAUGHN, INC.
 Engineers
 154 South Marietta Street
 St. Clairsville, Ohio 43950
 740-695-7256 Fax: 740-695-2203

VILLAGE OF FLUSHING
 Water Main Replacements
 Belmont County, Ohio

**ALONG MARKATAN STREET
 LINE 18**

SCALE: 1"=30' (22"x34") 1"=60' (11"x17")	PROJECT NO. 10045
DATE: JANUARY 2011	DRAWING NO. 21

LEGEND



COLORS
 = LEAD
 = NO LEAD
 = NO INFORMATION



WATER MAIN MATERIALS:
 LINE 19: 6" PC235 PVC DR18 AWWA C900

RECORD DRAWING 5/12

NO.	DATE	REVISION

DRAWN BY: DAVID STEWART
CHECKED BY: JEFFREY A. VAUGHN

VAUGHN, COAST & VAUGHN, INC.
 Engineers
 154 South Marietta Street
 St. Clairsville, Ohio 43950
 740-695-7256 Fax: 740-695-2203

VILLAGE OF FLUSHING
 Water Main Replacements
 Belmont County, Ohio

ALONG NORTHEAST ROAD
 LINE 19

SCALE: 1"=30' (22"x34") 1"=60' (11"x17")	PROJECT NO. 10045
DATE: JANUARY 2011	DRAWING NO. 22



LEGEND

LC000

49251

—

—

EPA LC#

HOUSE NUMBER

HOUSE PLUMBING DESIGNATION

PRIVATE SERVICE LINE

●

—

CS/M — CURB STOP OR METER SETTING

—

—

PUBLIC SERVICE LINE

COLORS

■

= LEAD

■

= NO LEAD

■

= NO INFORMATION

WATER MAIN MATERIALS:
LINE 20: 6" PC235 PVC DR18 AWWA C900

RECORD DRAWING 5/12

NO.	DATE	REVISION

DRAWN BY:
DAVID STEWART

CHECKED BY:
JEFFREY A. VAUGHN

VAUGHN, COAST & VAUGHN, INC.
Engineers
154 South Marietta Street
St. Clairsville, Ohio 43950
740-695-7256 Fax: 740-695-2203

VILLAGE OF FLUSHING
Water Main Replacements
Belmont County, Ohio

ALONG CIRCLE DRIVE
LINE 20

SCALE: 1"=30' (22"x34") 1"=60' (11"x17")	PROJECT NO. 10045
DATE: JANUARY 2011	DRAWING NO. 23