

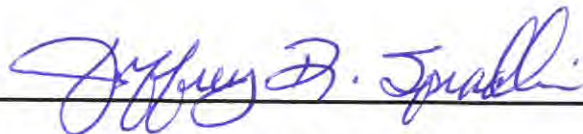
PWSID # 7302503

2017 MAR -9 PM 1:37

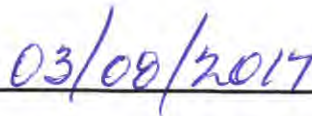
Scioto Water, Inc.

Lead Service Line Mapping and Sampling Report

March 2017



Jeffery Spradlin, General Manager



Date

PWSID # 7302503

**Scioto Water, Inc.
Lead Service Line Mapping**

General

The Scioto Water, Inc. (SWI) is a rural not-for-profit water company organized in the late 1960's and provides water service in portions of Scioto, Pike, Jackson, and Lawrence Counties. Scioto Water, Inc. has two treatment facilities and also purchases water from the City of Portsmouth. The distribution system is broken into three distinct service areas which are the Rose Hill, East End, and West End Service Areas. Figure 1.0 -1 provides a general graphical location map of the three services Areas. These areas have been further broken down into zones for purposes of finding lost water.

SWI water distribution mains are not constructed of lead piping or with lead joints.

PWSID # 7302503 is located in the East End service area.

Water Company Side of Meter

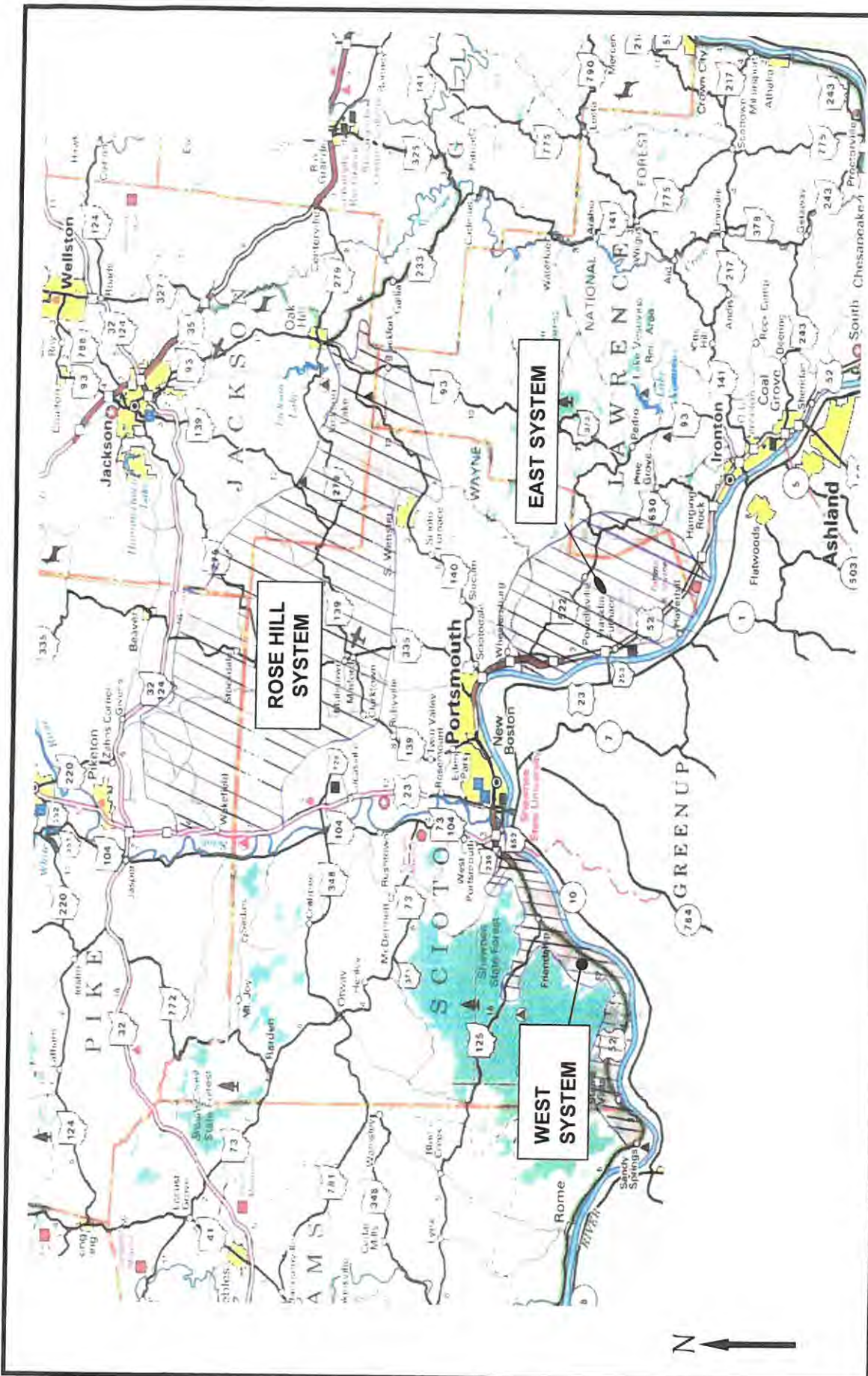
The lead service line mapping is broken down into two segments. One segment is the SWI company side of the water meter. SWI uses water meters for each customer for flow measurement for billing purposes. The water meters are located in meter pits generally near the highway right-of-way. In 2016, SWI replaced the meters to incorporate a drive-by radio read meter system. The meters that are currently installed for residential users consist of a plastic material.

On the SWI company side of the water meter, SWI installed the service line connecting the water main to the water meter. SWI left approximately 5 feet of service line beyond the water meter for the customer to connect to. None of the service lines installed by SWI consist of lead material.

PWSID # 7302503 does not contain any lead service lines from the water main to the water meter.

The following map(s) depicts the service area for PWSID # 7302503. The color coded map indicates that there are no lead service lines from the water main to the water meter.

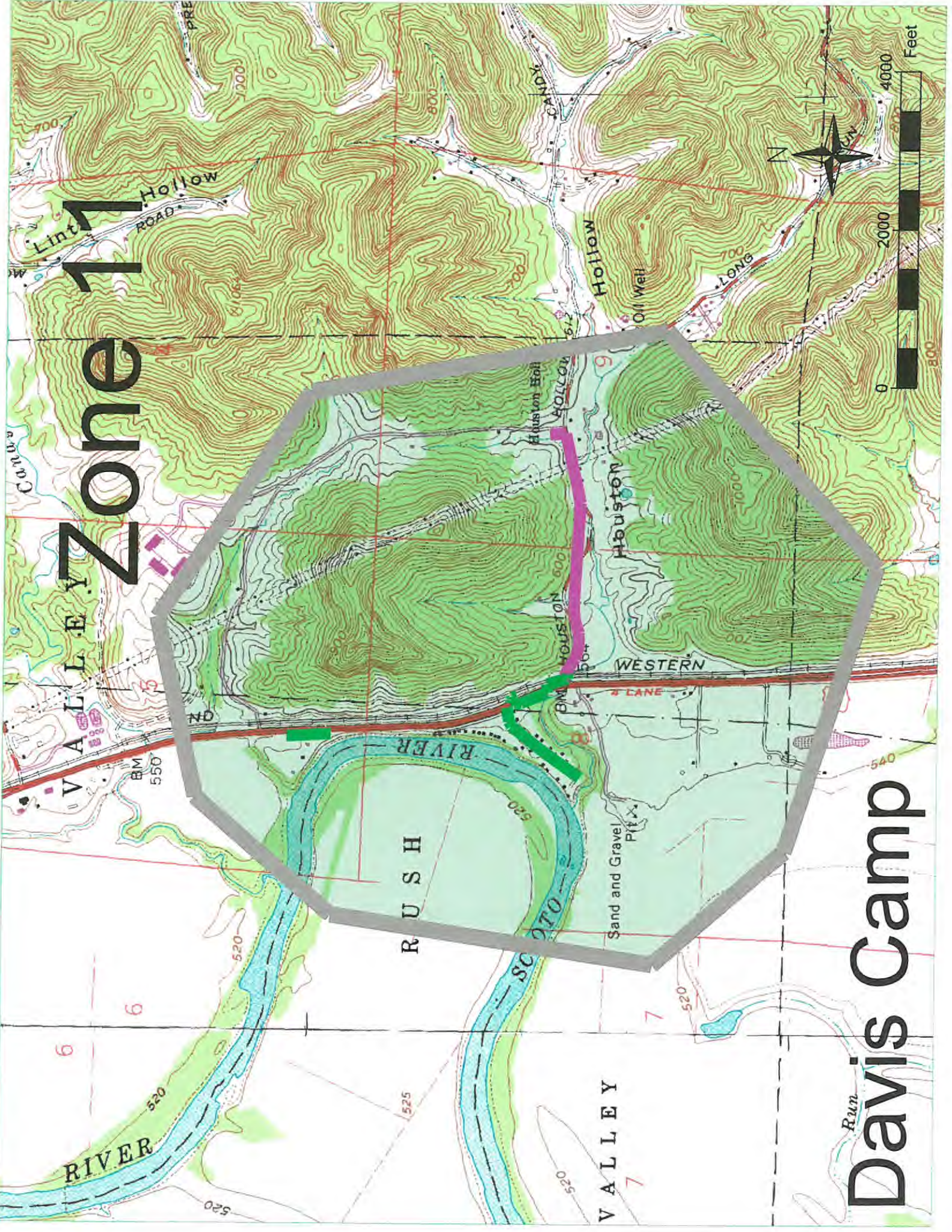
Lead =  No Lead =  No Information = 



SCIOTO WATER, INC

WATER SYSTEMS GENERAL LOCATION MAP

FIGURE 1.0 - 1



Zone 11

Davis Camp

RIVER

RUSH

VALLEY

RIVER

SCOTT

WESTERN

LANE

Sand and Gravel Pit

Lint Hollow

Hollow

Houston Hill

Houston

ROAD

BM 550

BM 555

BM 560

BM 565

BM 570

BM 575

BM 580

BM 585

BM 590

BM 595

520

520

520

520

520

520

520

520

520

520

520

520

520

525

525

525

525

525

525

525

525

525

525

525

525

525

525

525

525

525

525

525

525

525

525

525

525

525

525

525

525

525

525

525

525

525

525

525

525

525

525

525

525

525

525

525

525

525

525

525

525

525

525

525

525

525

525

525

525

525

525

525

525

525

525

525

525

525

525

525

525

525

525

525

525

525

525

525

525

525

525

525

525

525

525

525

525

525

525

525

525

525

525

525

525

525

525

525

525

525

525

525

525

525

525

525

525

525

525

525

525

525

525

525

525

525

525

525

525

525

525

525

525

525

525

525

525

525

525

525

525

525

525

525

525

525

525

525

525

525

525

525

525

525

525

525

525

525

525

525

525

525

525

525

525

525

525

525

525

525

525

525

525

525

525

525

525

525

525

525

525

525

525

525

525

525

525

525

525

525

525

525

525

525

525

525

525

525

525

525

525

525

525

525

525

525

525

525

525

525

525

525

525

525

525

525

525

525

525

525

525

525

525

525

525

525

525

525

525

525

525

525

525

525

525

525

525

525

525

525

525

525

525

525

525

525

525

525

525

525

525

525

525

525

525

525

525

525

525

525

525

525

525

525

525

525

525

525

525

525

525

525

525

525

525

525

525

525

525

525

525

525

525

525

525

525

525

525

525

525

525

525

525

525

525

525

525

525

525

525

525

525

525

525

525

525

525

525

525

525

525

525

525

525

Customer Side of the Water Meter

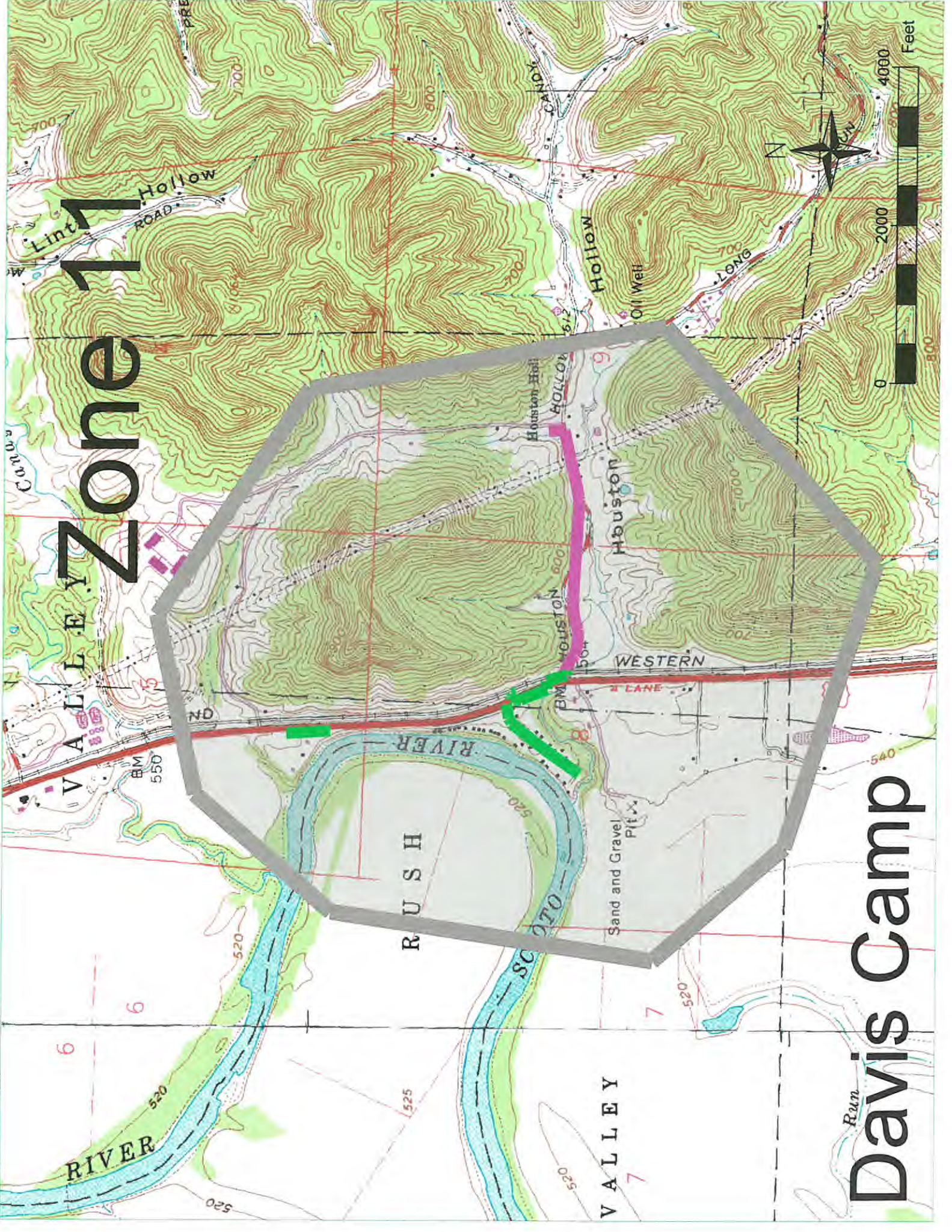
After SWI provided the water meter and the service line from the water main to the meter, the customer connected the residence, building, etc. to the water meter. Some of these may have been to existing homes at that time where the property owner switched from a well or cistern to the SWI supplied water. In other cases, new homes or buildings may have been constructed.

PWSID # 7302503 consists of residences, buildings, etc. of various ages. As this is a rural area, newer homes may have been constructed between older existing homes. Nearly all homes in this service area were constructed prior to 2014.

The users in this area should not have lead service lines as connections to the water meter would have been made from approximately 1970 or later. However, they may have fixtures with solder or brass that may contain lead.

The following map(s) indicate the customer side of the meter for the service area for PWSID # 7302503. The map(s) are coded to indicate that it is unknown as to whether any lead products exist for each customer.

Lead =  No Lead =  No Information = 



Zone 11

Davis Camp

RIVER

RUSH

VALLEY

SCOTO

WESTERN

Houston

Hollown

Hollow

CANDY

Hollow

ROAD

