

RE: ERIE CO PERKINS DISTRICT  
Report  
Drinking Water Program  
Erie County  
PWS ID: OH2200603

Perkins 042200623



# ERIE COUNTY PUBLIC WATER SYSTEM LEAD ASSESSMENT MAP - SOUTHWESTERN DISTRICT

"Buildings in Ohio built prior to 1988 or that use plumbing material or solder manufactured before 1988 may have materials with greater than 8% lead and are at a higher risk of contributing lead to the drinking water than materials manufactured after 1988. In addition, buildings built and plumbing materials manufactured after 2014 were required to have less than 0.25% lead by weight and have the lowest risk for contributing lead to the drinking water. It should be noted however that, although prohibited, some use of leaded solder or leaded components may have occurred after the prohibitions became effective."



Developed per AB 312 guidance re: "Lead Service Line and Fixture Mapping Project" issue date 1/2017.  
 Made by the County Department of Environmental Services 3/2017.  
 Date: Erie County D.O.E.S., Erie County Auditor, USGS  
 Coordinate System: Projected\_NAD\_1983\_StatePlane\_Ohio\_North\_FIPS\_3401\_Feet

~~While reviewing this map, red lines represent sections of the Erie County Public Water System that have the potential for containing lead. Given that the lead service line is a pipe that has the potential for containing lead, the determination between the two entities was deferred from performing any installation dates before 1988 and the second category remained on this map to 1988, a lead service line was implemented.~~



Disclaimer: The County provides this data in the public "as is" and is developed using sources believed to be reliable. The County offers no guarantee of accuracy of the content without. Any errors are the responsibility of the user and not the County's liability. The information is not intended to be used as a substitute for professional advice.



# ERIE COUNTY PUBLIC WATER SYSTEM LEAD ASSESSMENT MAP - NORTHWESTERN DISTRICT

"Buildings in Ohio built prior to 1988 or that use plumbing material or solder manufactured before 1988 may have materials with greater than 8% lead and are at a higher risk of contributing lead to the drinking water than materials manufactured after 1988. In addition, buildings built and plumbing materials manufactured after 2014 were required to have less than 0.25% lead by weight and have the lowest risk for contributing lead to the drinking water. It should be noted however that, although prohibited, some use of leaded solder or leaded components may have occurred after the prohibitions became effective."



Developed per MD 517; reviewed doc: "Lead Service Line and Future Mapping Project" issue date 10/17.  
 Made by: Erie County Department of Environmental Services 3/17.  
 Date: Erie County GIS & GIS, Erie County Auditor, GISGIS.  
 Coordinate System: Projected\_NAD\_1883\_StatePlane\_Ohio\_North\_FIPS\_3401\_Feet

While reviewing the marked lines in various sections of the Erie County Public Water System that have been subjected to certain lead, certain lines represent facilities that are high risk and have a low potential to contribute lead. The distinction between the two criteria will be based on the age of the installation prior to 1988 and the specific category installed on or after 1988. A lead service line was implemented.



Disclaimer: The County prepared this data for the public. No liability is assumed for any errors or omissions. The County shall be held responsible for any errors or omissions. Any business major not made using this data will be the responsibility of the user. This information shall be used as a reference only.



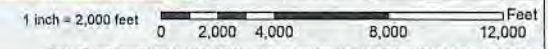
# ERIE COUNTY PUBLIC WATER SYSTEM LEAD ASSESSMENT MAP - NORTHEASTERN DISTRICT

"Buildings in Ohio built prior to 1988 or that use plumbing material or solder manufactured before 1998 may have materials with greater than 8% lead and are at a higher risk of contributing lead to the drinking water than materials manufactured after 1998. In addition, buildings built and plumbing materials manufactured after 2014 were required to have less than 6.25% lead by weight and have the lowest risk for contributing lead to the drinking water. It should be noted however that, although prohibited, some use of leaded solder or leaded components may have occurred after the prohibitions became effective."



Developed per MSU reference doc. "Lead Service Line and Future Mapping Project" Issue date 10/17.  
 Made by: Erie County Department of Environmental Services 2/1/17  
 Date: Erie County D.D.E.S., Erie County Auditor: 12/2/15  
 Coordinate System: Projected\_NAD\_1983\_StatePlane\_Ohio\_North\_FIPS\_3401\_Feet

While reviewing the marked blue pipe sections in the Erie County Public Water System that have been subjected to cathodic lead, Ohio Dept. of Environmental Protection and how low potential to contribute lead. The distinction between the two critical use cases is the packaging material installation dates before 1988 and the second category installed on after 1988 in 1988, a lead service line was implemented.



Disclaimer: The County provides this data to the public for informational purposes only. The County of Erie and its employees are not liable for any errors or omissions in this data. Any decisions made or actions taken based on this data will be the user's responsibility. This information shall not be used as a replacement for professional services.



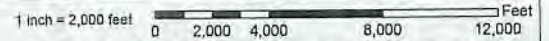
# ERIE COUNTY PUBLIC WATER SYSTEM LEAD ASSESSMENT MAP - SOUTHEASTERN DISTRICT

"Buildings in Ohio built prior to 1938 or that use plumbing material or solder manufactured before 1988 may have materials with greater than 8% lead and are at a higher risk of contributing lead to the drinking water than materials manufactured after 1938. In addition, buildings built and plumbing materials manufactured after 2014 were required to have less than 0.25% lead by weight and have the lowest risk for contributing lead to the drinking water. It should be noted however that, although prohibited, some use of leaded solder or leaded components may have occurred after the prohibitions became effective."



Developed per AIG 312 reference to: "Lead Service Line and Future Mapping Project" issue date 10/27.  
 Made By: Erie County Department of Environmental Services 3/7/17.  
 Date: Erie County O.C.E.S., Erie County Auditor, USGS.  
 Coordinate System: Projected\_NAD\_1983\_StatePlane\_Ohio\_8\_FIPS\_3401\_Proj

While reviewing this map red lines represent sections of the Erie County Public Water System that have high potential to contain lead. Given that red sections of the ES&WS map have high potential for containing lead, the information on this map is for informational purposes only. It is not intended to be used for lead service line installation. Lead service lines installed before 1938 and the second category installed on after 1988 to 1994, a lead service line was implemented.

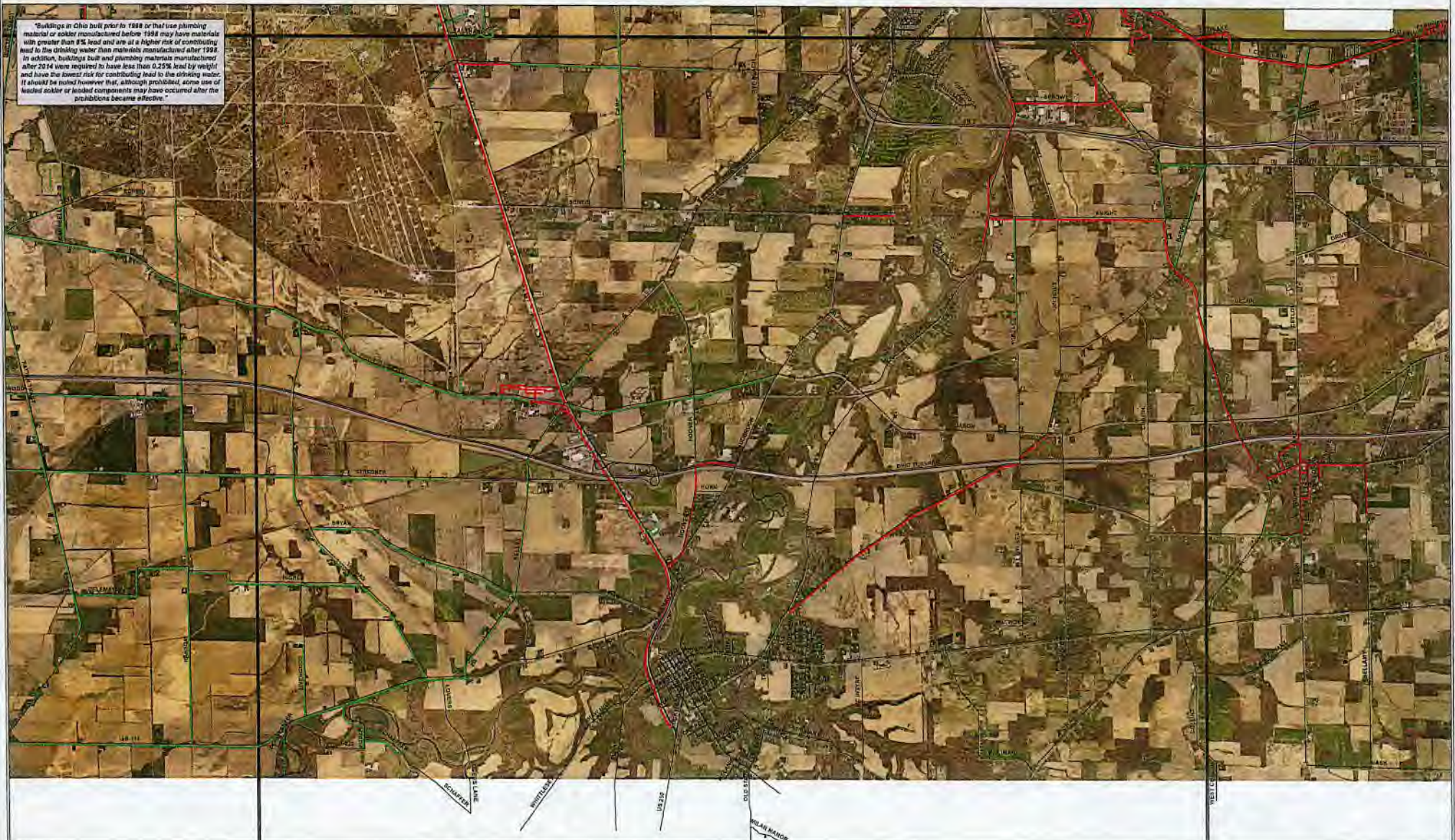


Disclaimer: The County provided this data to the public "as is" which is developed using sources believed to be reliable. The County offers no guarantee, warranty or the implied warranty. Any provision could not make existing this data as 4737 before the County's liability. For information that be utilized as reference material only.



# ERIE COUNTY PUBLIC WATER SYSTEM LEAD ASSESSMENT MAP - SOUTHCENTRAL DISTRICT

"Buildings in Ohio built prior to 1988 or that use plumbing material or solder manufactured before 1988 may have materials with greater than 5% lead and are at a higher risk of contributing lead to the drinking water than materials manufactured after 1988. In addition, buildings built and plumbing materials manufactured after 2014 were required to have less than 0.25% lead by weight and have the lowest risk for contributing lead to the drinking water. It should be noted however that, although prohibited, some use of leaded solder or leaded components may have occurred after the prohibitions became effective."



Developed per HD 512; reference doc: "Lead Service Line and Future Mapping Project" Date: 04/16/17.  
 Made by: Erie County Department of Environmental Services 3/7/17.  
 Date: Erie County GIS Data, Erie County ArcGIS, 1/15/15.  
 Coordinate System: Projected\_NAD\_1983\_StatePlane\_Ohio\_Avenue\_PPS\_5401\_Feet

While reviewing this map, you may see red shaded sections of the Erie County Public Water System that have been previously identified as high risk. These red shaded sections are not necessarily high risk but have a higher potential to contribute lead. The distinction between the high risk and red shaded areas is based on the installation date before 1988 and the second category is based on the date after 1988 to 1998, a lead service line was implemented.

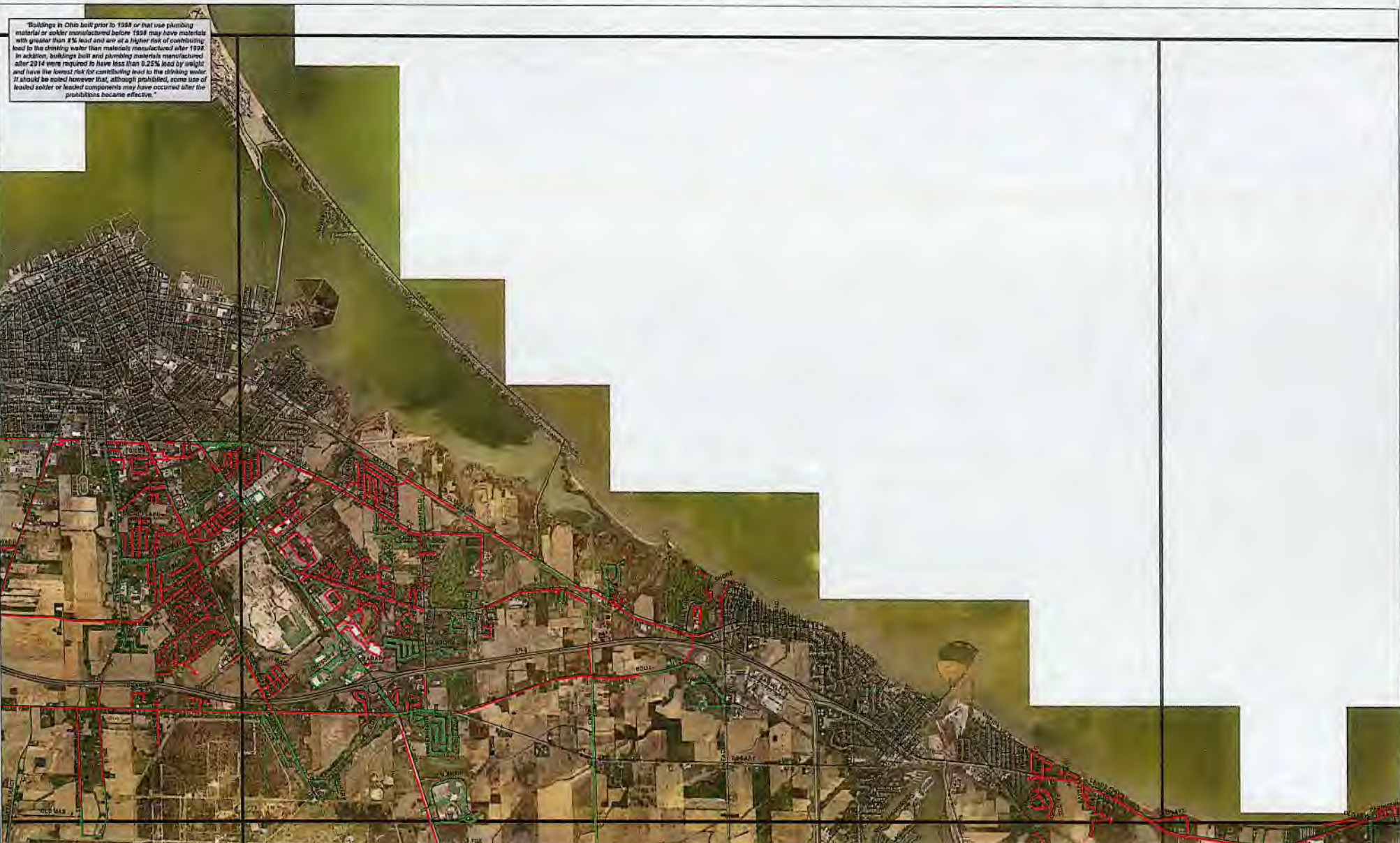


Disclaimer: The County assumes no liability for the data, its accuracy or completeness. The County will not be responsible for any errors or omissions. Any derivative material made using this data will be the user's liability. This information shall be viewed as advisory and not a warranty.



# ERIE COUNTY PUBLIC WATER SYSTEM LEAD ASSESSMENT MAP - NORTHCENTRAL DISTRICT

Buildings in Ohio built prior to 1998 or that use plumbing material or solder manufactured before 1998 may have materials with greater than 8% lead and are at a higher risk of contributing lead to the drinking water than materials manufactured after 1998. In addition, buildings built and plumbing materials manufactured after 2014 were required to have less than 0.25% lead by weight and have the lowest risk for contributing lead to the drinking water. It should be noted however that, although prohibited, some use of leaded solder or leaded components may have occurred after the prohibitions became effective.



Downloaded per AID 512 reference doc: "Lead Service Line and Fixture Mapping Project" Issue date: 1/20/17  
 Made By: Erie County Department of Environmental Services 3/2/17  
 Data: Erie County D.E.S., Erie County Auditor 1/15/2012  
 Coordinate System: Projected\_MAD\_1843\_StatePlane\_Ohio\_State\_PPS\_3401\_Feet

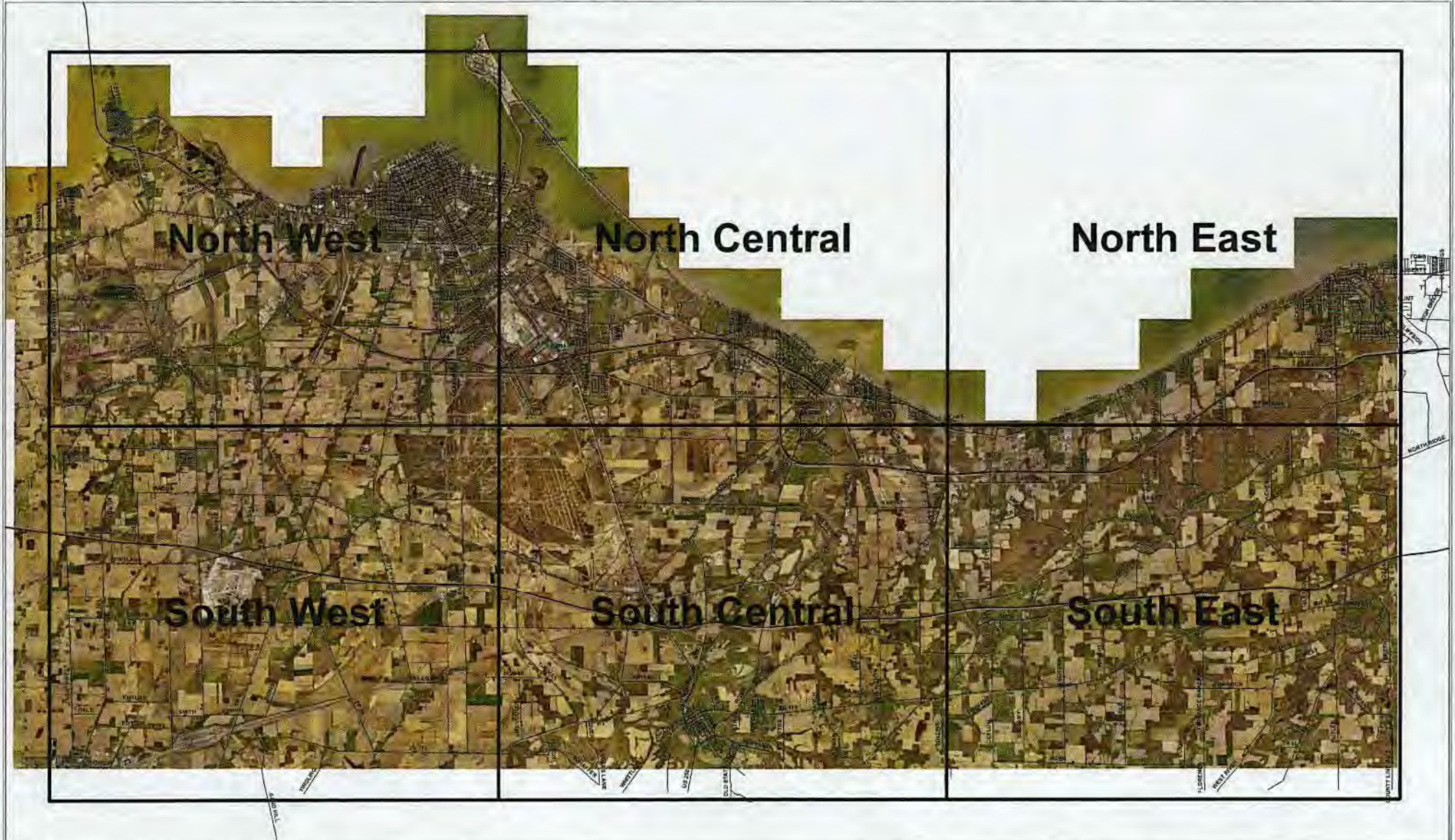
While reviewing this map, no lines represent sections of the Erie County Public Water System that have high potential to contain lead. Green lines represent sections of the Erie County Public Water System that have low potential to contain lead. The information on this map was derived from participating municipal installation data before 1998 and has been categorized (installed on or after 1998) in 1996, a lead service line was implemented.

1 inch = 2,000 feet  
 0 2,000 4,000 8,000 12,000 Feet

Disclaimer: The County assumes the user is the user. "As Is" which is intended to deny liability, however it is intended. The County offers no guarantee or warranty of the content hereof. An electronic map of the County, Ohio, as of 2017 prepared by the County Clerk. This information shall be used as a reference only.



# ERIE COUNTY PUBLIC WATER SYSTEM LEAD ASSESSMENT MAP - DISTRICT QUADRANTS



Developed per HD 372, reference file, "Lead Service Line and Future Mapping Project" issue date 1/8/17.  
 Made by Erie County Department of Environmental Services 87717.  
 Date: Erie County 12/28/22, File County Number: 03665  
 Coordinate System: Projected\_AAS\_7843\_StatePlane\_Ohio\_North\_FIPS\_5401\_Feet



Disclaimer: The County assumes no liability for the public use of this map. The County offers no guarantee or warranty of the product. Any variations made are made without the liability of the County's liability. This information should be utilized as reference material only.