

RE: ERIE CO MARGARETTA DISTRICT
Report
Drinking Water Program
Erie County
PWS ID: OH2200203

Margaretta 01/22/2023



ERIE COUNTY PUBLIC WATER SYSTEM LEAD ASSESSMENT MAP - SOUTHWESTERN DISTRICT

"Buildings in Ohio built prior to 1988 or that use plumbing material or solder manufactured before 1988 may have materials with greater than 8% lead and are at a higher risk of contributing lead to the drinking water than materials manufactured after 1988. In addition, buildings built and plumbing materials manufactured after 2014 were required to have less than 0.25% lead by weight and have the lowest risk for contributing lead to the drinking water. It should be noted however that, although prohibited, some use of leaded solder or leaded components may have occurred after the prohibitions became effective."



Developed per ER 512, reference to: "Lead Service Line and Future Mapping Project" issue date 1/1/17.
Made by Erie County Department of Environmental Services 3/17/21
Data: Erie County D.O.E.S., Erie County Assessor, USGS
Coordinate System: Projected_MAD_1463_StatePlane_Ohio_North_FIPS_3401_Feet

While reviewing this marked blue 186' x 186' section of the Erie County Public Water System that have had potential for certain lead. Given their relatively recent date of installation, they were exempt from paragraph 6 and their installation dates before 1988 and the existing category established on 1/1/19. In 1988, a lead service line was implemented.

1 inch = 2,000 feet 0 2,000 4,000 8,000 12,000 Feet

Disclaimer: The County promises that this is the best "as of" which it developed using sources believed to be reliable. The County offers no guarantee, warranty or liability of the reader. Any decisions made or not made using this data will be the user's liability. This document shall be used as an informational guide only.



ERIE COUNTY PUBLIC WATER SYSTEM LEAD ASSESSMENT MAP - NORTHWESTERN DISTRICT

"Buildings in Ohio built prior to 1998 or that use plumbing material or solder manufactured before 1998 may have materials with greater than 1% lead and are at a higher risk of contributing lead to the drinking water than materials manufactured after 1998. In addition, buildings built and plumbing materials manufactured after 2014 were required to have less than 0.25% lead by weight and have the lowest risk for contributing lead to the drinking water. It should be noted however that, although prohibited, some use of leaded solder or leaded components may have occurred after the prohibitions became effective."



Developed per HB 512 reference doc, "Lead Service Line and Fixture Mapping Project" issue date 10/07.
 Made by: Erie County Department of Environmental Services 3/17/17.
 Data: Erie County D.O.E.S., Erie County Auditor, U.S.C.S.
 Coordinate System: Projected_NAD_1983_StatePlane_Ohio_Metro_FIPS_1401_Feet

While this map may not map every pipe section of the Erie County Public Water System, it does have the potential to contain lead. Pipes that were installed before 1998 may have low potential for containing lead. The identification of pipes in the color red was derived from piping on an installation date before 1998 and the second category installed on or after 1998 in 1998, a lead service line was implemented.

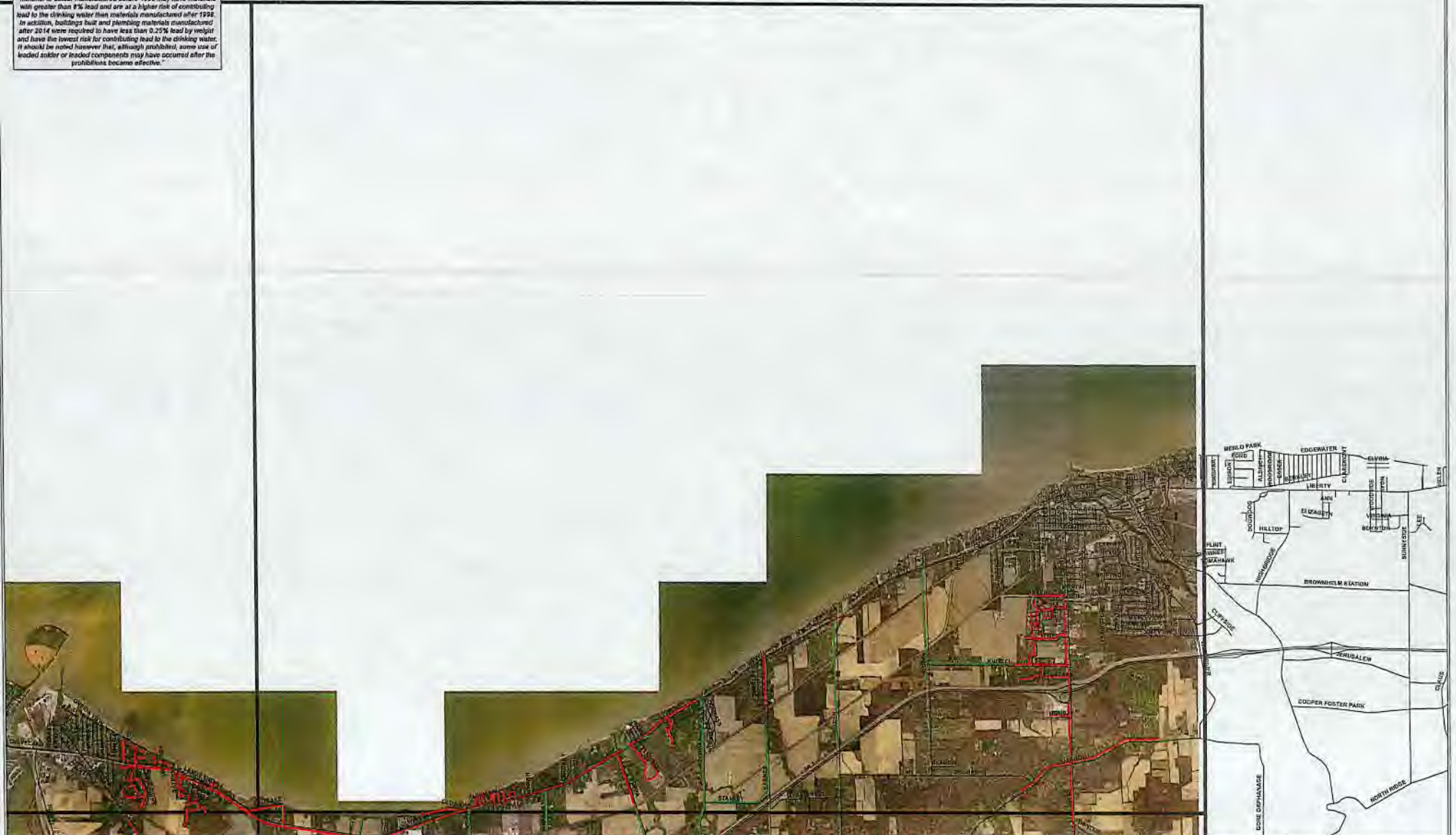
1 inch = 2,000 feet
 0 2,000 4,000 8,000 12,000 Feet

Disclaimer: This County provides this data as the public. It is not intended to be used for any purpose other than that for which it was intended. The County does not guarantee the accuracy of the material presented. Key decisions should not be made solely on the basis of this information. This information should be used as a general reference only.



ERIE COUNTY PUBLIC WATER SYSTEM LEAD ASSESSMENT MAP - NORTHEASTERN DISTRICT

"Buildings in Ohio built prior to 1998 or that use plumbing material or solder manufactured before 1998 may have materials with greater than 8% lead and are at a higher risk of contributing lead to the drinking water than materials manufactured after 1998. In addition, buildings built and plumbing materials manufactured after 2014 were required to have less than 0.25% lead by weight and have the lowest risk for contributing lead to the drinking water. It should be noted however that, although prohibited, some use of leaded solder or leaded components may have occurred after the prohibitions became effective."



Developed per JIB 512, reference to: "Lead Service Line and Filter-Missing Project" from date 1/8/17.
 Made by: Erie County Department of Environmental Services 8/7/17
 Date: Erie County 01/05/20, Erie County Auditor, JAGG
 Coordinate System: ProjCRD_NAD_783_StatePlane_Ohio_North_FIPS_2401_Feet

While reviewing this map, red lines represent sections of the Erie County Public Water System that have the potential to contain lead. Other lines represent sections of the system that have low potential to contain lead. The information displayed on this map was derived from a sampling program conducted before 1998 and the sampling data was installed on after 1998. A lead service line was implemented.

1 inch = 2,000 feet
 0 2,000 4,000 8,000 12,000 Feet

Disclaimer: The County provides this data to the public "as is" and it is intended being shared to be used. The County offers no guarantee or warranty of the accuracy or any other information resulting from this data and will not be liable for any use of this information. This information should be used as a reference only.



ERIE COUNTY PUBLIC WATER SYSTEM LEAD ASSESSMENT MAP - SOUTHEASTERN DISTRICT

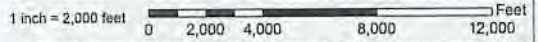
"Buildings in Ohio built prior to 1988 or that use plumbing material or solder manufactured before 1988 may have materials with greater than 4% lead and are at a higher risk of contributing lead to the drinking water than materials manufactured after 1988. In addition, buildings built and plumbing materials manufactured after 2014 were required to have less than 0.25% lead by weight and have the lowest risk for contributing lead to the drinking water. It should be noted however that, although prohibited, some use of leaded solder or leaded components may have occurred after the prohibitions became effective."



CORSE CHEVALE
NORTH ROAD

Developed per HD 312 reference doc: "Lead Service Line and Future Mapping Project" Issue date: 10/17
 Made By: Erie County Department of Environmental Services 3/17/17
 Date: Erie County D.E.S., Erie County Geographic Information System
 Coordinate System: Projected_AZG_1983_StatePlane_Ohio_Auto_NAD_83_Feet

~~While reviewing this map, the user is advised to consult the Erie County Public Water System Lead Assessment Report for more information on the lead assessment process and the results of the assessment. This map is intended to provide a general overview of the lead assessment results and is not intended to be used for legal purposes. The information on this map is for informational purposes only and should not be used as a basis for any legal action. The information on this map is for informational purposes only and should not be used as a basis for any legal action.~~

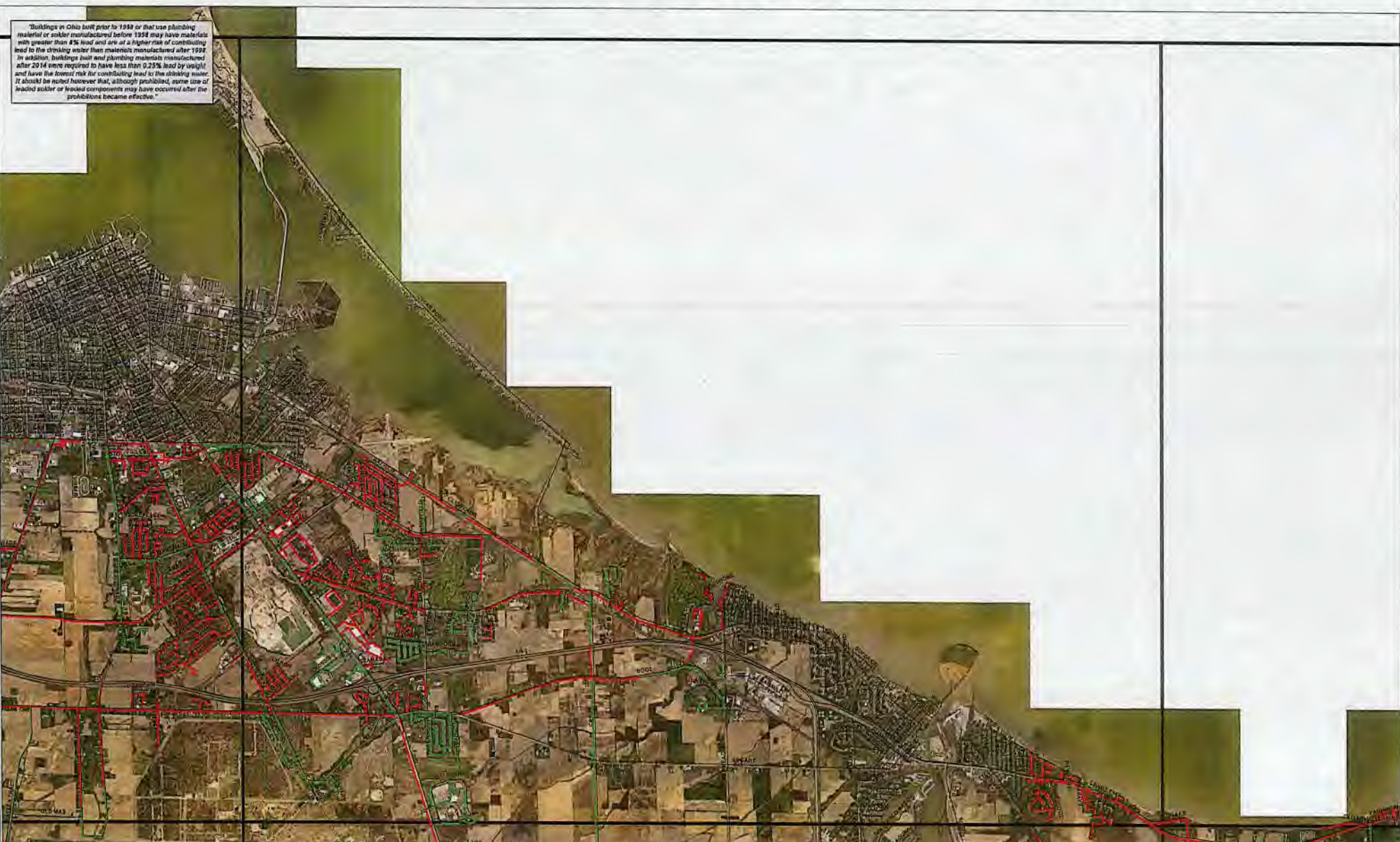


Disclaimer: This County provides this data in the public "as is" which is developed using sources believed to be reliable. The County offers no guarantee of accuracy of the content. Any person using this data shall use the County's liability. This information should be used as a reference tool only.



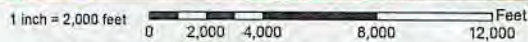
ERIE COUNTY PUBLIC WATER SYSTEM LEAD ASSESSMENT MAP - NORTHCENTRAL DISTRICT

Buildings in Ohio built prior to 1999 or that use plumbing material or solder manufactured before 1998 may have materials with greater than 8% lead and are at a higher risk of contributing lead to the drinking water than materials manufactured after 1998. In addition, buildings built and plumbing materials manufactured after 2014 may be required to have less than 0.25% lead by weight and have the lowest risk for contributing lead to the drinking water. It should be noted however that, although prohibited, some use of leaded solder or leaded components may have occurred after the prohibitions became effective.



Developed per HD 512 reference doc: "Lead Service Line and Fire Hydrant Mapping Project" issue date 10/17
 Made By: Erie County Department of Environmental Services 3/7/17
 Date: Erie County O.C.E.S. Erie County Auditor, 6/2/22
 Coordinate System: Project_NAD_1983_StatePlane_Ohio_North_FIPS_3401_Feet

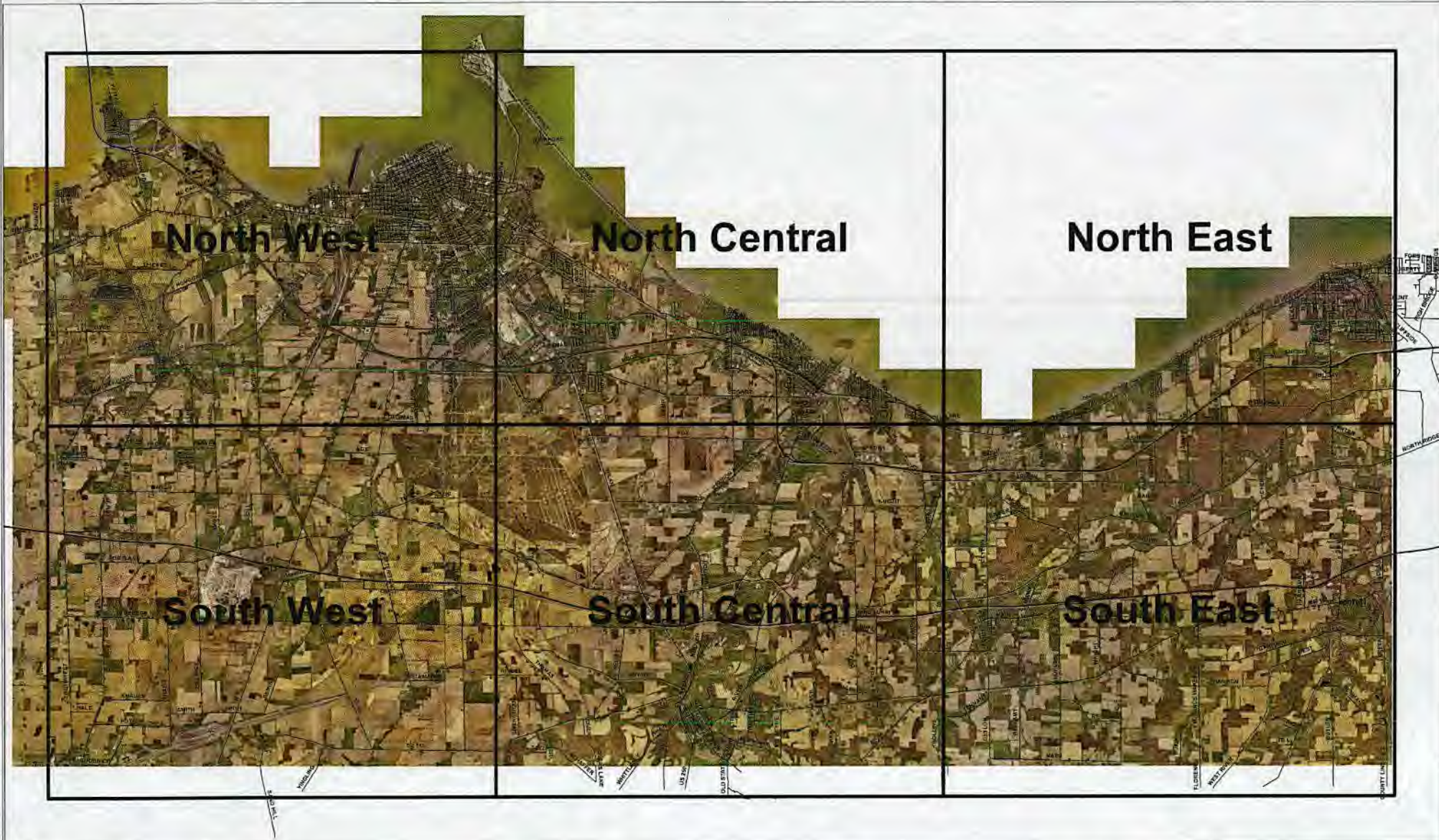
While reviewing this map, red lines represent sections of the Erie County Public Water System where there is potential for lead. Other lines represent sections of the ERPWS that have been assessed and determined to be free of lead. The data was derived from categorizing individual installation dates before 1998 and the second category installed on after October 1998, a lead service line was implemented.



Disclaimer: The County provides this data in the "as is" which is intended solely for informational purposes. The County offers no guarantee or warranty of the content thereof. Any reliance on this information without reference to the County's records is at the user's own risk.



ERIE COUNTY PUBLIC WATER SYSTEM LEAD ASSESSMENT MAP - DISTRICT QUADRANTS



Developed per IED 512 reference doc: "Lead Service Line and Risk Map Mapping Project" date: 06/2017
Made By: Erie County Department of Environmental Services 6/27/17
Date: Erie County D of E S, Erie County Auditor, 6/27/17
Coordinate System: Projected_NAD_1983_StatePlane_Oak_Oahu_FIPS_3401_Feet



Disclaimer: The County selected this data to the public, no warranty is provided being selected to be reliable. The County offers no guarantee, warranty of the project or data. Any use of this data is solely at the user's risk and not the County's liability. This disclaimer shall be printed on all printed materials.