

RE: ERIE CO HURON WEST DISTRICT
Report
Drinking Water Program
Erie County
PWS ID: OH2200903

Huron West OH 4200903



ERIE COUNTY PUBLIC WATER SYSTEM LEAD ASSESSMENT MAP - SOUTHWESTERN DISTRICT

Buildings in Ohio built prior to 1988 or that use plumbing material or solder manufactured before 1988 may have materials with greater than 8% lead and are at a higher risk of contributing lead to the drinking water than materials manufactured after 1988. In addition, buildings built and plumbing materials manufactured after 2014 were required to have less than 0.25% lead by weight and have the lowest risk for contributing lead to the drinking water. It should be noted however that, although prohibited, some use of leaded solder or leaded components may have occurred after the prohibitions became effective.



Developed per RD 312, reference to: "Lead Service Line and Fixture Mapping Project" issue date 12/17.
Made by: Erie County Department of Environmental Services 3/17/17
City: Erie County D.O.E.S., Erie County Auditor, USGS
Coordinate System: Projected_MGS_1883_StatePlane_Ohio_North_FIPS_3147_Feet

While reviewing 1988 marked lines (purple sections) of the Erie County Public Water System that have the potential to contribute lead, Green Flag requirements describe those 1988 lines that have low potential to contribute lead. The distinction between the two fields was determined using categorizing fixture installation dates before 1988 and the earliest category installed on or after 1988. In 1988, a lead service line was implemented.

1 inch = 2,000 feet
0 2,000 4,000 8,000 12,000 Feet

Disclaimer: The County provides this data in the public "as is" which is intended solely to provide information to the public. The County offers no guarantee or warranty of the content and/or accuracy of the information. For additional information, please contact the County Auditor. This document should be stored as reference material only.



ERIE COUNTY PUBLIC WATER SYSTEM LEAD ASSESSMENT MAP - NORTHWESTERN DISTRICT

"Buildings in Ohio built prior to 1998 or that use plumbing material or solder manufactured before 1998 may have materials with greater than 6% lead and are at a higher risk of contributing lead to the drinking water than materials manufactured after 1998. In addition, buildings built and plumbing materials manufactured after 2014 were required to have less than 0.25% lead by weight and have the lowest risk for contributing lead to the drinking water. It should be noted however that, although prohibited, some use of leaded solder or leaded components may have occurred after the prohibitions became effective."



Developed per HD 512, reference doc. "Lead Service Line and Fixture Mapping Project" issue date 10/17.
 Made by: Erie County Department of Environmental Services 3/2017.
 Date: Erie County O.D.E.S., Erie County Auditor, 10/2016
 Coordinate System: Projected_NAD_1983_StatePlane_Ohio_North_FIPS_3401_Proj

While reviewing this map, red lines represent sections of the Erie County Public Water System that have high potential for containing lead. Green lines represent sections of the Erie County that have low potential to contain lead. The water treatment plant on the Erie Canal was decommissioned after the piping and machine installation dates before 1998 and the second water treatment plant was installed on the Erie Canal in 1998, a lead service line was implemented.

1 inch = 2,000 feet
 0 2,000 4,000 8,000 12,000 Feet

Disclaimer: The County neither has title in the public use or restricted distribution system network, nor is it responsible for the maintenance of the system. The County shall not be held responsible for the accuracy of the information provided. Any decisions made by the user are solely their own responsibility. This document is of the County of Erie and is not a contract.



ERIE COUNTY PUBLIC WATER SYSTEM LEAD ASSESSMENT MAP - NORTHEASTERN DISTRICT

"Buildings in Ohio built prior to 1998 or that use plumbing material or solder manufactured before 1998 may have materials with greater than 0% lead and are at a higher risk of contributing lead to the drinking water than materials manufactured after 1998. In addition, buildings built and plumbing materials manufactured after 2014 were required to have less than 0.25% lead by weight and have the lowest risk for contributing lead to the drinking water. It should be noted however that, although prohibited, some use of leaded solder or leaded components may have occurred after the prohibitions became effective."



While viewing this map, red lines represent sections of the Erie County Public Water System that have their potential to contain lead. Orange lines represent sections of the Erie County Public Water System that have the potential to contain lead. The information shown on this map was derived from geographic information system data before 1998 and if the existing category included on after 1998, a lead service line was implemented.

1 inch = 2,000 feet 0 2,000 4,000 8,000 12,000 Feet

Disclaimer: The County is not liable for any errors or omissions in this map. The County is not responsible for any damages or injuries resulting from the use of this map. The County is not liable for any damages or injuries resulting from the use of this map.

Developed per HD 512 reference doc. "Lead Service Line and Fixture Mapping Project" Issue Date 10/17/17
 Made by: Erie County Department of Environmental Services 2/7/17
 Date: Erie County GIS Data, Erie County Auditor: 10/17/17
 Coordinate System: Projected_NAD_1983_StatePlane_Ohio_FIPS_3401_FWS



ERIE COUNTY PUBLIC WATER SYSTEM LEAD ASSESSMENT MAP - SOUTHEASTERN DISTRICT

"Buildings in Ohio built prior to 1988 or that use plumbing material or solder manufactured before 1988 may have materials with greater than 8% lead and are at a higher risk of contributing lead to the drinking water than materials manufactured after 1988. In addition, buildings built and plumbing materials manufactured after 2014 were required to have less than 0.25% lead by weight and have the lowest risk for contributing lead to the drinking water. It should be noted however that, although prohibited, some use of leaded solder or leaded components may have occurred after the prohibitions became effective."

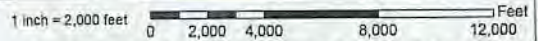


CORSE CREEK
NORTH WOODS



Developed per JIS 512, reference Ohio "Lead Service Line and Public Mapping Project" Issue Date 1/6/17.
Data By: Erie County Department of Environmental Services 2017.
Data: Erie County D.O.E.S., Erie County Auditor, USGS.
Coordinate System: Projected_MAD_1983_StatePlane_Ohio_NAD83_PPS_3401_Feet

While reviewing this map, red lines represent sections of the Erie County Public Water System that have high potential to contain lead. Green lines represent sections of the ERPWS that have the potential to contain lead. The municipalities that supply the water to these red-lined areas are not shown on this map. The municipalities that supply the water to these green-lined areas are not shown on this map. A lead service line was implemented on any red-lined area after 1988 or 1989.

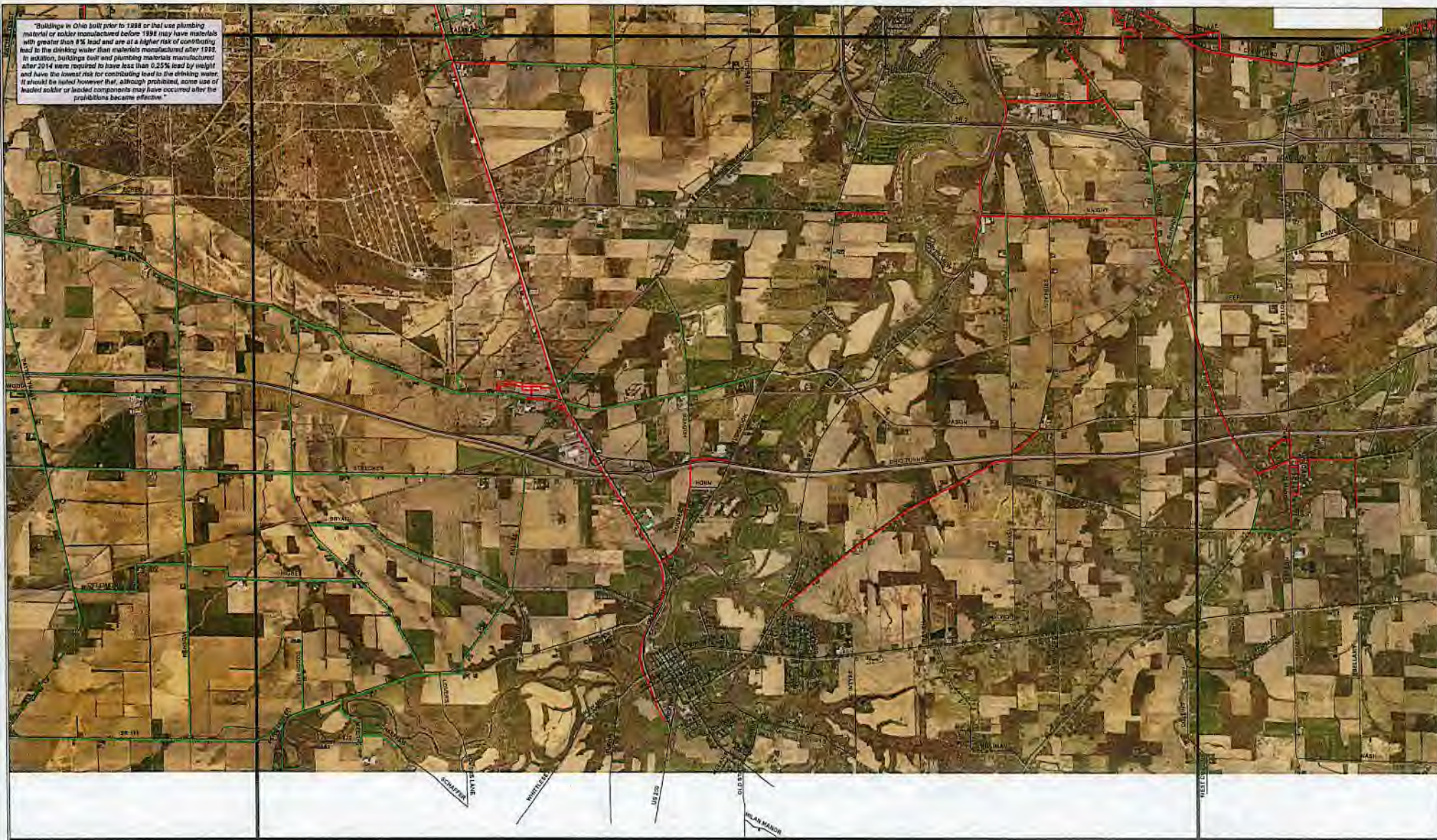


Disclaimer: The County provides this data as the public "as is" which is provided using sources believed to be reliable. The County offers no guarantee of accuracy of the content presented. Any reliance on this information is solely the user's responsibility. This information shall be utilized as reference material only.



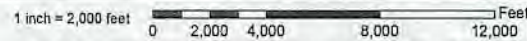
ERIE COUNTY PUBLIC WATER SYSTEM LEAD ASSESSMENT MAP - SOUTH CENTRAL DISTRICT

"Buildings in Ohio built prior to 1988 or that use plumbing materials or solder manufactured before 1988 may have materials with greater than 1% lead and are at a higher risk of contributing lead to the drinking water than materials manufactured after 1988. In addition, buildings built and plumbing materials manufactured after 2014 were required to have less than 0.25% lead by weight and have the lowest risk for contributing lead to the drinking water. It should be noted however that, although prohibited, some use of leaded solder or leaded components may have occurred after the prohibitions became effective."



Developed per IRI 512; reference to: "Lead Service Line and Fixure Mapping Project" data date 10/17.
 Made by: Erie County Department of Environmental Services 5/2017.
 Date: Erie County GIS 5.2, Erie County Aerial: 10/15
 Coordinate System: Projected_NAD_1983_StatePlane_Ohio_MidW_PWS_2401_Feet

While this map shows marked lines representing portions of the Erie County Public Water System that have had potential to contain lead, given the inherent complexity of the City's water system, there is a low potential to contain lead. The distinction between the two criteria was derived from engineering and inspection data before 1988 and the existing catalog installed on other lines in 1988, a third criteria pipe was implemented.

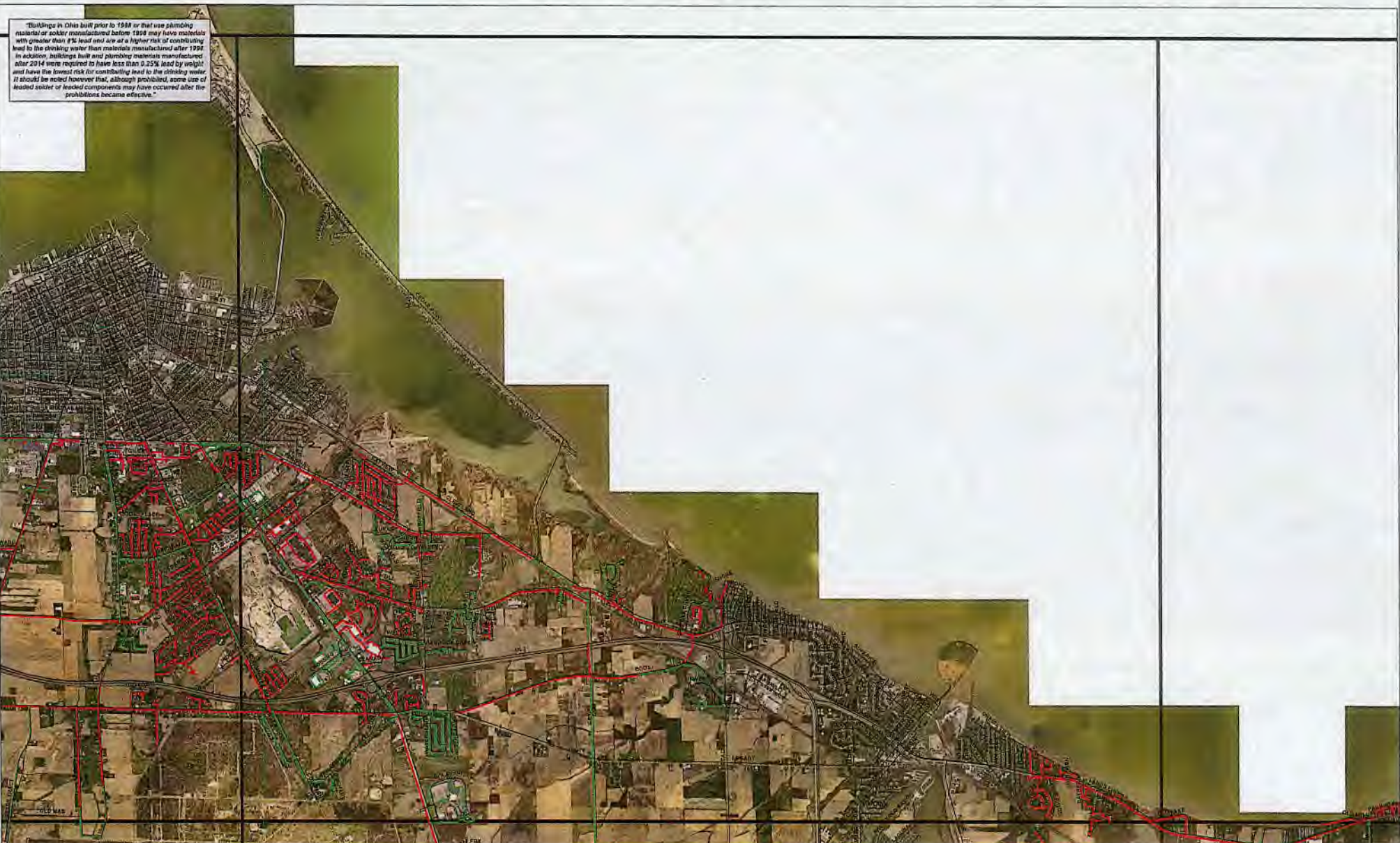


Disclaimer: This County provided this map to the public "as is" which is developed using sources believed to be reliable. The County offers no guarantee/warranty of the content accuracy. Any statements made on this map are not to be used for any legal or other purposes.



ERIE COUNTY PUBLIC WATER SYSTEM LEAD ASSESSMENT MAP - NORTHCENTRAL DISTRICT

"Buildings in Ohio built prior to 1998 or that use plumbing materials or solder manufactured before 1998 may have materials with greater than 1% lead and are at a higher risk of contributing lead to the drinking water than materials manufactured after 1998. In addition, buildings built and plumbing materials manufactured after 2014 were required to have less than 0.25% lead by weight and have the lowest risk for contributing lead to the drinking water. It should be noted however that, although prohibited, some use of leaded solder or leaded components may have occurred after the prohibitions became effective."



Developed per RH 512 Reference Inc. "Lead Service Line and Fixture Mapping Project" issue date 10/17.
 Made By Erie County Department of Environmental Services 3/2/17
 Data: Erie County GIS Data; Erie County Auditor 1/2/20
 Coordinate System: Projected_NAD_83_2_SpherPlace_Chis_North_PRC_2011_Feet

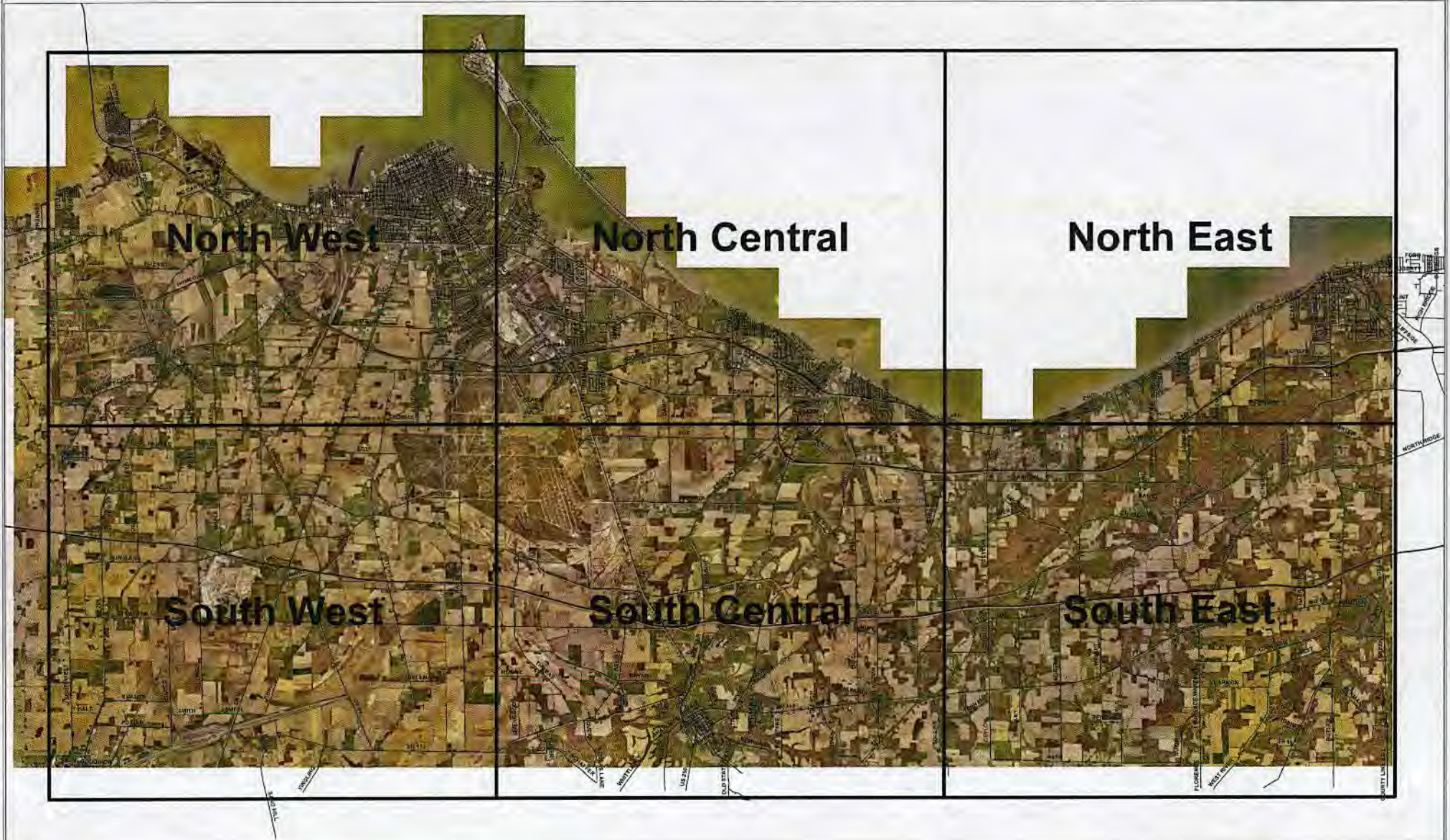
While reviewing this map, red lines represent sections of the Erie County Public Water System that have high potential to contain lead. Green lines represent sections of the Erie County Public Water System that have low potential to contain lead. The mapping effort described in this map was derived from geospatial machine installation data before 1998 and the second category installed on after 1998. In 1998, a lead service ban was implemented.

1 inch = 2,000 feet
 0 2,000 4,000 8,000 12,000 Feet

Disclaimer: The County provides this data as the "best" available and does not warrant its accuracy. The County offers no guarantee, warranty or the implied or explicit. Any analysis or use of this data is at the user's discretion. This document shall not be used as evidence in any legal proceeding.



ERIE COUNTY PUBLIC WATER SYSTEM LEAD ASSESSMENT MAP - DISTRICT QUADRANTS



Downloaded per HG 512, Infravision Inc. "Lead Service Line and Fabric Missing Project" issue date 5/6/17.
Made by: Erie County Department of Environmental Services 3/7/17
Date: Erie County D.D.E.S., Erie County Auditor, USGS
Coordinate System: Projected_MAQ_1983_StatePlane_Ohio_North_FIPS_3401_Feet

0 1 2 4 6 Miles

Disclaimer: The County assumes no liability for the results of or use of data developed by a third party. The County offers no guarantee of accuracy of the data provided. Any decisions made based on this data will be the user's responsibility. The information shall be retained as reference material only.