

RE: ERIE CO HURON EAST DISTRICT
Report
Drinking Water Program
Erie County
PWS ID: OH2200403

Huron East 012200403



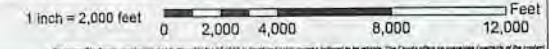
ERIE COUNTY PUBLIC WATER SYSTEM LEAD ASSESSMENT MAP - SOUTHEASTERN DISTRICT

"Buildings in Ohio built prior to 1988 or that use plumbing material or solder manufactured before 1988 may have materials with greater than 8% lead and are at a higher risk of contributing lead to the drinking water than materials manufactured after 1988. In addition, buildings built and plumbing materials manufactured after 2014 were required to have less than 0.25% lead by weight and have the lowest risk for contributing lead to the drinking water. It should be noted however that, although prohibited, some use of leaded solder or leaded components may have occurred after the prohibitions became effective."



Download per HD 512 reference doc: "Lead Service Line and Future Mapping Project" Issue date 1/6/17.
Made by Erie County Department of Environmental Services 3/27/17.
Date: Erie County O.G.E.S., Erie County Auditor, USGS.
Coordinate System: Projected_NAD_1983_StatePlane_Ohio_North_FIPS_3401_Feet

While reviewing this map, red lines represent sections of the Erie County Public Water System that have not been inspected for lead. Green lines represent sections of the EPSW that have been inspected for lead. The green lines represent the highest risk category: pipe soldering, machine installation dates before 1988 and the second category installed on after 1988 to 1994, a lead service line was implemented.



Disclaimer: The County provides this map to the public "as is" and is developed using sources believed to be reliable. The County offers no guarantee of accuracy of the information. Any user should make a copy of this data and verify its accuracy before the County's liability. This information should be used as a reference only.



ERIE COUNTY PUBLIC WATER SYSTEM LEAD ASSESSMENT MAP - NORTHEASTERN DISTRICT

"Buildings in Ohio built prior to 1998 or that use plumbing material or solder manufactured before 1998 may have materials with greater than 8% lead and are at a higher risk of contributing lead to the drinking water than materials manufactured after 1998. In addition, buildings built and plumbing materials manufactured after 2014 were required to have less than 0.25% lead by weight, and have the lowest risk for contributing lead to the drinking water. It should be noted however that, although prohibited, some use of leaded solder or leaded components may have occurred after the prohibitions became effective."



Developed per AEC 812 reference for: "Lead Service Line and Future Mapping Project" Issue date 1/8/17.
 Made By: Erie County Department of Environmental Services 3/7/17.
 Data: Erie County GIS Data, Erie County Auditor, USGS
 Coordinate System: Projcrd_MAD_183_StatePlane_Ohio_North_FIPS_2027_Feet

While reviewing this map, red lines represent sections of the Erie County Public Water System that have the potential to contain lead. Green lines represent sections of the ES&W that have low potential to contain lead. The distinction between the two critical categories is based on the category of pipe installation dates before 1998 and the critical category installed on after 1998. In 1998, a lead service line was implemented.

1 inch = 2,000 feet
 0 2,000 4,000 8,000 12,000 Feet

Disclaimer: The County provides this data to the public "as is" which is based on any mistakes contained in the data. The County offers no guarantee or warranty of the accuracy of the data. Any user should make their own determination of the accuracy of the data. This information should be used as a reference only.



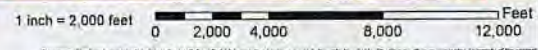
ERIE COUNTY PUBLIC WATER SYSTEM LEAD ASSESSMENT MAP - NORTHWESTERN DISTRICT

Buildings in Ohio built prior to 1994 or that use plumbing material or solder manufactured before 1994 may have materials with greater than 1% lead and are at a higher risk of contributing lead to the drinking water than materials manufactured after 1994. In addition, buildings built and plumbing materials manufactured after 2014 were required to have less than 0.25% lead by weight and have the lowest risk for contributing lead to the drinking water. It should be noted however that, although prohibited, some use of leaded solder or leaded components may have occurred after the prohibitions became effective.



Developed for HD 162, Inventory for "Lead Service Line and Piping Mapping Project" Issue date 10/17
 Made by: Erie County Department of Environmental Services 3/7/18
 Data: Erie County D.O.E.S., Erie County Auditor, USGS
 Coordinate System: Projected_MCR_1983_StatePlane_Ohio_North_FIPS_3402_Feet

While reviewing this map, red lines represent sections in the Erie County Public Water System that have high potential to contain lead. Green lines represent sections with low potential to contain lead. The information on this map was derived from categorizing machine installation data before 1994 and the section category installed on after 1994. In 1994, a lead service line was implemented.



Disclaimer: The County provides this data to the public "as is" and is not responsible for errors or omissions. The County offers no guarantee of accuracy of the content provided. Any decisions made and made acting on this data will be the County's liability. This information shall not be used as a reference requirement.



ERIE COUNTY PUBLIC WATER SYSTEM LEAD ASSESSMENT MAP - SOUTHWESTERN DISTRICT

"Buildings in Ohio built prior to 1988 or that use plumbing material or solder manufactured before 1988 may have materials with greater than 8% lead and are at a higher risk of contributing lead to the drinking water than materials manufactured after 1988. In addition, buildings built and plumbing materials manufactured after 2014 were required to have less than 0.25% lead by weight and have the lowest risk for contributing lead to the drinking water. It should be noted however that, although prohibited, some use of leaded solder or leaded components may have occurred after the prohibitions became effective."



Download per PD 512 reference doc: "Lead Service Line and Fixture Mapping Project" issue date 10/17.
 Made by: Erie County Department of Environmental Services 2/17/21.
 Date: Erie County O.D.E.S., Erie County Assessor, USGS.
 Coordinate System: Projected_GAD_183_StatePlane_Ohio_North_FIPS_3101 Feet

While this map shows marked lines representing portions of the Erie County Public Water System that have been subjected to Corrosion Control System (CCS) treatment, it does not guarantee that the water will have low potential to corrode lead. The distinction between the two critical categories is the date of pipe installation: pipes installed before 1988 and the second category installed on or after 1988. A lead service line was not implemented.

1 inch = 2,000 feet
 0 2,000 4,000 8,000 12,000 Feet

Disclaimer: The County provides this data to the public "as is" which is downloaded using various Internet to be suitable. The County offers no guarantee (warranty of the quality and/or accuracy) and does not warrant the data will be suitable for use without the County's liability. This information should be utilized in conjunction with other data.



ERIE COUNTY PUBLIC WATER SYSTEM LEAD ASSESSMENT MAP - SOUTHCENTRAL DISTRICT

Buildings in Ohio built prior to 1988 or that use plumbing materials or solder manufactured before 1988 may have materials with greater than 8% lead and are at a higher risk of contributing lead to the drinking water than materials manufactured after 1988. In addition, buildings built and plumbing materials manufactured after 2014 were required to have less than 0.25% lead by weight and have the lowest risk for contributing lead to the drinking water. It should be noted however that, although prohibited, some use of leaded solder or leaded components may have occurred after the prohibitions became effective.



Downloaded per GIS 513 reference doc: "Lead Service Line and Filter Mapping Project" issue date 10/17
 Made by: Erie County Department of Environmental Services 3/1/17
 Data: Erie County GIS, Erie County Aerial, USGS
 Coordinate System: NAD83, UTM, Zone 18N, EPS: 3147, Feet

While reviewing the marked pipes (green) sections of the Erie County Public Water System that have the potential to contain lead. Given their recent manufacture date (2014) and their low potential to contain lead, the utility scheduled between the two categories will be removed from categorizing and/or installation dates before 1988 and the second category installed on after 1988 to 1988, a lead service line was implemented.

1 inch = 2,000 feet
 0 2,000 4,000 8,000 12,000 Feet

Disclaimer: The County provides this data in the public "as-is" which is developed using sources believed to be reliable. The County offers no guarantee/warranty of the content herein. Any decisions made and/or actions taken are not the County's liability. This information shall be obtained as reference information only.



ERIE COUNTY PUBLIC WATER SYSTEM LEAD ASSESSMENT MAP - NORTHCENTRAL DISTRICT

"Buildings in Ohio built prior to 1988 or that use painting material or solder manufactured before 1988 may have materials with greater than 8% lead and are at a higher risk of contributing lead to the drinking water than materials manufactured after 1988. In addition, buildings built and plumbing materials manufactured after 2014 are required to have less than 0.25% lead by weight and have the lowest risk for contributing lead to the drinking water. It should be noted however that, although prohibited, some use of leaded solder or leaded components may have occurred after the prohibitions became effective."



Developed per HB 512, reference doc: "Lead Service Line and Fixture Mapping Project" issue date 1/6/17
 Made by: Erie County Department of Environmental Services 3/7/17
 Data: Erie County D.E.S., Erie County Auditor, USGS
 Coordinate System: Projected_NAD_1983_StatePlane_Ohio_Area_FIPS_3401_Feet

While reviewing this map, red lines represent sections of the Erie County Public Water System that have high potential to contain lead. Green lines represent sections of the Erie County Public Water System that have low potential to contain lead. The weighting-based categories on this map were derived from categorizing multiple installation dates before 1988 and the second category installed on after 1988 to 1994, a lead service line was implemented.

1 inch = 2,000 feet

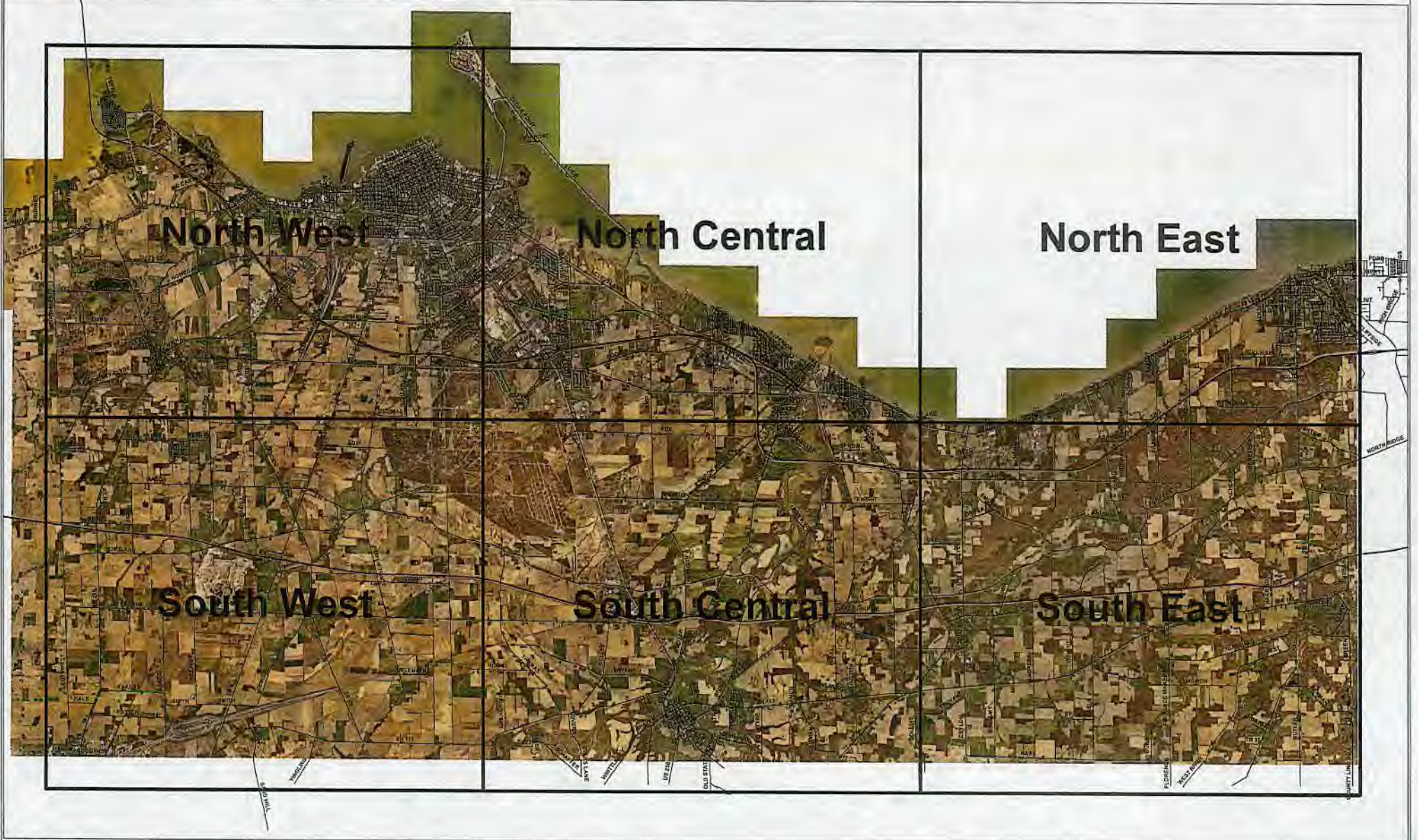
0	2,000	4,000	8,000	12,000
---	-------	-------	-------	--------

Feet

Disclaimer: The County reserves the right to the public use of which is developed using sources referred to in the map. The County offers no guarantee (warranty of no kind) without. Any locations marked on this map will NOT be used by the County's liability. This information shall be utilized as reference information only.



ERIE COUNTY PUBLIC WATER SYSTEM LEAD ASSESSMENT MAP - DISTRICT QUADRANTS



Developed per ORD 312, reference to: "Lead Service Line and Fixture Mapping Project" (air date 1/31/17).
Made by: Erie County Department of Environmental Services 3/7/17.
Data: Erie County D.G.E.S., Erie County Auditor, USEGS.
Coordinate System: Projected_NAD_1983_StatePlane_Ohio_North_FIPS_3401_Feet



Disclaimer: The County guarantees this data to the extent "as-is" and is not responsible for errors or omissions. The County will not guarantee the accuracy of the information. Any decisions made on the basis of this information are the responsibility of the user.