

RE: ERIE CO HURON SOUTH
DISTRICT

Report
Drinking Water Program
Erie County
PWS ID: OH2200703

Huron South 0H2200703



ERIE COUNTY PUBLIC WATER SYSTEM LEAD ASSESSMENT MAP - SOUTHEASTERN DISTRICT

"Buildings in Ohio built prior to 1988 or that use plumbing material or solder manufactured before 1988 may have materials with greater than 4% lead and are at a higher risk of contributing lead to the drinking water than materials manufactured after 1988. In addition, buildings and plumbing materials manufactured after 2014 were required to have less than 0.25% lead by weight and have the lowest risk for contributing lead to the drinking water. It should be noted however that, although prohibited, some use of leaded solder or leaded components may have occurred after the prohibitions became effective."



Downloaded per HD 372 Informational "Lead Service Line and Future Mapping Project" from date 2/6/17.
Made by Erie County Department of Environmental Services 3/7/17.
Data: Erie County 2012 ESRI, Erie County Aerial, USGS.
Coordinate System: PROJCS["NAAD_1982_StatePlane_Ohio_North_FIPS_3401_Feet"]

While reviewing this map, red lines represent sections of the Erie County Public Water System that have the potential to contain lead. Given their respective installation date, 1988, they may have the potential to contain lead. The delineation of these lines is based on the data derived from the public water system's lead service line inventory data before 1988 and the service category installed on or after 1988 to 1988. A lead service line was implemented.

1 inch = 2,000 feet

Disclaimer: The County provides this data to the public "as is" and to develop every process included in its website. The County does not guarantee accuracy of the content. Any reliance made on this data will NOT hold the County liable. The information may be different as reference material only.



ERIE COUNTY PUBLIC WATER SYSTEM LEAD ASSESSMENT MAP - SOUTHWESTERN DISTRICT

Buildings in Ohio built prior to 1986 or that use plumbing material or solder manufactured before 1998 may have materials with greater than 8% lead and are at a higher risk of contributing lead to the drinking water than materials manufactured after 1998. In addition, building tile and painting materials manufactured after 2014 were required to have less than 0.25% lead by weight and have the lowest risk for contributing lead to the drinking water. It should be noted however that, although prohibited, some use of leaded solder or leaded components may have occurred after the prohibitions became effective.



Developed per MD 512, reference doc. "Lead Service Line and PBA Mapping Project" Issue date 10/17.
 Made By: Erie County Department of Environmental Services 3/1/17.
 Date: Erie County D 12.2.16, Erie County Auditor, 1/15/16
 Coordinate System: Projected_MAD_1883_StatePlane_Ohio_NAD_83_3401_Feet

While reviewing the mapped lines represent sections of the Erie County Public Water System that have had potential to contain lead. On the other hand, representative sections of the ECPWS that have not potential to contain lead. The distinction between the two critical categories is the category of public installation date before 1998 and the existing category installed on after 1998 in 1998, a lead service line was implemented.

1 inch = 2,000 feet
 0 2,000 4,000 8,000 12,000 Feet

Disclaimer: The County provides this data to the public "as is" which is deemed being, without liability to be reliable. The County does not guarantee the accuracy of the content. Any person's use of this data without liability to the County's liability. This information shall be used as information only.



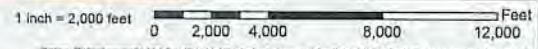
ERIE COUNTY PUBLIC WATER SYSTEM LEAD ASSESSMENT MAP - NORTHEASTERN DISTRICT

"Buildings in Ohio built prior to 1992 or that use plumbing material or solder manufactured before 1992 may have materials with greater than 8% lead and are at a higher risk of contributing lead to the drinking water than materials manufactured after 1992. In addition, buildings built and plumbing materials manufactured after 2014 were required to have less than 0.25% lead by weight and have the lowest risk for contributing lead to the drinking water. It should be noted however that, although prohibited, some use of leaded solder or leaded components may have occurred after the prohibitions became effective."



Developed per JOB #12, Reference Inc. "Lead Service Line and Future Mapping Project" Issue date 10/17.
 Made by: Erie County Department of Environmental Services 3/1/17.
 Date: Erie County GIS Data, Erie County District 10/15/15
 Coordinate System: PROJCRS_MAD_1983_StatePlane_Ohio_North_FIPS_3401 Feet

While reviewing this map, red lines represent sections of the Erie County Public Water System that have the potential to contain lead. Other lines represent sections of the Erie County Public Water System that have the potential to contain lead, but which do not meet the criteria for being identified as high risk. All information on this map was derived from data collected by the Erie County Public Water System and is not intended to be used for any purpose other than that for which it was originally intended. No liability is assumed for any errors or omissions on this map.



Disclaimer: The County provides this data in the public "as is" which is distributed solely for informational purposes. The County office is not responsible for any errors or omissions on this map. Any distribution or use of this data without the County's liability. This information should be used as a reference only.



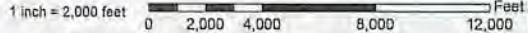
ERIE COUNTY PUBLIC WATER SYSTEM LEAD ASSESSMENT MAP - SOUTH CENTRAL DISTRICT

"Buildings in Ohio built prior to 1991 or that use plumbing material or solder manufactured before 1991 may have materials with greater than 8% lead and are at a higher risk of contributing lead to the drinking water than materials manufactured after 1991. In addition, buildings built and plumbing materials manufactured after 2014 were required to have less than 0.25% lead by weight and have the lowest risk for contributing lead to the drinking water. It should be noted however that, although prohibited, some use of leaded solder or leaded components may have occurred after the prohibitions became effective."



Developed per HB 512, relative to: "Lead Service Line and Future Mapping Project" issue date 10/17.
 Made by Erie County Department of Environmental Services 3/2017.
 Date Erie County O.D.S.E., Erie County Agency: 3/2017.
 Coordinate System: Projected_NAD_1983_StatePlane_Ohio_North_FIPS_3401_Feet

While reviewing the map, red lines represent sections of the Erie County Public Water System that have not passed the copper/lead. Green lines represent sections of the Erie County Public Water System that have passed the copper/lead. The information between the two lines was derived from sampling stations installed before 2014 and the second category (installed on or after 10/16/1991, a lead service line was implemented).



Disclaimer: The County makes no data in the public use of which is developed using sources included in the website. The County reflects no guarantee/accuracy of the content provided. Any contents made and made adding this data will NOT be the County's liability. This information should be utilized as reference material only.



ERIE COUNTY PUBLIC WATER SYSTEM LEAD ASSESSMENT MAP - NORTHCENTRAL DISTRICT

"Buildings in Ohio built prior to 1998 or that use plumbing material or solder manufactured before 1998 may have materials with greater than 8% lead and are at a higher risk of contributing lead to the drinking water than materials manufactured after 1998. In addition, buildings built and plumbing materials manufactured after 2014 were required to have less than 0.25% lead by weight and have the lowest risk for contributing lead to the drinking water. It should be noted however that, although prohibited, some use of leaded solder or leaded components may have occurred after the prohibitions became effective."



Download per 101.512, Information doc: "Lead Service Line and Future Mapping Project" item date 10/17.
 Made by: Erie County Department of Environmental Services 10/17
 Date: Erie County D.E.S., Erie County Auditor 1/3/22
 Coordinate System: Projected_MAD_1983_StatePlane_Ohio_North_PPS_3011_Feet

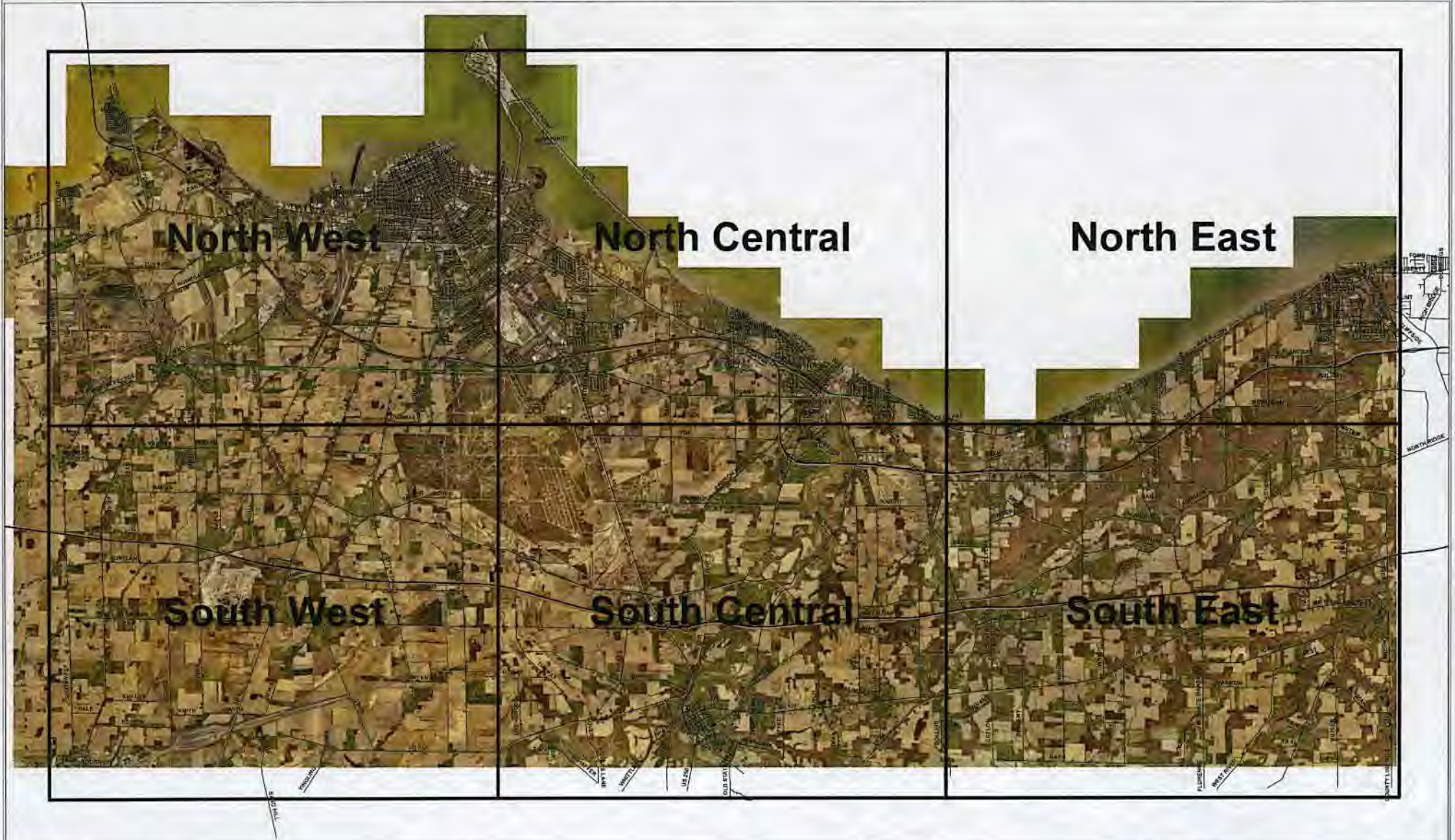
While reviewing this map and blue impression sections of the Erie County Public Water System that have high potential to contribute lead, certain lines were identified as high risk. High risk lines are those that are in the Northcentral District and are in the category of high risk. High risk lines were identified from public utility installation data before 1998 and the general category installed on or after 1998, a lead service line was implemented.

1 inch = 2,000 feet
 0 2,000 4,000 8,000 12,000 Feet

Disclaimer: The County neither endorses nor assumes liability for the data. The County neither endorses nor assumes liability for the data. The County neither endorses nor assumes liability for the data. The County neither endorses nor assumes liability for the data.



ERIE COUNTY PUBLIC WATER SYSTEM LEAD ASSESSMENT MAP - DISTRICT QUADRANTS



Developed per GIS 010, reference to: "Lead Service Line and Fittings Mapping Project" from date 10/17.
Made by: Erie County Department of Environmental Services 5/17/17.
Data: Erie County GIS, Erie County Assessor 10/15.
Coordinate System: Projected_NAD_1983_StatePlane_Ohio_North_FIPS_3141_Feet

0 1 2 4 6 Miles
Disclaimer: The County assumes no liability for errors or omissions in this map. The County offers no guarantee of accuracy of the content hereof. Any user who uses this map will NOT hold the County liable. This information should be used as reference material only.