

RE: ERIE CO VERMILION W DISTRICT  
Report  
Drinking Water Program  
Erie County  
PWS ID: OH2201703

Vermilion West

0#2201703



# ERIE COUNTY PUBLIC WATER SYSTEM LEAD ASSESSMENT MAP - SOUTHWESTERN DISTRICT

"Buildings in Ohio built prior to 1988 or that use plumbing material or solder manufactured before 1988 may have materials with greater than 5% lead and are at a higher risk of contributing lead to the drinking water than materials manufactured after 1988. In addition, buildings built and plumbing materials manufactured after 2014 were required to have less than 0.25% lead by weight and have the lowest risk for contributing lead to the drinking water. It should be noted however that, although prohibited, some use of leaded solder or leaded components may have occurred after the prohibitions became effective."



RECEIVED

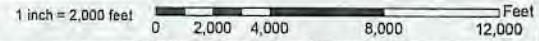
MAR 08 2017

DDAGW - NWDO

While reviewing this marked area, please note that the Erie County Public Water System has been identified as having a lead service pipe installed before 1988. This information was obtained from the Erie County Public Water System's lead service pipe inventory. The information was obtained from the Erie County Public Water System's lead service pipe inventory. The information was obtained from the Erie County Public Water System's lead service pipe inventory.



Download per NB 310 reference plan: "Lead Service Line and Future Mapping Project" issued  
 Made by: Erie County Department of Environmental Services 3/8/17  
 Drawn by: Erie County D.E.S., Erie County Assessor, USGS  
 Coordinate System: Projected\_NAD\_1983\_StatePlane\_Ohio\_NWDO\_FIPS\_3401 Feet



Disclaimer: The County presents this map to the public "as is" which is considered advisory character and is not intended to be used for any purpose other than general information. The County does not warrant the accuracy of the content provided. Any assessment made for more information should contact the County's Public Works Department. This information is for informational purposes only.



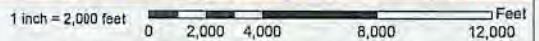
# ERIE COUNTY PUBLIC WATER SYSTEM LEAD ASSESSMENT MAP - NORTHWESTERN DISTRICT

"Buildings in Ohio built prior to 1998 or that use plumbing material or solder manufactured before 1998 may have materials with greater than 4% lead and are at a higher risk of contributing lead to the drinking water than materials manufactured after 1998. In addition, buildings built and plumbing materials manufactured after 2014 were required to have less than 0.25% lead by weight and have the lowest risk for contributing lead to the drinking water. It should be noted however that, although prohibited, some use of leaded solder or braided components may have occurred after the prohibitions became effective."



Developed per H.B. 512, referenced in: Lead Service Line and Fixture Mapping Project Issue date 10/17.  
 Made by: Erie County Department of Environmental Services 2017.  
 Data: Erie County, D.C.E.S., Erie County Auditor, USGS.  
 Coordinate System: Projected\_NAD\_1983\_StatePlane\_Ohio\_North\_FIPS\_3401\_Proj

While reviewing this map, red lines represent sections of the Erie County Public Water System that have the potential to contain lead. Green lines represent sections of the EPSWS that have the potential to contain lead. The distinction between the two criteria was derived from engineering practice installation dates before 1998 and the general engineering standard practice (ENR) in 1998, a lead service line was implemented.



Disclaimer: The County provides this data to the public. We do not warrant any accuracy or liability for its use. The County offers its geographic information system data as a public service. Any reliance on this data is solely at the user's risk. This information should not be used as a substitute for professional engineering or other services.



# ERIE COUNTY PUBLIC WATER SYSTEM LEAD ASSESSMENT MAP - NORTHEASTERN DISTRICT

"Buildings in Ohio built prior to 1988 or that use plumbing material or solder manufactured before 1988 may have materials with greater than 9% lead and are at a higher risk of contributing lead to the drinking water than materials manufactured after 1988. In addition, buildings built and plumbing materials manufactured after 2014 were required to have less than 0.25% lead by weight and have the lowest risk for contributing lead to the drinking water. It should be noted however that, although prohibited, some use of leaded solder or leaded components may have occurred after the prohibitions become effective."



Digitized by: NS 512, reference to: "Lead Service Line and Future Mapping Project" issue date: 10/17  
 Made by: Erie County Department of Environmental Services 3/27/17  
 Date: Erie County GIS 2017, Erie County Auditor 10/2015  
 Coordinate System: FIPS502\_NAD\_1983\_StatePlane\_Ohio\_North\_FIPS\_3402\_Feet

While reviewing this map, you may see red areas of the Erie County Public Water System that have high potential for lead. These areas represent the highest risk of lead in the water supply. The water main and service lines in these areas were installed before 1988 and the second category installed on or after 1988. A lead service line was implemented.



Disclaimer: The County provides this data in the public domain. It is not intended to be used for any purpose other than the one intended. The County offers no warranty of the accuracy of the data. Any reliance on the data is at the user's risk. The County offers no warranty of the accuracy of the data.



# ERIE COUNTY PUBLIC WATER SYSTEM LEAD ASSESSMENT MAP - SOUTHEASTERN DISTRICT

"Buildings in Ohio built prior to 1938 or that use plumbing material or solder manufactured before 1998 may have materials with greater than 8% lead and are at a higher risk of contributing lead to the drinking water than materials manufactured after 1998. In addition, buildings built and plumbing materials manufactured after 2014 were required to have less than 0.25% lead by weight and have the lowest risk for contributing lead to the drinking water. It should be noted however that, although prohibited, some use of leaded solder or leaded components may have occurred after the prohibitions became effective."



CORE CHANGE  
NORTH ROAD

Developed per HD 512, reference also: "Lead Service Line and Fixture Mapping Project" Issue date 1/07/7.  
 Maps by Erie County Department of Environmental Services 2/1/11.  
 Data: Erie County D.G.S.S., Erie County Auditor, USGS.  
 Coordinate System: Projected\_MAD\_1443\_StatePlane\_Ohio\_State\_FIPS\_3401\_Proj

While reviewing the mapped lines in certain sections of the Erie County Public Water System that have high potential for contain lead, Green lines represent lead service lines that have low potential for containing lead. The utility department does not intend to remove them from circulation until their installation dates before 1998 and the second category installed and after 1998 in 1998, a lead service line was implemented.

1 inch = 2,000 feet  
 0 2,000 4,000 8,000 12,000 Feet

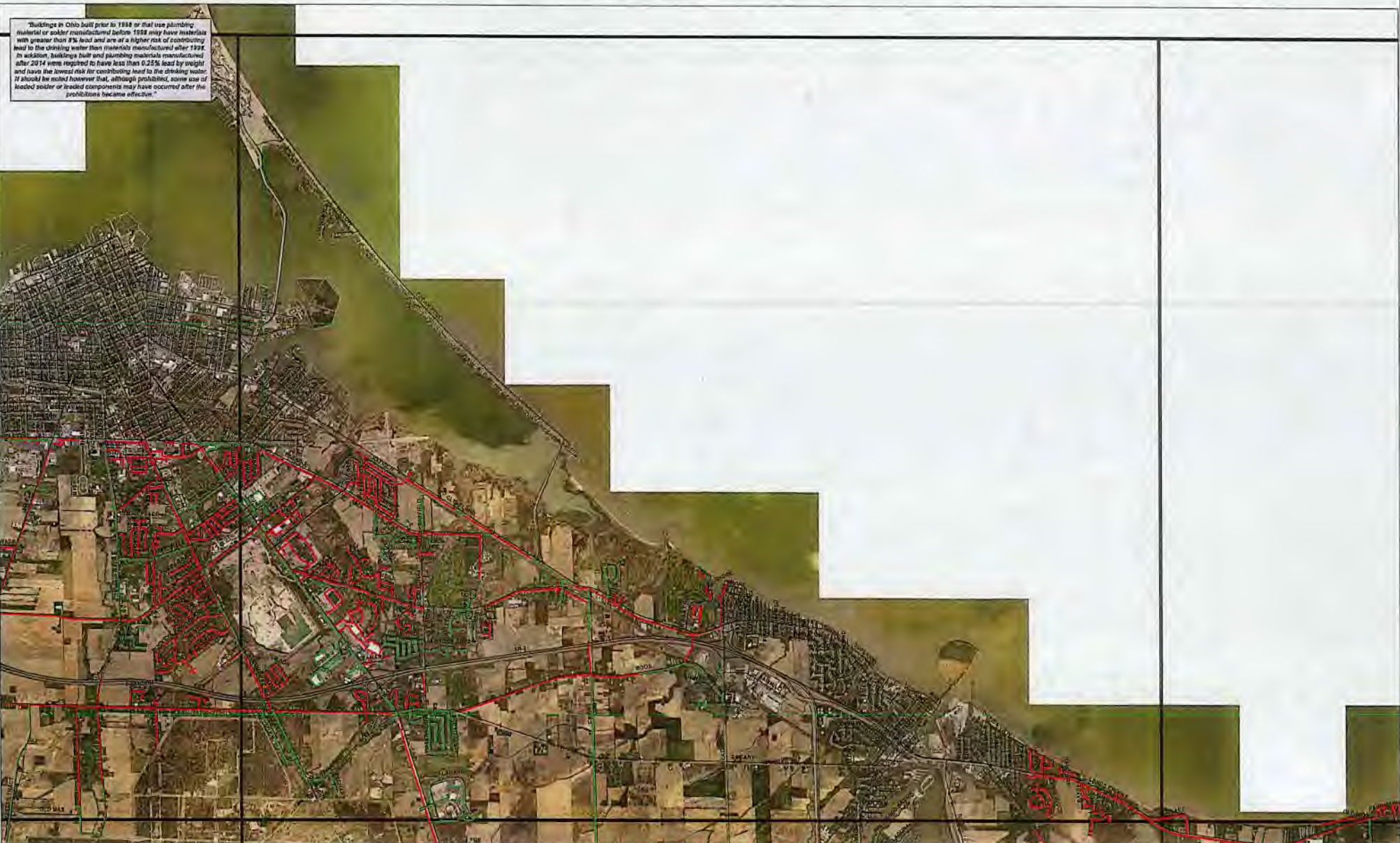
Disclaimer: The County provides this data in the public "as is" which is developed using sources believed to be reliable. The County offers no guarantee or warranty of the content. Any reliance placed on this data will NOT be held by the County's liability. The information should be used as reference material only.





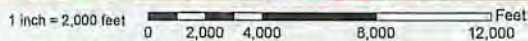
# ERIE COUNTY PUBLIC WATER SYSTEM LEAD ASSESSMENT MAP - NORTHCENTRAL DISTRICT

"Buildings in Ohio built prior to 1998 or that use plumbing material or solder manufactured before 1998 may have materials with greater than 9% lead and are at a higher risk of contributing lead to the drinking water than materials manufactured after 1998. In addition, buildings built and plumbing materials manufactured after 2014 were required to have less than 0.25% lead by weight and have the lowest risk for contributing lead to the drinking water. It should be noted however that, although prohibited, some use of leaded solder or leaded components may have occurred after the prohibitions became effective."



Developed per HD 512 reference doc. "Lead Service Line and Fixture Mapping Project" Issue Date 10/17.  
 Made By: Erie County Department of Environmental Services 3/21/17.  
 Date: Erie County GIS, Erie County Assessor, 1/20/18  
 Coordinate System: Projected\_MAD\_1882\_StatePlane\_Ohio\_North\_FIPS\_3401\_Feet

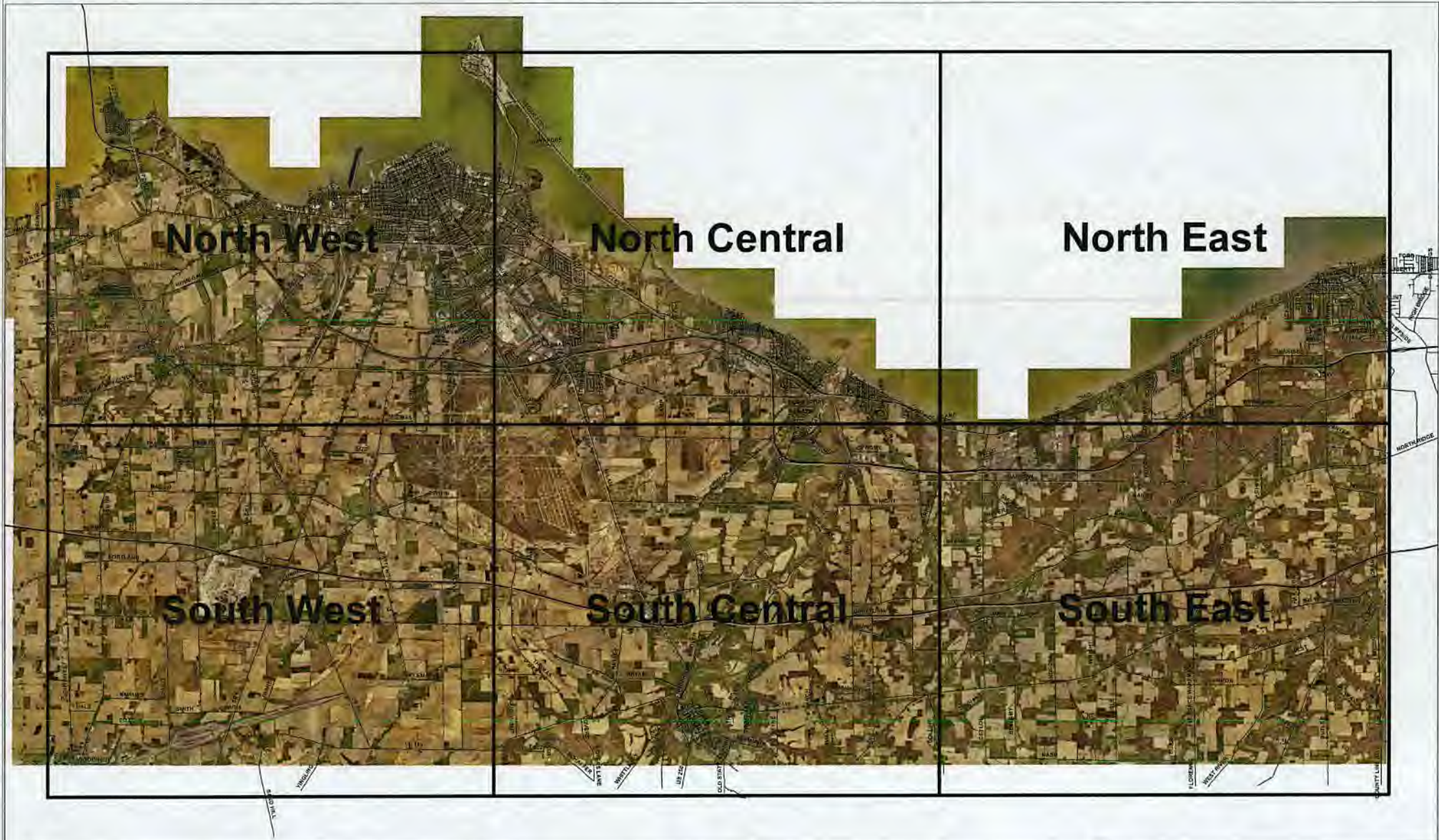
While reviewing this map, red lines represent sections of the Erie County Public Water System that have the potential to contain lead. Other lines represent sections of the Erie County Public Water System that have the potential to contain lead. The mapping was done on the basis of information gathered from a sampling program installation dates before 1998 and the second category (installed on after 1998) is a lead service line with no sampling.



Disclaimer: The County provides this data in the public "as is" which is developed using sources believed to be reliable. The County offers no particular warranty of the content thereof. Any decisions made and/or any liability that may result shall remain the County's liability. This information should not be relied on without independent verification.



# ERIE COUNTY PUBLIC WATER SYSTEM LEAD ASSESSMENT MAP - DISTRICT QUADRANTS



Downloaded per GIS 512 reference for "Lead Service Line and Future Mapping Project" done June 1/2017.  
 Made by Erie County Department of Environmental Services 3/21/17  
 Data: Erie County GIS, U.S.G.S. One County public USGS  
 Coordinate System: Projected\_NAD\_1983\_StatePlane\_Ohio\_North\_FIPS\_5101\_Feet



Disclaimer: The County provides this data to the public "as is" which is distributed using reasonable effort to be reliable. The County offers no guarantee (warranty) of the content included. Any deliberate misuse or reliance on this data will NOT be the County's liability. This information should be utilized as reference (potential only).