

RE: ERIE CO VERMILION DISTRICT  
Report  
Drinking Water Program  
Erie County  
PWS ID: OH2200803



Vermilion 042200803



# ERIE COUNTY PUBLIC WATER SYSTEM LEAD ASSESSMENT MAP - SOUTHWESTERN DISTRICT

"Buildings in Ohio built prior to 1998 or that use plumbing material or other manufactured before 1998 may have materials with greater than 6% lead and are at a higher risk of contributing lead to the drinking water than materials manufactured after 1998. In addition, buildings built and plumbing materials manufactured after 2014 were required to have less than 0.25% lead by weight and have the lowest risk for contributing lead to the drinking water. It should be noted however that, although prohibited, some use of leaded solder or leaded components may have occurred after the prohibitions became effective."



Downloaded per FED 572 reference for "Lead Service Line and Fixture Mapping Project" issue date 3/6/17.  
Made by: Erie County Department of Environmental Services 3/7/17  
File: Erie County GIS ESRI, Erie County Auditor USGS  
Coordinate System: Projected\_NAD\_2011\_StatePlane\_Ohio\_North\_FIPS\_3401\_Feet

While reviewing this map, red lines represent sections of the Erie County Public Water System that have high potential to contain lead. Green lines represent sections of the Erie County Public Water System that have low potential to contain lead. The water main segments depicted on this map were derived from categorizing manholes installation dates before 1998 and the existing category installed on after 1998 to 1998. A lead service line was implemented.

1 inch = 2,000 feet



Disclaimer: The County guarantees the data in this public "as is" which is uncorrected using practices believed to be suitable. The County offers no guarantee of accuracy of the project. Any questions should be directed to the County's Public Works Department. This information should be utilized as a reference only.





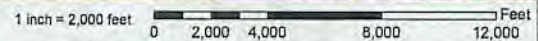
# ERIE COUNTY PUBLIC WATER SYSTEM LEAD ASSESSMENT MAP - NORTHWESTERN DISTRICT

"Buildings in Ohio built prior to 1998 or that use plumbing material or solder manufactured before 1998 may have materials with greater than 9% lead and are at a higher risk of contributing lead to the drinking water than materials manufactured after 1998. In addition, buildings built and plumbing materials manufactured after 2014 were required to have less than 0.25% lead by weight and have the lowest risk for contributing lead to the drinking water. It should be noted however that, although prohibited, some use of leaded solder or leaded components may have occurred after the prohibitions became effective."



Discussed per 78 512, reference also, "Lead Service Line and Future Mapping Project" issue date 08/17.  
 Made by: Erie County Department of Environmental Services 3/7/17.  
 Plan: Erie County GIS ES, Erie County Assessor, USGS.  
 Coordinate System: Project\_NAD\_1983\_StatePlane\_Ohio\_North\_FIPS\_3401\_Feet

While viewing this map, red lines represent sections of the Erie County Public Water System that have the potential to contain lead. Green lines represent sections of the system that may have the potential to contain lead. The mapping was done based on the critical path method from performing a lead assessment before 1998 and the critical path method from performing a lead assessment after 1998. A lead service line was installed on other 1998-1999, a lead service line was installed.



Disclaimer: The County provides this map to the public for informational purposes only. The County does not guarantee the accuracy of the information provided. Any decisions made or actions taken based on this map are the user's responsibility. The information on this map is for informational purposes only.





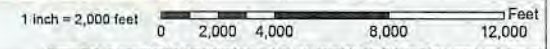
# ERIE COUNTY PUBLIC WATER SYSTEM LEAD ASSESSMENT MAP - NORTHEASTERN DISTRICT

"Buildings in Ohio built prior to 1998 or that use plumbing material or solder manufactured before 1998 may have materials with greater than 8% lead and are at a higher risk of contributing lead to the drinking water than materials manufactured after 1998. In addition, buildings built and plumbing materials manufactured after 2014 were required to have less than 0.25% lead by weight and have the lowest risk for contributing lead to the drinking water. It should be noted however that, although prohibited, some use of leaded solder or leaded components may have occurred after the prohibitions became effective."



Developed per HD 512; reference dot: "Lead Service Line and Future Mapping Project" issue date 1/1/17.  
 Made by: Erie County Department of Environmental Services 3/17/17.  
 Date: Erie County GIS 2.0.2.0, Erie County Auditor, GIS/IS.  
 Coordinate System: Projected\_NAD\_1983\_StatePlane\_Ohio\_North\_FIPS\_2401\_Feet

While revision 016 marked lines represent sections of the Erie County Public Water System that have been subjected to certain lead, copper based reduction practices, other sections that have low potential to contribute lead. The distinction between the two classes was derived from performing a lead risk assessment based on data before 1998 and the second category installed on after 1998. In 1998, a lead service line was implemented.



Disclaimer: The County provides this data to the public for use in which it developed using sources believed to be reliable. The County offers no guarantee or warranty of the content included. Any decisions made or made relying on this data will not fall on the County's liability. The information should be utilized as reference material only.









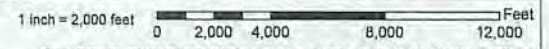
# ERIE COUNTY PUBLIC WATER SYSTEM LEAD ASSESSMENT MAP - SOUTHCENTRAL DISTRICT

"Buildings in Ohio built prior to 1988 or that use plumbing material or solder manufactured before 1988 may have materials with greater than 1% lead and are at a higher risk of contributing lead to the drinking water than materials manufactured after 1988. In addition, buildings built and plumbing materials manufactured after 2014 were required to have less than 0.25% lead by weight and have the lowest risk for contributing lead to the drinking water. It should be noted however that, although prohibited, some use of leaded solder or leaded components may have occurred after the prohibitions became effective."



Developed per MD 512 reference doc, "Lead Service Line and Fixture Mapping Protocol" issue date 10/17.  
 Made by: Erie County Department of Environmental Services 3/21/17.  
 Date: Erie County 31 D.G.S. - Erie County Auditor, 3/15/17.  
 Geospatial System: Projected\_NAD\_1983\_StatePlane\_Ohio\_North\_FIPS\_2401\_Feet

While reviewing this map, red lines represent sections of the Erie County Public Water System that have had potential to contain lead. Given their replacement schedule, these sections have the lowest potential to contain lead. The red line is based on the date of the last water meter replacement. The installation date of the water meter is the best indicator of when the water meter was replaced. In 1988, a lead service line was implemented.



Disclaimer: The County reserves the right to update this map as more information is available. The County offers the guarantee of accuracy of the printed version. Any version created after this date will not be the County's liability. This information shall be used as a reference material only.





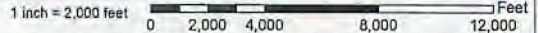
# ERIE COUNTY PUBLIC WATER SYSTEM LEAD ASSESSMENT MAP - NORTHCENTRAL DISTRICT

"Buildings in Ohio built prior to 1988 or that use plumbing material or solder manufactured before 1988 may have materials with greater than 6% lead and are at a higher risk of contributing lead to the drinking water than materials manufactured after 1988. In addition, buildings built and plumbing materials manufactured after 2014 were required to have less than 0.25% lead by weight and have the lowest risk for contributing lead to the drinking water. It should be noted however that, although prohibited, some use of leaded solder or leaded components may have occurred after the prohibitions became effective."



Developed per IIR 512 reference doc: "Lead Service Line and Future Mapping Project" from date 10/17.  
 Made By: Erie County Department of Environmental Services 3717.  
 Date: Erie County D.A.D. S., Erie County Auditor: 10/23/17  
 Courthouse System, Projected: NAD\_1983\_StatePlane\_Ohio\_North\_FIPS\_5101\_Feet

While reviewing the main red lines in certain sections of the Erie County Public Water System, we have been potential to contain lead. On a large percentage of the Erie County, and there is no potential to contain lead. The water treatment plant in the City of Erie was designed from pig iron and the installation date before 1988 and the second category (installed on after 1988 to 1998, a lead service line was implemented).

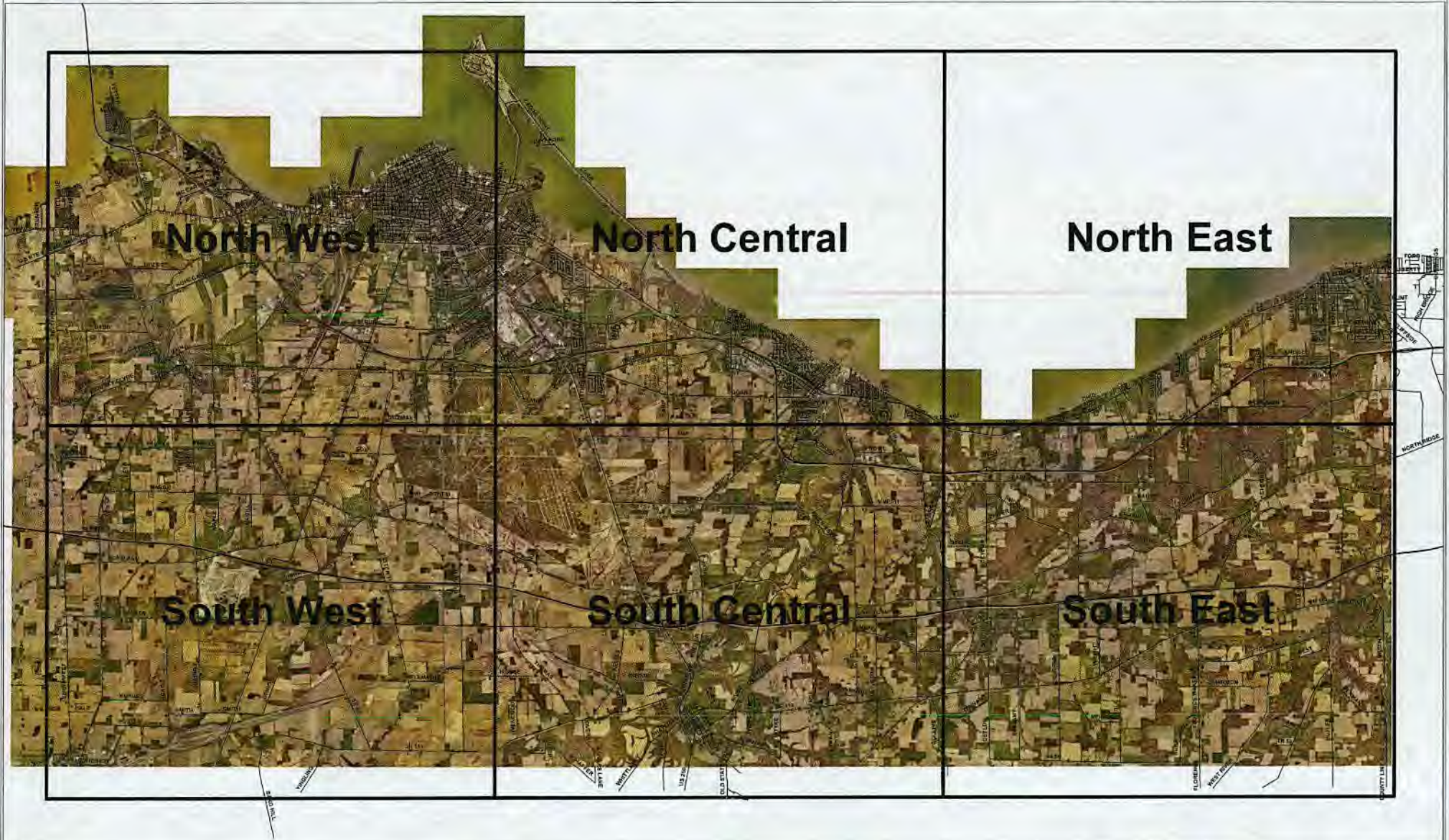


Disclaimer: The County general the data of the public use of water is developed using sources believed to be reliable. The County offers no guaranteed accuracy of the water service. Any detailed water use or other data are not to be used for the County's liability. This statement shall be subject to the County's policy.





# ERIE COUNTY PUBLIC WATER SYSTEM LEAD ASSESSMENT MAP - DISTRICT QUADRANTS



Developed per H2O NYC Reference No. "Lead Service Line and Force Maining Project" dated 3/07/17.  
Made by Erie County Department of Environmental Services 3/7/17  
Data: Erie County D.G.P.S. from County Auditor, USGS  
Coordinate System: Projected\_NAD\_1983\_StatePlane\_Oak\_Ridge\_3105\_2401\_Feet



Disclaimer: The County performed this work in the public "as is" which is intended only for general reference. The County offers no guarantee/warranty of the content accuracy. Any decisions made or made relying on this data will NOT be the County's liability. This information will be utilized as reference material only.