

RE: ALLEN EAST COMMUNITY
CENTER

Report
Drinking Water Program
Allen County
PWS ID: OH0235412

ALLEN EAST MIDDLE SCHOOL

ALLEN EAST LOCAL SCHOOL DISTRICT

HARROD OHIO

U.S. DEPARTMENT OF COMMERCE
E. D. A. PROJECT NO. 06-51-03733

MATERIAL INDEX		DRAWING INDEX		
<p>SYMBOLS</p> <p>ROOM NUMBER SECTION OR DETAIL NUMBER SHEET WHERE DETAIL IS SHOWN DETAIL WALL SECTION CROSS SECTION ENLARGED DETAIL</p>		<p>ARCHITECTURAL</p> <p>A-1 TITLE SHEET A-2 ORIGINAL SURVEY A-3 SITE PLAN AND COURT PLAN A-4 FLOOR PLAN A-5 ROOF PLAN AND DETAILS A-6 ROOM FINISH AND DOOR SCHEDULES A-7 ELEVATIONS A-8 CROSS SECTIONS A-9 WALL SECTIONS A-10 WALL SECTIONS A-11 CASEWORK ELEVATIONS A-12 REFLECTED CEILING PLAN</p>	<p>STRUCTURAL</p> <p>S-1 FOUNDATION PLAN S-2 FOUNDATION SECTIONS AND DETAILS S-3 ROOF FRAMING S-4 SECTIONS AND DETAILS S-5 SECTIONS, COLUMN SCHEDULE & DETAILS</p>	<p>PLUMBING</p> <p>P-1 PLUMBING PLOT PLAN P-2 PLUMBING FLOOR PLAN P-3 PLUMBING DIAGRAMS AND DETAILS</p>
<p>PROJECT SIGN</p>		<p>MECHANICAL</p> <p>M-1 SCHEDULES AND DETAILS M-2 H.V.A.C. FLOOR PLAN</p>	<p>ELECTRICAL</p> <p>E-1 ELECTRICAL SITE PLAN AND SCHEDULES E-2 ELECTRICAL LIGHTING PLAN E-3 ELECTRICAL POWER PLAN</p>	

LEAD SERVICE MAP

Allen East Community Center
9520 Harrod Rd. - Harrod, OH 45850 - (419) 648-9271

PWS: OH0235412 - Allen County
Non-transient, Non-community

1. These plans are for the construction of the 1977 addition to the original Allen East school buildings. Since then, around 2007, the original buildings were demolished and the remaining building was converted into the Allen East Community Center.

2. This building was built in 1977 and used plumbing material or solder manufactured before 1998 and may have materials with greater than 8% lead and are at higher risk of contributing lead to the drinking water than materials manufactured after 1998. In addition, buildings and plumbing materials manufactured after 2014 were required to have less than 0.25% lead by weight and have the lowest risk for contributing lead to the drinking water. It should be noted that, although prohibited, some use of leaded solder or leaded components may have occurred after the prohibitions became effective.

3. The water lines in the building are copper with soldered joints. It is expected that they are all part of the original construction in 1977.

4. The water is supplied to the building from 2 wells through 2" K-copper lines.

RECEIVED

MAR 08 2017

DDAGW - NWDO

7618	STATE OF OHIO COUNTY OF ALLEN CITY OF HARROD
ALLEN EAST MIDDLE SCHOOL ALLEN EAST LOCAL SCHOOL DISTRICT HARROD, OHIO	
DESIGNED BY LESKO ASSOCIATES, INC. ARCHITECTS 1000 EAST 10TH STREET CLEVELAND, OHIO 44115	
DATE: FEB-24, 1977	BY: [Signature] A-1

Allen East Community Center
OH 0235412

OIL TANK DETAIL 4/25

MAR 08 2017

This building was constructed in 1977.

The plumbing material or solder may have materials with greater than 8% lead and are at a higher risk of contributing lead to the drinking water than materials manufactured after 1998.

7618

**ALLEN ALEX RIDDLE SCHOOL,
ALLEN AREA LOCAL SCHOOL DISTRICT
HARRODSBURG, KY 40330**

PLUMBING PLOT PLAN

DESIGNED BY
LEWIS ASSOCIATES INC ARCHITECTS
1022 S 2ND STREET SUITE 200
KNOXVILLE TN 37919

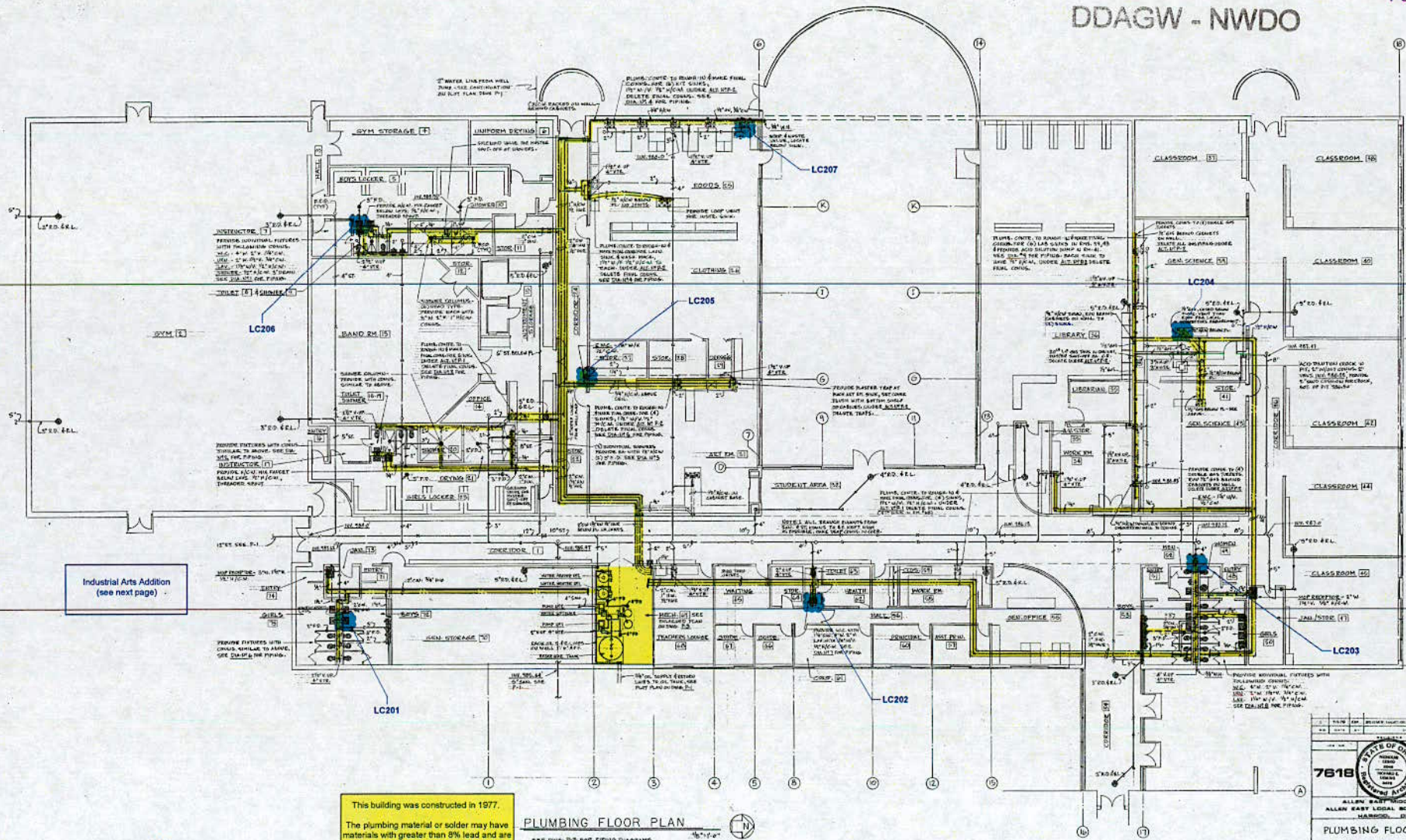
A.G.G. FEB. 28, 1977 3 P-1

RECEIVED

MAR 08 2017

Page 3/5

DDAGW - NWDO



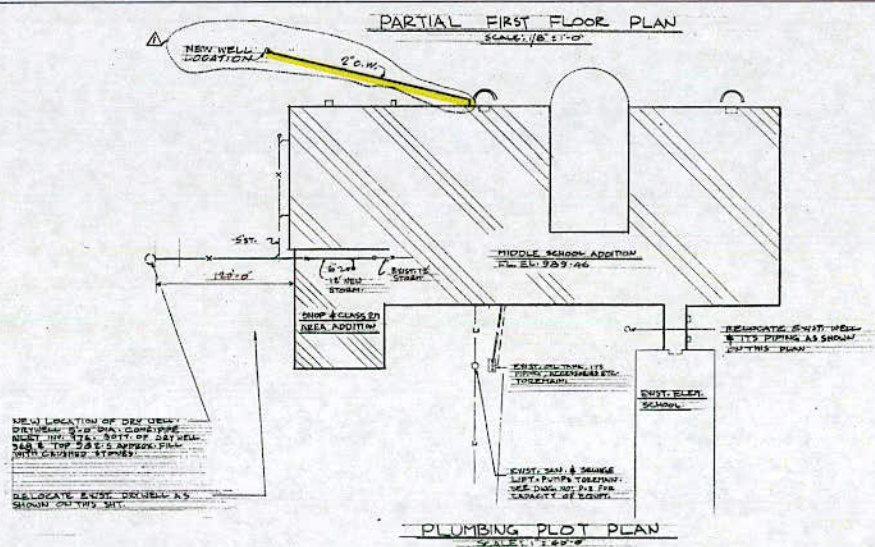
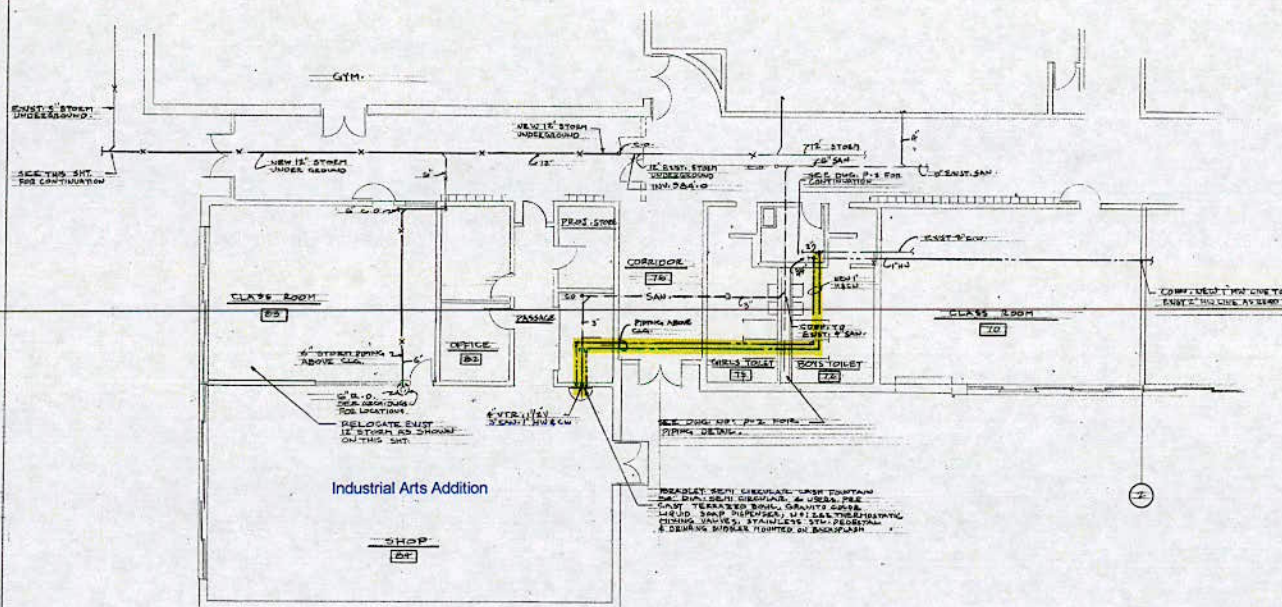
Industrial Arts Addition
(see next page)

This building was constructed in 1977.
The plumbing material or solder may have materials with greater than 8% lead and are at a higher risk of contributing lead to the drinking water than materials manufactured after 1998.

PLUMBING FLOOR PLAN
1/8" = 1'-0"
SEE DWG. P-5 FOR PIPING DIMENSIONS
DETAILS
EXIST. CENTER, WALL, UTILITY & PUMPING SWITCHES
PER (C) SHOWN VALUES AT SHOWN.

Lead & Copper Sample Site

7618		STATE OF OHIO DEPARTMENT OF REVENUE DIVISION OF REVENUE	
ALLEN EAST MIDDLE SCHOOL ALLEN EAST LOCAL SCHOOL DISTRICT - HARRISBURG, OHIO -			
PLUMBING FLOOR PLAN			
DESIGNED BY LEBKO ASSOCIATES INC. ARCHITECTS 1000 WEST 10TH STREET COLUMBUS, OHIO 43260			
DATE A.D. FEB. 28, 1977	BY P-2	CHECKED BY P-2	



RECEIVED

MAR 08 2017

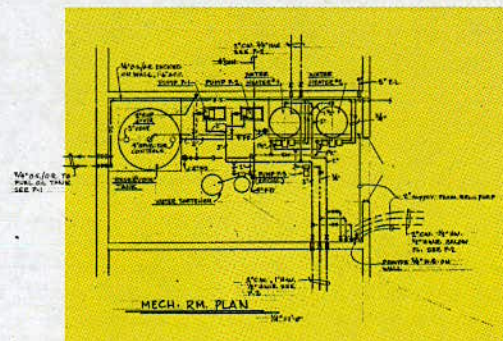
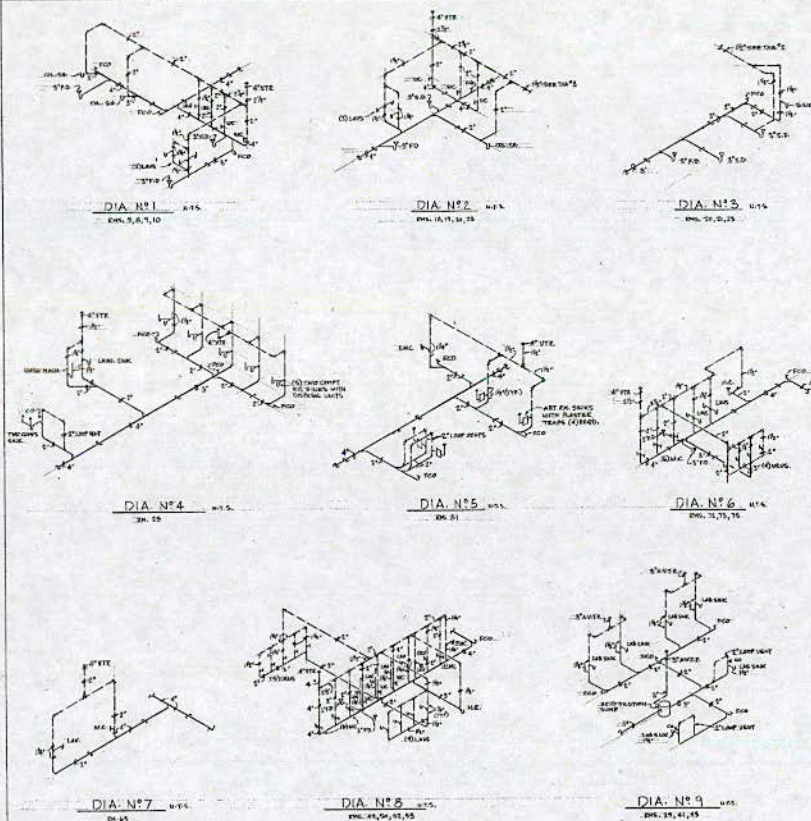
DDAGW - NWDO

This building was constructed in 1977.

The plumbing material or solder may have materials with greater than 8% lead and are at a higher risk of contributing lead to the drinking water than materials manufactured after 1998.

REVISION	BY	DESCRIPTION
NO.	DATE	REVISION WELL LOCATION
1	APRIL 21, 1977	
2	APRIL 21, 1977	
3	APRIL 21, 1977	
4	APRIL 21, 1977	
5	APRIL 21, 1977	
6	APRIL 21, 1977	
7	APRIL 21, 1977	
8	APRIL 21, 1977	
9	APRIL 21, 1977	
10	APRIL 21, 1977	
11	APRIL 21, 1977	
12	APRIL 21, 1977	
13	APRIL 21, 1977	
14	APRIL 21, 1977	
15	APRIL 21, 1977	
16	APRIL 21, 1977	
17	APRIL 21, 1977	
18	APRIL 21, 1977	
19	APRIL 21, 1977	
20	APRIL 21, 1977	
21	APRIL 21, 1977	
22	APRIL 21, 1977	
23	APRIL 21, 1977	
24	APRIL 21, 1977	
25	APRIL 21, 1977	
26	APRIL 21, 1977	
27	APRIL 21, 1977	
28	APRIL 21, 1977	
29	APRIL 21, 1977	
30	APRIL 21, 1977	
31	APRIL 21, 1977	
32	APRIL 21, 1977	
33	APRIL 21, 1977	
34	APRIL 21, 1977	
35	APRIL 21, 1977	
36	APRIL 21, 1977	
37	APRIL 21, 1977	
38	APRIL 21, 1977	
39	APRIL 21, 1977	
40	APRIL 21, 1977	
41	APRIL 21, 1977	
42	APRIL 21, 1977	
43	APRIL 21, 1977	
44	APRIL 21, 1977	
45	APRIL 21, 1977	
46	APRIL 21, 1977	
47	APRIL 21, 1977	
48	APRIL 21, 1977	
49	APRIL 21, 1977	
50	APRIL 21, 1977	
51	APRIL 21, 1977	
52	APRIL 21, 1977	
53	APRIL 21, 1977	
54	APRIL 21, 1977	
55	APRIL 21, 1977	
56	APRIL 21, 1977	
57	APRIL 21, 1977	
58	APRIL 21, 1977	
59	APRIL 21, 1977	
60	APRIL 21, 1977	
61	APRIL 21, 1977	
62	APRIL 21, 1977	
63	APRIL 21, 1977	
64	APRIL 21, 1977	
65	APRIL 21, 1977	
66	APRIL 21, 1977	
67	APRIL 21, 1977	
68	APRIL 21, 1977	
69	APRIL 21, 1977	
70	APRIL 21, 1977	
71	APRIL 21, 1977	
72	APRIL 21, 1977	
73	APRIL 21, 1977	
74	APRIL 21, 1977	
75	APRIL 21, 1977	
76	APRIL 21, 1977	
77	APRIL 21, 1977	
78	APRIL 21, 1977	
79	APRIL 21, 1977	
80	APRIL 21, 1977	
81	APRIL 21, 1977	
82	APRIL 21, 1977	
83	APRIL 21, 1977	
84	APRIL 21, 1977	
85	APRIL 21, 1977	
86	APRIL 21, 1977	
87	APRIL 21, 1977	
88	APRIL 21, 1977	
89	APRIL 21, 1977	
90	APRIL 21, 1977	
91	APRIL 21, 1977	
92	APRIL 21, 1977	
93	APRIL 21, 1977	
94	APRIL 21, 1977	
95	APRIL 21, 1977	
96	APRIL 21, 1977	
97	APRIL 21, 1977	
98	APRIL 21, 1977	
99	APRIL 21, 1977	
100	APRIL 21, 1977	

SHEET NO.
SUPP.
P. 4



RECEIVED

MAR 08 2017

DURHAM, N.C.

This building was constructed in 1977.
The plumbing material or solder may have materials with greater than 8% lead and are at a higher risk of contributing lead to the drinking water than materials manufactured after 1998.

7518	REV	REVISION (NUMBER OF REV., DATE, AND BY WHOM)
7518	1	1
7518		
ALLAN EAST LOCAL SCHOOL DISTRICT HARRISBURG, OHIO		
PLUMBING DIAGRAMS		
DRAWN BY: LEUNG ASSOCIATES INC. ARCHITECTS 1000 EAST 10TH STREET A.D.G. FEB. 12, 1977		
P.3		5