

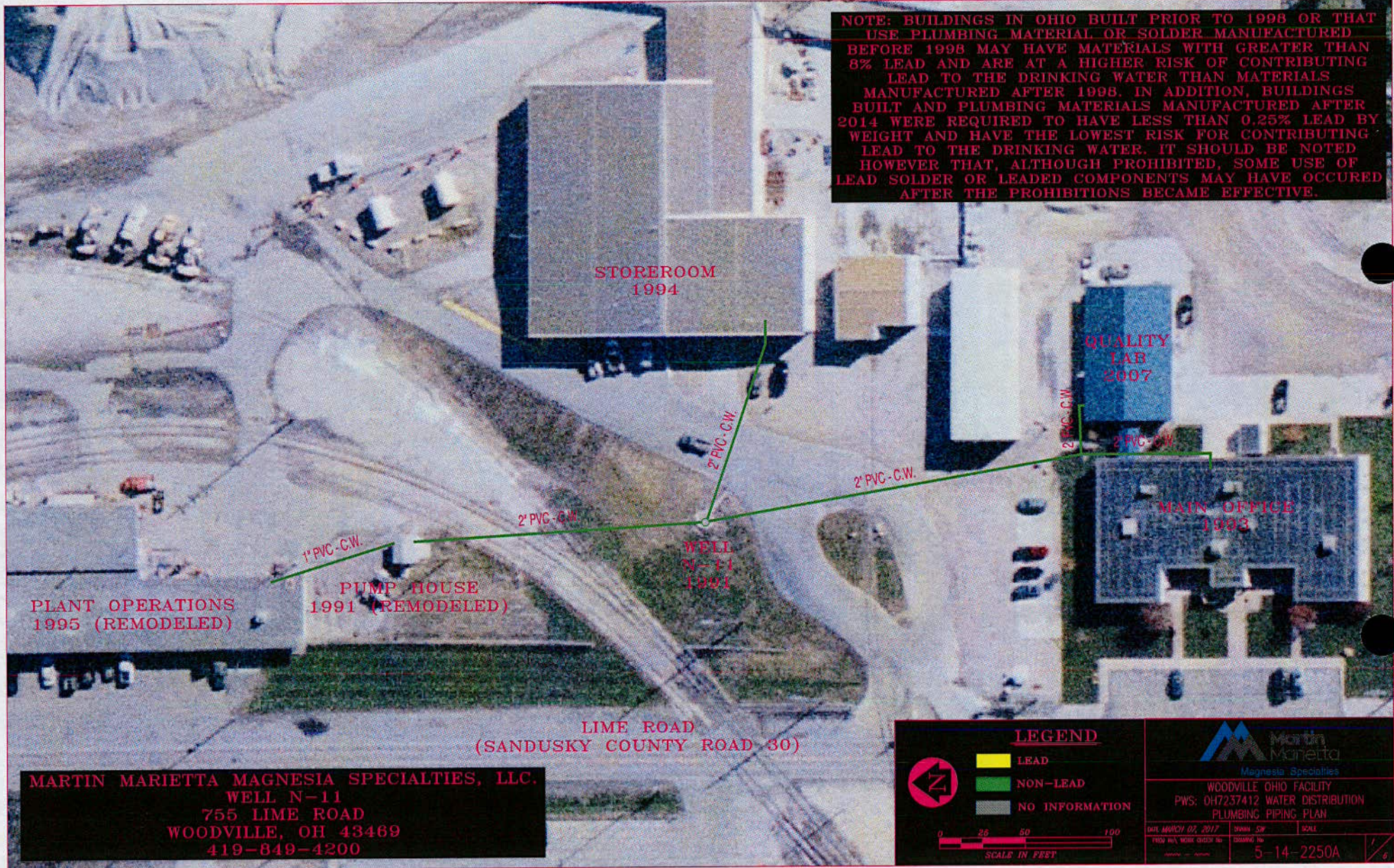
RE: MARTIN MARTIETTA-WOODVILLE
Report
Drinking Water Program
Sandusky County
PWS ID: OH7237412

RECEIVED

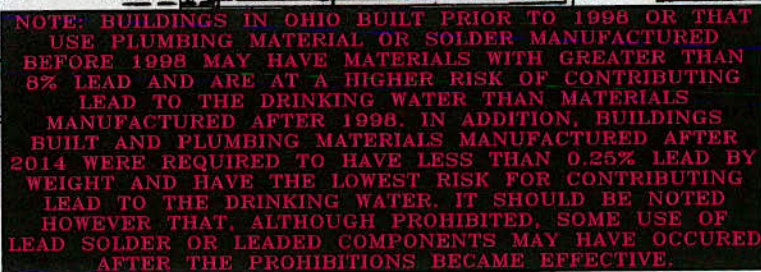
MAR 08 2017

DDAGW - NWDO

NOTE: BUILDINGS IN OHIO BUILT PRIOR TO 1998 OR THAT USE PLUMBING MATERIAL OR SOLDER MANUFACTURED BEFORE 1998 MAY HAVE MATERIALS WITH GREATER THAN 8% LEAD AND ARE AT A HIGHER RISK OF CONTRIBUTING LEAD TO THE DRINKING WATER THAN MATERIALS MANUFACTURED AFTER 1998. IN ADDITION, BUILDINGS BUILT AND PLUMBING MATERIALS MANUFACTURED AFTER 2014 WERE REQUIRED TO HAVE LESS THAN 0.25% LEAD BY WEIGHT AND HAVE THE LOWEST RISK FOR CONTRIBUTING LEAD TO THE DRINKING WATER. IT SHOULD BE NOTED HOWEVER THAT, ALTHOUGH PROHIBITED, SOME USE OF LEAD SOLDER OR LEADED COMPONENTS MAY HAVE OCCURRED AFTER THE PROHIBITIONS BECAME EFFECTIVE.

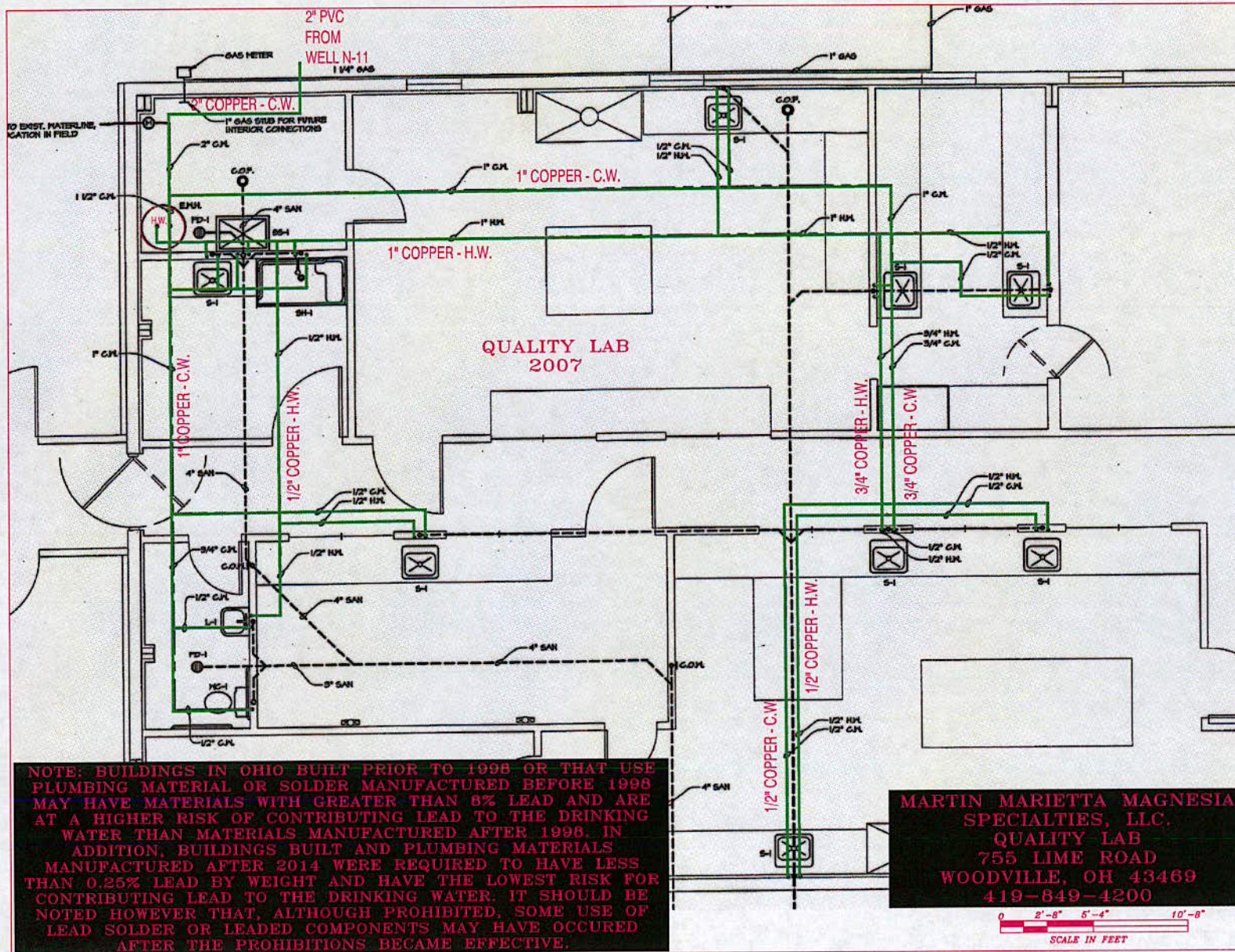


DDAGW - NWDO



MARTIN MARIETTA MAGNESIA SPECIALTIES, LLC.
MAIN OFFICE
755 LIME ROAD
WOODVILLE, OH 43469
419-849-4200





RECEIVED
MAR 08 2017
DDAGW - NWDO

LEGEND

- LEAD
- NON-LEAD
- NO INFORMATION



WOODVILLE OHIO FACILITY
QUALITY LAB BUILDING - 1 FLOOR
PLUMBING PIPING PLAN

DATE: MARCH 07, 2017	DRAWN: SM	SCALE: 3/16" = 1'-0"
PROJ. NO.: WORK ORDER NO.	DRAWING NO.	
REVISED: -	5-14-2250C	3/6

MARTIN MARIETTA MAGNESIA
SPECIALTIES, LLC.
QUALITY LAB
755 LIME ROAD
WOODVILLE, OH 43469
419-849-4200



NOTE: BUILDINGS IN OHIO BUILT PRIOR TO 1998 OR THAT USE PLUMBING MATERIAL OR SOLDER MANUFACTURED BEFORE 1998 MAY HAVE MATERIALS WITH GREATER THAN 8% LEAD AND ARE AT A HIGHER RISK OF CONTRIBUTING LEAD TO THE DRINKING WATER THAN MATERIALS MANUFACTURED AFTER 1998. IN ADDITION, BUILDINGS BUILT AND PLUMBING MATERIALS MANUFACTURED AFTER 2014 WERE REQUIRED TO HAVE LESS THAN 0.25% LEAD BY WEIGHT AND HAVE THE LOWEST RISK FOR CONTRIBUTING LEAD TO THE DRINKING WATER. IT SHOULD BE NOTED HOWEVER THAT, ALTHOUGH PROHIBITED, SOME USE OF LEAD SOLDER OR LEADED COMPONENTS MAY HAVE OCCURED AFTER THE PROHIBITIONS BECAME EFFECTIVE.

STOREROOM
1994




NOTE: BUILDINGS IN OHIO BUILT PRIOR TO 1998 OR THAT USE PLUMBING MATERIAL OR SOLDER MANUFACTURED BEFORE 1998 MAY HAVE MATERIALS WITH GREATER THAN 8% LEAD AND ARE AT A HIGHER RISK OF CONTRIBUTING LEAD TO THE DRINKING WATER THAN MATERIALS MANUFACTURED AFTER 1998. IN ADDITION, BUILDINGS BUILT AND PLUMBING MATERIALS MANUFACTURED AFTER 2014 WERE REQUIRED TO HAVE LESS THAN 0.25% LEAD BY WEIGHT AND HAVE THE LOWEST RISK FOR CONTRIBUTING LEAD TO THE DRINKING WATER. IT SHOULD BE NOTED HOWEVER THAT, ALTHOUGH PROHIBITED, SOME USE OF LEAD SOLDER OR LEADED COMPONENTS MAY HAVE OCCURRED AFTER THE PROHIBITIONS BECAME EFFECTIVE.

MAR 08 2017

DDAGW - NWDO

LEGEND



 **LEAD**
 **NON-LEAD**
 **NO INFORMATION**



WOODVILLE OHIO FACILITY
STOREROOM BUILDING - 1 FLOOR
PLUMBING PIPING PLAN

DATE <u>MARCH 07, 2017</u>	DRAWN <u>SW</u>	SCALE <u>3/16" = 1'-0"</u>
PROJECT NO. <u>WORK ORDER NO</u>	DRAWING NO.	
	<u>5-14-2250D</u>	

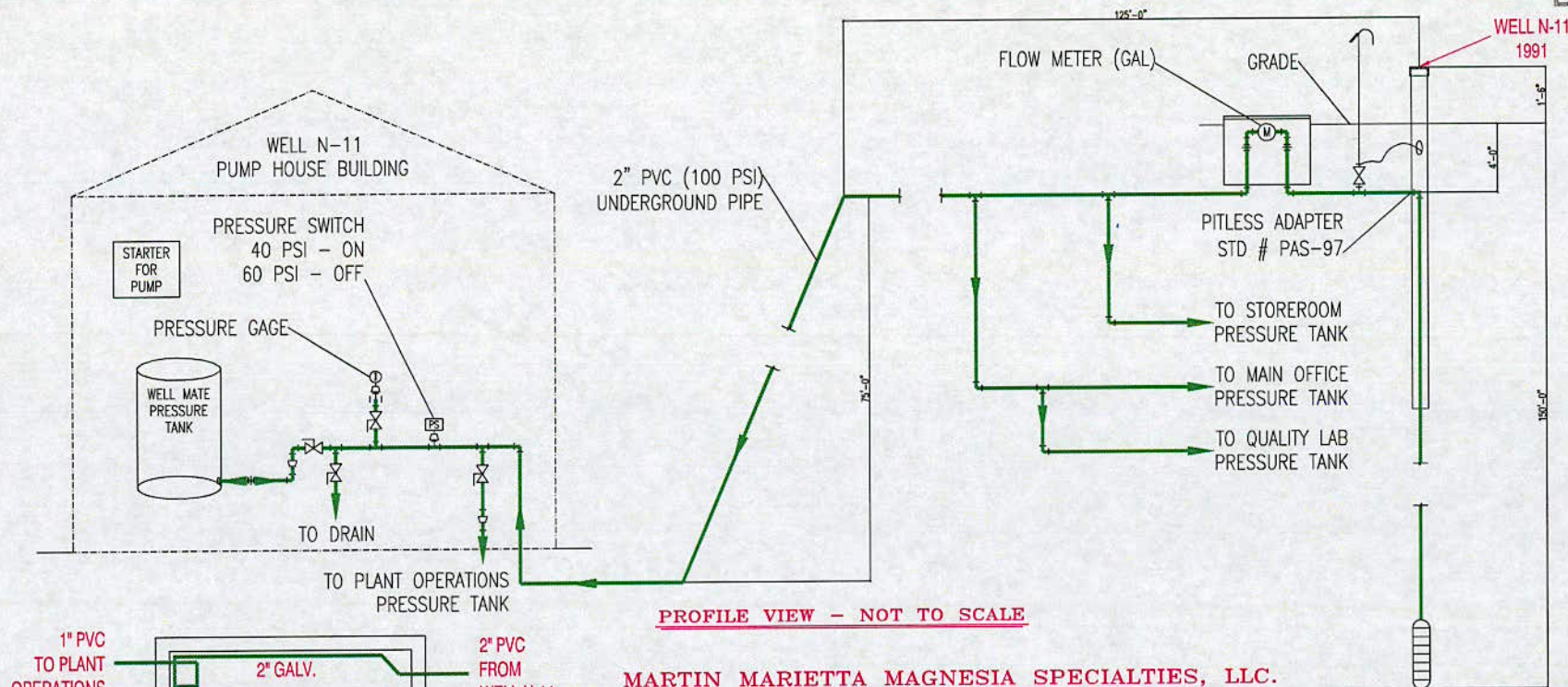
STOPEBOOK



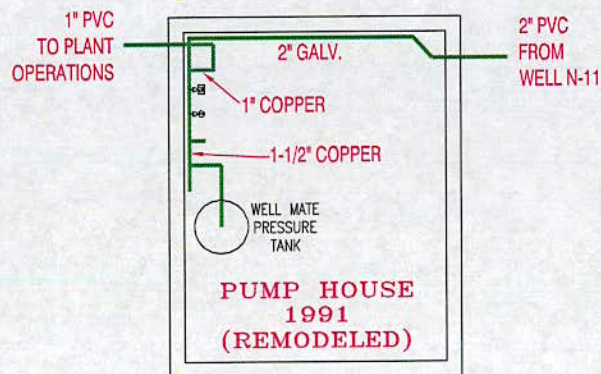
RECEIVED

MAR 08 2017

DDAGW - NWDO



PROFILE VIEW - NOT TO SCALE



PLAN VIEW - SCALE: 3/16" = 1'-0"

MARTIN MARIETTA MAGNESIA SPECIALTIES, LLC.
PUMP HOUSE
755 LIME ROAD
WOODVILLE, OH 43469
419-849-4200

NOTE: BUILDINGS IN OHIO BUILT PRIOR TO 1998 OR THAT USE PLUMBING MATERIAL OR SOLDER MANUFACTURED BEFORE 1998 MAY HAVE MATERIALS WITH GREATER THAN 8% LEAD AND ARE AT A HIGHER RISK OF CONTRIBUTING LEAD TO THE DRINKING WATER THAN MATERIALS MANUFACTURED AFTER 1998. IN ADDITION, BUILDINGS BUILT AND PLUMBING MATERIALS MANUFACTURED AFTER 2014 WERE REQUIRED TO HAVE LESS THAN 0.25% LEAD BY WEIGHT AND HAVE THE LOWEST RISK FOR CONTRIBUTING LEAD TO THE DRINKING WATER. IT SHOULD BE NOTED HOWEVER THAT, ALTHOUGH PROHIBITED, SOME USE OF LEAD SOLDER OR LEADED COMPONENTS MAY HAVE OCCURRED AFTER THE PROHIBITIONS BECAME EFFECTIVE.

0 2'-0" 5'-0" 10'-0"
SCALE IN FEET

LEGEND



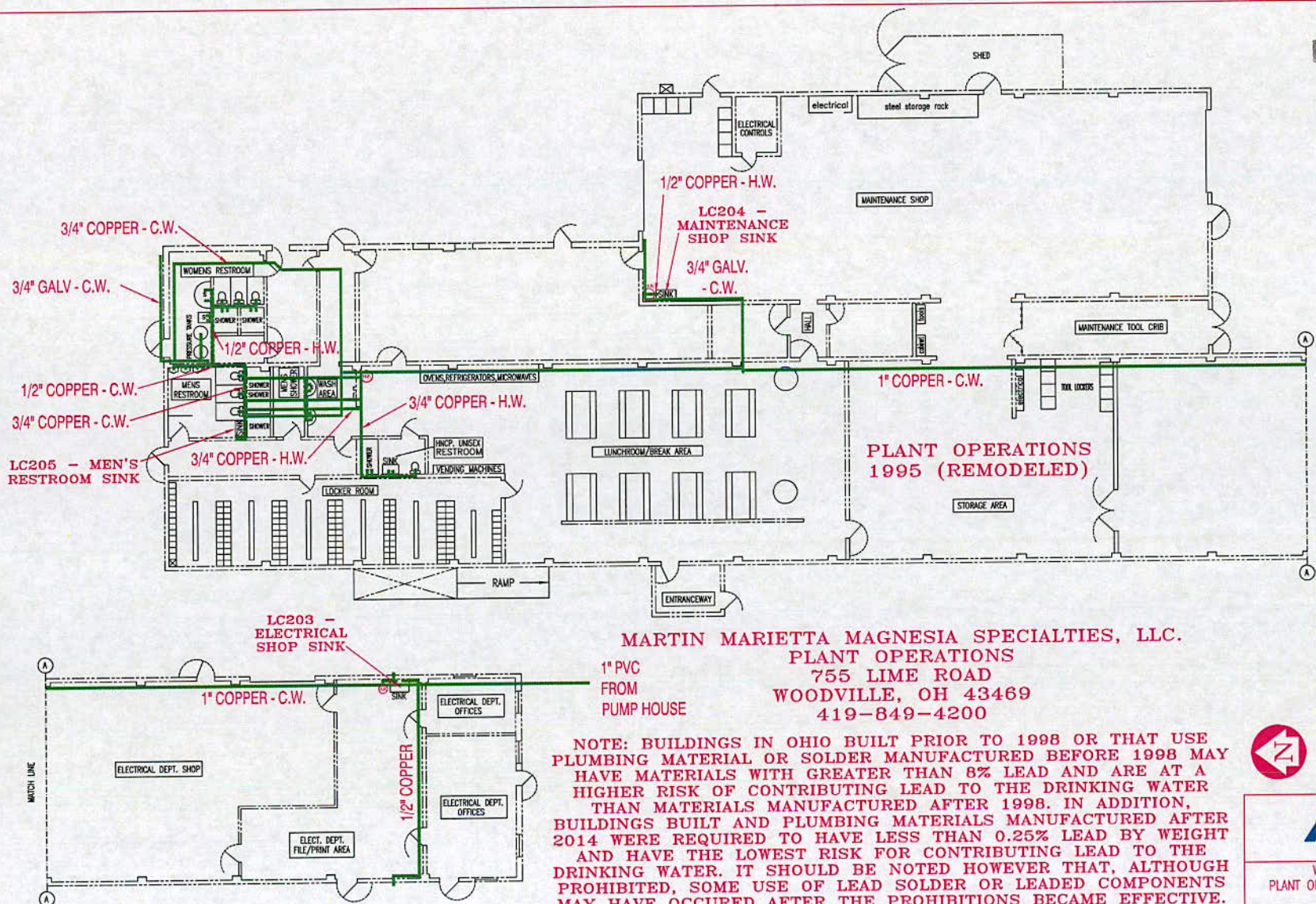
WOODVILLE OHIO FACILITY
PUMP HOUSE BUILDING - 1 FLOOR
PLUMBING PIPING PLAN

DATE: MARCH 07, 2017	DRAWN: SW	SCALE: 3/16" = 1'-0"
PROJ. NO. / WORK ORDER NO.	DRAWING NO.	
5-14-2250E		5/6

RECEIVED

MAR 08 2017

DDAGW - NWDO



MARTIN MARIETTA MAGNESIA SPECIALTIES, LLC.
PLANT OPERATIONS
 755 LIME ROAD
 WOODVILLE, OH 43469
 419-849-4200

NOTE: BUILDINGS IN OHIO BUILT PRIOR TO 1998 OR THAT USE PLUMBING MATERIAL OR SOLDER MANUFACTURED BEFORE 1998 MAY HAVE MATERIALS WITH GREATER THAN 8% LEAD AND ARE AT A HIGHER RISK OF CONTRIBUTING LEAD TO THE DRINKING WATER THAN MATERIALS MANUFACTURED AFTER 1998. IN ADDITION, BUILDINGS BUILT AND PLUMBING MATERIALS MANUFACTURED AFTER 2014 WERE REQUIRED TO HAVE LESS THAN 0.25% LEAD BY WEIGHT AND HAVE THE LOWEST RISK FOR CONTRIBUTING LEAD TO THE DRINKING WATER. IT SHOULD BE NOTED HOWEVER THAT, ALTHOUGH PROHIBITED, SOME USE OF LEAD SOLDER OR LEADED COMPONENTS MAY HAVE OCCURED AFTER THE PROHIBITIONS BECAME EFFECTIVE.

0 8 16 32
 SCALE IN FEET

LEGEND



WOODVILLE OHIO FACILITY
 PLANT OPERATIONS BUILDING - 1 FLOOR
 PLUMBING PIPING PLAN

DATE: MARCH 07, 2017	DRAWN: SWP	SCALE: 1/16" = 1'-0"
PROJ. NO./WORK ORDER NO.	DRAWING NO.	
	5-14-2250F	6/6