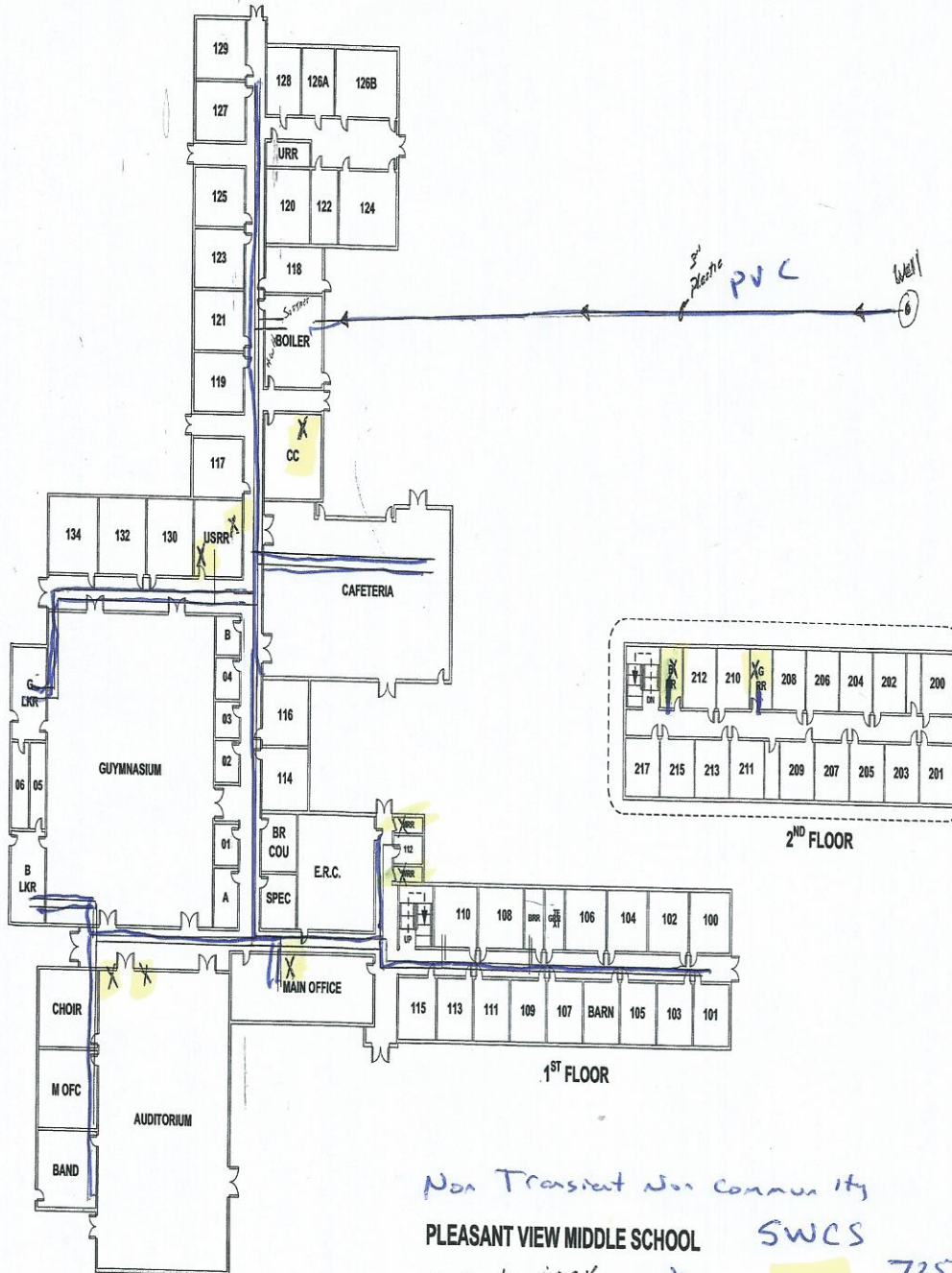


Buildings in Ohio built prior to 1998 or that use plumbing material or solder manufactured before 1998 may have materials with greater than 8% lead and are at a higher risk of contributing lead to the drinking water than materials manufactured after 1998. In addition, buildings built and plumbing materials manufactured after 2014 were required to have less than 0.25% lead by weight and have the lowest risk for contributing lead to the drinking water. It should be noted however that, although prohibited, some use of leaded solder or leaded components may have occurred after the prohibitions became effective.



Non Transient Non Community

PLEASANT VIEW MIDDLE SCHOOL SWCS

X Sample Sites X yellow
Lead + Copper

PWS OH2534112

Building constructed 1950's

Well PVC

Distribution - Copper

WTP - Copper + Ductal, PVC

Throughout the building

7255 Kropp Rd
Grove City, OH 43123

Contact
Mark Waller
614-801-3000

ORC
Steve Sherrill
614-940-0721