

Village of Thurston

2215 Main Street • PO Box 188
Thurston, Ohio 43157
(740) 862-6003 • (740) 862-6423 FAX

Mary Boring
Mayor

Aaron Reedy
Clerk-Treasurer

March 3, 2017

Mr. Mike Santone
Ohio EPA
Central District Office – DDAGW
P.O. Box 1049
Columbus, OH 43216-1049

Re: Village of Thurston
Lead Service Line and Fixture Mapping Project

Dear Mr. Santone:

Attached please find the following mapping information related to the January 17, 2017 request for Lead Service Line and Fixture Mapping from the Village of Thurston:

1. Water Main Materials Mapping (set of three maps)
2. Service Line Material Mapping (set of three maps)
3. Building Piping/Fixture Material Mapping (set of three maps)

In developing this mapping the Village utilized the following information:

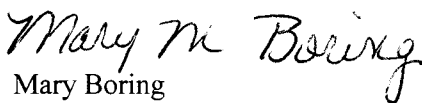
1. System drawings from the 1974 original system construction and subsequent extension projects.
2. Interviews with personnel involved in the original system construction and in maintenance activities since 1974.
3. Direct observation during maintenance activities by the system operator.
4. System maintenance records.
5. Construction dates for structures served by the distribution system.

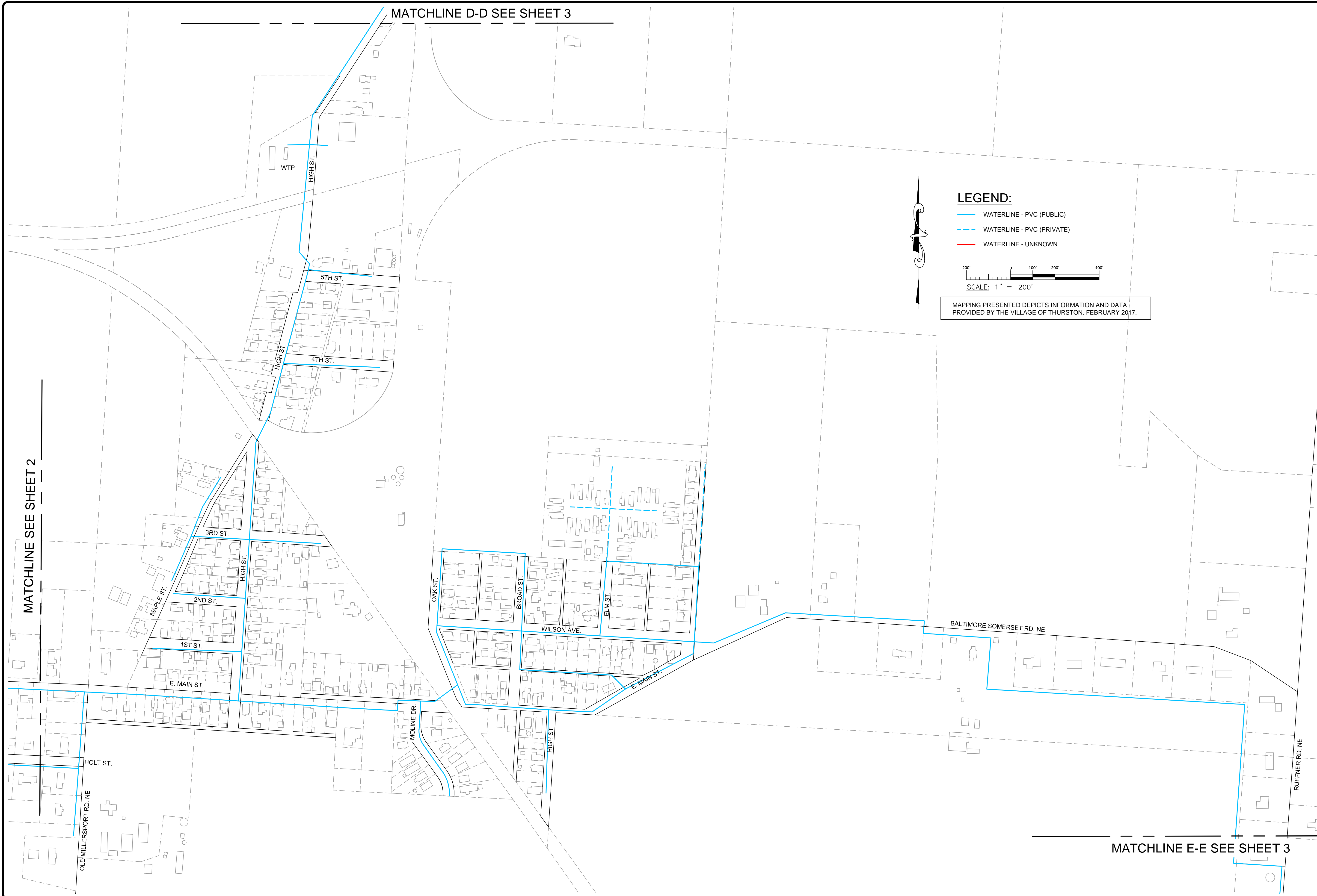
In addition to the above information we have also enclosed for reference a copy of the Village of Thurston Lead and Copper Sample Monitoring Point ID's. This information was previously transmitted as an MS-Excel format file to Michael Deal via email to Michael.deal@epa.ohio.gov.

We have also enclosed with this transmittal a completed "Verification Form for Community Public Water Systems Claiming No Lead Service Lines".

Please review the enclosed information and notify our office if further information is required.

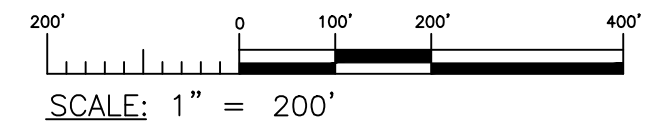
Sincerely;


Mary Boring
Mayor



LEGEND:

- WATERLINE - PVC (PUBLIC)
- - - WATERLINE - PVC (PRIVATE)
- WATERLINE - UNKNOWN



SCALE: 1" = 200'

MAPPING PRESENTED DEPICTS INFORMATION AND DATA PROVIDED BY THE VILLAGE OF THURSTON, FEBRUARY 2017.

ENGINEERS

148 N HIGH STREET GAHANNA, OHIO 43230
PHONE: 614-471-7210 FAX: 614-471-7220
WWW.GGCENGINEERS.COM

--

REVISIONS

VILLAGE OF THURSTON
LEAD SERVICE LINE & FIXTURE
MAPPING PROJECT

CLIENT: VILLAGE OF THURSTON
ADDRESS: 2215 MAIN STREET NE, THURSTON, OHIO 43157
LOCATION: FAIRFIELD COUNTY, OHIO

SCALE:			
AS NOTED			
DESIGN BY: —	DWN BY: AGD		
CHK'D BY: —	APPV'D BY: —		
COPYRIGHT © 2017 GGC ENGINEERS, INC.			

WATER MAIN MATERIALS

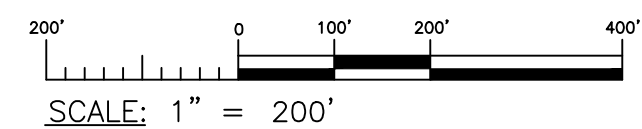
SHT#
1 OF 3

PROJ# 17200 2/28/2017



LEGEND:

- WATERLINE - PVC (PUBLIC)
- - - WATERLINE - PVC (PRIVATE)
- WATERLINE - UNKNOWN



MAPPING PRESENTED DEPICTS INFORMATION AND DATA PROVIDED BY THE VILLAGE OF THURSTON. FEBRUARY 2017.

GGC
E N G I N E E R S
148 N HIGH STREET GAHANNA, OHIO 43230
PHONE: 614-471-7310 FAX: 614-471-7320
WWW.GGCENGINEERS.COM

VILLAGE OF THURSTON
LEAD SERVICE LINE & FIXTURE
MAPPING PROJECT

CLIENT: VILLAGE OF THURSTON
ADDRESS: 2215 MAIN STREET NE, THURSTON, OHIO 43157
LOCATION: FAIRFIELD COUNTY, OHIO

SCALE: AS NOTED		
DESIGN BY: —	DWN BY: AGD	
CHK'D BY: —	APPV'D BY: —	
COPYRIGHT © 2017 GGC ENGINEERS, INC.		

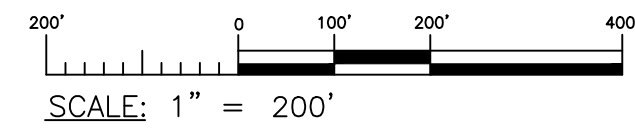
WATER MAIN
MATERIALS

SHT#	2 OF 3
PROJ#	17200 2/28/2017



LEGEND:

- WATERLINE - PVC (PUBLIC)
- - - WATERLINE - PVC (PRIVATE)
- WATERLINE - UNKNOWN



MAPPING PRESENTED DEPICTS INFORMATION AND DATA PROVIDED BY THE VILLAGE OF THURSTON. FEBRUARY 2017.

GGC ENGINEERS
 148 N HIGH STREET GAHANNA, OHIO 43230
 PHONE: 614-471-7310 FAX: 614-471-7320
 WWW.GGCENGINEERS.COM



REVISIONS

VILLAGE OF THURSTON
 LEAD SERVICE LINE & FIXTURE
 MAPPING PROJECT

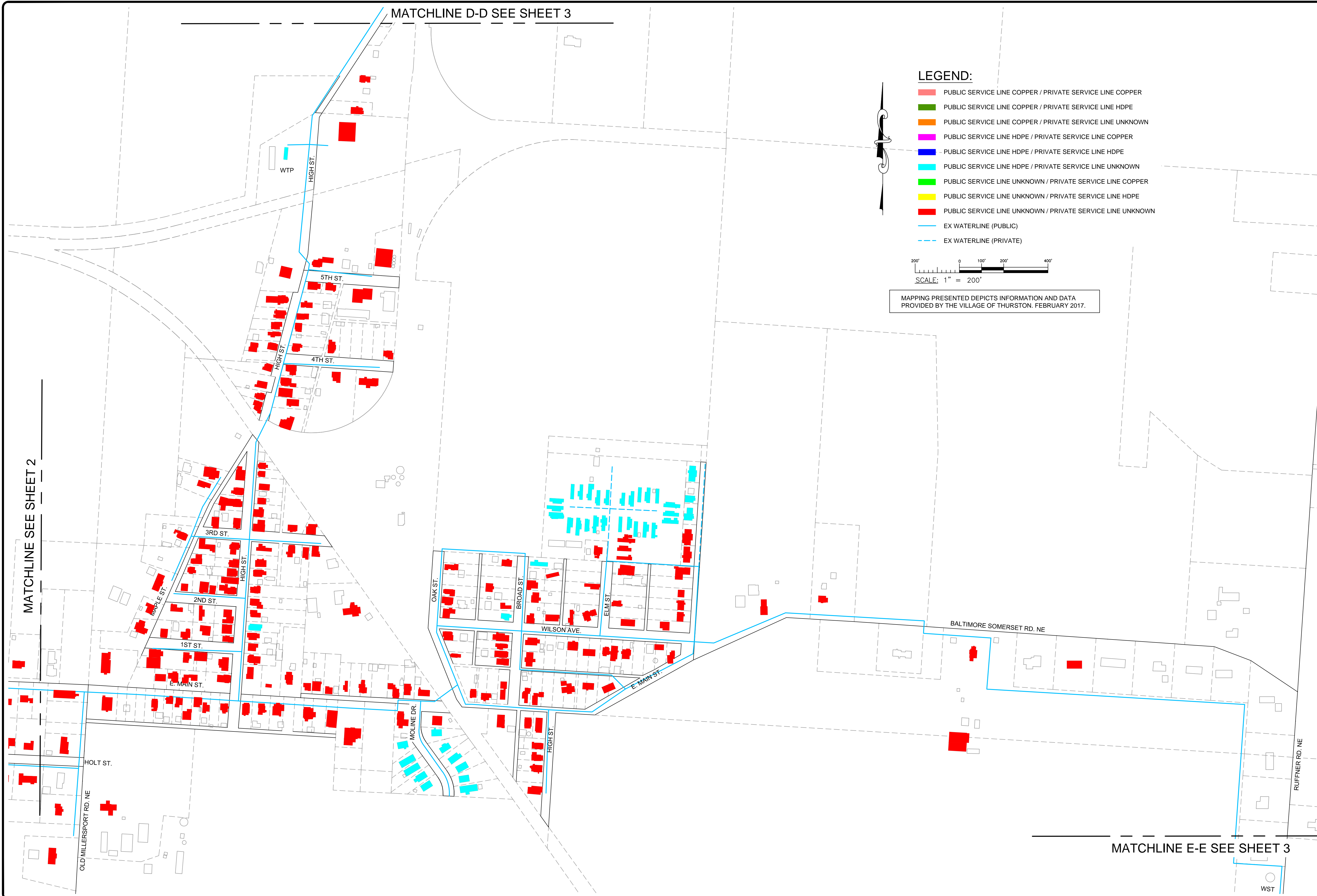
CLIENT: VILLAGE OF THURSTON
 ADDRESS: 2215 MAIN STREET NE, THURSTON, OHIO 43157
 LOCATION: FAIRFIELD COUNTY, OHIO

SCALE: AS NOTED			
DESIGN BY:	—	DWN BY:	AGD
CHK'D BY:	—	APPV'D BY:	—
COPYRIGHT © 2017 GGC ENGINEERS, INC.			

WATER MAIN MATERIALS

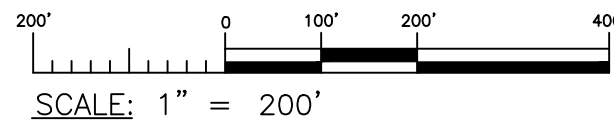
SHT#
 3 OF 3

PROJ# 17200 2/28/2017



LEGEND:

- PUBLIC SERVICE LINE COPPER / PRIVATE SERVICE LINE COPPER
- PUBLIC SERVICE LINE COPPER / PRIVATE SERVICE LINE HDPE
- PUBLIC SERVICE LINE COPPER / PRIVATE SERVICE LINE UNKNOWN
- PUBLIC SERVICE LINE HDPE / PRIVATE SERVICE LINE COPPER
- PUBLIC SERVICE LINE HDPE / PRIVATE SERVICE LINE HDPE
- PUBLIC SERVICE LINE HDPE / PRIVATE SERVICE LINE UNKNOWN
- PUBLIC SERVICE LINE UNKNOWN / PRIVATE SERVICE LINE COPPER
- PUBLIC SERVICE LINE UNKNOWN / PRIVATE SERVICE LINE HDPE
- PUBLIC SERVICE LINE UNKNOWN / PRIVATE SERVICE LINE UNKNOWN
- EX WATERLINE (PUBLIC)
- EX WATERLINE (PRIVATE)



MAPPING PRESENTED DEPICTS INFORMATION AND DATA PROVIDED BY THE VILLAGE OF THURSTON, FEBRUARY 2017.

REVISIONS

VILLAGE OF THURSTON
LEAD SERVICE LINE & FIXTURE
MAPPING PROJECT

CLIENT: VILLAGE OF THURSTON
ADDRESS: 2215 MAIN STREET NE, THURSTON, OHIO 43157
LOCATION: FAIRFIELD COUNTY, OHIO

SCALE: AS NOTED			
DESIGN BY:	—	DWN BY:	AGD
CHK'D BY:	—	APPV'D BY:	—
COPYRIGHT © 2017 GGC ENGINEERS, INC.			

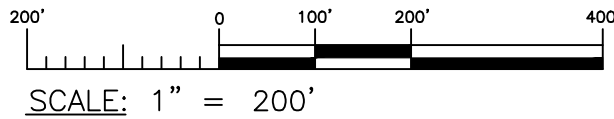
SERVICE LINE
MATERIALS

SHT#	1 OF 3
PROJ#	17200 2/28/2017



LEGEND:

- PUBLIC SERVICE LINE COPPER / PRIVATE SERVICE LINE COPPER
- PUBLIC SERVICE LINE COPPER / PRIVATE SERVICE LINE HDPE
- PUBLIC SERVICE LINE COPPER / PRIVATE SERVICE LINE UNKNOWN
- PUBLIC SERVICE LINE HDPE / PRIVATE SERVICE LINE COPPER
- PUBLIC SERVICE LINE HDPE / PRIVATE SERVICE LINE HDPE
- PUBLIC SERVICE LINE HDPE / PRIVATE SERVICE LINE UNKNOWN
- PUBLIC SERVICE LINE UNKNOWN / PRIVATE SERVICE LINE COPPER
- PUBLIC SERVICE LINE UNKNOWN / PRIVATE SERVICE LINE HDPE
- PUBLIC SERVICE LINE UNKNOWN / PRIVATE SERVICE LINE UNKNOWN
- EX WATERLINE (PUBLIC)
- EX WATERLINE (PRIVATE)



MAPPING PRESENTED DEPICTS INFORMATION AND DATA PROVIDED BY THE VILLAGE OF THURSTON. FEBRUARY 2017.



148 N HIGH STREET GAHANNA, OHIO 43230
PHONE: 614-471-7310 FAX: 614-471-7320
WWW.GGCENGINEERS.COM

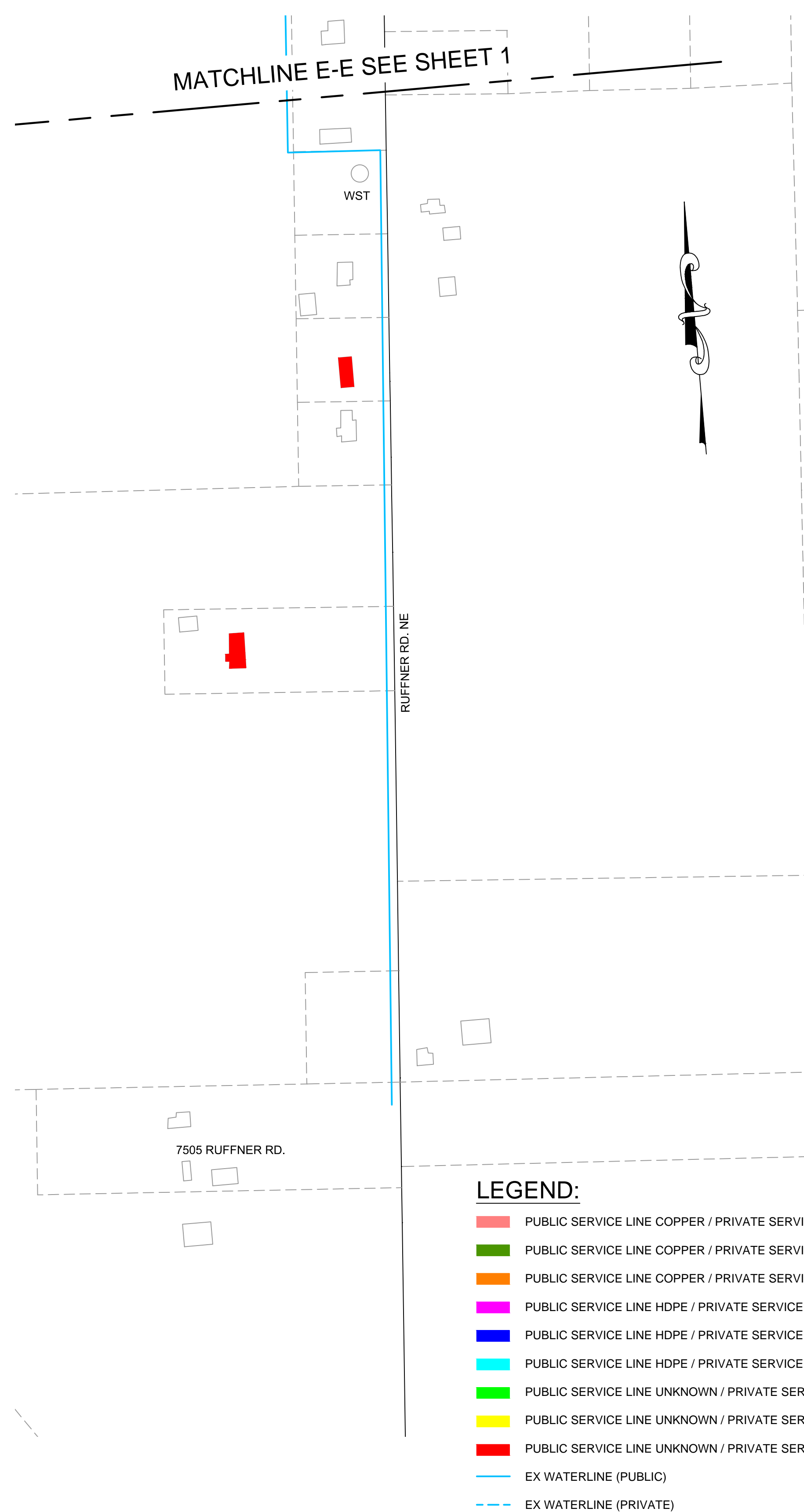
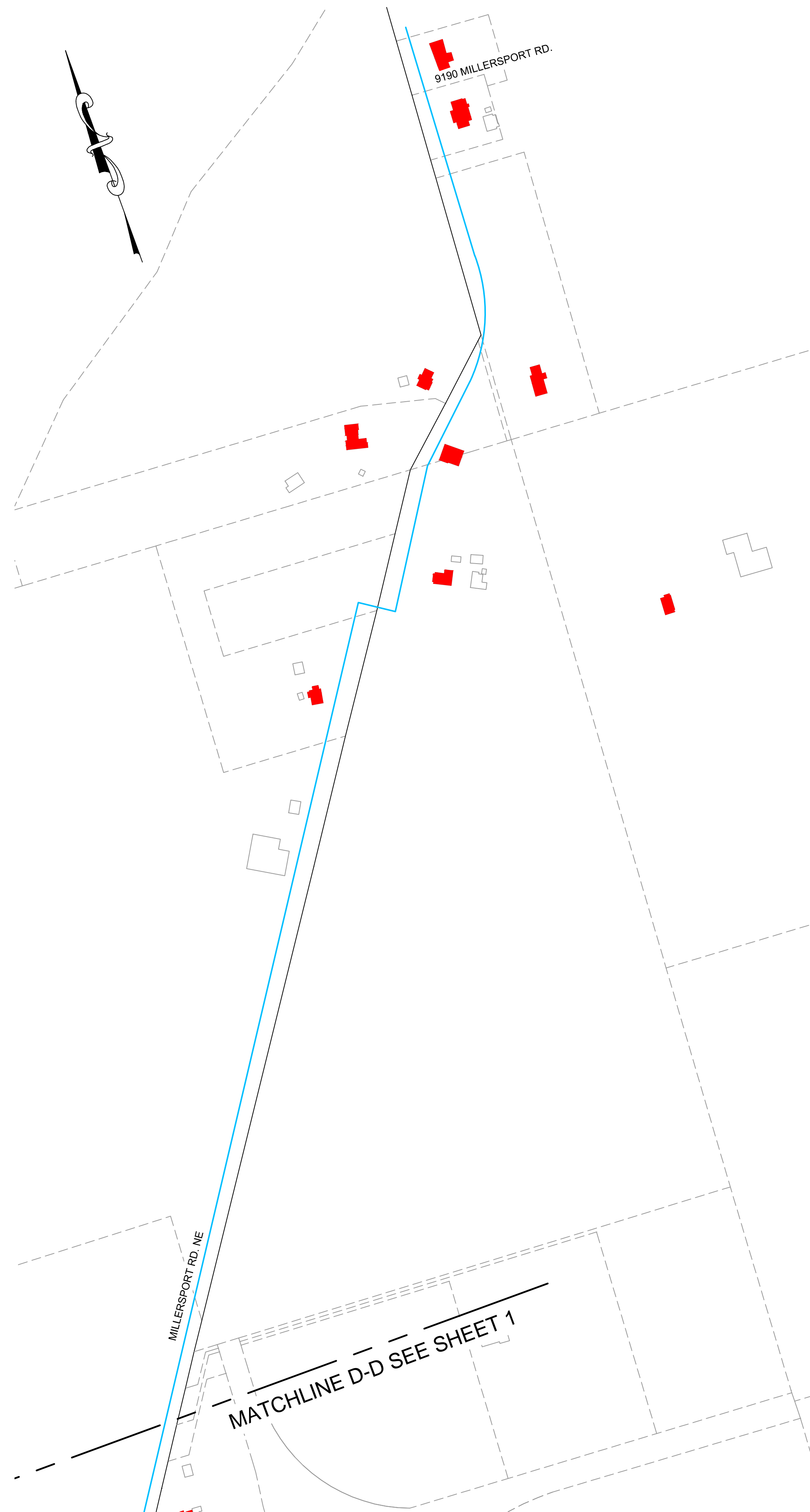
VILLAGE OF THURSTON
LEAD SERVICE LINE & FIXTURE
MAPPING PROJECT

CLIENT: VILLAGE OF THURSTON
ADDRESS: 2215 MAIN STREET NE, THURSTON, OHIO 43157
LOCATION: FAIRFIELD COUNTY, OHIO

SCALE: AS NOTED			
DESIGN BY: —	DWN BY: AGD		
CHK'D BY: —	APP'VD BY: —		
COPYRIGHT © 2017 GGC ENGINEERS, INC.			

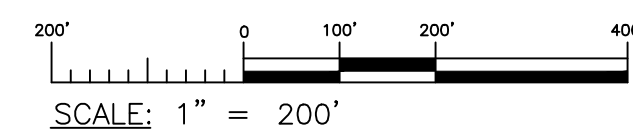
SERVICE LINE
MATERIALS

SHT#		
2 OF 3		
PROJ#	17200	2/28/2017



LEGEND:

- PUBLIC SERVICE LINE COPPER / PRIVATE SERVICE LINE COPPER
- PUBLIC SERVICE LINE COPPER / PRIVATE SERVICE LINE HDPE
- PUBLIC SERVICE LINE COPPER / PRIVATE SERVICE LINE UNKNOWN
- PUBLIC SERVICE LINE HDPE / PRIVATE SERVICE LINE COPPER
- PUBLIC SERVICE LINE HDPE / PRIVATE SERVICE LINE HDPE
- PUBLIC SERVICE LINE HDPE / PRIVATE SERVICE LINE UNKNOWN
- PUBLIC SERVICE LINE UNKNOWN / PRIVATE SERVICE LINE COPPER
- PUBLIC SERVICE LINE UNKNOWN / PRIVATE SERVICE LINE HDPE
- PUBLIC SERVICE LINE UNKNOWN / PRIVATE SERVICE LINE UNKNOWN
- EX WATERLINE (PUBLIC)
- EX WATERLINE (PRIVATE)



MAPPING PRESENTED DEPICTS INFORMATION AND DATA PROVIDED BY THE VILLAGE OF THURSTON. FEBRUARY 2017.

REVISIONS

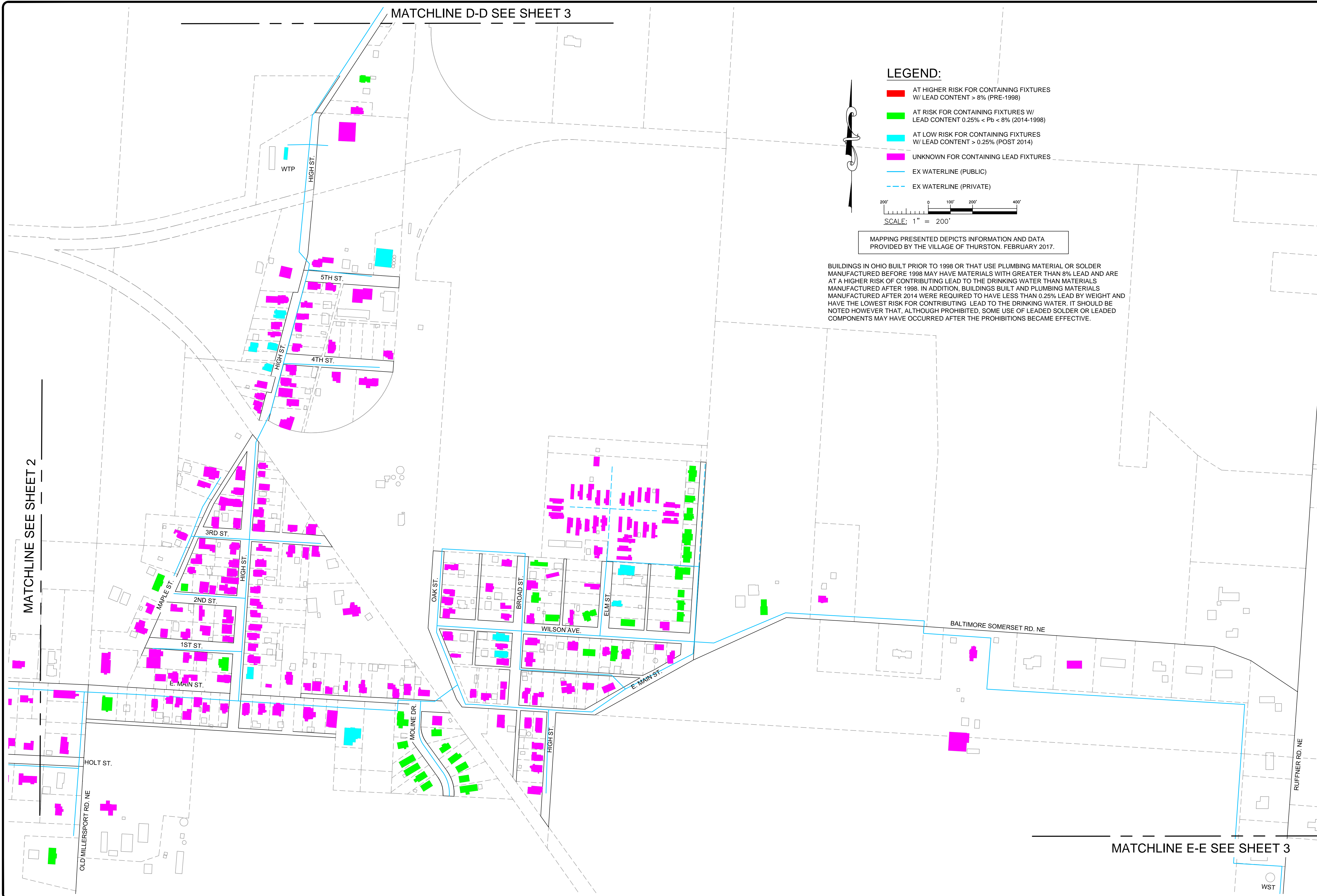
**VILLAGE OF THURSTON
LEAD SERVICE LINE & FIXTURE
MAPPING PROJECT**

CLIENT: VILLAGE OF THURSTON
ADDRESS: 2215 MAIN STREET NE, THURSTON, OHIO 43157
LOCATION: FAIRFIELD COUNTY, OHIO

SCALE: AS NOTED			
DESIGN BY:	—	DWN BY:	AGD
CHK'D BY:	—	APPV'D BY:	—
COPYRIGHT © 2017 GGC ENGINEERS, INC.			

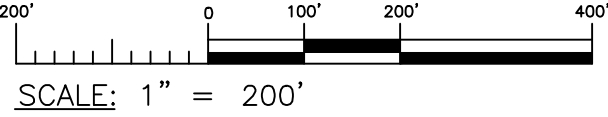
**SERVICE LINE
MATERIALS**

SHT#	3 OF 3
PROJ#	17200
	2/28/2017



LEGEND:

- AT HIGHER RISK FOR CONTAINING FIXTURES W/ LEAD CONTENT > 8% (PRE-1998)
- AT RISK FOR CONTAINING FIXTURES W/ LEAD CONTENT 0.25% < Pb < 8% (2014-1998)
- AT LOW RISK FOR CONTAINING FIXTURES W/ LEAD CONTENT > 0.25% (POST 2014)
- UNKNOWN FOR CONTAINING LEAD FIXTURES
- EX WATERLINE (PUBLIC)
- EX WATERLINE (PRIVATE)



MAPPING PRESENTED DEPICTS INFORMATION AND DATA PROVIDED BY THE VILLAGE OF THURSTON. FEBRUARY 2017.

BUILDINGS IN OHIO BUILT PRIOR TO 1998 OR THAT USE PLUMBING MATERIAL OR SOLDER MANUFACTURED BEFORE 1998 MAY HAVE MATERIALS WITH GREATER THAN 8% LEAD AND ARE AT A HIGHER RISK OF CONTRIBUTING LEAD TO THE DRINKING WATER THAN MATERIALS MANUFACTURED AFTER 1998. IN ADDITION, BUILDINGS BUILT AND PLUMBING MATERIALS MANUFACTURED AFTER 2014 WERE REQUIRED TO HAVE LESS THAN 0.25% LEAD BY WEIGHT AND HAVE THE LOWEST RISK FOR CONTRIBUTING LEAD TO THE DRINKING WATER. IT SHOULD BE NOTED HOWEVER THAT, ALTHOUGH PROHIBITED, SOME USE OF LEADED SOLDER OR LEADED COMPONENTS MAY HAVE OCCURRED AFTER THE PROHIBITIONS BECAME EFFECTIVE.



ENGINEERS

148 N HIGH STREET, GAHANNA, OHIO 43230
PHONE: 614-471-7310 FAX: 614-471-7320
WWW.GGCENGINEERS.COM

--

REVISIONS

VILLAGE OF THURSTON
LEAD SERVICE LINE & FIXTURE
MAPPING PROJECT

CLIENT: VILLAGE OF THURSTON
ADDRESS: 2215 MAIN STREET NE, THURSTON, OHIO 43157
LOCATION: FAIRFIELD COUNTY, OHIO

SCALE: AS NOTED			
DESIGN BY:	-	DWN BY:	AGD
CHK'D BY:	-	APPV'D BY:	-
COPYRIGHT © 2017 GGC ENGINEERS, INC.			

BUILDING
PIPING/FIXTURE
MATERIALS

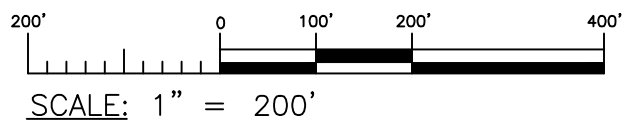
SHT#
1 OF 3

PROJ# 17200 2/28/2017



LEGEND:

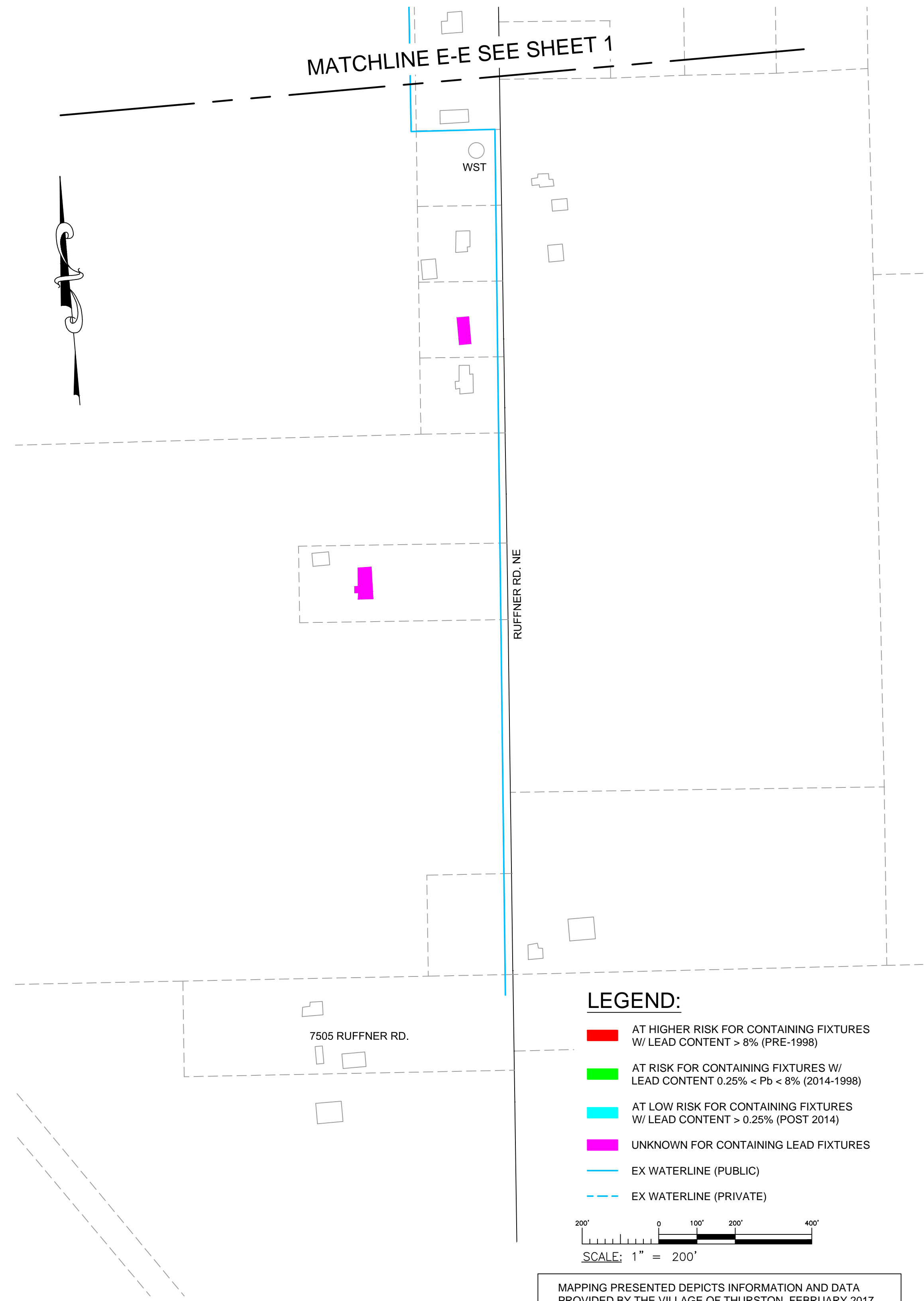
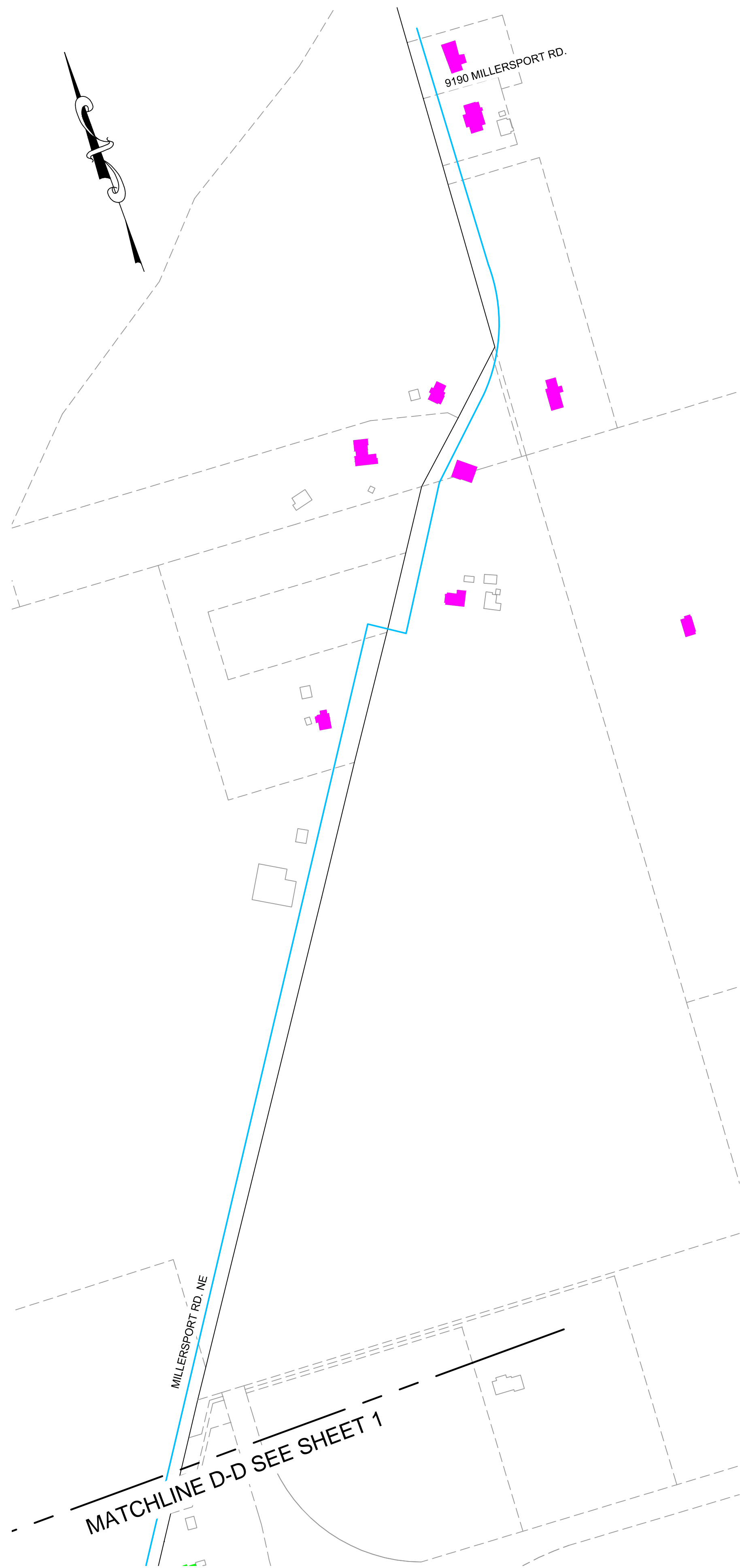
- AT HIGHER RISK FOR CONTAINING FIXTURES W/ LEAD CONTENT > 8% (PRE-1998)
- AT RISK FOR CONTAINING FIXTURES W/ LEAD CONTENT 0.25% < Pb < 8% (2014-1998)
- AT LOW RISK FOR CONTAINING FIXTURES W/ LEAD CONTENT > 0.25% (POST 2014)
- UNKNOWN FOR CONTAINING LEAD FIXTURES
- EX WATERLINE (PUBLIC)
- EX WATERLINE (PRIVATE)



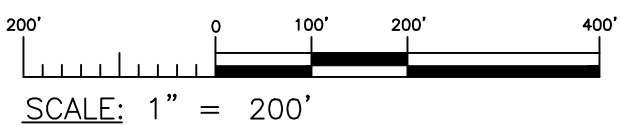
MAPPING PRESENTED DEPICTS INFORMATION AND DATA PROVIDED BY THE VILLAGE OF THURSTON, FEBRUARY 2017.

BUILDINGS IN OHIO BUILT PRIOR TO 1998 OR THAT USE PLUMBING MATERIAL OR SOLDER MANUFACTURED BEFORE 1998 MAY HAVE MATERIALS WITH GREATER THAN 8% LEAD AND ARE AT A HIGHER RISK OF CONTRIBUTING LEAD TO THE DRINKING WATER THAN MATERIALS MANUFACTURED AFTER 1998. IN ADDITION, BUILDINGS BUILT AND PLUMBING MATERIALS MANUFACTURED AFTER 2014 WERE REQUIRED TO HAVE LESS THAN 0.25% LEAD BY WEIGHT AND HAVE THE LOWEST RISK FOR CONTRIBUTING LEAD TO THE DRINKING WATER. IT SHOULD BE NOTED HOWEVER THAT, ALTHOUGH PROHIBITED, SOME USE OF LEADED SOLDER OR LEADED COMPONENTS MAY HAVE OCCURRED AFTER THE PROHIBITIONS BECAME EFFECTIVE.

SCALE: AS NOTED			
DESIGN BY:	—	DWN BY:	AGD
CHK'D BY:	—	APPV'D BY:	—
COPYRIGHT © 2017 GGC ENGINEERS, INC.			



- LEGEND:**
- AT HIGHER RISK FOR CONTAINING FIXTURES W/ LEAD CONTENT > 8% (PRE-1998)
 - AT RISK FOR CONTAINING FIXTURES W/ LEAD CONTENT 0.25% < Pb < 8% (2014-1998)
 - AT LOW RISK FOR CONTAINING FIXTURES W/ LEAD CONTENT > 0.25% (POST 2014)
 - UNKNOWN FOR CONTAINING LEAD FIXTURES
 - EX WATERLINE (PUBLIC)
 - EX WATERLINE (PRIVATE)



MAPPING PRESENTED DEPICTS INFORMATION AND DATA PROVIDED BY THE VILLAGE OF THURSTON. FEBRUARY 2017.

BUILDINGS IN OHIO BUILT PRIOR TO 1998 OR THAT USE PLUMBING MATERIAL OR SOLDER MANUFACTURED BEFORE 1998 MAY HAVE MATERIALS WITH GREATER THAN 8% LEAD AND ARE AT A HIGHER RISK OF CONTRIBUTING LEAD TO THE DRINKING WATER THAN MATERIALS MANUFACTURED AFTER 1998. IN ADDITION, BUILDINGS BUILT AND PLUMBING MATERIALS MANUFACTURED AFTER 2014 WERE REQUIRED TO HAVE LESS THAN 0.25% LEAD BY WEIGHT AND HAVE THE LOWEST RISK FOR CONTRIBUTING LEAD TO THE DRINKING WATER. IT SHOULD BE NOTED HOWEVER THAT, ALTHOUGH PROHIBITED, SOME USE OF LEADED SOLDER OR LEADED COMPONENTS MAY HAVE OCCURRED AFTER THE PROHIBITIONS BECAME EFFECTIVE.



REVISIONS

VILLAGE OF THURSTON
LEAD SERVICE LINE & FIXTURE
MAPPING PROJECT

CLIENT: VILLAGE OF THURSTON
ADDRESS: 2215 MAIN STREET NE, THURSTON, OHIO 43157
LOCATION: FAIRFIELD COUNTY, OHIO

SCALE: AS NOTED			
DESIGN BY:	—	DWN BY:	AGD
CHK'D BY:	—	APP'V'D BY:	—
COPYRIGHT © 2017 GEC ENGINEERS, INC.			

BUILDING
PIPING/FIXTURE
MATERIALS

SHT#	3 OF 3
PROJ#	17200
	2/28/2017

VERIFICATION FORM FOR COMMUNITY PUBLIC WATER SYSTEMS CLAIMING NO LEAD SERVICE LINES

The owner or operator of all community public water systems must identify and map areas of their distribution system that are known or are likely to contain lead service lines. Systems must submit a copy of the applicable map to the Ohio Department of Health and the Ohio Department of Job and Family Services. Systems must also submit a report to the director containing at least both of the following: (1) The applicable map with narrative, and (2) A list of sampling locations used to collect samples as required by Ohio Revised Code (ORC) Section 6109.121 and any rules adopted thereunder, including contact information for the owner and occupant of each sampling site.

Should a water system determine no lead service lines exist in their distribution system, they must provide information stating they reviewed, at the minimum, historical permit records and local ordinances, distribution maintenance records and information pertaining to installation dates or materials for all services lines. This information must be verified below.

I HEREBY CERTIFY THAT THE FOLLOWING METHOD(S) WERE USED TO DETERMINE NO LEAD SERVICE LINES EXIST IN THIS WATER SYSTEM'S DISTRIBUTION SYSTEM, AS REQUIRED BY ORC 6109.121(F):

LEAD SERVICE LINE VERIFICATION
<p>This PWS states they have no lead service lines and has reviewed the following information (select one or more of the following):</p> <ul style="list-style-type: none"><input type="checkbox"/> Historical permit records and/or local ordinances<input checked="" type="checkbox"/> Distribution maintenance records (i.e. meter replacement, waterline break repairs)<input type="checkbox"/> Information pertaining to installation dates for all service lines (i.e. after 1986 when lead services lines were banned)<input type="checkbox"/> Service line material of all service lines is known (i.e. all service lines are known to be PVC)

Robert Pangborn 3-2-17
Signature of Responsible Person Date

Robert Pangborn water plant oper
Printed Name and Title of Responsible Person

PWS NAME: Village of Thurston
PWS ID: OH 2302903
COUNTY: Fairfield

For Ohio EPA use only:

Date Verification Rec'd: _____