







2017 POSSIBLE LEAD WATER SERVICE LINES

-  Building Footprint
-  Parcels with Possible Lead Water Service Lines
-  Parks and/or Openspace
-  Westerville City Boundary

*Source: Franklin and Delaware County year built parcel information in conjunction with the City of Westerville install date of water mains.



0 0.5 1 Miles

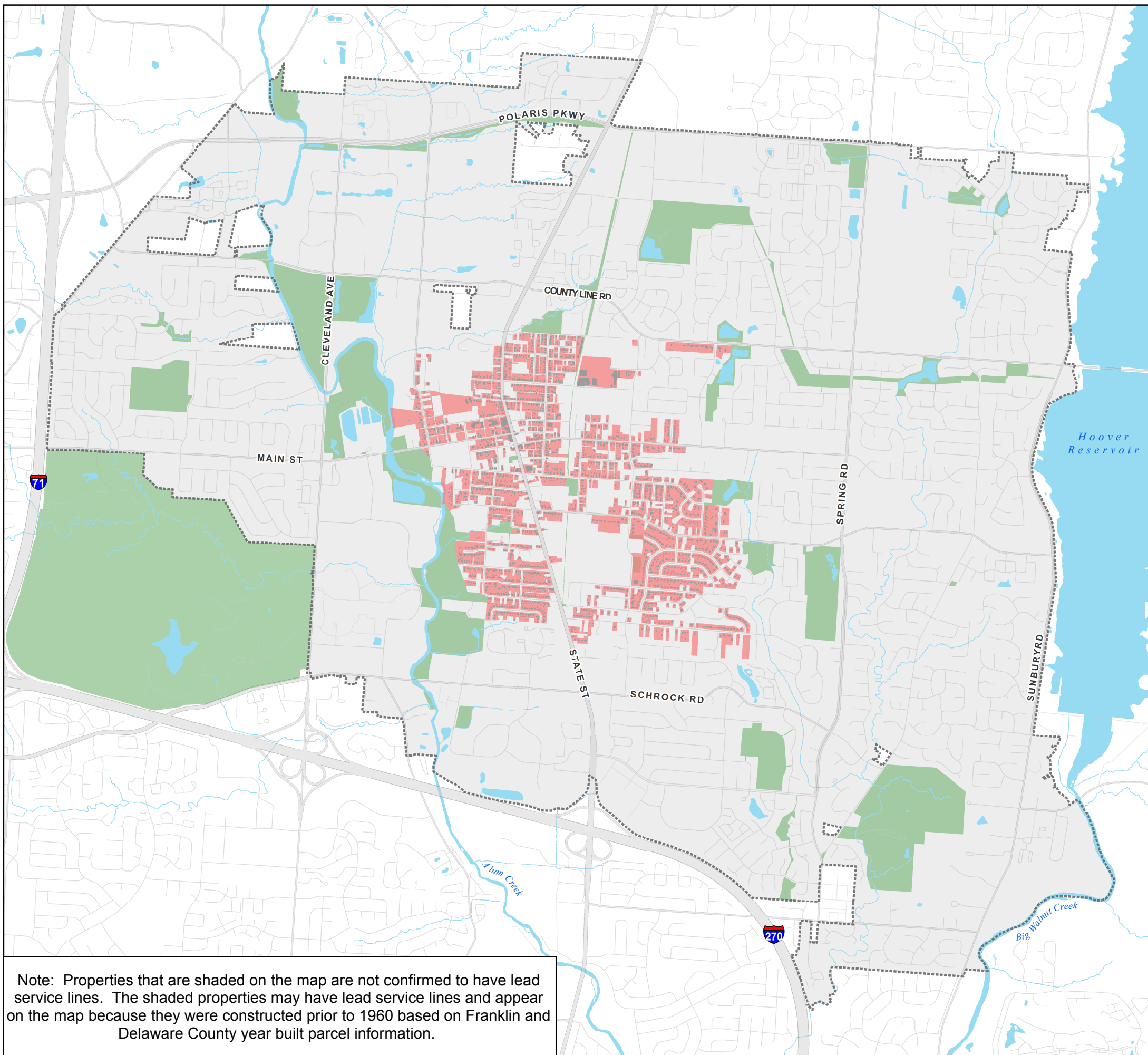
Other Potential Sources of Lead:

Lead exposure from water can not only come from lead service lines but also from in-house fixtures and solder. Buildings in Ohio built prior to 1998 or that use plumbing material or solder manufactured before 1998 may have materials with greater than 8% lead and are at a higher risk of contributing lead to the drinking water than materials manufactured after 1998. In addition, buildings built and plumbing material manufactured after 2014 were required to have less than 0.25% lead by weight and have the lowest risk for contributing lead to the drinking water. It should be noted however that, although prohibited, some use of leaded solder or leaded components may have occurred after the prohibitions became effective.

The City of Westerville, Ohio contact information:
Email: richard.lorenz@westerville.org
Phone: 614-901-6772

For additional information go to:
<https://www.westerville.org/services/water/information-about-lead-in-drinking-water>

Reasonable effort has been made to ensure the accuracy of this information. The City of Westerville assumes no liability arising from use of this information. This information is provided without warranty of any kind, expressed or implied.



Note: Properties that are shaded on the map are not confirmed to have lead service lines. The shaded properties may have lead service lines and appear on the map because they were constructed prior to 1960 based on Franklin and Delaware County year built parcel information.